



**Commonwealth of Kentucky**  
**County Election Planning Report**

<b>County Name</b>	
Lee County	
<b>Election</b>	
Primary	
<b>Person Completing this Form</b>	
Name	Kimberly A Noe
Title	County Clerk
Phone	606-464-4115

**For in-person voting on Election Day, the County Board of Elections will (check one):**

- Consolidate precincts and precinct election officers (Requires Form SBE 74);
- Utilize the same plan that was used in a previous election (Requires current election dates on Form SBE 74); or
- Open all existing precincts.

**Excused in-person absentee voting will occur (check one):**

- Within the County Clerk's office; or
- In another location within the county (Requires Form SBE 74).

**No-excuse in-person absentee voting will occur (check one):**

- Within the County Clerk's office; or
- In another location within the county (Requires Form SBE 74).

**Absentee ballot drop-boxes will be located (minimum of one location required):**

Outside of County Clerk's office

---

**I have attached:**

- All required Form SBE 74 sheets
- Relevant Maps
- Any desired supplemental narrative

Kimberly A Noe 2/14/24  
 Signature Date

Please email to [CountyElectionPlans@ky.gov](mailto:CountyElectionPlans@ky.gov)



Lee County will be using the same election plan for the 2024 Election cycle.

Lee County will have one drop box for absentee ballots for the May 2024 Primary Election. This box will be located outside for the Lee County Clerk's office on the first floor of the courthouse. The address is 256 Main Street Courthouse Room #11.

The location of 6 day excused in person voting will be located in the clerk's office on the first floor of the Lee County Courthouse. The address is 256 Main Street Courthouse Room # 11.

The location for the 3 day no excuse in person voting will be at the clerk's office on the first floor of the Lee County Courthouse. The address is 256 Main Street Courthouse Room #11.

We will have Five (5) voting centers in Lee County for the May 2024 Primary. They are as follows:

Beattyville/Lee County Fire Station- 1275 Grand Avenue

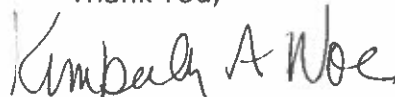
Tri- Community Fire Station: 57 Church Loop Zoe, Ky

Bear Track Fire Department: 864 Highway 399

St Helens Voting Center: 500 Highway 2016

Lee County Extension Office: 257 Industrial Park Road

Thank You,

  
Kimberly A Noe



# Commonwealth of Kentucky

## Petition to Consolidate Precincts and Precinct Election Officers

<b>County Name</b>	
Lee County	
<b>Election</b>	<b>Dates of Voting</b>
Primary	May 8 - 15 2024
<b>Person Completing this Form</b>	
<b>Name</b>	Kimberly A Noe
<b>Title</b>	County Clerk
<b>About Voting Location</b>	
<i>Example: Tulip Poplar High, 123 Main Street, County High School</i>	
<b>Name</b>	Lee Co Courthouse / Clerk's office
<b>Address</b>	256 Main Street
<b>Type</b>	Office
<b>Number of Parking Spaces</b>	<b>Sufficient Parking Spaces?</b>
50	Yes
<b>Voting Equipment to be Used</b>	
<b>Number</b>	<b>Type of equipment</b>
1	DS 200
1	Express Vote
1	E Poll Book

<b>Precincts in Voting Location</b>	
<b>Precinct name</b>	<b>Number of registered voters</b>
Excused	Early 4,955
Voting	

**Narrative Plan** (please attach additional sheets if needed)

1.) Why is this consolidation of these precincts desirable?  
 This is the same plan used in the last election

Early Absentee Voting

2.) In what manner will Precinct Officers be assigned?  
 This location will be fully staffed with election officials

I will have clerk's office staff to work the machines.

3.) How will the voting location be publicized to voters? How will the location be noted as a "Vote Center?"

Local Newspaper, Local Radio and Television station

4.) How will the voting location serve as a focal point to meet the needs of a diverse community?

Provides a location for early excused voters to vote.



# Commonwealth of Kentucky

## Petition to Consolidate Precincts and Precinct Election Officers

County Name <i>Lee</i>	
Election <i>Primary</i>	Dates of Voting <i>May 16-18 2024</i>
Person Completing this Form	
Name	<i>Kimberly A Noe</i>
Title	<i>County Clerk</i>
About Voting Location <small>Example: Tulip Poplar High, 123 Main Street, County High School</small>	
Name	<i>Lee County Courthouse</i>
Address	<i>256 Main Street</i>
Type	<i>Office</i>
Number of Parking Spaces <i>75</i>	Sufficient Parking Spaces? <i>Yes</i>
Voting Equipment to be Used	
Number	Type of equipment
<i>1</i>	<i>Ds 200</i>
<i>2</i>	<i>Express Vote</i>
<i>1</i>	<i>EPoll Book</i>

Precincts in Voting Location	
Precinct name	Number of registered voters
<i>Early Voting</i>	
<i>Absentee</i>	<i>4,955</i>

**Narrative Plan** (please attach additional sheets if needed)

1.) Why is this consolidation of these precincts desirable?  
 This is the same plan used in the last election  
*Early and Absentee voting*

2.) In what manner will Precinct Officers be assigned?  
 This location will be fully staffed with election officials  
*I will have staff members to assist voters*

3.) How will the voting location be publicized to voters? How will the location be noted as a "Vote Center?"  
*Newspaper Local Radio and television Station*

4.) How will the voting location serve as a focal point to meet the needs of a diverse community?  
*Provide location for early voting for all who qualify.*



# Commonwealth of Kentucky

## Petition to Consolidate Precincts and Precinct Election Officers

<b>County Name</b>	
Lee	
<b>Election</b>	<b>Dates of Voting</b>
Primary	May 2, 2024
<b>Person Completing this Form</b>	
<b>Name</b>	Kimberly A Noe
<b>Title</b>	County Clerk
<b>About Voting Location</b>	
<small>Example: Tulip Poplar High, 123 Main Street, County High School</small>	
<b>Name</b>	Beattyville / Lee Co Fire Station
<b>Address</b>	275 Grand Avenue
<b>Type</b>	Fire Department
<b>Number of Parking Spaces</b>	<b>Sufficient Parking Spaces?</b>
35	Yes
<b>Voting Equipment to be Used</b>	
<b>Number</b>	<b>Type of equipment</b>
2	DS 200
4	Express Vote
2	EPoll Books

<b>Precincts in Voting Location</b>	
<b>Precinct name</b>	<b>Number of registered voters</b>
Beattyville #1	369
Beattyville #2	415
Beattyville #3	563
AND	
Vote Center	4,955

**Narrative Plan** (please attach additional sheets if needed)

1.) Why is this consolidation of these precincts desirable?  
 This is the same plan used in the last election  
 share equipment, consolidate smaller precincts and election officers

2.) In what manner will Precinct Officers be assigned?  
 This location will be fully staffed with election officials  
 6 precinct officers

3.) How will the voting location be publicized to voters? How will the location be noted as a "Vote Center?"  
 Local Newspapers, local radio station, and television station

4.) How will the voting location serve as a focal point to meet the needs of a diverse community?  
 Anyone from anywhere in Lee County will be able to vote at this location if they are in Beattyville to run errands.



# Commonwealth of Kentucky

## Petition to Consolidate Precincts and Precinct Election Officers

<b>County Name</b>	
Lee County	
<b>Election</b>	<b>Dates of Voting</b>
Primary	May 21, 2024
<b>Person Completing this Form</b>	
<b>Name</b>	Kimberly A Noe
<b>Title</b>	County Clerk
<b>About Voting Location</b>	
<i>Example: Tulip Poplar High, 123 Main Street, County High School</i>	
<b>Name</b>	St Helens Voting house
<b>Address</b>	500 Highway 2016
<b>Type</b>	Voting Building
<b>Number of Parking Spaces</b>	<b>Sufficient Parking Spaces?</b>
30	Yes
<b>Voting Equipment to be Used</b>	
<b>Number</b>	<b>Type of equipment</b>
1	DS 200
2	Express Vote
2	EPoll Vote

Precincts in Voting Location	
Precinct name	Number of registered voters
St Helens	510
Ivy Patch	477
AND	
Vote Center	4,955

<b>Narrative Plan</b> <i>(please attach additional sheets if needed)</i>
1.) Why is this consolidation of these precincts desirable?
<input checked="" type="checkbox"/> This is the same plan used in the last election
Share equipment, Machines and precinct Officers
2.) In what manner will Precinct Officers be assigned?
<input type="checkbox"/> This location will be fully staffed with election officials
4. election Officers
3.) How will the voting location be publicized to voters? How will the location be noted as a "Vote Center?"
Local Newspapers, Local television and radio station
4.) How will the voting location serve as a focal point to meet the needs of a diverse community?
This location is in the middle of the county to provide each voter in each end of Lee County

SBE 74 (08/2023)



# Commonwealth of Kentucky

## Petition to Consolidate Precincts and Precinct Election Officers

<b>County Name</b>	
Lee	
<b>Election</b>	<b>Dates of Voting</b>
Primary	May 21, 2024
<b>Person Completing this Form</b>	
<b>Name</b>	Kimberly A Noe
<b>Title</b>	County Clerk
<b>About Voting Location</b>	
<i>Example: Tulip Poplar High, 123 Main Street, County High School</i>	
<b>Name</b>	Lee County Courthouse Basement
<b>Address</b>	256 Main St Beattyville
<b>Type</b>	Fire station
<b>Number of Parking Spaces</b>	<b>Sufficient Parking Spaces?</b>
<b>Voting Equipment to be Used</b>	
<b>Number</b>	<b>Type of equipment</b>
1	DS 200
1	Express Vote
1	EPoll Booth

<b>Precincts in Voting Location</b>	
<b>Precinct name</b>	<b>Number of registered voters</b>
Leeco	373
AND	
Vote Center	4,955

**Narrative Plan** (please attach additional sheets if needed)

1.) Why is this consolidation of these precincts desirable?  
 This is the same plan used in the last election

Share machines/Voting equipment

2.) In what manner will Precinct Officers be assigned?  
 This location will be fully staffed with election officials

4 election officers

3.) How will the voting location be publicized to voters? How will the location be noted as a "Vote Center?"

Newspaper, local radio and television station

4.) How will the voting location serve as a focal point to meet the needs of a diverse community?

Provide Voting location for voters in the North end of the county

SBE 74 (06/2023)



# Commonwealth of Kentucky

## Petition to Consolidate Precincts and Precinct Election Officers

<b>County Name</b>	
Lee	
<b>Election</b>	<b>Dates of Voting</b>
Primary	May 21, 2024
<b>Person Completing this Form</b>	
<b>Name</b>	Kimberly A Noe
<b>Title</b>	County Clerk
<b>About Voting Location</b>	
<i>Example: Tulip Poplar High, 123 Main Street, County High School</i>	
<b>Name</b>	Beartrack Fire Station
<b>Address</b>	864 Hwy 399
<b>Type</b>	Fire Station
<b>Number of Parking Spaces</b>	<b>Sufficient Parking Spaces?</b>
45	Yes
<b>Voting Equipment to be Used</b>	
<b>Number</b>	<b>Type of equipment</b>
2	DS 200
3	Express Vote
2	EPoll Books

<b>Precincts in Voting Location</b>	
Precinct name	Number of registered voters
Beattyville <sup>#4</sup>	419
Sandfield	373
AND	
Vote Center	4,955

<b>Narrative Plan</b> <i>(please attach additional sheets if needed)</i>
<b>1.) Why is this consolidation of these precincts desirable?</b>
<input checked="" type="checkbox"/> This is the same plan used in the last election
Consolidation to share voting equipment and precinct officers
<b>2.) In what manner will Precinct Officers be assigned?</b>
<input checked="" type="checkbox"/> This location will be fully staffed with election officials
4 precinct officers
<b>3.) How will the voting location be publicized to voters? How will the location be noted as a "Vote Center?"</b>
Local Newspaper, Local television station and radio
<b>4.) How will the voting location serve as a focal point to meet the needs of a diverse community?</b>
This location will provide voters from Lee County to vote at all locations





# Commonwealth of Kentucky

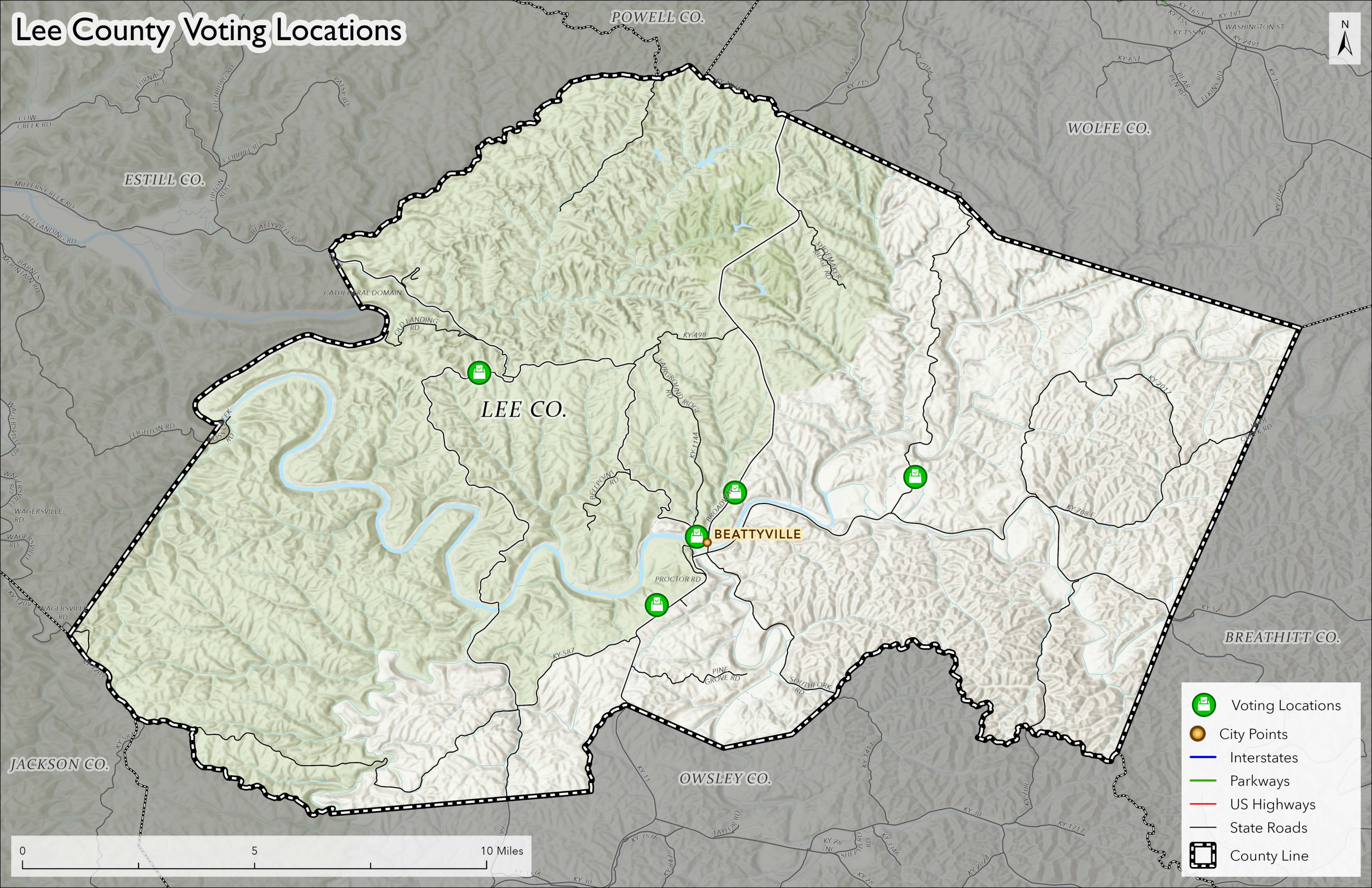
## Petition to Consolidate Precincts and Precinct Election Officers








<b>County Name</b>	
Lee County	
<b>Election</b>	<b>Dates of Voting</b>
Primary	May 21, 2024
<b>Person Completing this Form</b>	
<b>Name</b>	Kimberly A Nae
<b>Title</b>	County Clerk
<b>About Voting Location</b>	
<i>Example: Tulip Poplar High, 123 Main Street, County High School</i>	
<b>Name</b>	Lee County Extension Service
<b>Address</b>	257 Industrial Park Rd
<b>Type</b>	Community Building
<b>Number of Parking Spaces</b>	<b>Sufficient Parking Spaces?</b>
75	Yes
<b>Voting Equipment to be Used</b>	
<b>Number</b>	<b>Type of equipment</b>
2	DS 200
4	Express Votes
2	EPoll books

<b>Precincts in Voting Location</b>	
<b>Precinct name</b>	<b>Number of registered voters</b>
Heidelberg	471
Proctor	791
AND	
Vote Center	4,955

<b>Narrative Plan</b> <i>(please attach additional sheets if needed)</i>
1.) Why is this consolidation of these precincts desirable?
<input checked="" type="checkbox"/> This is the same plan used in the last election
Share machines   equipment and Precinct Officers
2.) In what manner will Precinct Officers be assigned?
<input checked="" type="checkbox"/> This location will be fully staffed with election officials
6 Precinct Officers
3.) How will the voting location be publicized to voters? How will the location be noted as a "Vote Center?"
Local newspaper, Local television and radio station
4.) How will the voting location serve as a focal point to meet the needs of a diverse community?
This location will provide all voters in Lee County a place to vote at each end of the county.

# Lee County Voting Locations



-  Voting Locations
-  City Points
-  Interstates
-  Parkways
-  US Highways
-  State Roads
-  County Line

0 5 10 Miles