



Commonwealth of Kentucky
County Election Planning Report

County Name	
KENTON	
Election	
2023 GENERAL	
Person Completing this Form	
Name	Gabrielle Summe
Title	Kenton County Clerk
Phone	859-392-1660

For in-person voting on Election Day, the County Board of Elections will (check one):

- Consolidate precincts and precinct election officers (Requires Form SBE 74);
- Utilize the same consolidation plan that was used in a previous election (Requires previous Form SBE 74); or
- Open all existing precincts.

Excused in-person absentee voting will occur (check one):

- Within the County Clerk's office; or
- In another location within the county (Requires Form SBE 74).

No-excuse in-person absentee voting will occur (check one):

- Within the County Clerk's office; or
- In another location within the county (Requires Form SBE 74).

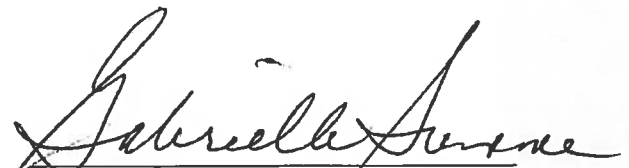
Absentee ballot drop-boxes will be located (minimum of one location required):

Kenton County Gov't Center (inside and outside)- see excel

Historic Independence Courthouse (inside and outside) see excel

I have attached:

- All required Form SBE 74 sheets
- Relevant Maps
- Supplemental Narrative


 Signature _____ Date _____

Kenton County Election Commission

PO Box 1109 Covington, KY 41012

859-392-1620

www.kentoncountyclerk.com

*Gabrielle Summe
Chairman*

*Chuck Korzenborn
Sheriff*

*Bryce Rhoades
Democratic Party Rep*

*Scott Kimmich
Republican Party Rep*

August 1, 2023

State Board of Elections
140 Walnut Street
Frankfort, KY 40601

Dear All,

I am writing on behalf of the Kenton County Board of Elections about a timing conflict and approval process conflict I am not sure how to resolve.

1. August 9: County Boards are required to provide the State Board of Elections with an Election Day plan by August 9, 2023.
2. September 20: KRS 117.065(1) gives the County Board of Elections up to September 20th to establish polling locations.
3. September 20: The County Board has a consent agreement with the DOJ that means they must approve polling locations and they have up to September 20th to do it.

The County Board will submit all necessary documents for review to the SBE by August 9, 2023. However, the Board is requesting either a conditional approval pending the approval of the locations by DOJ or a deferral of the SBE's review pending the decisions of the Department of Justice (DOJ).

1. County Election Planning Report
2. SBE 74 OF LOCATION-a series of e-mails will be sent with .pdf
3. Map of locations. Best seen on https://linkgis.org/mapviewer_voting/
4. Excel of drop box locations
5. Excel of pending polling locations
6. Ballot Matrix for state codes and precinct names

Drop Boxes- four (4) drop boxes located in two locations.

Inside & outside at Kenton Co Gov't Center, 1840 Simon Kenton Way, Cov.

Inside & outside at Historic Independence Courthouse, 5272 Madison Pike, Ind.

Precincts- There are 70 precincts with the State Races but there are three (3) unexpired school board races and one (1) unexpired city council race which means there will be 72 ballot faces.

Early Voting Locations- Five (5) early voting locations that will function as voting centers which allows a voter to go to any location to receive their precinct specific ballot. This is accomplished with using a Ballot on Demand printing system as well as the ES&S Express Vote. The Express Vote is essentially a ballot on demand system that has all the precinct specific ballots available.

Election Day Locations- In 2020 Kenton County had twenty-four locations and then added ten more location for the 2023 Primary for a total of thirty-four (34) locations.

Based on requests for additional polling locations, the Board has approved four (4) additional locations. This would increase the number of locations to thirty-eight (38).

Fiscal Court will be purchasing additional scanners, Express Vote printers, e-poll books, e-poll book printers and tables to accommodate these additional locations. This also means an increase in the necessary supplies, signs, training dates, training costs etc...

Hopefully the executive committees of the Democratic and Republican parties will be able to provide additional poll workers to man these additional locations.

Board's basic rule for manning each location is as follows:

- Two (2) judges per location
- Two (2) sheriffs per location
- One (1) clerk per thousand assigned voters with a two (2) clerk minimum.

Due to the DOJ agreement, the Board is required to have Election Day Surveyors (EDS) to review all the locations for 6-days of voting, three (3) days of early voting and the 38 locations on Election Day. We had four (4) EDS for 2023 Primary but with the increase in locations, we will likely have to add two (2) EDS. These people are paid for the day as well as their mileage.

Board's basic rule for equipment for each location is as follows.

- One E-poll book and printer per clerk assigned to the location.
- One (1) DS200 scanner per 4,000 assigned voters since that is their ballot capacity.
- One (1) Express per thousand assigned voters.
- Not sure how many parking spots are considered sufficient.

Past, current, and future polling locations must be reviewed by the Department of Justice (DOJ). Once there is approval by the DOJ, these locations can be:

1. Added to the location roster for Kenton County
2. Surveys can be added to SOS website.
3. Surveys can be added to the VRS.
4. Voter can be updated in VRS on their assigned polling location.
5. Voters can be notified as to their new assigned polling location.

Election day locations are listed as consolidated locations per definition of the SBE but they are in fact VOTING CENTERS. Kenton County assigns precincts to specific locations in case a voter wants a pre-printed ballot, but the voter can choose to go to any location on Election Day as long as they are willing to use the Express Vote. The Express Vote is programed with all possible ballot styes and the DS200 is programmed to accept all possible ballot styles. The five early voting centers with the Ballot on Demand also are available on Election Day and this helps give voters more choices.

This Election Plan gives all voters, especially those with accessibility issues, more flexibility to choose the location most convenient for them. It also ensures that if a voter goes to the wrong location, or has moved, we do not have to redirect them to a different physical location.

In addition to the submitted plan, the County Board will be submitting some precinct modifications as requested by the City of Covington and approved by the County Board. There is also a precinct modification due to the reapportionment passed by the Fiscal Court on July 25, 2023. I hope that a swift review and approval of these changes can be achieved.

Sincerely,

Gabrielle Summe
Kenton County Clerk
Chairman, Kenton Board of Elections

need updating

	County	Time	Type	Precincts	Precinct Location Name	Street Number	Street	City	KY	Zipcode	Times for Early Voting
		Early or Election Day	Voting Center, Consolidated Location, or Precinct								
1	Kenton	Early	Voting Center	all	Calvary Baptist Church	3711	Tibbatts Street	Covington	KY	41015	
2	Kenton	Early	Voting Center	all	Independence Sr Center	2001	Jackwoods Pkwy	Independence	KY	41051	
3	Kenton	Early	Voting Center	all	Lakeside Christian Church	195	Buttermilk Pike	Lakeside Park	KY	41017	
4	Kenton	Early	Voting Center	all	Library-Covington						
5	Kenton	Early	Voting Center	all	Kenton County Gov't Center	1840	Simon Kenton Way	Covington	KY	41017	
	Kenton	Election Day	Consolidated	B117, B141,	Beechgrove School	1029	Bristow Rd	Independence	KY	41051	6:00AM - 6:00PM
	Kenton	Election Day	Consolidated	A113, A114	Calvary Baptist Church	3711	Tibbatts Street	Covington	KY	41015	6:00AM - 6:00PM
	Kenton	Election Day	Consolidated	C101	Crescent Spring City BLDG	739	Buttermilk Pike	Crescent Springs	KY	41017	6:00AM - 6:00PM
	Kenton	Election Day	Consolidated	C130, C131	Crestview Hills City BLDG	50	Town Center BLVD	Ft Mitchell	KY	41017	6:00AM - 6:00PM
	Kenton	Election Day	Consolidated	A104	Devou Golf Course Clubhouse	1201	Park Dr	Covington	ky	41011	6:00AM - 6:00PM
	Kenton	Election Day	Consolidated	B107, B109	Edgewood Senior Center	550	Freedom Park Dr	Edgewood	KY	41017	6:00AM - 6:00PM
	Kenton	Election Day	Consolidated	C103	Elsmere City Building	3921	Dixie Highway	Elsmere	KY	41018	6:00AM - 6:00PM
	Kenton	Election Day	Consolidated	C104, C139	Elsmere Senior Center	179	Dell Ave	Elsmere	KY	41018	6:00AM - 6:00PM
	Kenton	Election Day	Consolidated	C101	Emerald Springs Clubhouse	2201	Edenderry Dr	Crescent Springs	KY	41017	6:00AM - 6:00PM
	Kenton	Election Day	Consolidated	C116, C117	Ft Mitchell City Building	2355	Dixie Highway	Ft Mitchell	KY	41017	6:00AM - 6:00PM
	Kenton	Election Day	Consolidated	C122	Ft Wright Civic Club	115	Kennedy Rd	Covington	KY	41011	6:00AM - 6:00PM
	Kenton	Election Day	Consolidated	A132	Gardens of Park Hills	1622	Dixie HWY	Park Hills	KY	41011	6:00AM - 6:00PM
	Kenton	Election Day	Consolidated	A109, A110, A111	Glenn O. Swing Elementary	501	W 19th St	Covington	KY	41014	6:00AM - 6:00PM
	Kenton	Election Day	Consolidated	B133, B137	Independence Sr Center	2001	Jackwoods Pkwy	Independence	KY	41051	6:00AM - 6:00PM
	Kenton	Election Day	Consolidated	A103	JG Carlisle	810	Holman St	Covington	KY	41011	6:00AM - 6:00PM
	Kenton	Election Day	Consolidated	B131, B138	Kenton County Golf Clubhouse	3908	Richardson Rd	Independence	KY	41051	6:00AM - 6:00PM
	Kenton	Election Day	Consolidated	B118	Kenton County Garage	420	Independence Station F	Independence	KY	41051	6:00AM - 6:00PM
	Kenton	Election Day	Consolidated	A106	Kenton County Government Center	1840	Simon Kenton Way	Covington	KY	41017	6:00AM - 6:00PM
	Kenton	Election Day	Consolidated	C140, C127,	Lakeside Christian Church	195	Buttermilk Pike	Lakeside Park	KY	41017	6:00AM - 6:00PM
	Kenton	Election Day	Consolidated	A117, A124	Latonia Elementary	3933	Huntington Ave	Covington	KY	41015	6:00AM - 6:00PM
	Kenton	Election Day	Consolidated	A101	Library-Covington	502	Scott St	Covington	KY	41011	6:00AM - 6:00PM
	Kenton	Election Day	Consolidated	C113	Library-Erlanger	401	Kenton Lands Rd	Erlanger	KY	41018	6:00AM - 6:00PM
	Kenton	Election Day	Consolidated	B120, B121	Library-Independence	1992	Walton Nicholson Rd	Independence	KY	41051	6:00AM - 6:00PM
	Kenton	Election Day	Consolidated	C125	Lookout Heights Civic Club	1661	Park Rd	Ft Wright	KY	41011	6:00AM - 6:00PM
	Kenton	Election Day	Consolidated	A125,A126	Ludlow Senior Center	808	Elm St	Ludlow	KY	41016	6:00AM - 6:00PM
	Kenton	Election Day	Consolidated	A119, A121, A123	Madison Avenue Christian Church	1530	Madison Ave	Covington	KY	41011	6:00AM - 6:00PM
	Kenton	Election Day	Consolidated	A108	Moore Activity Center	304	Linden Ave	Covington	KY	41011	6:00AM - 6:00PM
	Kenton	Election Day	Consolidated	B101,B143, B123	Piner Baptist Church	15044	Madison Pike	Morning View	KY	41063	6:00AM - 6:00PM
	Kenton	Election Day	Consolidated	C133, C134, C135	River Ridge Elementary	2772	Amsterdam Rd	Villa Hills	KY	41017	6:00AM - 6:00PM
	Kenton	Election Day	Consolidated	B105, B142	Ryland Heights Elementary	3845	Stewart Rd	Ryland Heights	KY	41015	6:00AM - 6:00PM
	Kenton	Election Day	Consolidated	C107, C110	Scheben Gym	450	Barlett Ave	Erlanger	KY	41018	6:00AM - 6:00PM
	Kenton	Election Day	Consolidated	B119	School House Bee Company	4041	Visalia Rd	Morning View	KY	41063	6:00AM - 6:00PM
	Kenton	Election Day	Consolidated	A136, A137,A138	Scott High School	5400	Old Taylor Mill Rd	Taylor Mill	KY	41015	6:00AM - 6:00PM
	Kenton	Election Day	Consolidated	C141, B125	St. Barbara's Church	4042	Turkeyfoot Road	Erlanger	KY	41018	6:00AM - 6:00PM
	Kenton	Election Day	Consolidated	B115, B116	Summit View Academy	5002	Madison Pike	Independence	KY	41051	6:00AM - 6:00PM
	Kenton	Election Day	Consolidated	A131, B122	Taylor Mill Elementary	5907	Taylor Mill Rd	Covington	KY	41015	6:00AM - 6:00PM
	Kenton	Election Day	Consolidated	B106, B139, B110	Turkeyfoot Middle School	3300	Turkeyfoot Road	Edgewood	KY	41017	6:00AM - 6:00PM
	Kenton	Election Day	Consolidated	B130, B132, B140, B144	Twenhofel Middle School	11846	Taylor Mill Rd	Independence	KY	41051	6:00AM - 6:00PM

	County	Drop Box Location Name (Bldg or Place)	Address	City	KY	Zipcode	Outside or Inside
1	KENTON	County Government Center	1840 Simon Kenton Way	Covington	KY	41011	OUTSIDE
2	KENTON	County Government Center	1840 Simon Kenton Way	Covington	KY	41011	INSIDE
3	KENTON	Historic Kenton County Courthouse	5272 Madison Pike	Independence	KY	41051	OUTSIDE
4	KENTON	Historic Kenton County Courthouse	5272 Madison Pike	Independence	KY	41051	INSIDE
5							
6							
7							
8							
9							
10							
11							
12							
13							
14							
15							
16							
17							
18							
19							
20							

Precinct Code	GIS & VRS name	Precinct Name	Sen	Rep	Com./Con/Mag	Congressional	Supreme Court	Judicial	CITY
B101	Bracht 1 (B101)	Bracht 1	20	61	2	4	6	16	WAL & CO
B143	Bracht 2 (B143)	Bracht 2	17	61	2	4	6	16	CO
A125	BRM (A125)	Bromley	23	63	1	4	6	16	BRM & CO
A101	COV 1 (A101)	Covington 1	24	65	1	4	6	16	COV
A103	COV 2 (A103)	Covington 2	23	65	1	4	6	16	COV
A104	COV 3 (A104)	Covington 3	23	65	1	4	6	16	COV
A119	COV 4 (A119)	Covington 4	23	65	1	4	6	16	COV
A121	COV 5 (A121)	Covington 5	23	64	1	4	6	16	COV
A108	COV 6 (A108)	Covington 6	23	65	1	4	6	16	COV
A123	COV 7 (A123)	Covington 7	23	64	1	4	6	16	COV
A110	COV 8 (A110)	Covington 8	23	64	1	4	6	16	COV
A109	COV 9 (A109)	Covington 9	23	65	1	4	6	16	COV
A111	COV 10 (A111)	Covington 10	23	65	1	4	6	16	COV & KV
A105	COV 11 (A105)	Covington 11	23	63	1	4	6	16	COV
A124	COV 12 (A124)	Covington 12	23	64	1	4	6	16	COV
A113	COV 13 (A113)	Covington 13	23	65	1	4	6	16	COV
A117	COV 14 (A117)	Covington 14	23	64	1	4	6	16	COV
A114	COV 15 (A114)	Covington 15	23	65	1	4	6	16	COV & CO
A131	COV 16 (A131)	Covington 16	23	65	1	4	6	16	COV
B122	COV 17 (B122)	Covington 17	23	64	2	4	6	16	COV & CO
C101	CSP 1 (C101)	Crescent Springs 1	23	63	3	4	6	16	CSP & CO
C102	CSP 2 (C102)	Crescent Springs 2	23	63	3	4	6	16	CSP & CO
C130	CRH 1 (C130)	Crestview Hills 1	23	69	3	4	6	16	CRH
C131	CRH 2 (C131)	Crestview Hills 2	23	65	3	4	6	16	CRH
B105	DEC (B105)	Decoursey	23	64	2	4	6	16	FVW & RH & CO
B142	DEC 1.5 (B142)	Decoursey 1.5	17	64	2	4	6	16	RH
B106	EDG 1 (B106)	Edgewood 1	23	65	2	4	6	16	EDG
B139	EDG 1.5 (B139)	Edgewood 1.5	23	69	2	4	6	16	EDG
B107	EDG 2 (B107)	Edgewood 2	23	65	2	4	6	16	EDG
B110	EDG 3 (B110)	Edgewood 3	23	65	2	4	6	16	EDG
B109	EDG 4 (B109)	Edgewood 4	23	64	2	4	6	16	EDG
C103	ELS 1 (C103)	Elsmere 1	23	69	3	4	6	16	ELS
C104	ELS 2 (C104)	Elsmere 2	23	69	3	4	6	16	ELS
C139	ELS 3 (C139)	Elsmere 3	23	69	3	4	6	16	ELS
C107	ERL 1 (C107)	Erlanger 1	23	69	3	4	6	16	ERL
C141	ERL 2 (C141)	Erlanger 2	23	69	3	4	6	16	ERL
C113	ERL 3 (C113)	Erlanger 3	23	63	3	4	6	16	ERL
C110	ERL 4 (C110)	Erlanger 4	23	69	3	4	6	16	ERL
B125	ERL 5 (B125)	Erlanger 5	23	69	2	4	6	16	ERL
B138	ERL 6 (B138)	Erlanger 6	23	64	2	4	6	16	ERL
C140	FTM 1 (C140)	Ft. Mitchell 1	23	63	3	4	6	16	FTM

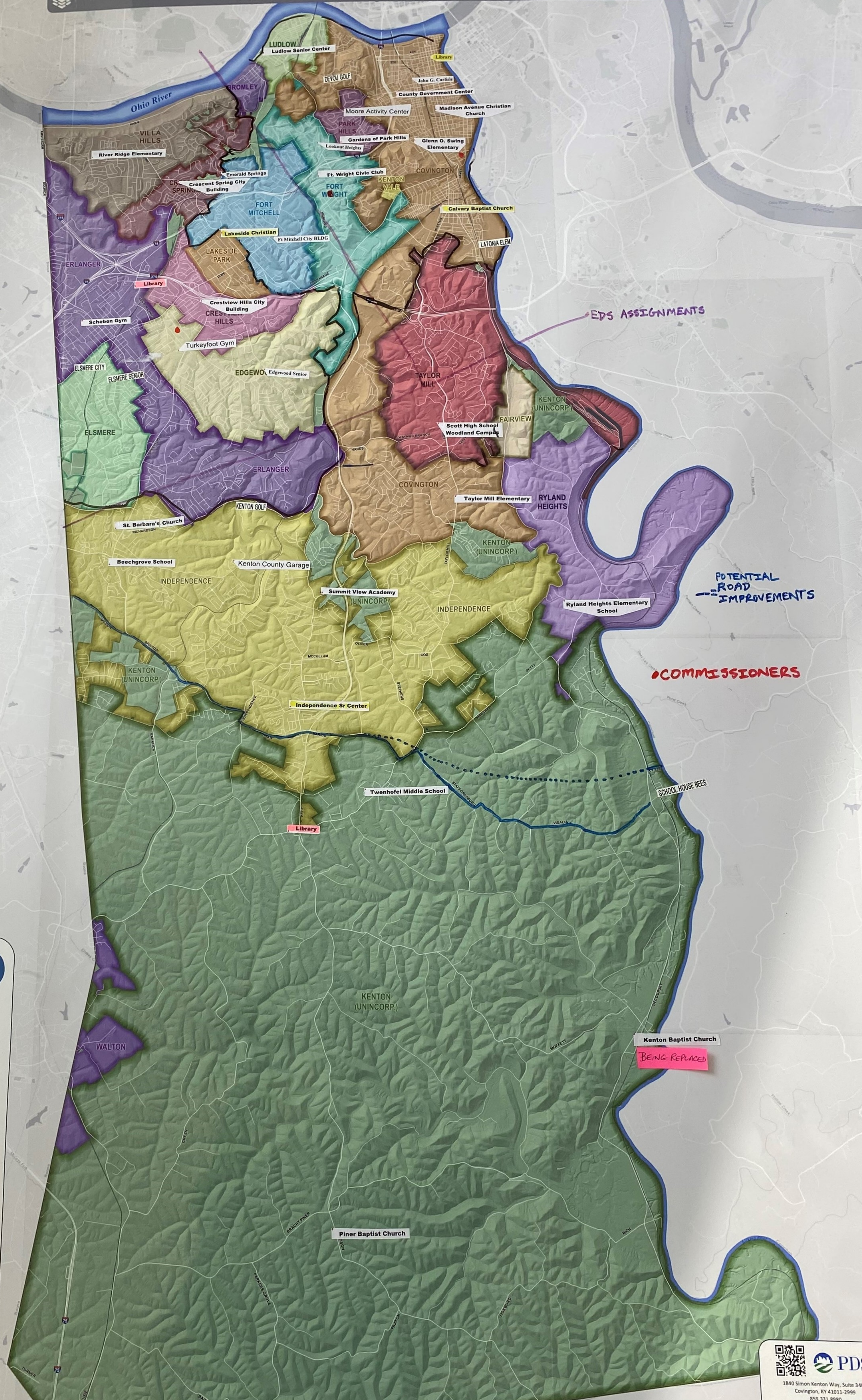
C116	FTM 2 (C116)	Ft. Mitchell 2	23	63	3	4	6	16	FTM
C117	FTM 3 (C117)	Ft. Mitchell 3	23	63	3	4	6	16	FTM
C122	FTW 1 (C122)	Ft. Wright 1	23	65	3	4	6	16	FTW
C125	FTW 2 (C125)	Ft. Wright 2	23	65	3	4	6	16	FTW & CO
B115	IND 1 (B115)	Independence 1	17	64	2	4	6	16	IND
B116	IND 2 (B116)	Independence 2	17	64	2	4	6	16	IND & CO
B117	IND 3 (B117)	Independence 3	20	69	2	4	6	16	IND
B118	IND 4 (B118)	Independence 4	17	64	2	4	6	16	IND
B131	IND 5 (B131)	Independence 5	17	69	2	4	6	16	IND
B132	IND 6 (B132)	Independence 6	17	64	2	4	6	16	IND & CO
B144	IND 6.5 (B144)	Independence 6.5	23	64	2	4	6	16	IND
B133	IND 7 (B133)	Independence 7	17	64	2	4	6	16	IND
B140	IND 8 (B140)	Independence 8	17	64	2	4	6	16	IND
B137	IND 9 (B137)	Independence 9	17	78	2	4	6	16	IND
C127	LSP (C127)	Lakeside Park	23	63	3	4	6	16	LSP
A126	LUD (A126)	Ludlow	23	63	1	4	6	16	LUD
B119	MVW (B119)	Morningview	17	78	2	4	6	16	CO
B120	NICH 1 (B120)	Nicholson 1	20	78	2	4	6	16	WAL & CO
B121	NICH 2 (B121)	Nicholson 2	17	78	2	4	6	16	CO
B141	NICH 3 (B141)	Nicholson 3	20	78	2	4	6	16	IND & CO
A132	PH (A132)	Park Hills	23	65	1	4	6	16	PH
B123	Piner (B123)	Piner	17	78	2	4	6	16	CO
A136	TM 1 (A136)	Taylor Mill 1	23	64	1	4	6	16	TM
A137	TM 2 (A137)	Taylor Mill 2	23	64	1	4	6	16	TM
A130	TM 3 (A130)	Taylor Mill 3	23	64	1	4	6	16	TM & CO
C133	VH 1 (C133)	Villa Hills 1	23	63	3	4	6	16	VH
C134	VH 2 (C134)	Villa Hills 2	23	63	3	4	6	16	VH
C135	VH 3 (C135)	Villa Hills 3	23	63	3	4	6	16	VH & CO
B130	WT (B130)	Whites Tower	17	78	2	4	6	16	IND & RH & CO

School

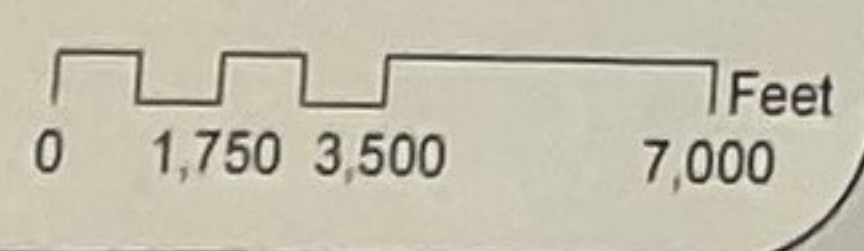
KC1 & WAL
KC1
KC5
COV
COV
COV & KC4
COV
COV
COV
COV
COV
COV
KC4
COV
COV
COV
COV & KC3
KC3
KC3
KC3
KC5
KC5
KC5
KC4
KC1
KC1
ERL & KC3
ERL
KC3
KC3
KC3
ERL
ERL
KC2
ERL
KC2
ERL & KC5
ERL
KC2
KC2
BWD & KC4

BWD & KC4
BWD & KC4
BWD & KC4
KC4
KC2
KC2
KC2
KC2
KC2
KC1
KC1
KC1
KC1
KC1
BWD & KC4
LUD
KC1
WAL & KC1
KC1
KC2
KC4
KC1
KC3
KC3
KC3
KC5
KC5
KC5
KC1

KENTON COUNTY CITIES



- BROMLEY
- COVINGTON
- CRESCENT SPRINGS
- CRESTVIEW HILLS
- CRITTENDEN
- EDGEWOOD
- ELSMERE
- ERLANGER
- FAIRVIEW
- FORT MITCHELL
- FORT WRIGHT
- INDEPENDENCE
- KENTON VALE
- LAKESIDE PARK
- LUDLOW
- PARK HILLS
- RYLAND HEIGHTS
- TAYLOR MILL
- UNINCORPORATED KENTON COUNTY
- VILLA HILLS
- WATSON



EDS ASSIGNMENTS

POTENTIAL ROAD IMPROVEMENTS

COMMISSIONERS

Kenton Baptist Church
BEING REPLACED

PDS

1840 Simon Kenton Way, Suite 3400
Covington, KY 41011-2999
859.331.8980
Office hours M-F 8-5
www.linkgis.org

Parcel data provided by CCPVA,
PCPVA and LINK-GIS.

Date: 10/4/2021