



Commonwealth of Kentucky

County Election Planning Report

County Name	
OLDHAM	
Election	
GENERAL 2023 (NOV 7 2023)	
Person Completing this Form	
Name	AMY ALVEY
Title	COUNTY CLERK
Phone	502-222-9311

For in-person voting on Election Day, the County Board of Elections will (check one):

- Consolidate precincts and precinct election officers (Requires Form SBE 74);
- Utilize the same consolidation plan that was used in a previous election (Requires previous Form SBE 74); or
- Open all existing precincts.

Excused in-person absentee voting will occur (check one):

- Within the County Clerk's office; or
- In another location within the county (Requires Form SBE 74).

No-excuse in-person absentee voting will occur (check one):

- Within the County Clerk's office; or
- In another location within the county (Requires Form SBE 74).

Absentee ballot drop-boxes will be located (minimum of one location required):

100 W Jefferson St, LaGrange, KY 40031 (OC Clerk Main Office)

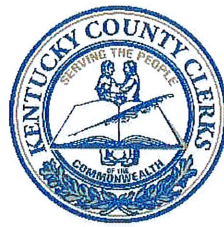
100 W Jefferson St, LaGrange, KY 40031 (OC Clerk Main Office)

I have attached:

- All required Form SBE 74 sheets
- Relevant Maps
- Supplemental Narrative

Amy Alvey
Signature

08/07/2023
Date



*Office of the Oldham County Clerk
Amy B. Alvey*

August 8, 2023

Ms. Karen Sellers
Executive Director of Kentucky State Board of Election
140 Walnut Street
Frankfort, Kentucky 40601

RE: Oldham County Election Plan-General 2023

Ms. Sellers,

Included with the letter is the election plan for Oldham County for the 2023 General Election. I have also included the minutes from our recent Oldham County Board of Elections where they voted on the plan. This election we will use the updated and new purchased equipment for print-on-demand ballots. This process worked great for the 2023 Primary Election.

Drop-Box Location

Drop-box locations will be at our main office located at 100 West Jefferson Street, LaGrange.

In-person Excused Voting (6 days)

- All in-person excused voting will be done at the Oldham County Clerk's main office location located at 100 West Jefferson Street, LaGrange.

No Excuse Early Voting (3days)

- No excuse early voting will again take place at the John W. Black Community Center located in Buckner. This location is geographically located in the center of Oldham County, has adequate parking and enough space in the community room to serve 175-200 voters with privacy booths. Early voting last election went very smooth at this location and we received many compliments of the quick process.

Election Workers

We anticipate staffing each voting center with a range of 10-17 election workers depending on the number of e-poll books at each location. Early voting will have approximately 13-15 election workers. I will have one of my staff members at each location to assist workers with questions or

Continued:

issues as they arise so there will be one point of contact from each location to ensure that all forms are completed at the startup of each day and at closing of the polls. This was a huge asset during the Primary Election to our election staff that remains at our central office on election day.

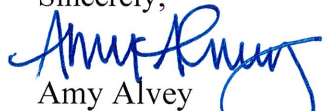
Election Day (November 7, 2023)

The same eight (8) vote centers used in the previous election will be utilized which were: Oldham County High School, North Oldham High School, South Oldham Middle School, East Oldham Middle School, Westport Baptist Church Life Center, LaGrange Baptist Church, Crestwood Baptist Church, and Pewee Valley Fire. We are moving the Sojourn Church location to Goshen Elementary to capture the voting population on the northwestern side of the County to help with the voter load at North Oldham High School. Sojourn Church was a great location but had little turnout and with moving the voting center further west we anticipate it will better be utilized by the adjoining neighborhood of 600+ homes as well as those traveling in and out of Jefferson County for work. We feel the proposed locations will give voters additional voting location opportunities in the more heavily populated areas in Oldham County. I have included a map with the election plan showing each location.

Voter Notification

Voter notification is key to elections. Oldham County's plan is to mail out postcards to every household in Oldham County that will outline their voting options and locations. We will also do notices in our local paper, on social media as well as utilize the County's electronic message boards located throughout the County to inform the voters.

Sincerely,



Amy Alvey
Oldham County Clerk

amy.alvey@ky.gov

Cc: Oldham County Board of Elections

August 1, 2023

Noting all members present (Sheriff Wakefield, Board Members Crady and Reed) the meeting was called to order by Clerk Alvey at 9:00 AM.

Clerk Alvey gave an update regarding the reapportionment process. Fiscal Court Committee will meet on August 3rd at 10AM to review the map and make any changes they see fit.

Clerk Alvey updated the board on the election plan for the 2023 General election. St. Aloysius has the November election blocked out on their school calendar but does not have the May 2024 primary blocked off. An email was sent to the office manager and she stated that May elections will be discussed at their staff meeting on Wednesday, August 3rd to determine if they can accommodate us. If the church can only do General elections and no primary elections Clerk Alvey requested that the voting center be kept at Pewee Valley Fire.

It had also been requested to the OC Superintendent the use of Goshen Elementary as a voting center which would replace Sojourn Church. Moving the voting center to Goshen Elementary would hopefully lessen the voter load at NOHS due to its proximity to the OC/JC line by picking up commuters going into Jefferson County as well as pick up the voters in Hillcrest Subdivision which is approximately 600+ homes. Brent Deaves with OC Board of Education had concerns because the elementary school has a year-round enrichment program so students would be on site and requested a walk through to see if we can make it work. Sheriff Wakefield and Clerk Alvey will meet Mr. Deaves at Goshen Elementary on Thursday to get a plan together to make the facility a voting center.

Motion made by Member Crady and seconded by Member Wakefield to approve the voting plan as discussed keeping the same 7 locations as before (Oldham County High, North Oldham High, South Oldham Middle, East Oldham Middle, Crestwood Baptist Church, LaGrange Baptist Church, Westport Baptist Life Center) and moving Sojourn to Goshen Elementary if feasible and will remain at Pewee Valley Fire if St. Aloysius cannot accommodate May primary elections. Motion carried with all members voting yes.

Harp Enterprises will be at the Crestwood Clerk's office on October 5th & 6th to perform software upgrades and maintenance on the voting machines. Election school for poll workers has also been set for Thursday, October 5th at 10AM and 6PM. There will also be election clerk training for the poll worker on October 18th and 19th with 3 session a day. Staff will train the poll workers on setup, reprinting ballots, spoiling ballots, completion of forms and closing the voting centers.

Sheriff Wakefield advised he would be out of town some during the month of October, as well as Member Reed and Crady, and asked when we would lockdown the machines for the November 7th election. After looking at everyone's schedule it was decided that on October 23rd the Board would go to the Crestwood Clerk's office to lockdown the voting machines. Time to determined at a later date.

Clerk Alvey was happy to announce that there are approximately 10-15 new requests to be poll workers. Many of the seasoned workers, around 20, could not attend training last election, therefore could not work the May primary. With those seasoned workers coming back plus the new we should have adequate coverage for the November election. With that being said, Clerk Alvey expressed concern that a few poll workers appeared to not be in support of the current election process by talking about election fraud, voter roll conspiracies and/or overall negative commentary about the elections and asked the Board if they wanted to have them work again as poll workers. Discussion followed. The board agreed that those individuals would not be asked to work again as a poll worker.

Sheriff Wakefield suggested at a QR code be added to the postcards sent to OC households so voters could scan it and be directed to the clerk website for detailed information. Clerk Alvey agreed that was an excellent idea and would be sure to add it on the postcards for the November election.

Motion made by Member Crady and seconded by Sheriff Wakefield to adjourn the meeting at 9:55 AM. Motion carried with all members voting yes.

Signed:  _____



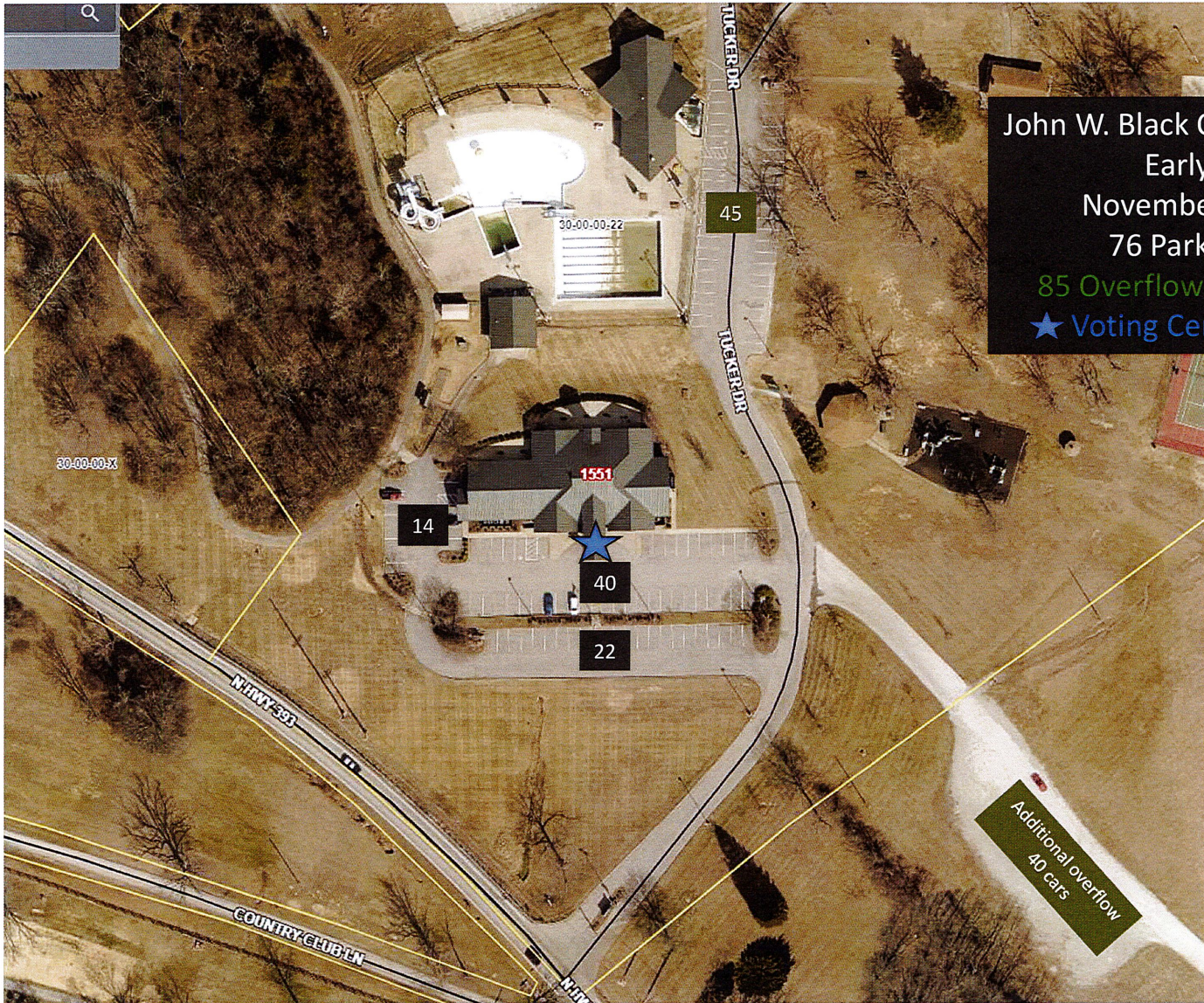
Commonwealth of Kentucky

Petition to Consolidate Precincts and Precinct Election Officers

County Name	
OLDHAM	
Election	Dates of Voting
GENERAL	November 2,3,4 2023
Person Completing this Form	
Name	Amy Alvey
Title	County Clerk
About Voting Location	
<i>Example: Tulip Poplar High, 123 Main Street, County High School</i>	
Name	John Black Community Center
Address	1551 N Hwy 393, Buckner, KY 40010
Type	Vote Center-Countywide
Number of Parking Spaces	Sufficient Parking Spaces?
76 (+85 overflow parking)	yes
Voting Equipment to be Used	
Number	Type of equipment
	Hart Intercivic Verity

Precincts in Voting Location	
Precinct name	Number of registered voters
	Countywide
JBC	56,012

Narrative Plan <i>(please attach additional sheets if needed)</i>
1.) Why is this consolidation of these precincts desirable? <input checked="" type="checkbox"/> This is the same plan used in the last election It is desirable because it makes it convenient for voters and the best use of poll workers
2.) In what manner will Precinct Officers be assigned? <input checked="" type="checkbox"/> This location will be fully staffed with election officials Center will be balanced with previous and new poll workers from all parties, as submitted by local parties.
3.) How will the voting location be publicized to voters? How will the location be noted as a "Vote Center?" Postcards will be mailed to every household in Oldham County, social media, website, newspaper and use of County electronic message boards.
4.) How will the voting location serve as a focal point to meet the needs of a diverse community? Oldham County has always met the needs of all voters and will continue to do so.



John W. Black Community Center
Early Voting
November 2,3,4 2023
76 Parking spaces
85 Overflow Parking Spaces
★ Voting Center Entrance



Commonwealth of Kentucky

Petition to Consolidate Precincts and Precinct Election Officers

County Name	
OLDHAM	
Election	Dates of Voting
GENERAL	November 7, 2023
Person Completing this Form	
Name	Amy Alvey
Title	County Clerk
About Voting Location	
<i>Example: Tulip Poplar High, 123 Main Street, County High School</i>	
Name	LaGrange Baptist Church
Address	1139 Commerce Pkwy, LaGrange, KY 40031
Type	Vote Center-Countywide
Number of Parking Spaces	Sufficient Parking Spaces?
83(+367 overflow parking)	yes
Voting Equipment to be Used	
Number	Type of equipment
	Hart Intercivic Verity

Precincts in Voting Location	
Precinct name	Number of registered voters
	Countywide
LBC	56,012

Narrative Plan <i>(please attach additional sheets if needed)</i>
1.) Why is this consolidation of these precincts desirable? <input checked="" type="checkbox"/> This is the same plan used in the last election
It is desirable because it makes it convenient for voters and the best use of poll workers
2.) In what manner will Precinct Officers be assigned? <input checked="" type="checkbox"/> This location will be fully staffed with election officials
Center will be balanced with previous and new poll workers from all parties, as submitted by local parties.
3.) How will the voting location be publicized to voters? How will the location be noted as a "Vote Center?"
Postcards will be mailed to every household in Oldham County, social media, website, newspaper and use of County electronic message boards.
4.) How will the voting location serve as a focal point to meet the needs of a diverse community?
Oldham County has always met the needs of all voters and will continue to do so.



LaGrange Baptist Church
Election Day
November 7, 2023
83 Primary Parking Spaces
367+ Overflow Parking Spaces
★ Voting Center Entrance



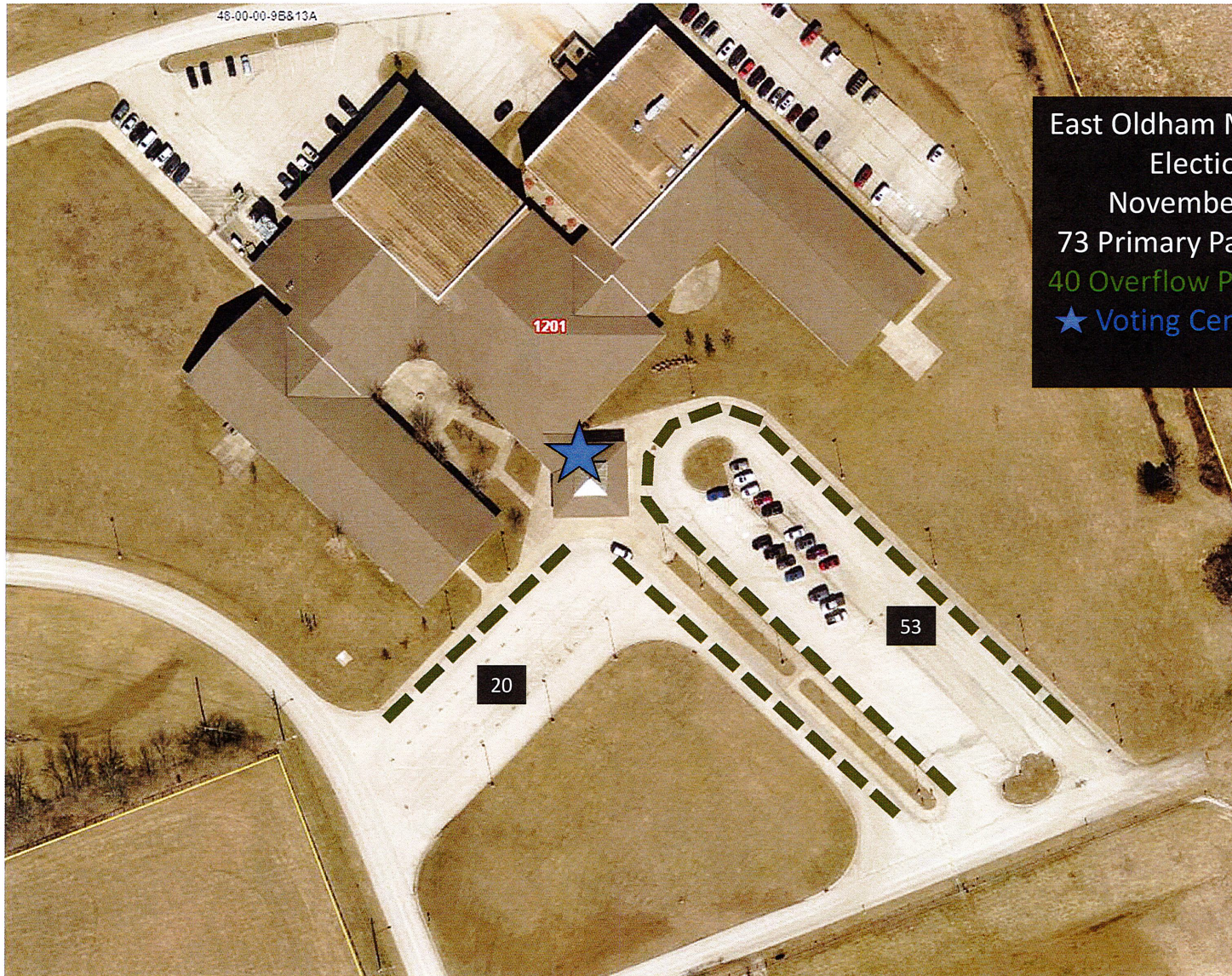
Commonwealth of Kentucky

Petition to Consolidate Precincts and Precinct Election Officers

County Name	
OLDHAM	
Election	Dates of Voting
GENERAL	November 7, 2023
Person Completing this Form	
Name	Amy Alvey
Title	County Clerk
About Voting Location	
<i>Example: Tulip Poplar High, 123 Main Street, County High School</i>	
Name	East Oldham Middle School
Address	1201 E Hwy 22, Crestwood, KY 40014
Type	Vote Center-Countywide
Number of Parking Spaces	Sufficient Parking Spaces?
73(+40 overflow parking)	yes
Voting Equipment to be Used	
Number	Type of equipment
	Hart Intercivic Verity

Precincts in Voting Location	
Precinct name	Number of registered voters
	Countywide
EOMS	56,012

Narrative Plan <i>(please attach additional sheets if needed)</i>
1.) Why is this consolidation of these precincts desirable? <input checked="" type="checkbox"/> This is the same plan used in the last election It is desirable because it makes it convenient for voters and the best use of poll workers
2.) In what manner will Precinct Officers be assigned? <input checked="" type="checkbox"/> This location will be fully staffed with election officials Center will be balanced with previous and new poll workers from all parties, as submitted by local parties.
3.) How will the voting location be publicized to voters? How will the location be noted as a "Vote Center?" Postcards will be mailed to every household in Oldham County, social media, website, newspaper and use of County electronic message boards.
4.) How will the voting location serve as a focal point to meet the needs of a diverse community? Oldham County has always met the needs of all voters and will continue to do so.



East Oldham Middle School
Election Day
November 7, 2023
73 Primary Parking Spaces
40 Overflow Parking Spaces
★ Voting Center Entrance



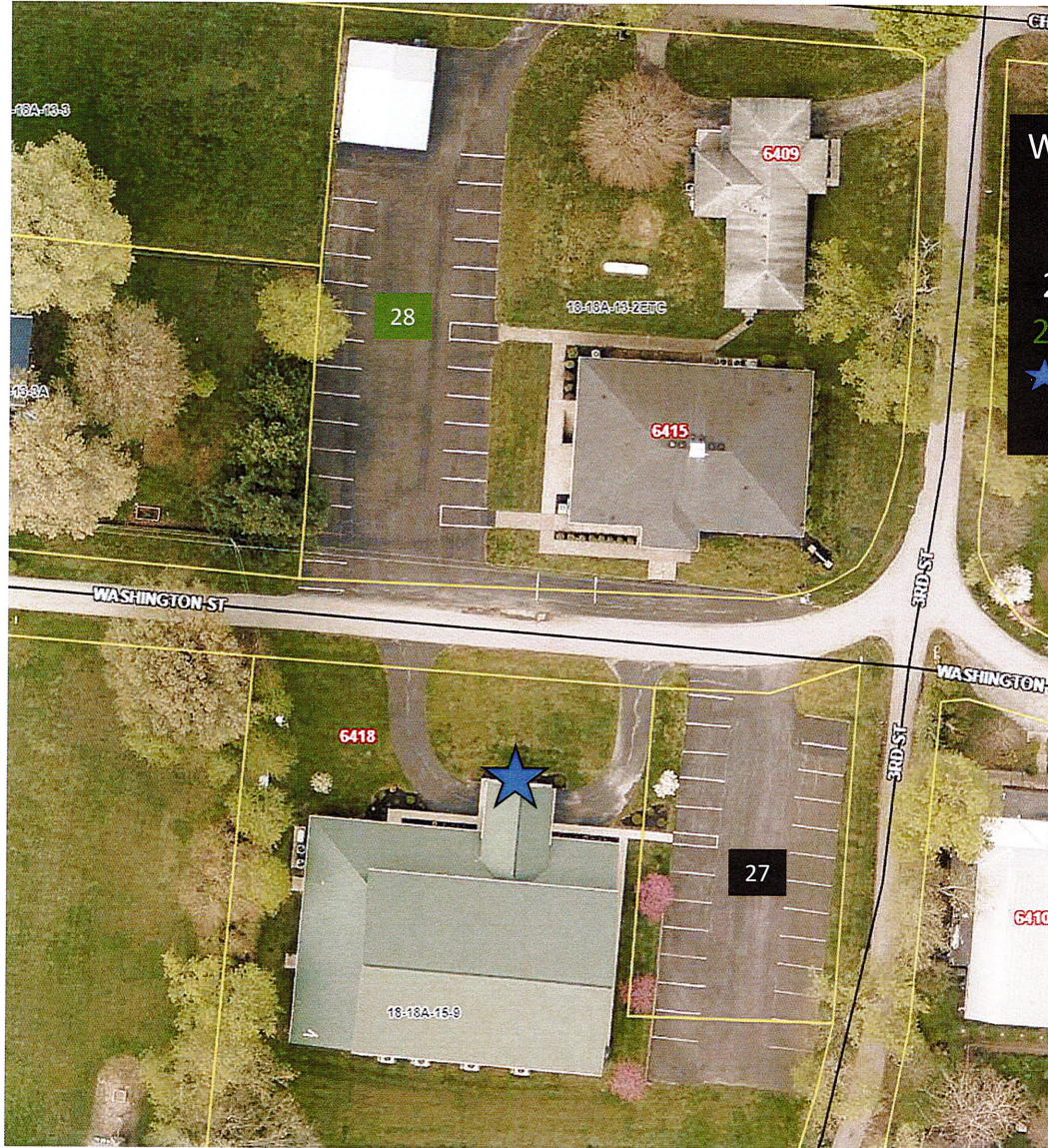
Commonwealth of Kentucky

Petition to Consolidate Precincts and Precinct Election Officers

County Name	
OLDHAM	
Election	Dates of Voting
GENERAL	November 7, 2023
Person Completing this Form	
Name	Amy Alvey
Title	County Clerk
About Voting Location	
<i>Example: Tulip Poplar High, 123 Main Street, County High School</i>	
Name	Westport Baptist Church Life Center
Address	6415 Washington St, Westport, KY 40077
Type	Vote Center-Countywide
Number of Parking Spaces	Sufficient Parking Spaces?
27	yes
Voting Equipment to be Used	
Number	Type of equipment
	Hart Intercivic Verity

Precincts in Voting Location	
Precinct name	Number of registered voters
	Countywide
WBC	56,012

Narrative Plan <i>(please attach additional sheets if needed)</i>
1.) Why is this consolidation of these precincts desirable?
<input checked="" type="checkbox"/> This is the same plan used in the last election
It is desirable because it makes it convenient for voters and the best use of poll workers
2.) In what manner will Precinct Officers be assigned?
<input checked="" type="checkbox"/> This location will be fully staffed with election officials
Center will be balanced with previous and new poll workers from all parties, as submitted by local parties.
3.) How will the voting location be publicized to voters? How will the location be noted as a "Vote Center?"
Postcards will be mailed to every household in Oldham County, social media, website, newspaper and use of County electronic message boards.
4.) How will the voting location serve as a focal point to meet the needs of a diverse community?
Oldham County has always met the needs of all voters and will continue to do so.



Westport Baptist Life Center
Election Day
November 7, 2023
27 Primary Parking Spaces
28 Overflow Parking Spaces
★ Voting Center Entrance



Commonwealth of Kentucky

Petition to Consolidate Precincts and Precinct Election Officers

County Name	
OLDHAM	
Election	Dates of Voting
GENERAL	November 7, 2023
Person Completing this Form	
Name	Amy Alvey
Title	County Clerk
About Voting Location	
<i>Example: Tulip Poplar High, 123 Main Street, County High School</i>	
Name	North Oldham High School
Address	1815 S Hwy 1793, Goshen KY 40026
Type	Vote Center-Countywide
Number of Parking Spaces	Sufficient Parking Spaces?
224(+52 overflow parking)	yes
Voting Equipment to be Used	
Number	Type of equipment
	Hart Intercivic Verity

Precincts in Voting Location	
Precinct name	Number of registered voters
	Countywide
NOHS	56,012

Narrative Plan <i>(please attach additional sheets if needed)</i>
<p>1.) Why is this consolidation of these precincts desirable?</p> <p><input checked="" type="checkbox"/> This is the same plan used in the last election</p> <p>It is desirable because it makes it convenient for voters and the best use of poll workers</p>
<p>2.) In what manner will Precinct Officers be assigned?</p> <p><input checked="" type="checkbox"/> This location will be fully staffed with election officials</p> <p>Center will be balanced with previous and new poll workers from all parties, as submitted by local parties.</p>
<p>3.) How will the voting location be publicized to voters? How will the location be noted as a "Vote Center?"</p> <p>Postcards will be mailed to every household in Oldham County, social media, website, newspaper and use of County electronic message boards.</p>
<p>4.) How will the voting location serve as a focal point to meet the needs of a diverse community?</p> <p>Oldham County has always met the needs of all voters and will continue to do so.</p>



North Oldham High School
Election Day
November 7, 2023
224 Parking spaces
52 Overflow Parking Spaces
★ Voting Center Entrance



Commonwealth of Kentucky

Petition to Consolidate Precincts and Precinct Election Officers

County Name	
OLDHAM	
Election	Dates of Voting
GENERAL	November 7, 2023
Person Completing this Form	
Name	Amy Alvey
Title	County Clerk
About Voting Location	
<i>Example: Tulip Poplar High, 123 Main Street, County High School</i>	
Name	Goshen Elementary
Address	12518 Ridgemoor Dr, Prospect, KY 40059
Type	Vote Center-Countywide
Number of Parking Spaces	Sufficient Parking Spaces?
103(+40 overflow parking)	yes
Voting Equipment to be Used	
Number	Type of equipment
	Hart Intercivic Verity

Precincts in Voting Location	
Precinct name	Number of registered voters
	Countywide
Goshen	56,012

Narrative Plan <i>(please attach additional sheets if needed)</i>
1.) Why is this consolidation of these precincts desirable? <input type="checkbox"/> This is the same plan used in the last election It is desirable because it makes it convenient for voters and the best use of poll workers. This new location will replace Sojourn Church and provide a voting center along the Highway 42 corridor to service the dense population near the County line.
2.) In what manner will Precinct Officers be assigned? <input checked="" type="checkbox"/> This location will be fully staffed with election officials Center will be balanced with previous and new poll workers from all parties, as submitted by local parties.
3.) How will the voting location be publicized to voters? How will the location be noted as a "Vote Center?" Postcards will be mailed to every household in Oldham County, social media, website, newspaper and use of County electronic message boards.
4.) How will the voting location serve as a focal point to meet the needs of a diverse community? Oldham County has always met the needs of all voters and will continue to do so.



Goshen Elementary
Election Day
November 7, 2023
103 Primary Parking Spaces
40 Overflow Parking Spaces
★ Voting Center Entrance



Commonwealth of Kentucky

Petition to Consolidate Precincts and Precinct Election Officers

County Name	
OLDHAM	
Election	Dates of Voting
GENERAL	November 7, 2023
Person Completing this Form	
Name	Amy Alvey
Title	County Clerk
About Voting Location	
<i>Example: Tulip Poplar High, 123 Main Street, County High School</i>	
Name	Oldham County High School
Address	1150 N Hwy 393, Buckner, KY 40010
Type	Vote Center-Countywide
Number of Parking Spaces	Sufficient Parking Spaces?
247(+153 overflow parking)	yes
Voting Equipment to be Used	
Number	Type of equipment
	Hart Intercivic Verity

Precincts in Voting Location	
Precinct name	Number of registered voters
	Countywide
OCHS	56,012

Narrative Plan <i>(please attach additional sheets if needed)</i>
1.) Why is this consolidation of these precincts desirable? <input checked="" type="checkbox"/> This is the same plan used in the last election It is desirable because it makes it convenient for voters and the best use of poll workers
2.) In what manner will Precinct Officers be assigned? <input checked="" type="checkbox"/> This location will be fully staffed with election officials Center will be balanced with previous and new poll workers from all parties, as submitted by local parties.
3.) How will the voting location be publicized to voters? How will the location be noted as a "Vote Center?" Postcards will be mailed to every household in Oldham County, social media, website, newspaper and use of County electronic message boards.
4.) How will the voting location serve as a focal point to meet the needs of a diverse community? Oldham County has always met the needs of all voters and will continue to do so.



Oldham County High School
Election Day
November 7, 2023
247 Primary Parking Spaces
153 Overflow Parking Spaces
★ Voting Center Entrance



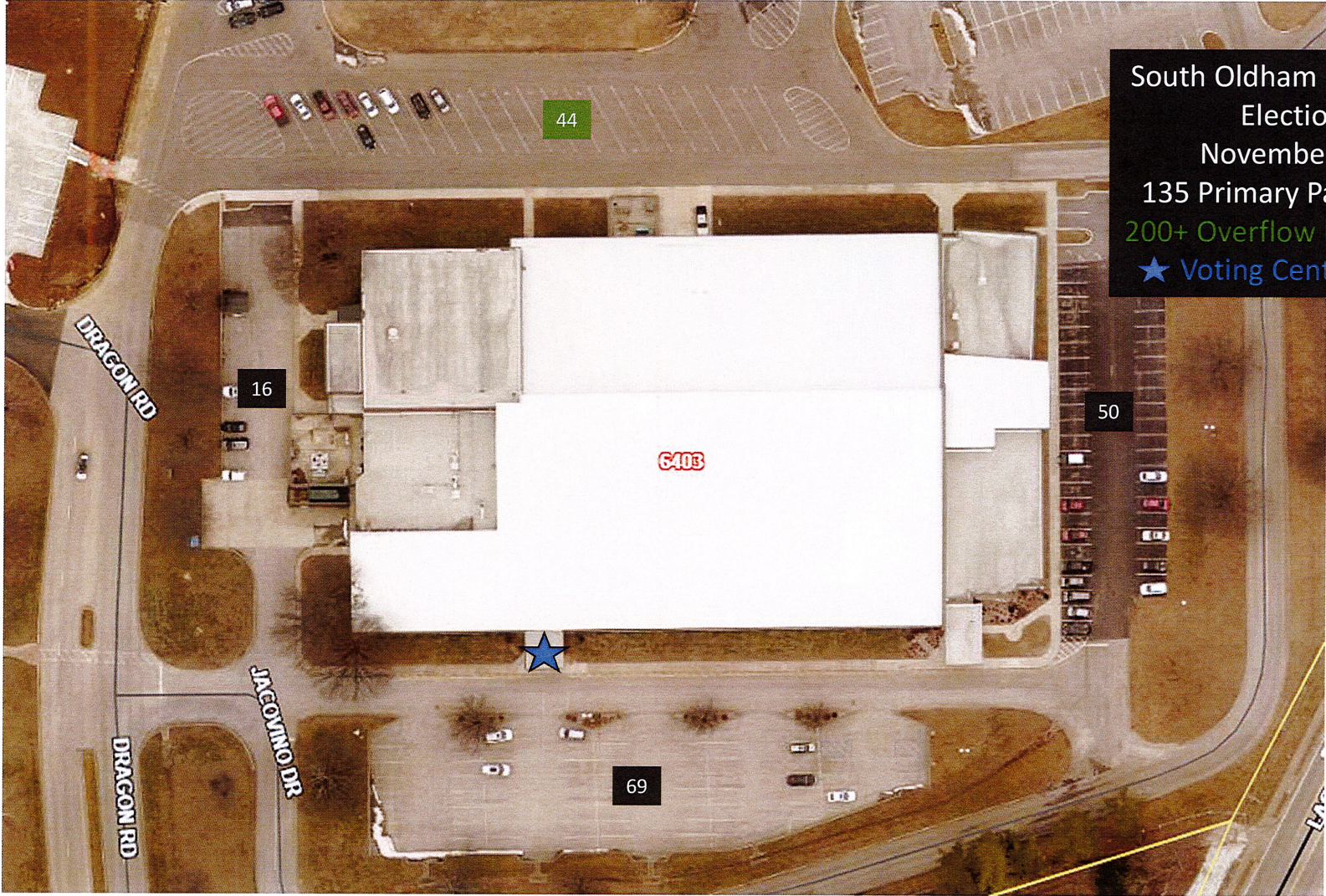
Commonwealth of Kentucky

Petition to Consolidate Precincts and Precinct Election Officers

County Name	
OLDHAM	
Election	Dates of Voting
GENERAL	November 7, 2023
Person Completing this Form	
Name	Amy Alvey
Title	County Clerk
About Voting Location	
<i>Example: Tulip Poplar High, 123 Main Street, County High School</i>	
Name	South Oldham Middle School
Address	6403 W Hwy 146, Crestwood, KY 40014
Type	Vote Center-Countywide
Number of Parking Spaces	Sufficient Parking Spaces?
135(+200+ overflow parking)	yes
Voting Equipment to be Used	
Number	Type of equipment
	Hart Intercivic Verity

Precincts in Voting Location	
Precinct name	Number of registered voters
	Countywide
SOMS	56,012

Narrative Plan <i>(please attach additional sheets if needed)</i>
1.) Why is this consolidation of these precincts desirable? <input checked="" type="checkbox"/> This is the same plan used in the last election <p>It is desirable because it makes it convenient for voters and the best use of poll workers</p>
2.) In what manner will Precinct Officers be assigned? <input checked="" type="checkbox"/> This location will be fully staffed with election officials <p>Center will be balanced with previous and new poll workers from all parties, as submitted by local parties.</p>
3.) How will the voting location be publicized to voters? How will the location be noted as a "Vote Center?" <p>Postcards will be mailed to every household in Oldham County, social media, website, newspaper and use of County electronic message boards.</p>
4.) How will the voting location serve as a focal point to meet the needs of a diverse community? <p>Oldham County has always met the needs of all voters and will continue to do so.</p>



South Oldham Middle School
Election Day
November 7, 2023
135 Primary Parking Spaces
200+ Overflow Parking Spaces
★ Voting Center Entrance



Commonwealth of Kentucky

Petition to Consolidate Precincts and Precinct Election Officers

County Name	
OLDHAM	
Election	Dates of Voting
GENERAL	November 7, 2023
Person Completing this Form	
Name	Amy Alvey
Title	County Clerk
About Voting Location	
<i>Example: Tulip Poplar High, 123 Main Street, County High School</i>	
Name	Crestwood Baptist Church
Address	6400 Sweetbay Dr, Crestwood, KY 40014
Type	Vote Center-Countywide
Number of Parking Spaces	Sufficient Parking Spaces?
123 (+267 overflow)	yes
Voting Equipment to be Used	
Number	Type of equipment
	Hart Intercivic Verity

Precincts in Voting Location	
Precinct name	Number of registered voters
	Countywide
CBC	56,012

Narrative Plan <i>(please attach additional sheets if needed)</i>
<p>1.) Why is this consolidation of these precincts desirable?</p> <p><input checked="" type="checkbox"/> This is the same plan used in the last election</p> <p>It is desirable because it makes it convenient for voters and the best use of poll workers</p>
<p>2.) In what manner will Precinct Officers be assigned?</p> <p><input checked="" type="checkbox"/> This location will be fully staffed with election officials</p> <p>Center will be balanced with previous and new poll workers from all parties, as submitted by local parties.</p>
<p>3.) How will the voting location be publicized to voters? How will the location be noted as a "Vote Center?"</p> <p>Postcards will be mailed to every household in Oldham County, social media, website, newspaper and use of County electronic message boards.</p>
<p>4.) How will the voting location serve as a focal point to meet the needs of a diverse community?</p> <p>Oldham County has always met the needs of all voters and will continue to do so.</p>



Crestwood Baptist Church
Election Day
November 7, 2023
123 Primary Parking Spaces
267+ Overflow Parking Spaces
★ Voting Center Entrance



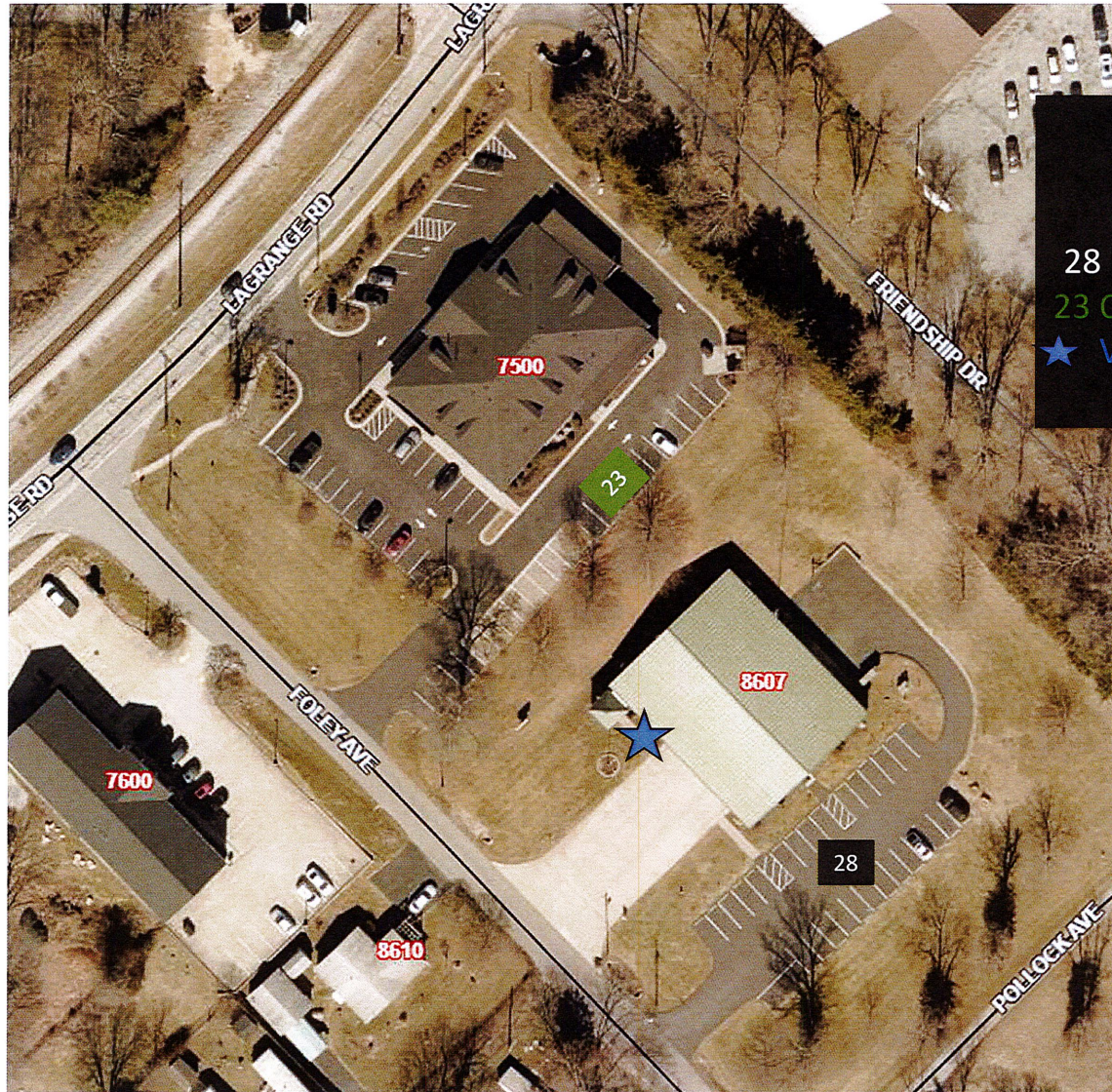
Commonwealth of Kentucky

Petition to Consolidate Precincts and Precinct Election Officers

County Name	
OLDHAM	
Election	Dates of Voting
GENERAL	November 7, 2023
Person Completing this Form	
Name	Amy Alvey
Title	County Clerk
About Voting Location	
<i>Example: Tulip Poplar High, 123 Main Street, County High School</i>	
Name	Pewee Valley Fire
Address	8607 Foley Ave, Pewee Valley, KY 40056
Type	Vote Center-Countywide
Number of Parking Spaces	Sufficient Parking Spaces?
28(+23 overflow parking)	yes
Voting Equipment to be Used	
Number	Type of equipment
	Hart Intercivic Verity

Precincts in Voting Location	
Precinct name	Number of registered voters
	Countywide
PVF	56,012

Narrative Plan <i>(please attach additional sheets if needed)</i>
1.) Why is this consolidation of these precincts desirable? <input checked="" type="checkbox"/> This is the same plan used in the last election It is desirable because it makes it convenient for voters and the best use of poll workers
2.) In what manner will Precinct Officers be assigned? <input checked="" type="checkbox"/> This location will be fully staffed with election officials Center will be balanced with previous and new poll workers from all parties, as submitted by local parties.
3.) How will the voting location be publicized to voters? How will the location be noted as a "Vote Center?" Postcards will be mailed to every household in Oldham County, social media, website, newspaper and use of County electronic message boards.
4.) How will the voting location serve as a focal point to meet the needs of a diverse community? Oldham County has always met the needs of all voters and will continue to do so.



Pewee Valley Fire
Election Day
November 7, 2023
28 Primary Parking Spaces
23 Overflow Parking Spaces
★ Voting Center Entrance

