



**Trimble County Clerk
Tina R. Browning**

P.O. Box 262
Bedford, KY 40006-0262
(502) 255-7174
Fax (502) 255-7045



07-17-23

The Trimble County Board of Elections voted to change our voting plan for the General Election 2023 to Countywide Vote Centers. There will be the same number of locations and located in the same buildings.

Thank you,


Tina R. Browning

Trimble County Clerk



Commonwealth of Kentucky

County Election Planning Report

County Name	
TRIMBLE	
Election	
GENERAL ELECTION 2023	
Person Completing this Form	
Name	Tina R. Browning
Title	Trimble County Clerk
Phone	502-255-7174

For in-person voting on Election Day, the County Board of Elections will (check one):

- Consolidate precincts and precinct election officers (Requires Form SBE 74); *Changing to County wide Vote Centers*
- Utilize the same consolidation plan that was used in a previous election (Requires previous Form SBE 74); or
- Open all existing precincts.

Excused in-person absentee voting will occur (check one):

- Within the County Clerk's office; or
- In another location within the county (Requires Form SBE 74).

No-excuse in-person absentee voting will occur (check one):

- Within the County Clerk's office; or
- In another location within the county (Requires Form SBE 74).

Absentee ballot drop-boxes will be located (minimum of one location required):

within the County Clerk's office

within the County Clerk's office

I have attached:

- All required Form SBE 74 sheets
- Relevant Maps
- Supplemental Narrative

Tina R. Browning 07-17-23
 Signature Date



Commonwealth of Kentucky

Petition to Consolidate Precincts and Precinct Election Officers

County Name	
TRIMBLE	
Election	Dates of Voting
GENERAL	11-07-23
Person Completing this Form	
Name	Tina R. Browning
Title	Trimble County Clerk
About Voting Location	
<i>Example: Tulip Poplar High, 123 Main Street, County High School</i>	
Name	Bedford Elementary School
Address	204 Mt. Pleasant Rd, Bedford, KY 40006
Type	Cafeteria
Number of Parking Spaces	Sufficient Parking Spaces?
100	yes
Voting Equipment to be Used	
Number	Type of equipment
4	Verity Scanners
7	Knowink E Poll Books
1	Verity Touch Writer

Precincts in Voting Location	
Precinct name	Number of registered voters
A101 West Milton	
A102 North Milton	
A103 LEEPOT	
B101 South Bedford	
B103 Burrows	
B104 North Bedford	
C101 Palmyra	
C103 East Milton	
C104 South Milton	
D101 Antioch	

Narrative Plan <i>(please attach additional sheets if needed)</i>
<p>1.) Why is this consolidation of these precincts desirable?</p> <p><input type="checkbox"/> This is the same plan used in the last election</p> <p>Changing to County wide Voter Center</p> <p>These 7 precincts have been located at this location since 2009. It provides good voter access, parking and space. Our county is rural and there are no other places that can provide the access, parking & space. I cannot find enough Election Officers to cover the precincts and there is only 1 spare scanner. We are changing to a vote center for voter convenience.</p>
<p>2.) In what manner will Precinct Officers be assigned?</p> <p><input checked="" type="checkbox"/> This location will be fully staffed with election officials</p> <p>Each e-pollbook will have a Clerk, 4 Judges will be assisting with the ballot table and 4 judges will be assisting with the scanners and Touch writers and 4 Sheriff's to keep the lines moving. We are also planning on having a forms table for voters who need to fill out any forms, this will keep the lines moving also.</p>
<p>3.) How will the voting location be publicized to voters? How will the location be noted as a "Vote Center?"</p> <p>This location has been used since 2009, housing 7 precincts. We will advertise in the local paper plus have signage.</p>
<p>4.) How will the voting location serve as a focal point to meet the needs of a diverse community?</p> <p>No voter would travel more than 9 miles to their voting location. With this plan nothing would be any different than in years past except the use of less Verity Scanners, less Election Officers and the ability for the voter to cast their ballot at any location. We cannot find enough Election Officers that will work and we only have one spare Scanner. If more than one Scanner fails on Election day we have no more to replace it.</p>



Commonwealth of Kentucky

Petition to Consolidate Precincts and Precinct Election Officers

County Name	
Trimble	
Election	Dates of Voting
General 11-07-23	
Person Completing this Form	
Name	Tina R. Browning
Title	Trimble County Clerk
About Voting Location	
<i>Example: Tulip Poplar High, 123 Main Street, County High School</i>	
Name	Bedford Elementary School
Address	204 Mount Pleasant, Bedford, KY 40006
Type	Cafeteria
Number of Parking Spaces	Sufficient Parking Spaces?
100	yes
Voting Equipment to be Used	
Number	Type of equipment
4	Verity Scan
7	Knowink e poll books
1	Verity Touch Writers

Precincts in Voting Location	
Precinct name	Number of registered voters
D102 Providence	
D103 East Bedford	

Narrative Plan <i>(please attach additional sheets if needed)</i>
1.) Why is this consolidation of these precincts desirable? <input type="checkbox"/> This is the same plan used in the last election
2.) In what manner will Precinct Officers be assigned? <input type="checkbox"/> This location will be fully staffed with election officials
3.) How will the voting location be publicized to voters? How will the location be noted as a "Vote Center?"
4.) How will the voting location serve as a focal point to meet the needs of a diverse community?



Commonwealth of Kentucky

Petition to Consolidate Precincts and Precinct Election Officers

County Name	
TRIMBLE	
Election	Dates of Voting
GENERAL 11-07-23	
Person Completing this Form	
Name	Tina R. Browning
Title	Trimble County Clerk
About Voting Location	
<i>Example: Tulip Poplar High, 123 Main Street, County High School</i>	
Name	Milton Elementary School
Address	9245 Hwy 421 N, Milton, KY 40045
Type	Cafeteria
Number of Parking Spaces	Sufficient Parking Spaces?
75	yes
Voting Equipment to be Used	
Number	Type of equipment
3	Verity Scanners
5	Knowink E Poll Books
1	Verity Touch Writer

Precincts in Voting Location	
Precinct name	Number of registered voters
A101 West Milton	
A102 North Milton	
A103 Leeport	
B101 South Bedford	
B103 Burrows	
B104 North Bedford	
C101 Palmyra	
C103 East Milton	
C104 South Milton	
D101 Antioch	

Narrative Plan <i>(please attach additional sheets if needed)</i>
<p>1.) Why is this consolidation of these precincts desirable?</p> <p><input type="checkbox"/> This is the same plan used in the last election</p> <p><i>Changing to County wide Vote Center</i></p> <p>These 5 precincts have been located at this location since 2009. It provides good voter access, parking and space. Our county is rural and there are no other places that can provide the access, parking & space. I cannot find enough Election Officers to cover the precincts and there is only 1 spare scanner. We are changing to a vote center for voter convenience.</p>
<p>2.) In what manner will Precinct Officers be assigned?</p> <p><input checked="" type="checkbox"/> This location will be fully staffed with election officials</p> <p>Each e-pollbook will have a Clerk, 3 Judges will be assisting with the ballot table and 3 judges will be assisting with the scanners and Touch writers and 3 Sheriff's to keep the lines moving. We are also planning on having a forms table for voters who need to fill out any forms, this will keep the lines moving also.</p>
<p>3.) How will the voting location be publicized to voters? How will the location be noted as a "Vote Center?"</p> <p>This location has been used since 2009, housing 5 precincts. We will advertise in the local paper plus have signage.</p>
<p>4.) How will the voting location serve as a focal point to meet the needs of a diverse community?</p> <p>No voter would travel more than 8 miles to their voting location. With this plan nothing would be any different than in years past except the use of less Verity Scanners, less Election Officers and the ability for the voter to cast their ballot at any location. We cannot find enough Election Officers that will work and we only have one spare Scanner. If more than one Scanner fails on Election day we have no more to replace it.</p>



Commonwealth of Kentucky

Petition to Consolidate Precincts and Precinct Election Officers

County Name	
Trimble	
Election	Dates of Voting
General 11-07-23	
Person Completing this Form	
Name	Tina R. Browning
Title	Trimble County Clerk
About Voting Location	
<i>Example: Tulip Poplar High, 123 Main Street, County High School</i>	
Name	Milton Elementary School
Address	9245 Hwy 421 n, Milton, KY 40045
Type	Cafeteria
Number of Parking Spaces	Sufficient Parking Spaces?
75	yes
Voting Equipment to be Used	
Number	Type of equipment
3	Verity Scan
5	Knowink e poll books
1	Verity Touch Writers

Precincts in Voting Location	
Precinct name	Number of registered voters
D102 Providence	
D103 East Bedford	

Narrative Plan <i>(please attach additional sheets if needed)</i>
1.) Why is this consolidation of these precincts desirable? <input type="checkbox"/> This is the same plan used in the last election
2.) In what manner will Precinct Officers be assigned? <input type="checkbox"/> This location will be fully staffed with election officials
3.) How will the voting location be publicized to voters? How will the location be noted as a "Vote Center?"
4.) How will the voting location serve as a focal point to meet the needs of a diverse community?



Commonwealth of Kentucky

Petition to Consolidate Precincts and Precinct Election Officers

County Name	
TRIMBLE	
Election	Dates of Voting
GENERAL	10-25-23 / 11-01-23 / 11-02-23 / 11-04-23
Person Completing this Form	
Name	Tina R. Browning
Title	Trimble County Clerk
About Voting Location	
<i>Example: Tulip Poplar High, 123 Main Street, County High School</i>	
Name	Trimble County Courthouse
Address	30 Hwy 42 E, Bedford, KY 40006
Type	Courthouse
Number of Parking Spaces	Sufficient Parking Spaces?
30	yes
Voting Equipment to be Used	
Number	Type of equipment
3	Verity Scanners, Mail, Absentee, & Early Voting
2	Knowink E Poll Books
1	Verity Touch Writer

Precincts in Voting Location	
Precinct name	Number of registered voters
A101 West Milton	
A102 North Milton	
A103 Leeport	
B101 South Bedford	
B103 Burrows	
B104 North Bedford	
C101 Palmyra	
C103 East Milton	
C104 South Milton	
D101 Antioch	

Narrative Plan <i>(please attach additional sheets if needed)</i>
<p>1.) Why is this consolidation of these precincts desirable? <input checked="" type="checkbox"/> This is the same plan used in the last election</p> <p>This location has always been the Absentee, Mail and Early Voting site. It provides good voter access, parking and space.</p>
<p>2.) In what manner will Precinct Officers be assigned? <input checked="" type="checkbox"/> This location will be fully staffed with election officials</p> <p>My staff will cover the Absentee voting and the Early voting will be covered by 1 Clerk, 2 Judges and a Sheriff. We will have pary periody.</p>
<p>3.) How will the voting location be publicized to voters? How will the location be noted as a "Vote Center?"</p> <p>This location has always been used for this purpose. We will advertise in the local paper, social media, flashing sign on the courthouse lawn and othe signage.</p>
<p>4.) How will the voting location serve as a focal point to meet the needs of a diverse community?</p> <p>No voter would travel more than 12 miles to this voting location. With this plan nothing would be any different than in years past.</p>



Commonwealth of Kentucky

Petition to Consolidate Precincts and Precinct Election Officers

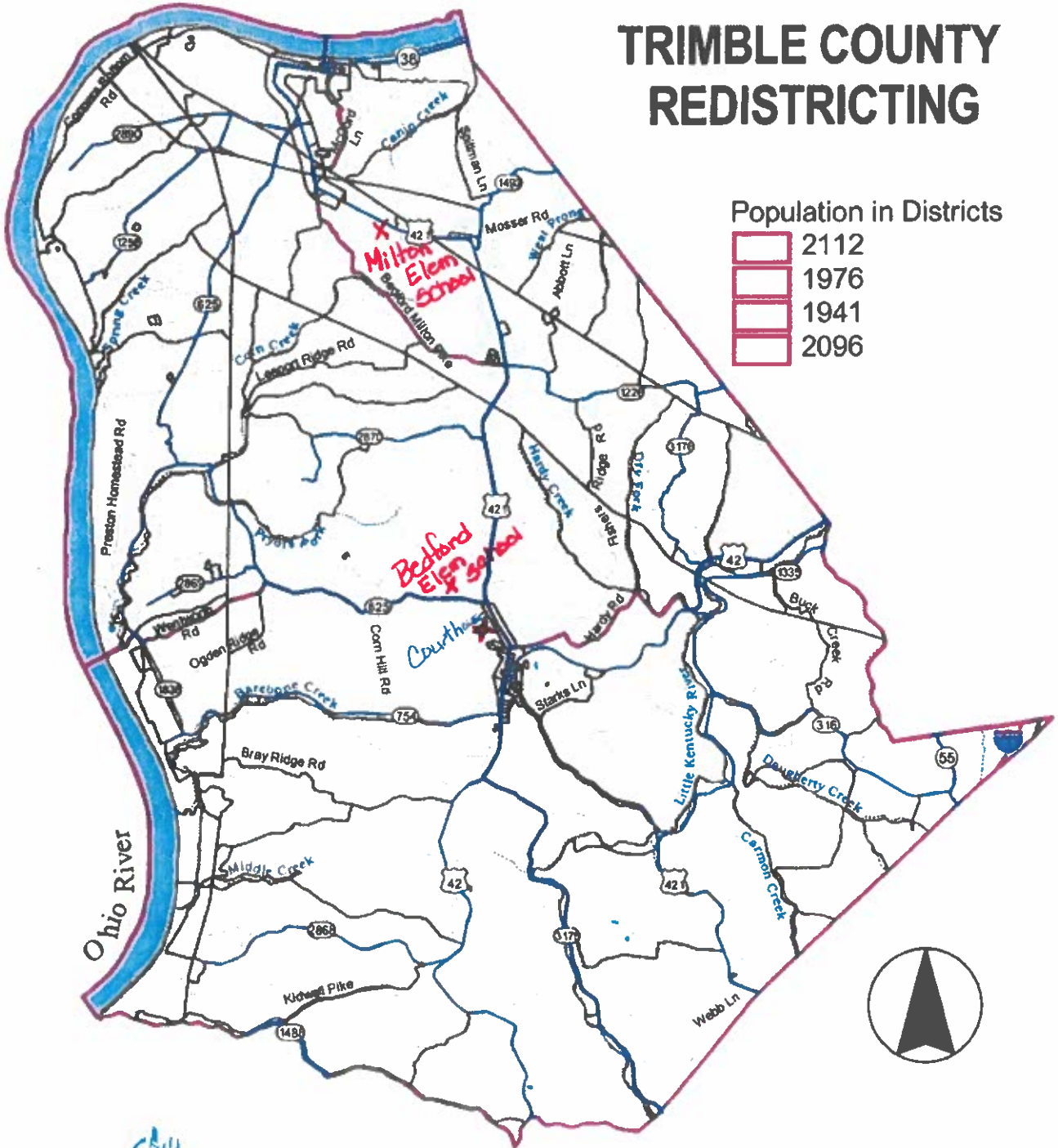
County Name	
Trimble	
Election	Dates of Voting
General 10-25-23 / 11-01-23 / 11-02-23 / 11-04-23	
Person Completing this Form	
Name	Tina R. Browning
Title	Trimble County Clerk
About Voting Location	
<i>Example: Tulip Poplar High, 123 Main Street, County High School</i>	
Name	Trimble County Courthouse
Address	30 Hwy 42 E, Bedford, KY 40006
Type	Courthouse
Number of Parking Spaces	Sufficient Parking Spaces?
30	yes
Voting Equipment to be Used	
Number	Type of equipment
3	Verity Scan Mail, Absentee, & Early Voting
2	Knowink e poll books
1	Verity Touch Writers

Precincts in Voting Location	
Precinct name	Number of registered voters
D102 Providence	
D103 East Bedford	

Narrative Plan <i>(please attach additional sheets if needed)</i>	
1.) Why is this consolidation of these precincts desirable? <input type="checkbox"/> This is the same plan used in the last election	
2.) In what manner will Precinct Officers be assigned? <input type="checkbox"/> This location will be fully staffed with election officials	
3.) How will the voting location be publicized to voters? How will the location be noted as a "Vote Center?"	
4.) How will the voting location serve as a focal point to meet the needs of a diverse community?	

TRIMBLE COUNTY REDISTRICTING

Population in Districts



1 0 1 2 Kilometers



1 0 1 2 Miles



Legend

- Interstate
- State Roads
- Local Roads
- Streams

