



Commonwealth of Kentucky

County Election Planning Report

County Name	
Lewis	
Election	
2024 Primary Election	
Person Completing this Form	
Name	Leslie A. Collier
Title	County Clerk
Phone	(606) 796-3062

For in-person voting on Election Day, the County Board of Elections will (check one):

- Consolidate precincts and precinct election officers (Requires Form SBE 74);
- Utilize the same consolidation plan that was used in a previous election (Requires previous Form SBE 74); or
- Open all existing precincts.

Excused in-person absentee voting will occur (check one):

- Within the County Clerk's office; or
- In another location within the county (Requires Form SBE 74).

No-excuse in-person absentee voting will occur (check one):

- Within the County Clerk's office; or
- In another location within the county (Requires Form SBE 74).

Absentee ballot drop-boxes will be located (minimum of one location required):

Lewis County Clerk's Office @ 112 Second St, Vanceburg

I have attached:

- All required Form SBE 74 sheets
- Relevant Maps
- Supplemental Narrative


Signature

2/8/24
Date



Commonwealth of Kentucky

Petition to Consolidate Precincts and Precinct Election Officers

County Name	
Lewis	
Election	Dates of Voting
2024 Primary	5/8 - 5/10 & 5/13 - 5/15
Person Completing this Form	
Name	Leslie A. Collier
Title	Lewis County Clerk
About Voting Location	
<i>Example: Tullip Poplar High, 123 Main Street, County High School</i>	
Name	Lewis County Clerk's Office
Address	112 Second St, Vanceburg
Type	Courthouse
Number of Parking Spaces	Sufficient Parking Spaces?
25+	Yes
Voting Equipment to be Used	
Number	Type of equipment
1	KnowInk E Poll Books
1	Verity Scans
1	Verity T/W
1	Verity Print on Demand

Precincts in Voting Location	
Precinct name	Number of registered voters
All	9,972

Narrative Plan *(please attach additional sheets if needed)*

1.) Why is this consolidation of these precincts desirable?
 This is the same plan used in the last election

In-Person Absentee Voting has always been in the Clerk's Office on the 2nd floor. It has adequate space, access and parking.

2.) In what manner will Precinct Officers be assigned?
 This location will be fully staffed with election officials

My staff will cover the Absentee Voting.

3.) How will the voting location be publicized to voters? How will the location be noted as a "Vote Center?"
Newspaper, website, social media, radio, etc.

4.) How will the voting location serve as a focal point to meet the needs of a diverse community?

Our courthouse is a central location for Absentee & Early Voting. It is well known and frequented by all county residents. Countywide Vote Centers on Election Day at Lewis County Elementary Schools provide easy access and are centrally located to all voters.



Commonwealth of Kentucky

Petition to Consolidate Precincts and Precinct Election Officers

County Name	
Lewis	
Election	Dates of Voting
2024 Primary	5/16 - 5/18
Person Completing this Form	
Name	Leslie A. Collier
Title	Lewis County Clerk
About Voting Location	
<i>Example: Tullip Poplar High, 123 Main Street, County High School</i>	
Name	Lewis County Courthouse
Address	112 Second St, Vanceburg
Type	Courthouse
Number of Parking Spaces	Sufficient Parking Spaces?
25+	Yes
Voting Equipment to be Used	
Number	Type of equipment
1	KnowInk E Poll Books
1	Verity Scans
1	Verity T/W
1	Verity Print on Demand

Precincts in Voting Location	
Precinct name	Number of registered voters
All	9,972

Narrative Plan <i>(please attach additional sheets if needed)</i>
1.) Why is this consolidation of these precincts desirable? <input checked="" type="checkbox"/> This is the same plan used in the last election Early Voting is upstairs on the 3rd floor of the courthouse. It has adequate space, access and parking.
2.) In what manner will Precinct Officers be assigned? <input checked="" type="checkbox"/> This location will be fully staffed with election officials This location will be fully staffed with election officials. We will ensure party parity to the best of our abilities.
3.) How will the voting location be publicized to voters? How will the location be noted as a "Vote Center?" Newspaper, website, social media, radio, etc.
4.) How will the voting location serve as a focal point to meet the needs of a diverse community? Our courthouse is a central location for Absentee & Early Voting. It is well known and frequented by all county residents. Countywide Vote Centers on Election Day at Lewis County Elementary Schools provide easy access and are centrally located to all voters.



Commonwealth of Kentucky

Petition to Consolidate Precincts and Precinct Election Officers

County Name	
Lewis	
Election	Dates of Voting
2024 Primary	5/21
Person Completing this Form	
Name	Leslie A. Collier
Title	Lewis County Clerk
About Voting Location	
<i>Example: Tullip Poplar High, 123 Main Street, County High School</i>	
Name	Garrison Elementary School
Address	79 Garrison Elementary, Garrison
Type	School
Number of Parking Spaces	Sufficient Parking Spaces?
50+	Yes
Voting Equipment to be Used	
Number	Type of equipment
2	KnowInk E Poll Books
2	Verity Scans
1	Verity T/W
2	Verity Print on Demand

Precincts in Voting Location	
Precinct name	Number of registered voters
All	9,972

Narrative Plan <i>(please attach additional sheets if needed)</i>
1.) Why is this consolidation of these precincts desirable? <input checked="" type="checkbox"/> This is the same plan used in the last election This plan has worked well for the past two elections, 23 Primary & 23 General.
2.) In what manner will Precinct Officers be assigned? <input checked="" type="checkbox"/> This location will be fully staffed with election officials This location will be fully staffed with election officials. We will ensure party parity to the best of our abilities.
3.) How will the voting location be publicized to voters? How will the location be noted as a "Vote Center?" Newspaper, website, social media, radio, etc.
4.) How will the voting location serve as a focal point to meet the needs of a diverse community? Our courthouse is a central location for Absentee & Early Voting. It is well known and frequented by all county residents. Countywide Vote Centers on Election Day at Lewis County Elementary Schools provide easy access and are centrally located to all voters.



Commonwealth of Kentucky

Petition to Consolidate Precincts and Precinct Election Officers

County Name	
Lewis	
Election	Dates of Voting
2024 Primary	5/21
Person Completing this Form	
Name	Leslie A. Collier
Title	Lewis County Clerk
About Voting Location	
<i>Example: Tullip Poplar High, 123 Main Street, County High School</i>	
Name	Laurel Elementary School
Address	116 Laurel School Rd, Vanceburg
Type	School
Number of Parking Spaces	Sufficient Parking Spaces?
30+	Yes
Voting Equipment to be Used	
Number	Type of equipment
2	KnowInk E Poll Books
2	Verity Scans
1	Verity T/W
1	Verity Print on Demand

Precincts in Voting Location	
Precinct name	Number of registered voters
All	9,972

Narrative Plan <i>(please attach additional sheets if needed)</i>
1.) Why is this consolidation of these precincts desirable?
<input checked="" type="checkbox"/> This is the same plan used in the last election
This plan has worked well for the past two elections, 23 Primary & 23 General.
2.) In what manner will Precinct Officers be assigned?
<input checked="" type="checkbox"/> This location will be fully staffed with election officials
This location will be fully staffed with election officials. We will ensure party parity to the best of our abilities.
3.) How will the voting location be publicized to voters? How will the location be noted as a "Vote Center?"
Newspaper, website, social media, radio, etc.
4.) How will the voting location serve as a focal point to meet the needs of a diverse community?
Our courthouse is a central location for Absentee & Early Voting. It is well known and frequented by all county residents. Countywide Vote Centers on Election Day at Lewis County Elementary Schools provide easy access and are centrally located to all voters.



Commonwealth of Kentucky

Petition to Consolidate Precincts and Precinct Election Officers

County Name	
Lewis	
Election	Dates of Voting
2024 Primary	5/21
Person Completing this Form	
Name	Leslie A. Collier
Title	Lewis County Clerk
About Voting Location	
<i>Example: Tulip Poplar High, 123 Main Street, County High School</i>	
Name	Lewis County Middle School
Address	51 Middle School Ln, Vanceburg
Type	School
Number of Parking Spaces	Sufficient Parking Spaces?
75+	Yes
Voting Equipment to be Used	
Number	Type of equipment
3	Knowink E Poll Books
2	Verity Scans
1	Verity T/W
3	Verity Print on Demand

Precincts in Voting Location	
Precinct name	Number of registered voters
All	9,972

Narrative Plan <i>(please attach additional sheets if needed)</i>
1.) Why is this consolidation of these precincts desirable? <input checked="" type="checkbox"/> This is the same plan used in the last election This plan has worked well for the past two elections, 23 Primary & 23 General.
2.) In what manner will Precinct Officers be assigned? <input checked="" type="checkbox"/> This location will be fully staffed with election officials This location will be fully staffed with election officials. We will ensure party parity to the best of our abilities.
3.) How will the voting location be publicized to voters? How will the location be noted as a "Vote Center?" Newspaper, website, social media, radio, etc.
4.) How will the voting location serve as a focal point to meet the needs of a diverse community? Our courthouse is a central location for Absentee & Early Voting. It is well known and frequented by all county residents. Countywide Vote Centers on Election Day at Lewis County Elementary Schools provide easy access and are centrally located to all voters.



Commonwealth of Kentucky

Petition to Consolidate Precincts and Precinct Election Officers

County Name	
Lewis	
Election	Dates of Voting
2024 Primary	5/21
Person Completing this Form	
Name	Leslie A. Collier
Title	Lewis County Clerk
About Voting Location	
<i>Example: Tulip Poplar High, 123 Main Street, County High School</i>	
Name	Tollesboro Elementary School
Address	2431 KY 10, Tollesboro
Type	School
Number of Parking Spaces	Sufficient Parking Spaces?
50+	Yes
Voting Equipment to be Used	
Number	Type of equipment
3	KnowInk E Poll Books
2	Verity Scans
1	Verity T/W
3	Verity Print on Demand

Precincts in Voting Location	
Precinct name	Number of registered voters
All	9,972

Narrative Plan <i>(please attach additional sheets if needed)</i>
1.) Why is this consolidation of these precincts desirable? <input checked="" type="checkbox"/> This is the same plan used in the last election
This plan has worked well for the past two elections, 23 Primary & 23 General.
2.) In what manner will Precinct Officers be assigned? <input checked="" type="checkbox"/> This location will be fully staffed with election officials
This location will be fully staffed with election officials. We will ensure party parity to the best of our abilities.
3.) How will the voting location be publicized to voters? How will the location be noted as a "Vote Center?"
Newspaper, website, social media, radio, etc.
4.) How will the voting location serve as a focal point to meet the needs of a diverse community?
Our courthouse is a central location for Absentee & Early Voting. It is well known and frequented by all county residents. Countywide Vote Centers on Election Day at Lewis County Elementary Schools provide easy access and are centrally located to all voters.



LESLIE A. COLLIER
LEWIS COUNTY CLERK

leslie.collier@ky.gov

February 8, 2024

State Board of Elections:

Lewis County Board of Elections met on Wednesday, February 7th to discuss and vote on an election plan for the 2024 Primary Election. Absentee Voting will take place in our office on the 2nd floor of the Courthouse and Early Voting on the 3rd floor of the Courthouse. Election Day Voting will take place at 4 of our Vote Centers, with a Vote Center in each Precinct. On Election Day, our voting plan will be similar as what was used for both elections in 2023, plus doubling the equipment at 2 of our more frequented Vote Centers. The plan worked well in 2023 and we feel that doubling the equipment for the Federal Elections will be more than sufficient for the higher turnouts that we are anticipating.

In the 2022 General Election, clerks with an equipment setup similar to ours, determined that in extreme situations with a long, 2-sided ballot, a max of 1,000 ballots could be printed during polling hours. Though a 2022 G ballot is not common, our plan would allow our Vote Centers to handle more than 9,000 voters on Election Day with a regular length ballot. Lewis County has never had a 90% turnout on Election Day to my knowledge. We anticipate approximately 3,000 - 3,500 votes in the Primary and 5,400 - 5,900 votes in the General. I have no doubt that our equipment setup for the upcoming election will more than suffice. Please see the attached plan documents and map.

Sincerely,

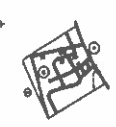
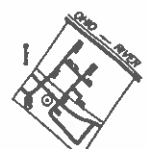
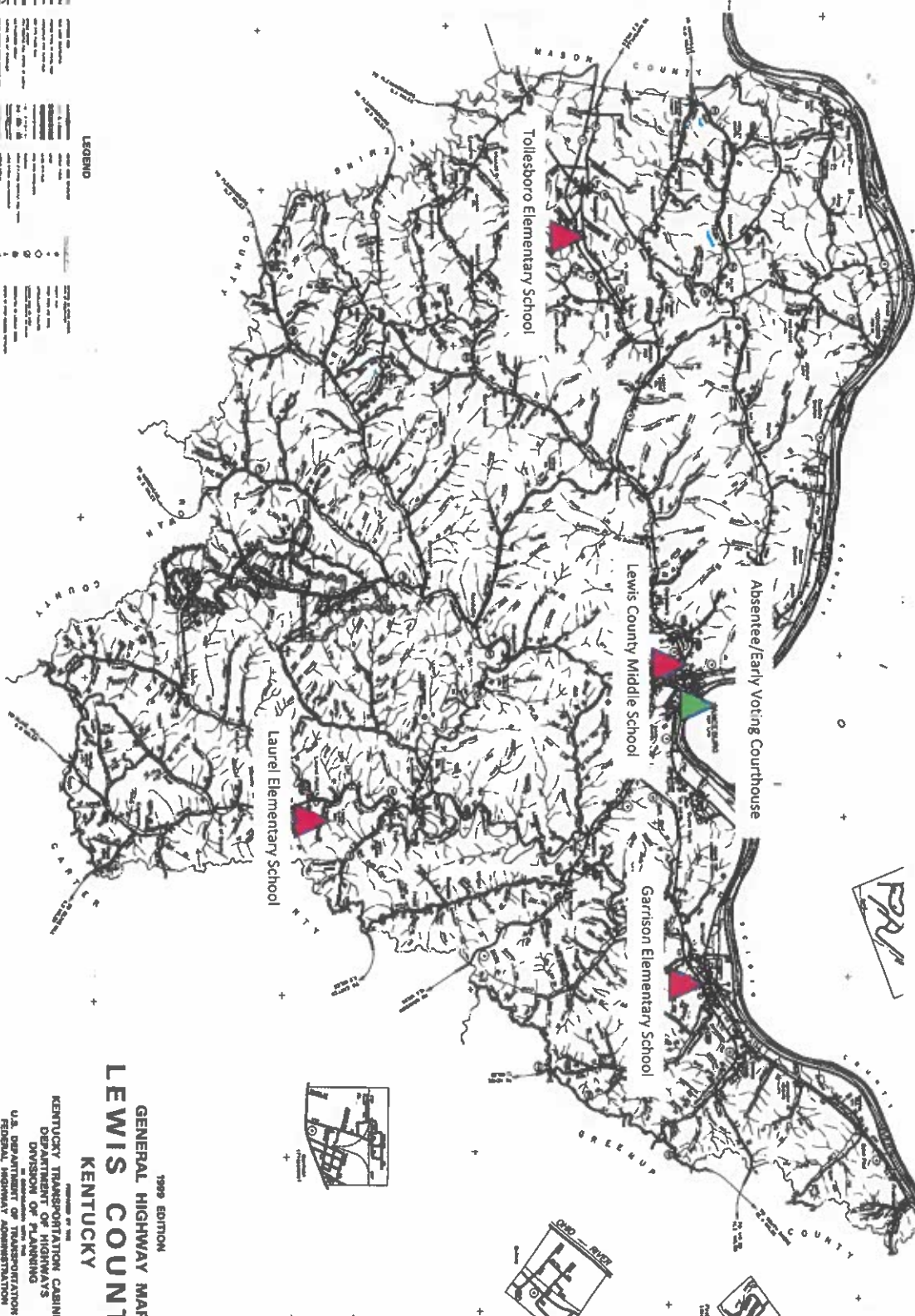
Leslie A. Collier



Lewis County Election Map

1 Absentee/Early Voting Location

4 - Vote Centers



1999 EDITION
 GENERAL HIGHWAY MAP
LEWIS COUNTY
 KENTUCKY

DESIGNED BY THE
 KENTUCKY TRANSPORTATION CABINET
 DEPARTMENT OF HIGHWAYS
 DIVISION OF PLANNING
 IN COOPERATION WITH THE
 U.S. DEPARTMENT OF TRANSPORTATION
 FEDERAL HIGHWAY ADMINISTRATION

SCALE: 1:50,000



LEGEND

	INTERSTATE HIGHWAY
	U.S. HIGHWAY
	STATE ROUTE
	COUNTY ROAD
	RAILROAD
	AIRPORT
	SCHOOL
	COURTHOUSE
	WATER
	ELEVATION
	BOUNDARY