



# Commonwealth of Kentucky

## County Election Planning Report

<b>County Name</b>	
POWELL	
<b>Election</b>	
2024 PRIMARY	
<b>Person Completing this Form</b>	
Name	Jackie Everman
Title	County Clerk
Phone	606-663-6444

For in-person voting on Election Day, the County Board of Elections will (check one):

- Consolidate precincts and precinct election officers (Requires Form SBE 74);
- Utilize the same plan that was used in a previous election (Requires current election dates on Form SBE 74); or
- Open all existing precincts.

Excused in-person absentee voting will occur (check one):

- Within the County Clerk's office; or
- In another location within the county (Requires Form SBE 74).

No-excuse in-person absentee voting will occur (check one):

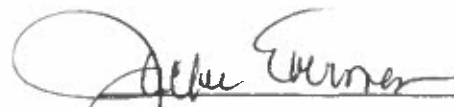
- Within the County Clerk's office; or
- In another location within the county (Requires Form SBE 74).

Absentee ballot drop-boxes will be located (minimum of one location required):

Powell County Courthouse, 525 Washington St., Stanton, KY

I have attached:

- All required Form SBE 74 sheets
- Relevant Maps
- Any desired supplemental narrative

 2/14/24  
Signature Date  
Please email to CountyElectionPlans@ky.gov

**POWELL COUNTY CLERK  
JACKIE EVERMAN  
P.O. BOX 548  
STANTON, KY 40380  
(606) 663-6444**

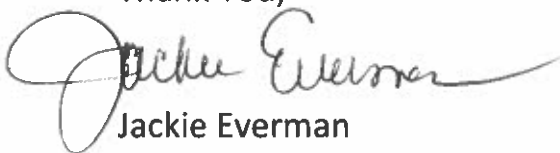
February 16, 2024

To Whom It May Concern:

Our election plans are exactly the same as they have been with the voting centers. We are utilizing 3 main schools and a church in the county since their locations are spread throughout the county. They all provide plenty of parking along with being able to accommodate large crowds. They are all handicap accessible as well.

Our drop box will be located at the Powell County Courthouse, which is the same location we have had since 2020. Excused early voting will be at the Powell County Clerk's office and No-excuse early voting will be held at our Powell County Extension Office, which has worked well each time we have used it.

Thank You,

A handwritten signature in black ink that reads "Jackie Everman". The signature is written in a cursive style with a large, looping initial "J".

Jackie Everman  
Powell County Clerk









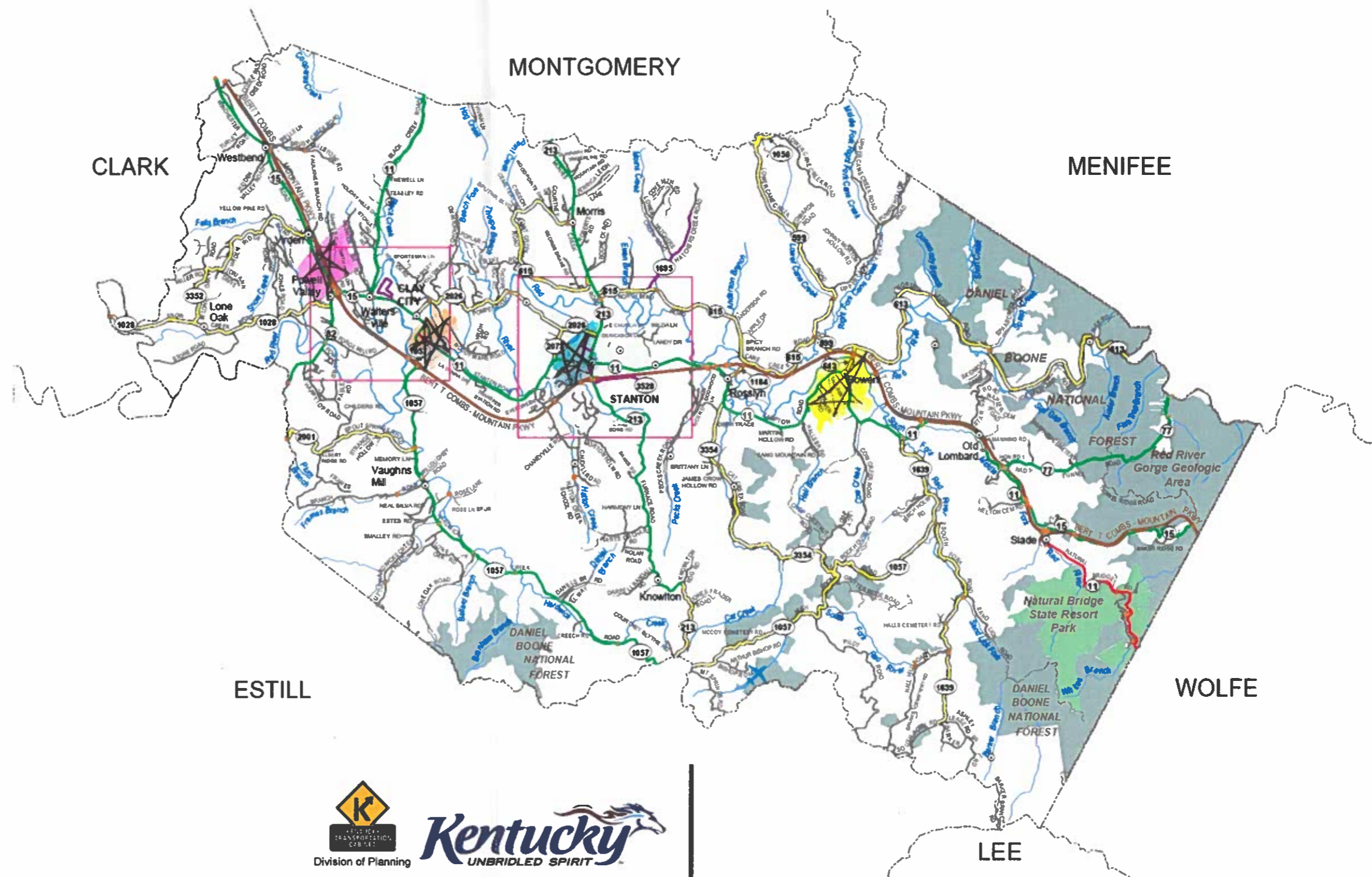






**State Primary Road System**

- Interstate
- Parkway
- Other State Primary
- State Secondary
- Rural Secondary
- Supplemental Road
- Unimproved
- Paved or Concrete
- Bridge
- Railroad
- Stream
- City/Town
- Airport
- Incorporated Area
- Lake
- State Park
- National Park or Recreation Area
- Defense Facility
- Wildlife Area
- Geological Area
- State, National, or Private Forest



The Kentucky Transportation Cabinet does not warrant that the information contained on this map is accurate or complete. The Kentucky Transportation Cabinet states that all attempts are made to insure the correctness of road network portrayal and it is based on the best available information at a given time but disclaims any and all representations and/or warranties made with respect to this map by any contributing source as to its contents, whether expressed, implied, or statutory, including, but not limited to, warranties of title, merchantability, and fitness for a particular purpose.



**Kentucky**  
UNBRIDLED SPIRIT

Division of Planning

**State Primary Road System  
POWELL COUNTY**

2 1 0 2 4 6 Miles

Last map revision: JUNE 2022

Road centerlines collected using GPS technology  
Kentucky State Plane Coordinate System (NAD83)

[www.planning.kytc.ky.gov](http://www.planning.kytc.ky.gov)

Bowen Elements  
 Powell Co. High  
 Clay City 1st Church of God  
 Clay City Elements