

**November 3, 2020 General Election In-person Voting Location Plan**

County: Lincoln Total Pages in Plan: 5

\*\*\* Please fill out this page and the accompanying form (feel free to make copies if necessary). If you feel any attachments (maps, photos, etc.) will be useful in showcasing your plan, please attach those as well. \*\*\*

Is This an Amendment to an Existing Plan? Y/N

If Yes, Please Explain Amendment: \_\_\_\_\_  
\_\_\_\_\_

**Narrative Explanation of County Plan:**

We have gotten together with our CBE & decided to enlist the help of our Magistrates as well. For the 2020 General Election, we would like to have a total of 4 County wide Polling Locations, with 2 Scanners & ePolling books at each. We feel that our community will greatly benefit from this flexibility in locations. We've been in contact with H.A.R.P., and have concluded that we will be able to have enough of each ballot face @ each location to meet our needs.

**RETURN ALL DOCUMENTS TO SBE BY FAX: 502-573-4369 or 502-696-1952  
OR BY EMAIL: [KAREN.SELLERS@KY.GOV](mailto:KAREN.SELLERS@KY.GOV) BEFORE SEPTEMBER 30, 2020.**

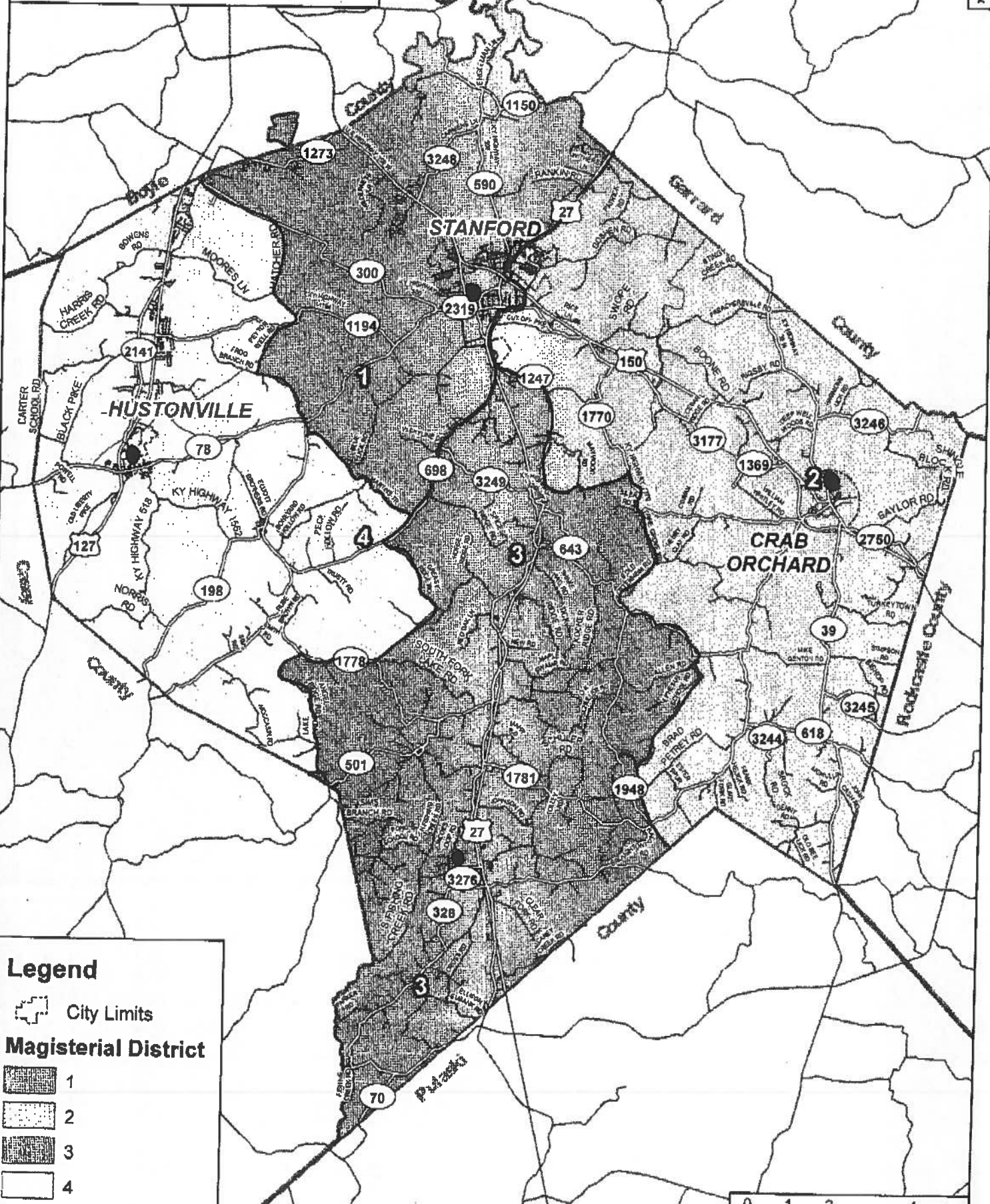
**\* Office Use Only \***

Seen and Approved By: SBE \_\_\_\_\_ SOS \_\_\_\_\_ GOV \_\_\_\_\_



**BG** Lincoln County, KY  
 Bluegrass Area  
 Development  
 District

Magisterial Districts



**Legend**

City Limits

**Magisterial District**

- 1
- 2
- 3
- 4



