

November 3, 2020 General Election In-person Voting Location Plan

County: Oldham Total Pages in Plan: 6

*** Please fill out this page and the accompanying form (feel free to make copies if necessary). If you feel any attachments (maps, photos, etc.) will be useful in showcasing your plan, please attach those as well. ***

Is This an Amendment to an Existing Plan? Y/N

If Yes, Please Explain Amendment: _____

Narrative Explanation of County Plan:

4. Super Centers in 4 schools in Oldham County. Early voting in main office in La Grange beginning Oct. 13-Nov 2. (including! Sat-Oct. 31). Early voting on North side of the County beginning Oct 13-Oct 17. Early voting on South side of Oldham Co Oct 19-24.
* See attachment for specific times *
and locations

4 - Voting Super Centers on Election Day *see attached

Processing Center - * See Attached.

RETURN ALL DOCUMENTS TO SBE BY FAX: 502-573-4369 or 502-696-1952
OR BY EMAIL: KAREN.SELLERS@KY.GOV BEFORE SEPTEMBER 30, 2020.

* Office Use Only *

Seen and Approved By: SBE _____ SOS _____ GOV _____

2020 General Election Early Voting Locations

** These locations do not need to be approved, though the emergency regulation states that SBE and SOS will help counties publicize early voting locations. Completing this form makes that possible.

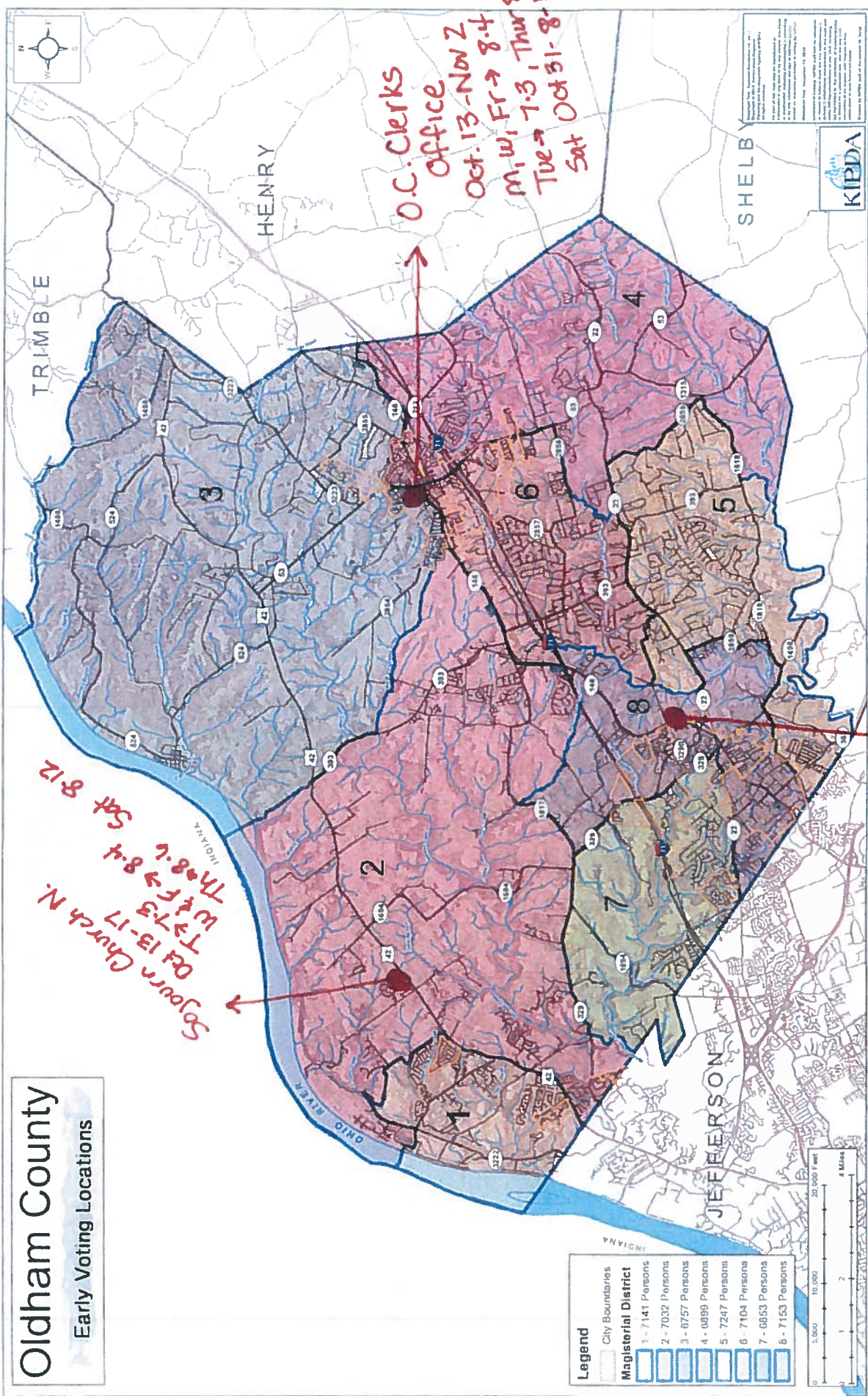
Name of Location	Address of Location	Dates/Times Available

See Attached

Facility Name/Type <small>*Please Note Which Facility Will Serve as County-wide Voting Center*</small>	Address	Type & Number of Voting Machines	Number of poll workers needed to staff
		5 - 2 scans per	20 per
		Voting center	Center
See attached	See attached		

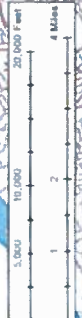
Oldham County

Early Voting Locations



Legend

- City Boundaries
- Magisterial District
- 1 - 7141 Persons
- 2 - 7032 Persons
- 3 - 6757 Persons
- 4 - 6899 Persons
- 5 - 7247 Persons
- 6 - 7104 Persons
- 7 - 6853 Persons
- 8 - 7153 Persons

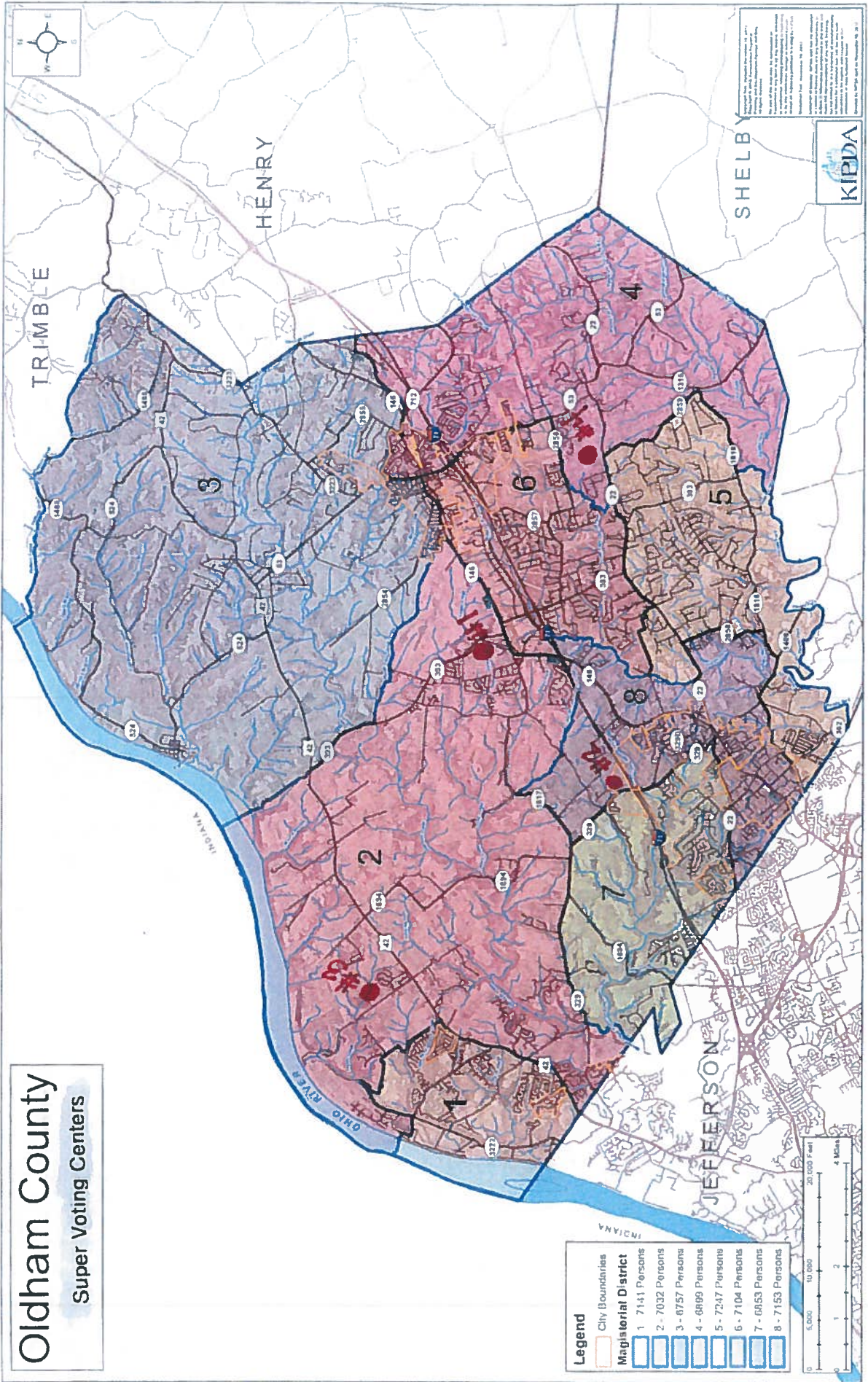


Sojourn Church N.
 Oct 13-17
 Wed-Fri → 8-4
 Thu-Sat → 8-12

O.C. Clerks
 Office
 Oct. 13 - Nov 2
 M, W, Fr → 8-4
 Tue → 7-3, Thur 8-6
 Sat Oct 31 - 8-12

Oct. 19-24 SOGC
 M, Th, Fr → 8-4
 Tue 8-6
 Wed → 7-3
 Sat → 8-12

- #1 → Oldham Co. High School
- #2 → S. Oldham Middle School
- #3 → N. Oldham High School
- #4 → E. Oldham Middle



2020 GENERAL ELECTION
VOTING GUIDE/PLAN FOR OLDHAM COUNTY

IN PERSON EARLY VOTING

October 13-17, 2020 Sojourn Church North 12001 W. Hwy 42 Goshen, KY 40026 (Tue 7-3, Wed and Fri 8-4, Thurs 8-6 and Saturday 8-12)

October 19-24, 2020 South Oldham Government Center 6710 W. Hwy 146 Crestwood, KY 40014 (Mon, Thurs and Fri 8-4, Tues 8-6, Wed 7-3 and Sat 8-12)

October 13-November 2, 2020 Oldham County Clerk's Office 100 W. Jefferson St. LaGrange, KY 40031 (Mon, Wed and Fri 8-4 Tue 7-3, Thurs 8-6) **Saturday, Oct 31, 2020 8-12)**

IN PERSON VOTING ON ELECTION DAY SUPER VOTING CENTER (approximately 20 Workers at each Center)

- Oldham County High School 1150 N. Hwy 393 LaGrange, KY 40031
- South Oldham Middle School 6403 W. Hwy 146 Crestwood, KY 40014
- North Oldham High School 1815 S. Hwy 1793 Goshen, KY 40026
- East Oldham Middle School 1201 E. Hwy 22 Crestwood, KY 40014

REQUIREMENTS FOR REQUESTING A MAIL IN BALLOT

The phrase "not able to appear at the polls on election day on account of age, disability or illness," as enacted at KRS 117.085(1)(a)(8) shall be interpreted to mean "of an age, or possessing of a health condition or vulnerability, or potentially in contact with a person of an age, or possessing a health condition or vulnerability, that the voter believes subjects the voter, or other person, to an unacceptable risk of harm from contracting or transmitting the novel coronavirus."

➤ **If you fall into this category, you may request a ballot at www.govoteky.com**

You can return via USPS or drop in a secured drop box at each Oldham County Clerk's Office during business hours.

MAIL IN PROCESSING CENTER

Will be located at 108 W. Jefferson St. LaGrange, KY We will begin approximately 9:00 a.m. daily and will leave upon completion of work. Observers are welcome during all hours of processing ballots going out, receiving them back in and counting.