



Commonwealth of Kentucky

County Election Planning Report

County Name	
BOURBON	
Election	
GENERAL 2024	
Person Completing this Form	
Name	CYNTHIA SANTANA WILSON
Title	COUNTY CLERK
Phone	859-987-2142

For in-person voting on Election Day, the County Board of Elections will (check one):

- Consolidate precincts and precinct election officers (Requires Form SBE 74);
- Utilize the same consolidation plan that was used in a previous election (Requires previous Form SBE 74); or
- Open all existing precincts.

Excused in-person absentee voting will occur (check one):

- Within the County Clerk's office; or
- In another location within the county (Requires Form SBE 74).

No-excuse in-person absentee voting will occur (check one):

- Within the County Clerk's office; or
- In another location within the county (Requires Form SBE 74).

Absentee ballot drop-boxes will be located (minimum of one location required):

County Clerks offices - Motor Vehicle office and Land Records Office

I have attached:

- All required Form SBE 74 sheets
- Relevant Maps
- Supplemental Narrative

Cynthia S. Wilson
Signature

Date

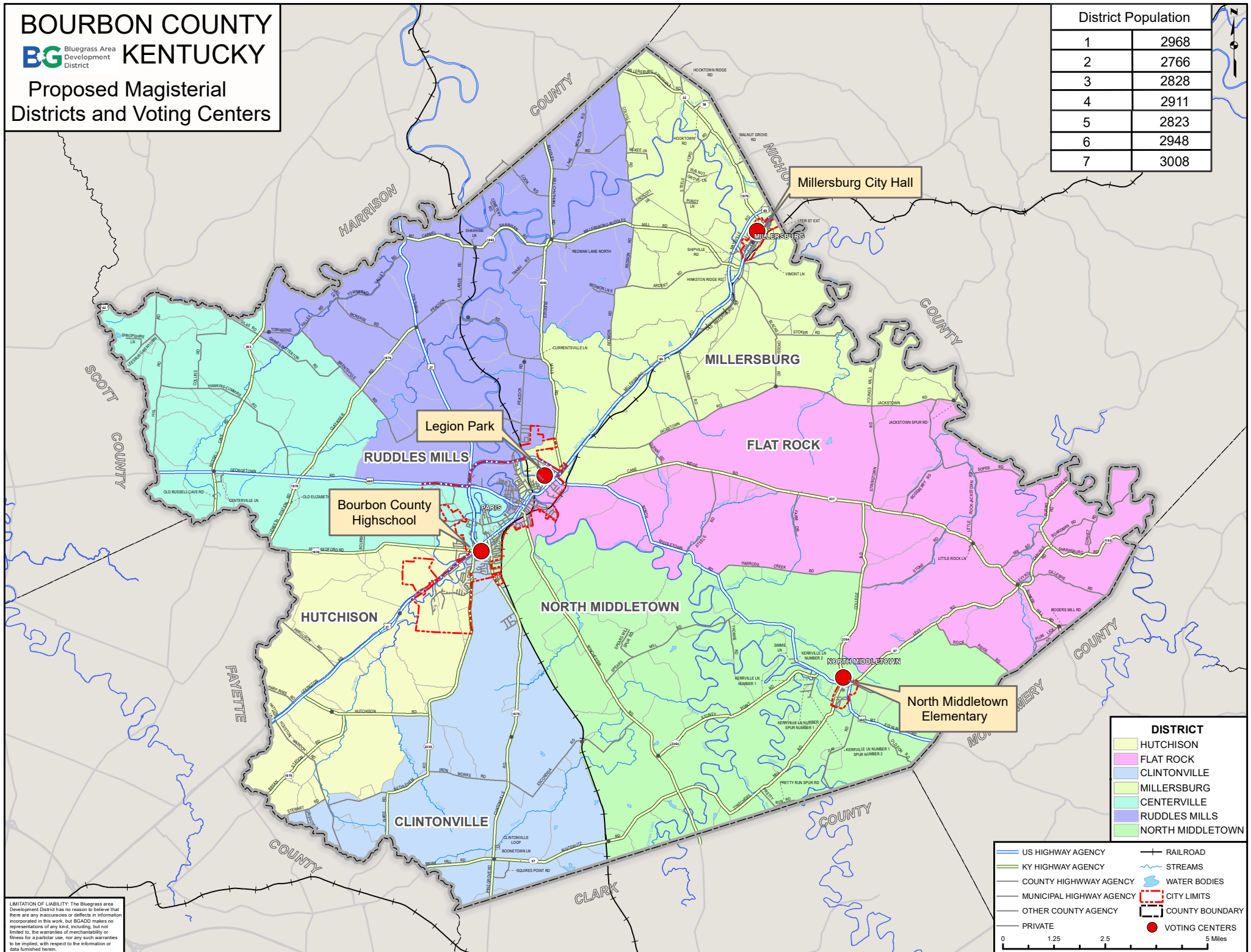
7/9/24

BOURBON COUNTY KENTUCKY

Bluegrass Area Development District

Proposed Magisterial Districts and Voting Centers

District Population	
1	2968
2	2766
3	2828
4	2911
5	2823
6	2948
7	3008



DISTRICT

- HUTCHISON
- FLAT ROCK
- CLINTONVILLE
- MILLERSBURG
- CENTERVILLE
- RUDDLES MILLS
- NORTH MIDDLETOWN

- US HIGHWAY AGENCY
- KY HIGHWAY AGENCY
- COUNTY HIGHWAY AGENCY
- MUNICIPAL HIGHWAY AGENCY
- OTHER COUNTY AGENCY
- PRIVATE
- RAILROAD
- STREAMS
- WATER BODIES
- CITY LIMITS
- COUNTY BOUNDARY
- VOTING CENTERS

0 1.25 2.5 5 Miles

LIMITATION OF LIABILITY: The Bluegrass area Development District has no reason to believe that there are any inaccuracies or defects in information incorporated in this work, but BGADD makes no representations of any kind, including, but not limited to, the warranties of merchantability or fitness for a particular use, nor any such warranties to be implied, with respect to the information or data furnished herein.