



# Commonwealth of Kentucky

## County Election Planning Report

<b>County Name</b>	
BUTLER	
<b>Election</b>	
2024 GENERAL ELECTION November 5, 2024	
<b>Person Completing this Form</b>	
Name	Sherry Johnson
Title	Butler County Clerk
Phone	270-526-5676

For in-person voting on Election Day, the County Board of Elections will (check one):

- Consolidate precincts and precinct election officers (Requires Form SBE 74);
- Utilize the same consolidation plan that was used in a previous election (Requires previous Form SBE 74); or
- Open all existing precincts.

Excused in-person absentee voting will occur (check one):

- Within the County Clerk's office; or
- In another location within the county (Requires Form SBE 74).

No-excuse in-person absentee voting will occur (check one):

- Within the County Clerk's office; or
- In another location within the county (Requires Form SBE 74).

Absentee ballot drop-boxes will be located (minimum of one location required):

Butler County Courthouse Lobby

I have attached:

- All required Form SBE 74 sheets
- Relevant Maps
- Supplemental Narrative

*Sherry Johnson* 7/9/2024  
 Signature Date



# Commonwealth of Kentucky

## Petition to Consolidate Precincts and Precinct Election Officers

<b>County Name</b>	
BUTLER COUNTY	
<b>Election</b>	<b>Dates of Voting</b>
2024 GENERAL ELECTION Oct 31, Nov 1 & 2, 2024	
<b>Person Completing this Form</b>	
Name	SHERRY JOHNSON
Title	BUTLER COUNTY CLERK
<b>About Voting Location</b>	
<i>Example: Tulip Poplar High, 123 Main Street, County High School</i>	
Name	EARLY VOTING
Address	110 N Main St Morgantown, KY 42261
Type	EARLY VOTING
Number of Parking Spaces	Sufficient Parking Spaces?
25-30	Yes
<b>Voting Equipment to be Used</b>	
Number	Type of equipment
2	Verity Scans
1	Verity Print
1	Verity ADA/DUO

Precincts in Voting Location	
Precinct name	Number of registered voters
A101	1457
B102	2049
C103	2020
D104	1775
E105	1895
ALL PRECINCTS	9196

<b>Narrative Plan</b> <i>(please attach additional sheets if needed)</i>
<b>1.) Why is this consolidation of these precincts desirable?</b> <input checked="" type="checkbox"/> This is the same plan used in the last election  This is for EARLY VOTING so every eligible registered voter in Butler County has the option to Vote EARLY with no excuse needed.
<b>2.) In what manner will Precinct Officers be assigned?</b> <input checked="" type="checkbox"/> This location will be fully staffed with election officials  The Precinct Officers will be selected from our pool of Election Officers.
<b>3.) How will the voting location be publicized to voters? How will the location be noted as a "Vote Center?"</b>  The Banner(newspaper), BeechTree News(online newspaper), Our Website and FaceBook Page
<b>4.) How will the voting location serve as a focal point to meet the needs of a diverse community?</b>  EARLY VOTING allows every eligible registered voter to have the option to vote early with no excuse.



# Commonwealth of Kentucky

## Petition to Consolidate Precincts and Precinct Election Officers

<b>County Name</b>	
BUTLER COUNTY	
<b>Election</b>	<b>Dates of Voting</b>
2024 GENERAL ELECTION November 5, 2024	
<b>Person Completing this Form</b>	
Name	SHERRY JOHNSON
Title	BUTLER COUNTY CLERK
<b>About Voting Location</b>	
<i>Example: Tulip Poplar High, 123 Main Street, County High School</i>	
Name	MES VOTE CENTER
Address	210 Cemetery St Morgantown, KY 42261
Type	VOTE CENTER
Number of Parking Spaces	Sufficient Parking Spaces?
50+	Yes
<b>Voting Equipment to be Used</b>	
<b>Number</b>	<b>Type of equipment</b>
2	Verity Scans
2	Verity Print
1	Verity ADA/DUO

Precincts in Voting Location	
Precinct name	Number of registered voters
A101	1457
B102	2049
C103	2020
D104	1775
E105	1895
ALL PRECINCTS	9196

<b>Narrative Plan</b> <i>(please attach additional sheets if needed)</i>
<b>1.) Why is this consolidation of these precincts desirable?</b> <input checked="" type="checkbox"/> This is the same plan used in the last election This is for a Vote Center so every eligible registered voter in Butler County has the option to Vote at a Central Location in Morgantown.
<b>2.) In what manner will Precinct Officers be assigned?</b> <input checked="" type="checkbox"/> This location will be fully staffed with election officials The Precinct Officers will be selected from our pool of Election Officers.
<b>3.) How will the voting location be publicized to voters? How will the location be noted as a "Vote Center?"</b> The Banner(newspaper), BeechTree News(online newspaper), Our Website and FaceBook Page
<b>4.) How will the voting location serve as a focal point to meet the needs of a diverse community?</b> This is for a Vote Center so every eligible registered voter in Butler County has the option to Vote at a Central Location in Morgantown.



# Commonwealth of Kentucky

## Petition to Consolidate Precincts and Precinct Election Officers

<b>County Name</b>	
BUTLER COUNTY	
<b>Election</b>	<b>Dates of Voting</b>
2024 GENERAL ELECTION November 5, 2024	
<b>Person Completing this Form</b>	
Name	SHERRY JOHNSON
Title	BUTLER COUNTY CLERK
<b>About Voting Location</b>	
<i>Example: Tulip Poplar High, 123 Main Street, County High School</i>	
Name	DRIVE THRU VOTE CENTER
Address	642 Boat Factory Rd Morgantown, KY 42261
Type	VOTE CENTER
Number of Parking Spaces	Sufficient Parking Spaces?
NO PARKING	N/A
<b>Voting Equipment to be Used</b>	
<b>Number</b>	<b>Type of equipment</b>
2	Verity Scans
2	Verity Print

Precincts in Voting Location	
Precinct name	Number of registered voters
A101	1457
B102	2049
C103	2020
D104	1775
E105	1895
ALL PRECINCTS	9196

<b>Narrative Plan</b> <i>(please attach additional sheets if needed)</i>
<b>1.) Why is this consolidation of these precincts desirable?</b> <input checked="" type="checkbox"/> This is the same plan used in the last election  This is for a Drive Thru Vote Center so every eligible registered voter in Butler County has the option to Vote at a Central Location in Morgantown.
<b>2.) In what manner will Precinct Officers be assigned?</b> <input checked="" type="checkbox"/> This location will be fully staffed with election officials  The Precinct Officers will be selected from our pool of Election Officers.
<b>3.) How will the voting location be publicized to voters? How will the location be noted as a "Vote Center?"</b>  The Banner(newspaper), BeechTree News(online newspaper), Our Website and FaceBook Page
<b>4.) How will the voting location serve as a focal point to meet the needs of a diverse community?</b>  This is for a Drive Thru Vote Center so every eligible registered voter in Butler County has the option to Vote at a Central Location in Morgantown.



# Commonwealth of Kentucky

## Petition to Consolidate Precincts and Precinct Election Officers

<b>County Name</b>	
BUTLER COUNTY	
<b>Election</b>	<b>Dates of Voting</b>
2024 GENERAL ELECTION	November 5, 2024
<b>Person Completing this Form</b>	
Name	SHERRY JOHNSON
Title	BUTLER COUNTY CLERK
<b>About Voting Location</b>	
<i>Example: Tulip Poplar High, 123 Main Street, County High School</i>	
Name	2nd DISTRICT
Address	101 Caney Fork Rd Lewisburg, KY 42256
Type	2nd DISTRICT Precinct
Number of Parking Spaces	Sufficient Parking Spaces?
20+	Yes
<b>Voting Equipment to be Used</b>	
<b>Number</b>	<b>Type of equipment</b>
2	Verity Scans
1	Verity Print
1	Verity ADA-DUO

Precincts in Voting Location	
Precinct name	Number of registered voters
B102	2049

<b>Narrative Plan</b> <i>(please attach additional sheets if needed)</i>
<b>1.) Why is this consolidation of these precincts desirable?</b>
<input checked="" type="checkbox"/> This is the same plan used in the last election
This is for a regular precinct in rural Butler County. For 2nd District Voters Only.
<b>2.) In what manner will Precinct Officers be assigned?</b>
<input checked="" type="checkbox"/> This location will be fully staffed with election officials
The Precinct Officers will be selected from our pool of Election Officers.
<b>3.) How will the voting location be publicized to voters? How will the location be noted as a "Vote Center?"</b>
The Banner(newspaper), BeechTree News(online newspaper), Our Website and FaceBook Page
<b>4.) How will the voting location serve as a focal point to meet the needs of a diverse community?</b>
This is for a regular precinct in rural Butler County. For 2nd District Voters Only.









# Commonwealth of Kentucky

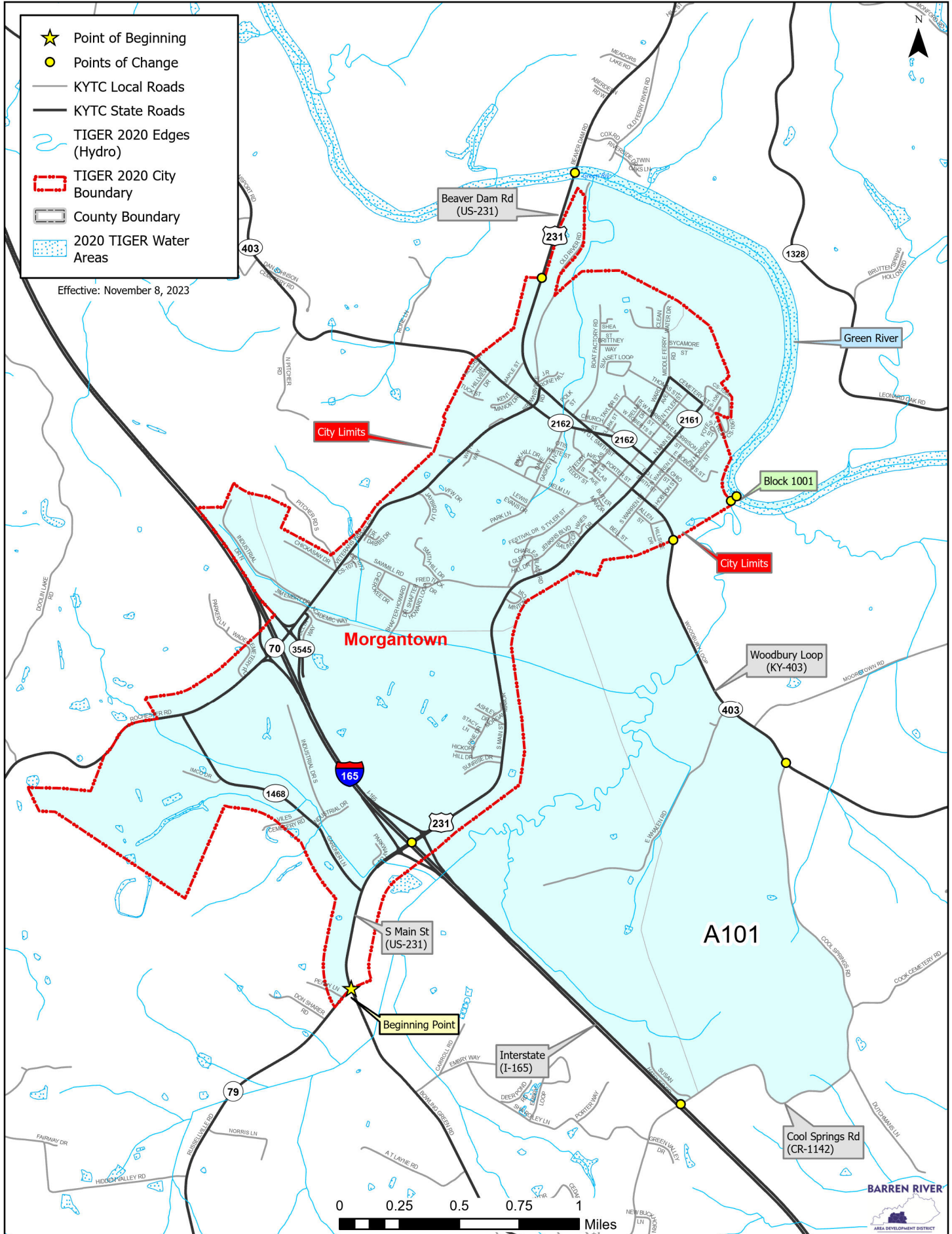
## Petition to Consolidate Precincts and Precinct Election Officers

<b>County Name</b>	
BUTLER COUNTY	
<b>Election</b>	<b>Dates of Voting</b>
2024 GENERAL ELECTION	November 5, 2024
<b>Person Completing this Form</b>	
Name	SHERRY JOHNSON
Title	BUTLER COUNTY CLERK
<b>About Voting Location</b>	
<i>Example: Tulip Poplar High, 123 Main Street, County High School</i>	
Name	5th DISTRICT
Address	6810 Caneyville Rd Morgantown, KY 42261
Type	5th DISTRICT Precinct
Number of Parking Spaces	Sufficient Parking Spaces?
20+	Yes
<b>Voting Equipment to be Used</b>	
Number	Type of equipment
2	Verity Scans
1	Verity Print
1	Verity ADA-DUO

Precincts in Voting Location	
Precinct name	Number of registered voters
E105	1895

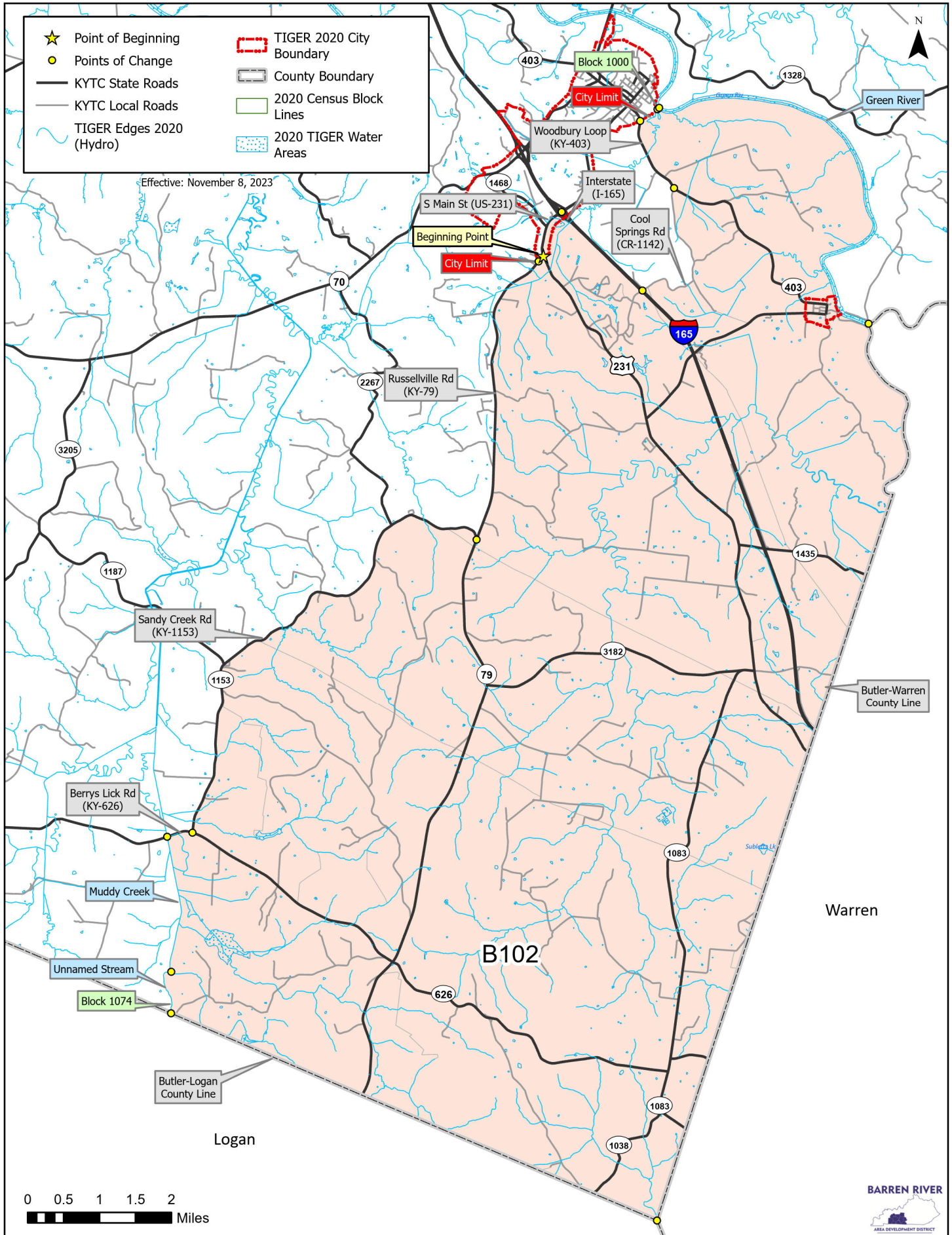
<b>Narrative Plan</b> <i>(please attach additional sheets if needed)</i>
<b>1.) Why is this consolidation of these precincts desirable?</b> <input checked="" type="checkbox"/> This is the same plan used in the last election This is for a regular precinct in rural Butler County. For 5th District Voters Only.
<b>2.) In what manner will Precinct Officers be assigned?</b> <input checked="" type="checkbox"/> This location will be fully staffed with election officials The Precinct Officers will be selected from our pool of Election Officers.
<b>3.) How will the voting location be publicized to voters? How will the location be noted as a "Vote Center?"</b> The Banner(newspaper), BeechTree News(online newspaper), Our Website and FaceBook Page
<b>4.) How will the voting location serve as a focal point to meet the needs of a diverse community?</b> This is for a regular precinct in rural Butler County. For 5th District Voters Only.





# Precinct B102: 2nd District

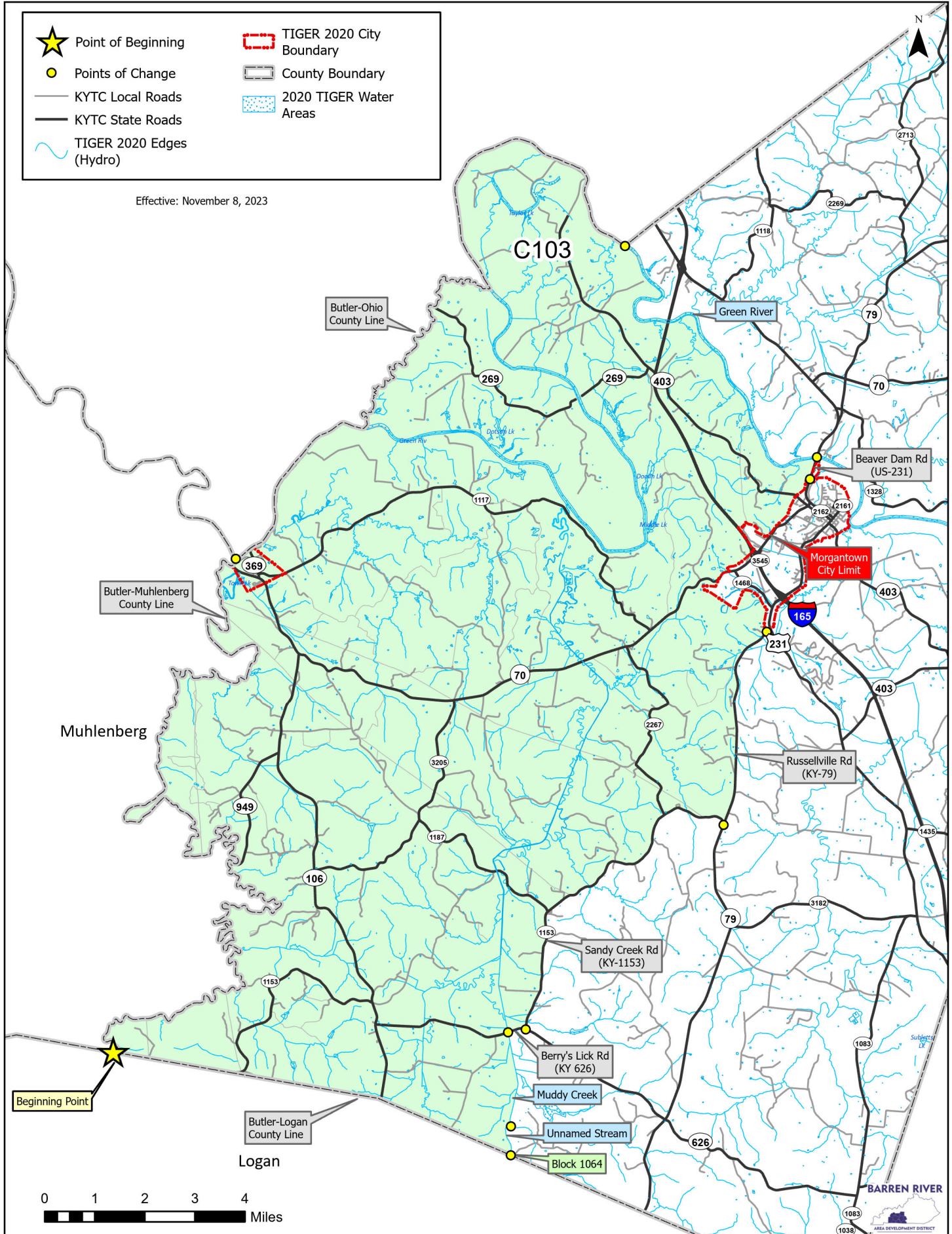
# Butler County, KY





# Precinct C103: 3rd District

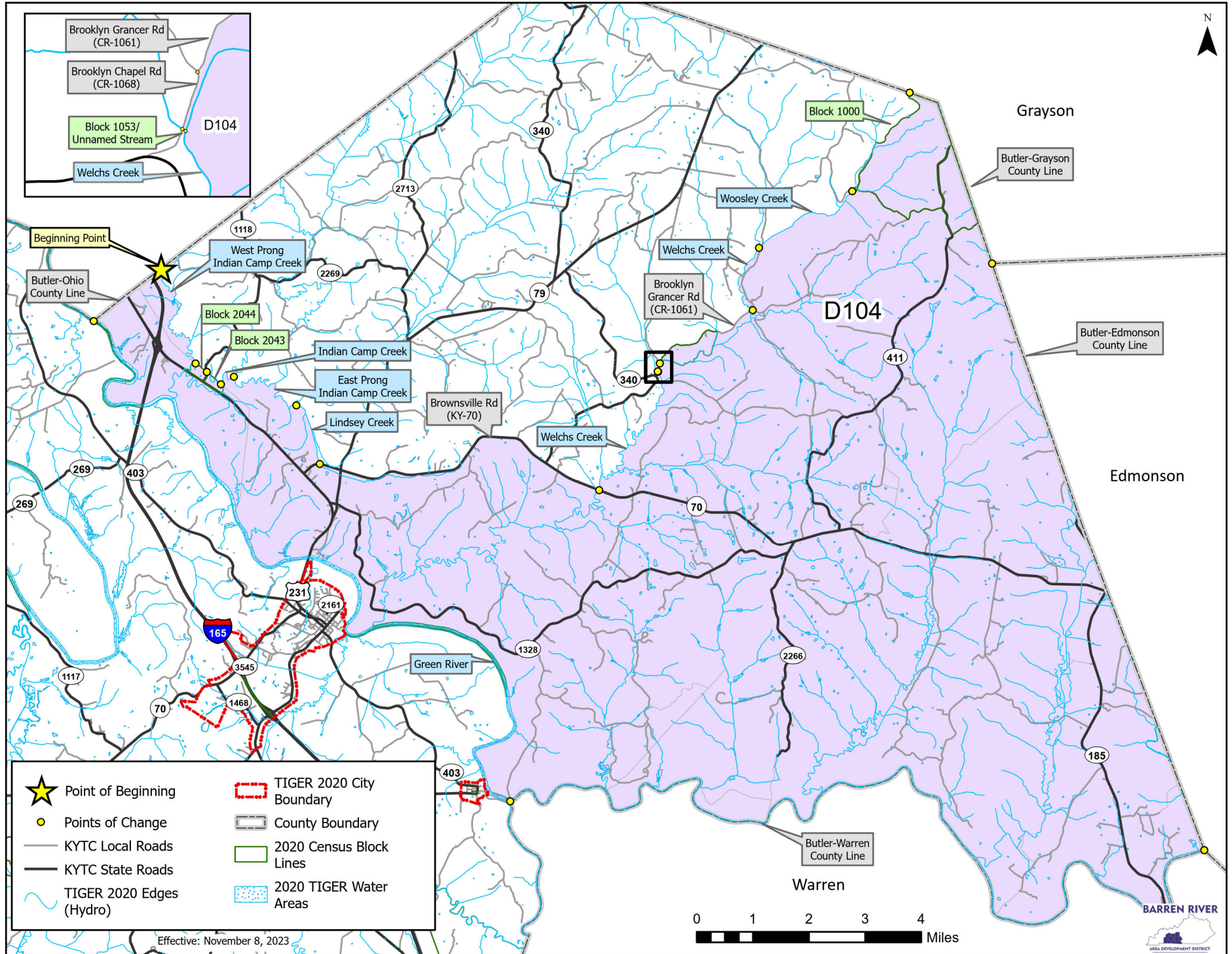
# Butler County, KY














Precinct D104: 4th District

Butler County, KY



	Point of Beginning		County Boundary
	Points of Change		TIGER 2020 City Boundary
	KYTC Local Roads		2020 Census Block Lines
	KYTC State Roads		2020 TIGER Water Areas
	TIGER 2020 Edges (Hydro)		

Effective: November 8, 2023

Ohio

Grayson

Butler-Ohio County Line

Butler-Grayson County Line

Block 1001

Woosley Creek

Welchs Creek

Brooklyn Gracer Rd (CR-1061)

Beginning Point

West Prong Indian Camp Creek

Block 2015

Block 2028

Indian Camp Creek

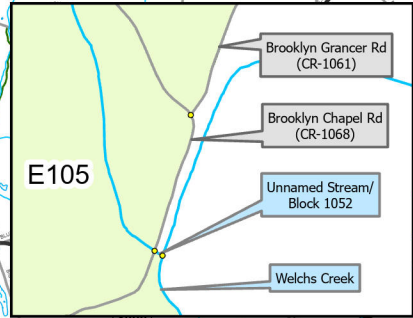
East Prong Indian Camp Creek

Lindsey Creek

E105

Brownsville Rd (KY-70)

Welchs Creek



E105

- Brooklyn Gracer Rd (CR-1061)
- Brooklyn Chapel Rd (CR-1068)
- Unnamed Stream/Block 1052
- Welchs Creek

