



# Commonwealth of Kentucky County Election Planning Report

<b>County Name</b>	
Carlisle	
<b>Election</b>	
November 5th, 2024 General	
<b>Person Completing this Form</b>	
Name	Becky Martin
Title	County Clerk
Phone	270.628.3233 Cell 270.339.4633

For in-person voting on Election Day, the County Board of Elections will (check one):

- Consolidate precincts and precinct election officers (Requires Form SBE 74);
- Utilize the same consolidation plan that was used in a previous election (Requires previous Form SBE 74); or
- Open all existing precincts.

Excused in-person absentee voting will occur (check one):

- Within the County Clerk's office; or
- In another location within the county (Requires Form SBE 74).

No-excuse in-person absentee voting will occur (check one):

- Within the County Clerk's office; or
- In another location within the county (Requires Form SBE 74).

Absentee ballot drop-boxes will be located (minimum of one location required):

Inside the Courthouse Foyer.

I have attached:

- All required Form SBE 74 sheets
- Relevant Maps
- Supplemental Narrative

Becky Martin 7/1/24  
Signature Date



# Commonwealth of Kentucky

## Petition to Consolidate Precincts and Precinct Election Officers

<b>County Name</b>	
Carlisle	
<b>Election</b>	<b>Dates of Voting</b>
General	11/5/24 (Nov 5 2024)
<b>Person Completing this Form</b>	
Name	Becky Martin
Title	Clerk
<b>About Voting Location</b>	
<i>Example: Tulip Poplar High, 123 Main Street, County High School</i>	
Name	Carlisle Co. Ext. Office
Address	65 John Roberts Dr. Bardwell
Type	Voting Center
Number of Parking Spaces	Sufficient Parking Spaces?
50	Yes + handicapped
<b>Voting Equipment to be Used</b>	
Number	Type of equipment
2	Scan
2	Handi

Precincts in Voting Location	
Precinct name	Number of registered voters
Voting Center	total voters Reg 3833

**Narrative Plan** (please attach additional sheets if needed)

1.) Why is this consolidation of these precincts desirable?  
 This is the same plan used in the last election

2.) In what manner will Precinct Officers be assigned?  
 This location will be fully staffed with election officials  
 We have had @ least 4 poll workers and if available we will use more. This coming election should be busy and if we can get workers we will utilize them

3.) How will the voting location be publicized to voters? How will the location be noted as a "Vote Center?"  
 We use the newspaper and Facebook and word of mouth. The last several elections have been voting centers. We post fl

4.) How will the voting location serve as a focal point to meet the needs of a diverse community?  
 Our voting centers are conveniently distributed through our community. Our centers are well known spots in each of the areas.





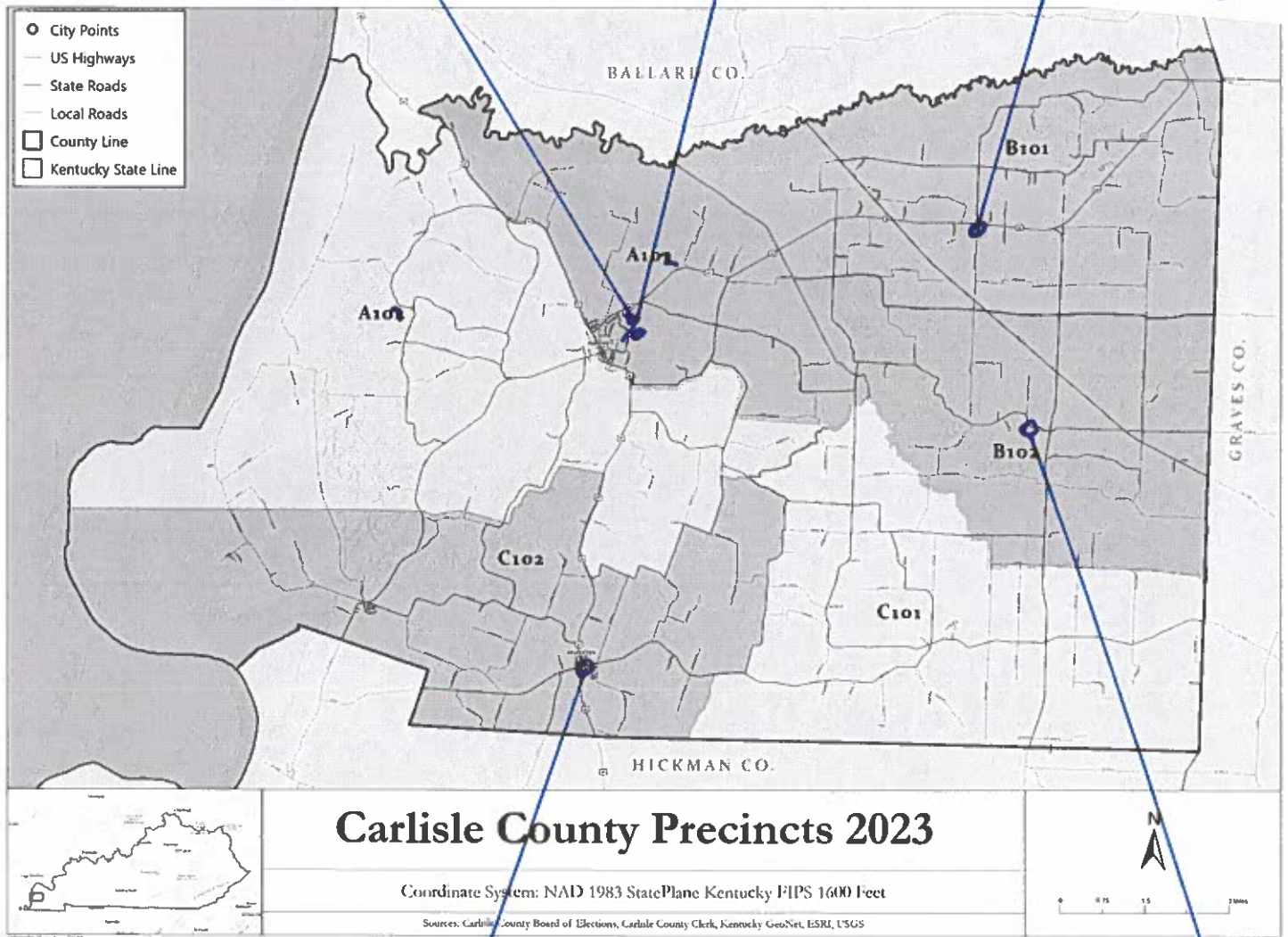




CARLISLE COUNTY COURTHOUSE  
985 US HWY 62  
BARDWELL, KY 42023  
ALL EARLY VOTING

CARLISLE COUNTY EXTENSION OFFICE  
65 JOHN ROBERTS DRIVE  
BARDWELL, KY 42023

CUNNINGHAM FIRE DEPARTMENT  
HWY 62 EAST  
CUNNINGHAM, KY 42035



ARLINGTON CITY HALL  
37 HWY 80  
ARLINGTON, KY 42021

SAINT CHARLES PARISH HALL  
6922 ST RT 408  
BARDWELL, KY 42023

ALL ARE VOTING CENTERS