



# Commonwealth of Kentucky

## County Election Planning Report

<b>County Name</b>	
Lee County	
<b>Election</b>	
General	
<b>Person Completing this Form</b>	
Name	Kimberly A Noe
Title	County Clerk
Phone	606-464-4115

For in-person voting on Election Day, the County Board of Elections will (check one):

- Consolidate precincts and precinct election officers (Requires Form SBE 74);
- Utilize the same consolidation plan that was used in a previous election (Requires previous Form SBE 74); or
- Open all existing precincts.

Excused in-person absentee voting will occur (check one):

- Within the County Clerk's office; or
- In another location within the county (Requires Form SBE 74).

No-excuse in-person absentee voting will occur (check one):

- Within the County Clerk's office; or
- In another location within the county (Requires Form SBE 74).

Absentee ballot drop-boxes will be located (minimum of one location required):

Outside of Clerk's office

I have attached:

- All required Form SBE 74 sheets
- Relevant Maps
- Supplemental Narrative

Kimberly A Noe 7/9/24  
Signature Date



# Commonwealth of Kentucky

## Petition to Consolidate Precincts and Precinct Election Officers

<b>County Name</b>	
Lee County	
<b>Election</b>	<b>Dates of Voting</b>
General	November 5, 2024
<b>Person Completing this Form</b>	
Name	Kimberly A Noe
Title	County Clerk
<b>About Voting Location</b>	
<i>Example: Tulip Poplar High, 123 Main Street, County High School</i>	
Name	Lee County Courthouse
Address	256 Main Street
Type	Clerk's Office
Number of Parking Spaces	Sufficient Parking Spaces?
<b>Voting Equipment to be Used</b>	
<b>Number</b>	<b>Type of equipment</b>
1	DS 200
1	Express Vote
1	E Poll Book

Precincts in Voting Location	
Precinct name	Number of registered voters
Excused	Early
Voting	
10/23-10/25	10/28-10/30

**Narrative Plan** (please attach additional sheets if needed)

1.) Why is this consolidation of these precincts desirable?  
 This is the same plan used in the last election

2.) In what manner will Precinct Officers be assigned?  
 This location will be fully staffed with election officials  
 I will have Clerk's Office Staff to work the machines.

3.) How will the voting location be publicized to voters? How will the location be noted as a "Vote Center?"  
 Local Newspaper, local radio and television Station

4.) How will the voting location serve as a focal point to meet the needs of a diverse community?  
 Provide a location for early excused Voters to vote



# Commonwealth of Kentucky

## Petition to Consolidate Precincts and Precinct Election Officers

<b>County Name</b>	
Lee	
<b>Place</b>	<b>Dates of Voting</b>
11/5/24	General
<b>Person Completing this Form</b>	
<b>Name</b>	Kimberly A Noe
<b>Title</b>	County Clerk
<b>About Voting Location</b>	
<i>Example: Tulip Poplar High, 123 Main Street, County High School</i>	
<b>Name</b>	Lee County Courthouse
<b>Address</b>	256 Main Street
<b>Type</b>	Basement
<b>Number of Parking Spaces</b>	<b>Sufficient Parking Spaces?</b>
75	Yes
<b>Voting Equipment to be Used</b>	
<b>Number</b>	<b>Type of equipment</b>
2	DS 200
3	Express Votes
2	EPoll Books

Precincts in Voting Location	
Precinct name	Number of registered voters
Early Voting	
Absentee	
10131, 1111, 1112	

**Narrative Plan** (please attach additional sheets if needed)

1.) Why is this consolidation of these precincts desirable?  
 This is the same plan used in the last election  
 Early and Absentee voting

2.) In what manner will Precinct Officers be assigned?  
 This location will be fully staffed with election officials  
 I will have a republican and democrat precinct workers plus staff member

3.) How will the voting location be publicized to voters? How will the location be noted as a "Vote Center?"  
 Local newspaper, Local radio and television stations

4.) How will the voting location serve as a focal point to meet the needs of a diverse community?  
 Provide room for Machines for all who wish to vote early





# Commonwealth of Kentucky

## Petition to Consolidate Precincts and Precinct Election Officers

<b>County Name</b>	
Lee	
<b>Election</b>	<b>Dates of Voting</b>
General	November 5, 2024
<b>Person Completing this Form</b>	
Name	Kimberly Noe
Title	County Clerk
<b>About Voting Location</b>	
<i>Example: Tulip Poplar High, 123 Main Street, County High School</i>	
Name	St Helens Votinghouse
Address	500 Highway 2016
Type	Voting Building
Number of Parking Spaces	Sufficient Parking Spaces?
30	Yes
<b>Voting Equipment to be Used</b>	
Number	Type of equipment
2	DS 200
3	Express Votes
2	EPoll Books

Precincts in Voting Location	
Precinct name	Number of registered voters
B101 St Helens	504
B102 Ivy Patch	465
Vote Center	4,955

**Narrative Plan** (please attach additional sheets if needed)

1.) Why is this consolidation of these precincts desirable?  
 This is the same plan used in the last election  
 Share equipment / machines  
 Precinct Officers

2.) In what manner will Precinct Officers be assigned?  
 This location will be fully staffed with election officials  
 4 election officers

3.) How will the voting location be publicized to voters? How will the location be noted as a "Vote Center?"  
 Local newspapers, local radio station and television station

4.) How will the voting location serve as a focal point to meet the needs of a diverse community?  
 Anyone from this area of the county or anyone fr



# Commonwealth of Kentucky

## Petition to Consolidate Precincts and Precinct Election Officers

<b>County Name</b>	
Lee	
<b>Election</b>	<b>Dates of Voting</b>
Primary	November 5, 2024
<b>Person Completing this Form</b>	
<b>Name</b>	Kimberly A. Voe
<b>Title</b>	County Clerk
<b>About Voting Location</b>	
<i>Example: Tulip Poplar High, 123 Main Street, County High School</i>	
<b>Name</b>	Beattyville/Lee Co Fire Station
<b>Address</b>	1275 Grand Avenue
<b>Type</b>	Fire Department
<b>Number of Parking Spaces</b>	<b>Sufficient Parking Spaces?</b>
<b>Voting Equipment to be Used</b>	
<b>Number</b>	<b>Type of equipment</b>
3	DS 200
4	Express Votes
2	EPoll Books

Precincts in Voting Location	
Precinct name	Number of registered voters
A101 Beattyville #1	362
A102 Beattyville #2	410
A103 Beattyville #3	558
Vote Center	4,955

**Narrative Plan** (please attach additional sheets if needed)

1.) Why is this consolidation of these precincts desirable?  
 This is the same plan used in the last election  
 share equipment / machines  
 precinct officers

2.) In what manner will Precinct Officers be assigned?  
 This location will be fully staffed with election officials  
 8 election officers

3.) How will the voting location be publicized to voters? How will the location be noted as a "Vote Center?"  
 Local Newspapers, local radio station and television station

4.) How will the voting location serve as a focal point to meet the needs of a diverse community?  
 Anyone From any precinct in Lee County will be able to vote at this location if they are in the city of Beattyville or coming thru town.



# Commonwealth of Kentucky

## Petition to Consolidate Precincts and Precinct Election Officers

<b>County Name</b>	
Lee	
<b>Election</b>	<b>Dates of Voting</b>
General	November 5, 2024
<b>Person Completing this Form</b>	
Name	Kimberly A Noe
Title	County Clerk
<b>About Voting Location</b>	
Example: Tulip Poplar High, 123 Main Street, County High School	
Name	Beartrack Fire Station
Address	864 Hwy 399
Type	Fire Station
Number of Parking Spaces	Sufficient Parking Spaces?
45	Yes
<b>Voting Equipment to be Used</b>	
Number	Type of equipment
2	DS200
3	Express Vote
3	EPoll Books

Precincts in Voting Location	
Precinct name	Number of registered voters
<sup>c101</sup> Beattyville #4	412
<sup>c103</sup> Sandfield	372
Vote Center	4,955

**Narrative Plan** (please attach additional sheets if needed)

1.) Why is this consolidation of these precincts desirable?  
 This is the same plan used in the last election  
 Share equipment / Large space to accommodate all voters.

2.) In what manner will Precinct Officers be assigned?  
 This location will be fully staffed with election officials  
 6 election officers

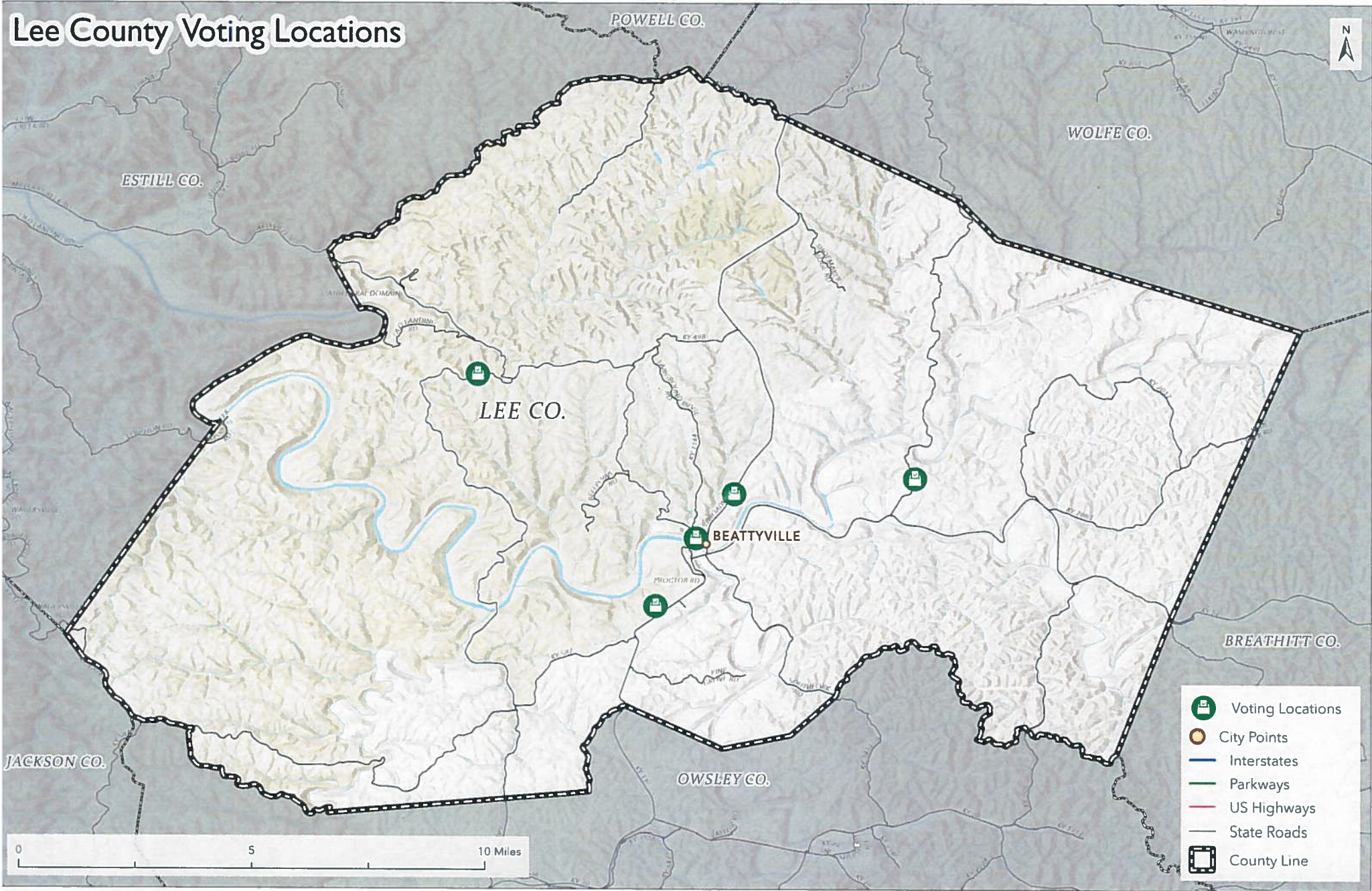
3.) How will the voting location be publicized to voters? How will the location be noted as a "Vote Center?"  
 Local newspaper, local radio and television station








4.) How will the voting location serve as a focal point to meet the needs of a diverse community?  
 Provide voting location for voters in the north end of the county





# Lee County Voting Locations



-  Voting Locations
-  City Points
-  Interstates
-  Parkways
-  US Highways
-  State Roads
-  County Line

0 5 10 Miles