



# Commonwealth of Kentucky

## County Election Planning Report

<b>County Name</b>	
MONTGOMERY	
<b>Election</b>	
2024 GENERAL	
<b>Person Completing this Form</b>	
Name	CHRIS COCKRELL
Title	COUNTY CLERK
Phone	859 498 8700

For in-person voting on Election Day, the County Board of Elections will (check one):

- Consolidate precincts and precinct election officers (Requires Form SBE 74);
- Utilize the same consolidation plan that was used in a previous election (Requires previous Form SBE 74); or
- Open all existing precincts.

Excused in-person absentee voting will occur (check one):

- Within the County Clerk's office; or
- In another location within the county (Requires Form SBE 74).

No-excuse in-person absentee voting will occur (check one):

- Within the County Clerk's office; or
- In another location within the county (Requires Form SBE 74).

Absentee ballot drop-boxes will be located (minimum of one location required):

COUNTY CLERKS OFFICE

---

I have attached:

- All required Form SBE 74 sheets
- Relevant Maps
- Supplemental Narrative

  
Signature

06/20/2024

Date



# Commonwealth of Kentucky

## Petition to Consolidate Precincts and Precinct Election Officers

<b>County Name</b>	
MONTGOMERY	
<b>Election</b>	<b>Dates of Voting</b>
2024 GENERAL (Walk-in 6 day)	
<b>Person Completing this Form</b>	
Name	CHRIS COCKRELL
Title	COUNTY CLERK
<b>About Voting Location</b>	
<i>Example: Tulip Poplar High, 123 Main Street, County High School</i>	
Name	Montgomery County Courthouse
Address	1 Court st. Suite
Type	Courthouse
Number of Parking Spaces	Sufficient Parking Spaces?
100	Yes
<b>Voting Equipment to be Used</b>	
<b>Number</b>	<b>Type of equipment</b>
1	VERITI PRINT
1	VERTI SCAN

<b>Precincts in Voting Location</b>	
Precinct name	Number of registered voters
ALL	20737

<b>Narrative Plan</b> <i>(please attach additional sheets if needed)</i>
<b>1.) Why is this consolidation of these precincts desirable?</b> <input checked="" type="checkbox"/> This is the same plan used in the last election
<b>2.) In what manner will Precinct Officers be assigned?</b> <input type="checkbox"/> This location will be fully staffed with election officials  By partisan staff of Clerks office, voted on by County Board of Elections
<b>3.) How will the voting location be publicized to voters? How will the location be noted as a "Vote Center?"</b>  Paper and website
<b>4.) How will the voting location serve as a focal point to meet the needs of a diverse community?</b>



# Commonwealth of Kentucky

## Petition to Consolidate Precincts and Precinct Election Officers

<b>County Name</b>	
MONTGOMERY	
<b>Election</b>	<b>Dates of Voting</b>
2024 GENERAL (3 DAY NO EXCUSE)	
<b>Person Completing this Form</b>	
Name	CHRIS COCKRELL
Title	COUNTY CLERK
<b>About Voting Location</b>	
<i>Example: Tulip Poplar High, 123 Main Street, County High School</i>	
Name	CLAY CENTER
Address	3400 INDIAN MOUND DR
Type	COMMUNITY CENTER
Number of Parking Spaces	Sufficient Parking Spaces?
257	YES
<b>Voting Equipment to be Used</b>	
<b>Number</b>	<b>Type of equipment</b>
6	VERITY PRINT
3	VERITY SCANNERS
1	VERITY ADA

<b>Precincts in Voting Location</b>	
Precinct name	Number of registered voters
ALL	20737

<b>Narrative Plan</b> <i>(please attach additional sheets if needed)</i>
<b>1.) Why is this consolidation of these precincts desirable?</b> <input checked="" type="checkbox"/> This is the same plan used in the last election
<b>2.) In what manner will Precinct Officers be assigned?</b> <input checked="" type="checkbox"/> This location will be fully staffed with election officials
<b>3.) How will the voting location be publicized to voters? How will the location be noted as a "Vote Center?"</b> Paper, social media, website
<b>4.) How will the voting location serve as a focal point to meet the needs of a diverse community?</b>



# Commonwealth of Kentucky

## Petition to Consolidate Precincts and Precinct Election Officers

<b>County Name</b>	
MONTGOMERY	
<b>Election</b>	<b>Dates of Voting</b>
2024 GENERAL (ELECTION DAY )	
<b>Person Completing this Form</b>	
Name	CHRIS COCKRELL
Title	COUNTY CLERK
<b>About Voting Location</b>	
<i>Example: Tulip Poplar High, 123 Main Street, County High School</i>	
Name	CLAY CENTER
Address	3400 INDIAN MOUND DR
Type	COMMUNITY CENTER
Number of Parking Spaces	Sufficient Parking Spaces?
257	YES
<b>Voting Equipment to be Used</b>	
<b>Number</b>	<b>Type of equipment</b>
11	VERITY PRINT
4	VERITY SCANNERS
1	VERITY ADA

<b>Precincts in Voting Location</b>	
Precinct name	Number of registered voters
ALL	20737

<b>Narrative Plan</b> <i>(please attach additional sheets if needed)</i>
<b>1.) Why is this consolidation of these precincts desirable?</b> <input checked="" type="checkbox"/> This is the same plan used in the last election SIZE OF BUILDING IS LARGE ENOUGH BUT WE ARE ADDING WORKSTATIONS FOR EXPECTED TURNOUT.
<b>2.) In what manner will Precinct Officers be assigned?</b> <input checked="" type="checkbox"/> This location will be fully staffed with election officials
<b>3.) How will the voting location be publicized to voters? How will the location be noted as a "Vote Center?"</b> Paper, social media, website
<b>4.) How will the voting location serve as a focal point to meet the needs of a diverse community?</b>



# Commonwealth of Kentucky

## Petition to Consolidate Precincts and Precinct Election Officers

<b>County Name</b>	
MONTGOMERY	
<b>Election</b>	<b>Dates of Voting</b>
2024 GENERAL (ELECTION DAY )	
<b>Person Completing this Form</b>	
Name	CHRIS COCKRELL
Title	COUNTY CLERK
<b>About Voting Location</b>	
<i>Example: Tulip Poplar High, 123 Main Street, County High School</i>	
Name	CAMARGO ELEMENTARY
Address	4307 CAMARGO RD
Type	SCHOOL
Number of Parking Spaces	Sufficient Parking Spaces?
150	YES
<b>Voting Equipment to be Used</b>	
<b>Number</b>	<b>Type of equipment</b>
5	VERITY PRINT
3	VERITY SCANNERS
1	VERITY ADA

<b>Precincts in Voting Location</b>	
Precinct name	Number of registered voters
ALL	20737

<b>Narrative Plan</b> <i>(please attach additional sheets if needed)</i>
<b>1.) Why is this consolidation of these precincts desirable?</b> <input checked="" type="checkbox"/> This is the same plan used in the last election  SIZE OF BUILDING IS LARGE ENOUGH BUT WE ARE ADDING WORKSTATIONS FOR EXPECTED TURNOUT.
<b>2.) In what manner will Precinct Officers be assigned?</b> <input checked="" type="checkbox"/> This location will be fully staffed with election officials
<b>3.) How will the voting location be publicized to voters? How will the location be noted as a "Vote Center?"</b> Paper, social media, website
<b>4.) How will the voting location serve as a focal point to meet the needs of a diverse community?</b>



# Commonwealth of Kentucky

## Petition to Consolidate Precincts and Precinct Election Officers

<b>County Name</b>	
MONTGOMERY	
<b>Election</b>	<b>Dates of Voting</b>
2024 GENERAL (ELECTION DAY )	
<b>Person Completing this Form</b>	
Name	CHRIS COCKRELL
Title	COUNTY CLERK
<b>About Voting Location</b>	
<i>Example: Tulip Poplar High, 123 Main Street, County High School</i>	
Name	NORTHVIEW ELEMENTARY
Address	1040 MAYSVILLE RD
Type	SCHOOL
Number of Parking Spaces	Sufficient Parking Spaces?
143	YES
<b>Voting Equipment to be Used</b>	
<b>Number</b>	<b>Type of equipment</b>
4	VERITY PRINT
2	VERITY SCANNERS
1	VERITY ADA

<b>Precincts in Voting Location</b>	
Precinct name	Number of registered voters
ALL	20737

<b>Narrative Plan</b> <i>(please attach additional sheets if needed)</i>
<b>1.) Why is this consolidation of these precincts desirable?</b> <input checked="" type="checkbox"/> This is the same plan used in the last election
SIZE OF BUILDING IS LARGE ENOUGH BUT WE ARE ADDING WORKSTATIONS FOR EXPECTED TURNOUT.
<b>2.) In what manner will Precinct Officers be assigned?</b> <input checked="" type="checkbox"/> This location will be fully staffed with election officials
<b>3.) How will the voting location be publicized to voters? How will the location be noted as a "Vote Center?"</b>
Paper, social media, website
<b>4.) How will the voting location serve as a focal point to meet the needs of a diverse community?</b>



# Commonwealth of Kentucky

## Petition to Consolidate Precincts and Precinct Election Officers

<b>County Name</b>	
MONTGOMERY	
<b>Election</b>	<b>Dates of Voting</b>
2024 GENERAL (ELECTION DAY )	
<b>Person Completing this Form</b>	
Name	CHRIS COCKRELL
Title	COUNTY CLERK
<b>About Voting Location</b> <small>Example: Tulip Poplar High, 123 Main Street, County High School</small>	
Name	MAPLETON ELEMENTARY
Address	1040 MAYSVILLE RD
Type	SCHOOL
Number of Parking Spaces	Sufficient Parking Spaces?
159	YES
<b>Voting Equipment to be Used</b>	
<b>Number</b>	<b>Type of equipment</b>
2	VERITY PRINT
1	VERITY SCANNERS
1	VERITY ADA

Precincts in Voting Location	
Precinct name	Number of registered voters
ALL	20737

**Narrative Plan** *(please attach additional sheets if needed)*

**1.) Why is this consolidation of these precincts desirable?**  
 This is the same plan used in the last election

**2.) In what manner will Precinct Officers be assigned?**  
 This location will be fully staffed with election officials

**3.) How will the voting location be publicized to voters? How will the location be noted as a "Vote Center?"**  
 Paper, social media, website

**4.) How will the voting location serve as a focal point to meet the needs of a diverse community?**



# Commonwealth of Kentucky

## Petition to Consolidate Precincts and Precinct Election Officers

<b>County Name</b>	
MONTGOMERY	
<b>Election</b>	<b>Dates of Voting</b>
2024 GENERAL (ELECTION DAY )	
<b>Person Completing this Form</b>	
Name	CHRIS COCKRELL
Title	COUNTY CLERK
<b>About Voting Location</b>	
<i>Example: Tulip Poplar High, 123 Main Street, County High School</i>	
Name	MT STERLINGELEMENTARY
Address	6601 INDIAN MOUND DR
Type	SCHOOL
Number of Parking Spaces	Sufficient Parking Spaces?
160	YES
<b>Voting Equipment to be Used</b>	
<b>Number</b>	<b>Type of equipment</b>
2	VERITY PRINT
1	VERITY SCANNERS
1	VERITY ADA

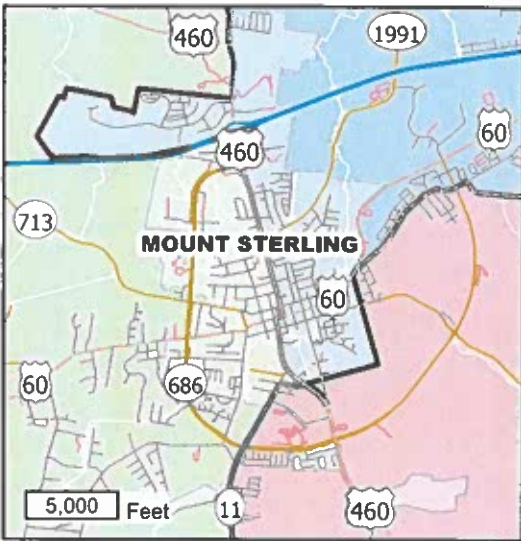
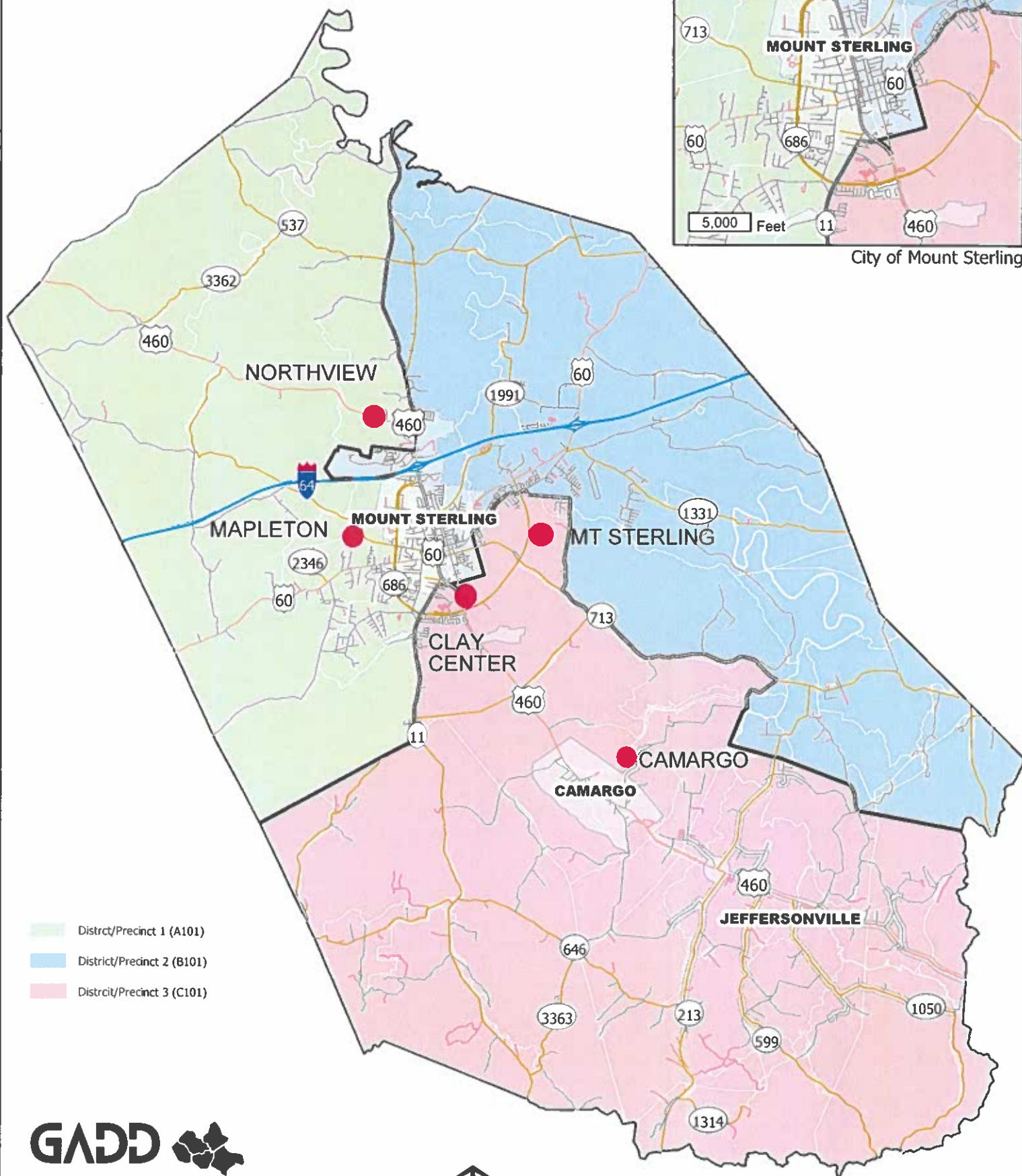
Precincts in Voting Location	
Precinct name	Number of registered voters
ALL	20737

<b>Narrative Plan</b> <i>(please attach additional sheets if needed)</i>
<b>1.) Why is this consolidation of these precincts desirable?</b> <input checked="" type="checkbox"/> This is the same plan used in the last election
<b>2.) In what manner will Precinct Officers be assigned?</b> <input checked="" type="checkbox"/> This location will be fully staffed with election officials
<b>3.) How will the voting location be publicized to voters? How will the location be noted as a "Vote Center?"</b> Paper, social media, website
<b>4.) How will the voting location serve as a focal point to meet the needs of a diverse community?</b>



# Montgomery County

## Commissioner Districts and Precincts



City of Mount Sterling

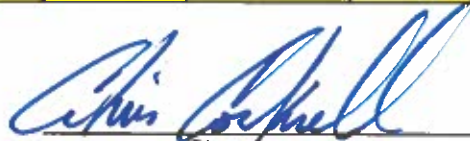
- District/Precinct 1 (A101)
- District/Precinct 2 (B101)
- District/Precinct 3 (C101)



5 Miles

All mapping information is believed to be correct but is not guaranteed without error. While attempts have been made to ensure the accuracy of the information presented, the County Area Development Office does not guarantee accuracy, completeness, or reliability for a particular use. Information herein should be independently verified. If you have any questions please contact County Area Development Office at 606-793-6244 or email: gadd@wvd.gov

COUNTY: MONTGOMERY					
ELECTION: 2024G					
POLLING PLACE NAME	VOTING TYPE	# SCANS	# OF ADA	# OF PRINTS	TOTAL
ABSENTEE MAIL-IN	AB	1	0	1	2
PRECINCTS	ALL				
ABSENTEE WALK-IN	AB	1	0	0	1
PRECINCTS	ALL				
EARLY VOTING	EV	3	1	6	10
PRECINCTS	ALL				
CLAY COMMUNITY CENTER	ED	4	1	5	10
PRECINCTS	ALL		(TOTAL OF 11 ON E.D.)		
MAPLETON ELEMENTARY	ED	1	1	2	4
PRECINCTS	ALL				
MT. STERLING ELEMENTARY	ED	1	1	2	4
PRECINCTS	ALL				
CAMARGO ELEMENTARY	ED	3	1	5	9
PRECINCTS	ALL				
NORTHVIEW ELEMENTARY	ED	2	1	4	7
PRECINCTS	ALL				
MACHINES USED FOR ELECTION		16	6	25	47
MACHINES OWNED		20	6	27	
# OF SPARES		4	0	2	

  
Signature

  
Date