



Commonwealth of Kentucky

County Election Planning Report

County Name	
OLDHAM	
Election	
GENERAL-- NOVEMBER 5, 2024	
Person Completing this Form	
Name	AMY ALVEY
Title	COUNTY CLERK
Phone	502-222-9311

For in-person voting on Election Day, the County Board of Elections will (check one):

- ☐ Consolidate precincts and precinct election officers (Requires Form SBE 74);
- ☒ Utilize the same consolidation plan that was used in a previous election (Requires previous Form SBE 74); or
- ☐ Open all existing precincts.

Excused in-person absentee voting will occur (check one):

- ☒ Within the County Clerk's office; or
- ☐ In another location within the county (Requires Form SBE 74).

No-excuse in-person absentee voting will occur (check one):

- ☐ Within the County Clerk's office; or
- ☒ In another location within the county (Requires Form SBE 74).

Absentee ballot drop-boxes will be located (minimum of one location required):

LaGrange Clerk's Office-100 W Jefferson St, LaGrange, KY 40031

Crestwood Clerk's Office 6710 W Hwy 146, Crestwood, KY 40031/Prospect Clerk's Office, 13206 W Hwy 42, Suite 110, Prospect, KY 40059

I have attached:

- ☒ All required Form SBE 74 sheets
- ☒ Relevant Maps
- ☒ Supplemental Narrative


Signature

Date



Office of the Oldham County Clerk
Amy B. Alvey

July 2, 2024

Ms. Karen Sellers
Executive Director of Kentucky State Board of Election
140 Walnut Street
Frankfort, Kentucky 40601

RE: Oldham County Election Plan-General 2024

Ms. Sellers,

Included with the letter is the election plan for Oldham County for the 2024 General Election. I have also included the minutes from our recent Oldham County Board of Elections where they voted on the plan. This election we will use print-on-demand ballots again which worked great in prior elections.

Drop-Box Location

Drop-box locations will be at all three (3) County Clerk office locations:

- LaGrange: 100 West Jefferson Street, Suite 1, LaGrange, KY 40031
- Crestwood: 6710 West Hwy 146, Crestwood, KY 40031
- Prospect: 13206 W Hwy 42, Suite 110, Prospect, KY 40059

In-person Excused Voting (6 days)

- All in-person excused voting will be done at the Oldham County Clerk's main office location located at 100 West Jefferson Street, Suite 1, LaGrange.

No Excuse Early Voting (3days)

Due to the expected large voter turnout, Oldham County will have two No excuse early voting locations. The John W. Black Community Center located in Buckner, is geographically located in the center of Oldham County, has adequate parking and enough space in the community room to serve 175-200 voters with privacy booths. The second location will be at Crestwood Baptist Church (CBC), which is also used a voting center on Election Day. CBC can accommodate 80-100 voters with privacy booths, has large parking areas and can be easily accessed from local roads. We again will have a Sheriff's Deputy that is present from open to close of the polls for security during all days of early voting at both locations.

Continued:

Election Workers

We anticipate staffing each voting center with a range of 10-17 election workers depending on the number of e-poll books at each location. Early voting will have approximately 13-15 election workers at each location. I will have one of my staff members at each location to assist poll workers with questions or issues as they arise so there will be one point of contact from each location to ensure that all forms are completed at the startup of each day and at closing of the polls. This is a huge asset during the Primary Election to our election staff that remains at our central office on election day.

Election school/training is scheduled for October 10, 2024 and staff will provide additional training for the poll workers who are clerks the following week. We will have three sessions per day, for two days to train any new workers and refresh the seasoned workers on how to open and close the equipment and process voters.

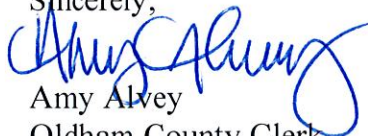
Election Day (November 5, 2024)

Oldham County will again have nine (9) vote centers on election day and will utilize the same locations as used in the Primary 2024 election which were: Oldham County High School, North Oldham High School, South Oldham Middle School, East Oldham Middle School, Goshen Elementary, Westport Baptist Church Life Center, LaGrange Baptist Church, Crestwood Baptist Church, and Pewee Valley Fire. We feel the proposed locations will give voters additional voting location opportunities in the more heavily populated areas in Oldham County. I have included a map with the election plan showing each location. We also have a Sheriff's Deputy that is present from open to close at each location until the equipment is picked up. An alternate Sheriff's Deputy picks up the V-drives and required paperwork/tapes from each voting center and delivers it to the County Clerk to ensure its timely delivery as well as security of the information.

Voter Notification

Voter notification is key to elections. Oldham County's plan is to mail out postcards to every household in Oldham County that will outline their voting options and locations. We will also do notices in our local paper, on social media, local radio public service announcement, as well as utilize the County's electronic message boards located throughout the County to inform the voters.

Sincerely,


Amy Alvey
Oldham County Clerk
amy.alvey@ky.gov

Cc: Oldham County Board of Elections



Commonwealth of Kentucky

Petition to Consolidate Precincts and Precinct Election Officers

County Name	
OLDHAM	
Election	Dates of Voting
GENERAL	Oct 31, Nov 1, Nov 2, 2024
Person Completing this Form	
Name	Amy Alvey
Title	County Clerk
About Voting Location	
<i>Example: Tulip Poplar High, 123 Main Street, County High School</i>	
Name	John Black Community Center
Address	1551 N Hwy 393, Buckner, KY 40010
Type	Vote Center-Countywide
Number of Parking Spaces	Sufficient Parking Spaces?
76 (+85 overflow parking)	yes
Voting Equipment to be Used	
Number	Type of equipment
	Hart Intercivic Verity

Precincts in Voting Location	
Precinct name	Number of registered voters
	Countywide
JBC	56,808

Narrative Plan <i>(please attach additional sheets if needed)</i>
1.) Why is this consolidation of these precincts desirable? <input checked="" type="checkbox"/> This is the same plan used in the last election It is desirable because it makes it convenient for voters and the best use of poll workers
2.) In what manner will Precinct Officers be assigned? <input checked="" type="checkbox"/> This location will be fully staffed with election officials Center will be balanced with previous and new poll workers from all parties, as submitted by local parties.
3.) How will the voting location be publicized to voters? How will the location be noted as a "Vote Center?" Postcards will be mailed to every household in Oldham County, social media, website, newspaper and use of County electronic message boards.
4.) How will the voting location serve as a focal point to meet the needs of a diverse community? Oldham County has always met the needs of all voters and will continue to do so.



★ Voting Center Entrance



Commonwealth of Kentucky

Petition to Consolidate Precincts and Precinct Election Officers

County Name	
OLDHAM	
Election	Dates of Voting
GENERAL	Oct 31, Nov 1, Nov 2, 2024
Person Completing this Form	
Name	Amy Alvey
Title	County Clerk
About Voting Location	
<i>Example: Tulip Poplar High, 123 Main Street, County High School</i>	
Name	Crestwood Baptist Church
Address	6400 Sweetbay Dr, Crestwood, KY 40014
Type	Vote Center-Countywide
Number of Parking Spaces	Sufficient Parking Spaces?
123 (+267 overflow)	yes
Voting Equipment to be Used	
Number	Type of equipment
	Hart Intercivic Verity

Precincts in Voting Location	
Precinct name	Number of registered voters
	Countywide
CBC	56,808

Narrative Plan <i>(please attach additional sheets if needed)</i>
1.) Why is this consolidation of these precincts desirable? <input checked="" type="checkbox"/> This is the same plan used in the last election It is desirable because it makes it convenient for voters and the best use of poll workers
2.) In what manner will Precinct Officers be assigned? <input checked="" type="checkbox"/> This location will be fully staffed with election officials Center will be balanced with previous and new poll workers from all parties, as submitted by local parties.
3.) How will the voting location be publicized to voters? How will the location be noted as a "Vote Center?" Postcards will be mailed to every household in Oldham County, social media, website, newspaper and use of County electronic message boards.
4.) How will the voting location serve as a focal point to meet the needs of a diverse community? Oldham County has always met the needs of all voters and will continue to do so.



Crestwood Baptist Church
Election Day
November 5, 2024
123 Primary Parking Spaces
267+ Overflow Parking Spaces
★ Voting Center Entrance



Commonwealth of Kentucky

Petition to Consolidate Precincts and Precinct Election Officers

County Name	
OLDHAM	
Election	Dates of Voting
GENERAL	November 5, 2024
Person Completing this Form	
Name	Amy Alvey
Title	County Clerk
About Voting Location	
<i>Example: Tulip Poplar High, 123 Main Street, County High School</i>	
Name	Crestwood Baptist Church
Address	6400 Sweetbay Dr, Crestwood, KY 40014
Type	Vote Center-Countywide
Number of Parking Spaces	Sufficient Parking Spaces?
123 (+267 overflow)	yes
Voting Equipment to be Used	
Number	Type of equipment
	Hart Intercivic Verity

Precincts in Voting Location	
Precinct name	Number of registered voters
	Countywide
CBC	56,808

Narrative Plan *(please attach additional sheets if needed)*

1.) Why is this consolidation of these precincts desirable?

☒ This is the same plan used in the last election

It is desirable because it makes it convenient for voters and the best use of poll workers

2.) In what manner will Precinct Officers be assigned?

☒ This location will be fully staffed with election officials

Center will be balanced with previous and new poll workers from all parties, as submitted by local parties.

3.) How will the voting location be publicized to voters? How will the location be noted as a "Vote Center?"

Postcards will be mailed to every household in Oldham County, social media, website, newspaper and use of County electronic message boards.

4.) How will the voting location serve as a focal point to meet the needs of a diverse community?

Oldham County has always met the needs of all voters and will continue to do so.



Crestwood Baptist Church
Early Voting
Oct 31, Nov 1, Nov 2, 2024
123 Primary Parking Spaces
267+ Overflow Parking Spaces
★ Voting Center Entrance



Commonwealth of Kentucky

Petition to Consolidate Precincts and Precinct Election Officers

County Name	
OLDHAM	
Election	Dates of Voting
GENERAL	November 5, 2024
Person Completing this Form	
Name	Amy Alvey
Title	County Clerk
About Voting Location	
<i>Example: Tulip Poplar High, 123 Main Street, County High School</i>	
Name	East Oldham Middle School
Address	1201 E Hwy 22, Crestwood, KY 40014
Type	Vote Center-Countywide
Number of Parking Spaces	Sufficient Parking Spaces?
73(+40 overflow parking)	yes
Voting Equipment to be Used	
Number	Type of equipment
	Hart Intercivic Verity

Precincts in Voting Location	
Precinct name	Number of registered voters
	Countywide
EOMS	56,808

Narrative Plan (please attach additional sheets if needed)
1.) Why is this consolidation of these precincts desirable? <input checked="" type="checkbox"/> This is the same plan used in the last election It is desirable because it makes it convenient for voters and the best use of poll workers
2.) In what manner will Precinct Officers be assigned? <input checked="" type="checkbox"/> This location will be fully staffed with election officials Center will be balanced with previous and new poll workers from all parties, as submitted by local parties.
3.) How will the voting location be publicized to voters? How will the location be noted as a "Vote Center?" Postcards will be mailed to every household in Oldham County, social media, website, newspaper and use of County electronic message boards.
4.) How will the voting location serve as a focal point to meet the needs of a diverse community? Oldham County has always met the needs of all voters and will continue to do so.



East Oldham Middle School
Election Day
November 5, 2024
73 Primary Parking Spaces
40 Overflow Parking Spaces
★ Voting Center Entrance



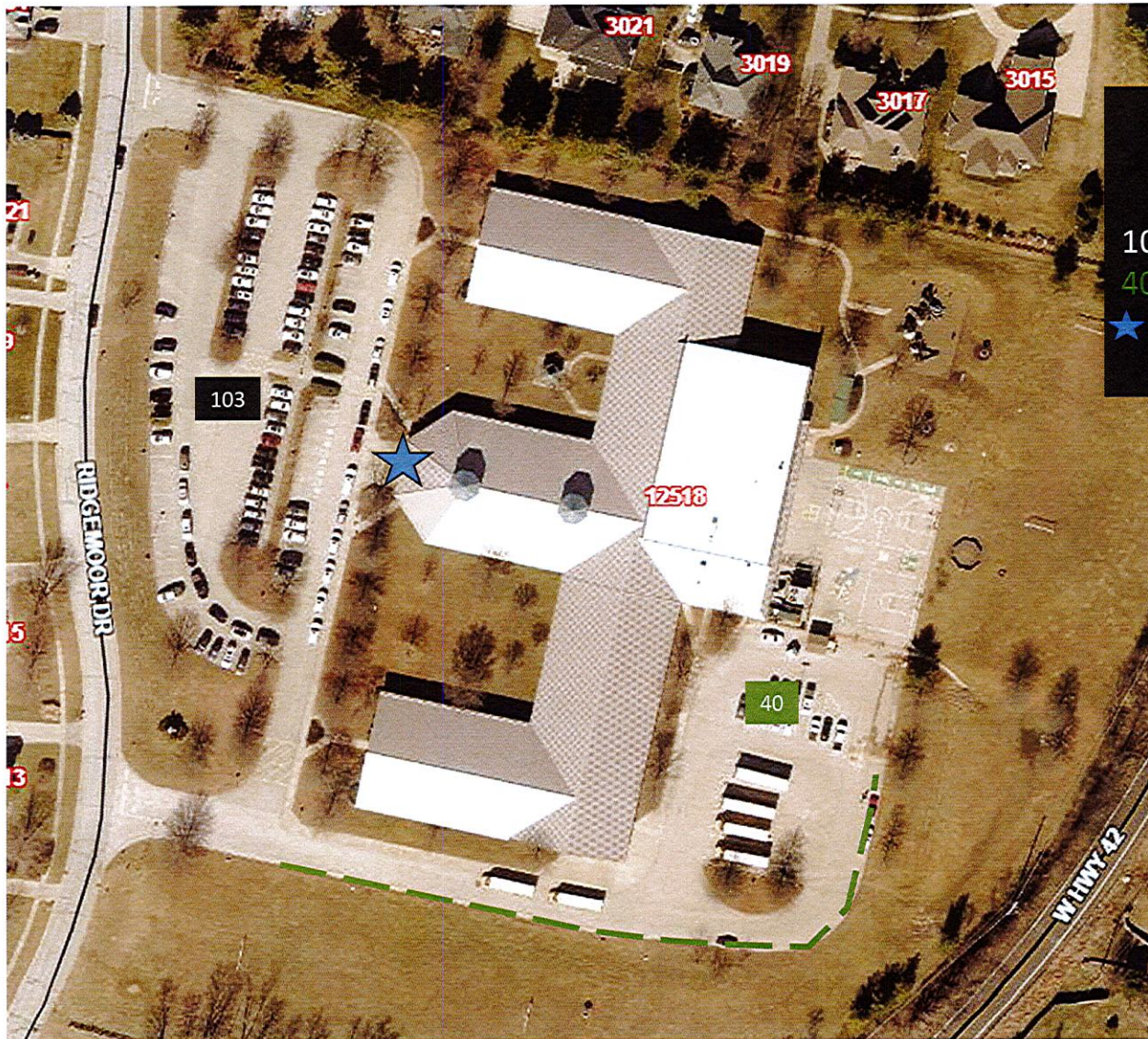
Commonwealth of Kentucky

Petition to Consolidate Precincts and Precinct Election Officers

County Name	
OLDHAM	
Election	Dates of Voting
GENERAL	November 5, 2024
Person Completing this Form	
Name	Amy Alvey
Title	County Clerk
About Voting Location	
<i>Example: Tulip Poplar High, 123 Main Street, County High School</i>	
Name	Goshen Elementary
Address	12518 Ridgemoor Dr, Prospect, KY 40059
Type	Vote Center-Countywide
Number of Parking Spaces	Sufficient Parking Spaces?
103(+40 overflow parking)	yes
Voting Equipment to be Used	
Number	Type of equipment
	Hart Intercivic Verity

Precincts in Voting Location	
Precinct name	Number of registered voters
	Countywide
Goshen	56,808

Narrative Plan <i>(please attach additional sheets if needed)</i>
1.) Why is this consolidation of these precincts desirable? <input type="checkbox"/> This is the same plan used in the last election It is desirable because it makes it convenient for voters and the best use of poll workers. This new location will replace Sojourn Church and provide a voting center along the Highway 42 corridor to service the dense population near the County line.
2.) In what manner will Precinct Officers be assigned? <input checked="" type="checkbox"/> This location will be fully staffed with election officials Center will be balanced with previous and new poll workers from all parties, as submitted by local parties.
3.) How will the voting location be publicized to voters? How will the location be noted as a "Vote Center?" Postcards will be mailed to every household in Oldham County, social media, website, newspaper and use of County electronic message boards.
4.) How will the voting location serve as a focal point to meet the needs of a diverse community? Oldham County has always met the needs of all voters and will continue to do so.



Goshen Elementary
Election Day
November 5, 2024
103 Primary Parking Spaces
40 Overflow Parking Spaces
★ Voting Center Entrance



Commonwealth of Kentucky

Petition to Consolidate Precincts and Precinct Election Officers

County Name	
OLDHAM	
Election	Dates of Voting
GENERAL	November 5, 2024
Person Completing this Form	
Name	Amy Alvey
Title	County Clerk
About Voting Location	
<i>Example: Tulip Poplar High, 123 Main Street, County High School</i>	
Name	LaGrange Baptist Church
Address	1139 Commerce Pkwy, LaGrange, KY 40031
Type	Vote Center-Countywide
Number of Parking Spaces	Sufficient Parking Spaces?
83(+367 overflow parking)	yes
Voting Equipment to be Used	
Number	Type of equipment
	Hart Intercivic Verity

Precincts in Voting Location	
Precinct name	Number of registered voters
	Countywide
LBC	56,808

Narrative Plan *(please attach additional sheets if needed)*

1.) Why is this consolidation of these precincts desirable?

☒ This is the same plan used in the last election

It is desirable because it makes it convenient for voters and the best use of poll workers

2.) In what manner will Precinct Officers be assigned?

☒ This location will be fully staffed with election officials

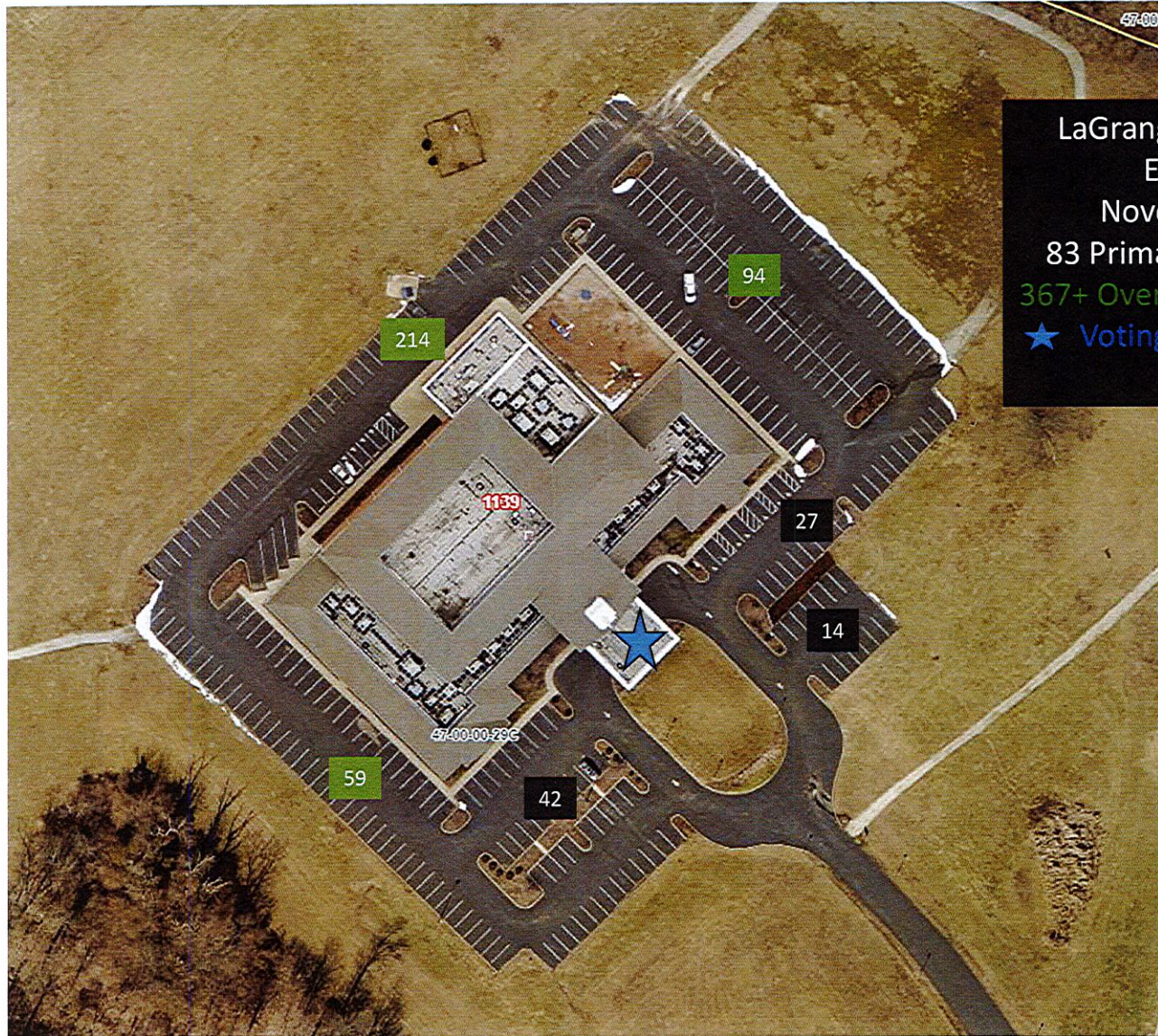
Center will be balanced with previous and new poll workers from all parties, as submitted by local parties.

3.) How will the voting location be publicized to voters? How will the location be noted as a "Vote Center?"

Postcards will be mailed to every household in Oldham County, social media, website, newspaper and use of County electronic message boards.

4.) How will the voting location serve as a focal point to meet the needs of a diverse community?

Oldham County has always met the needs of all voters and will continue to do so.



LaGrange Baptist Church
Election Day
November 5, 2024
83 Primary Parking Spaces
367+ Overflow Parking Spaces
★ Voting Center Entrance



Commonwealth of Kentucky

Petition to Consolidate Precincts and Precinct Election Officers

County Name	
OLDHAM	
Election	Dates of Voting
GENERAL	November 5, 2024
Person Completing this Form	
Name	Amy Alvey
Title	County Clerk
About Voting Location	
<i>Example: Tulip Poplar High, 123 Main Street, County High School</i>	
Name	North Oldham High School
Address	1815 S Hwy 1793, Goshen KY 40026
Type	Vote Center-Countywide
Number of Parking Spaces	Sufficient Parking Spaces?
224(+52 overflow parking)	yes
Voting Equipment to be Used	
Number	Type of equipment
	Hart Intercivic Verity

Precincts in Voting Location	
Precinct name	Number of registered voters
	Countywide
NOHS	56,808

Narrative Plan *(please attach additional sheets if needed)*

1.) Why is this consolidation of these precincts desirable?

☒ This is the same plan used in the last election

It is desirable because it makes it convenient for voters and the best use of poll workers

2.) In what manner will Precinct Officers be assigned?

☒ This location will be fully staffed with election officials

Center will be balanced with previous and new poll workers from all parties, as submitted by local parties.

3.) How will the voting location be publicized to voters? How will the location be noted as a "Vote Center?"

Postcards will be mailed to every household in Oldham County, social media, website, newspaper and use of County electronic message boards.

4.) How will the voting location serve as a focal point to meet the needs of a diverse community?

Oldham County has always met the needs of all voters and will continue to do so.



North Oldham High School
Election Day
November 5, 2024
224 Parking spaces
52 Overflow Parking Spaces
★ Voting Center Entrance



Commonwealth of Kentucky

Petition to Consolidate Precincts and Precinct Election Officers

County Name	
OLDHAM	
Election	Dates of Voting
GENERAL	November 5, 2024
Person Completing this Form	
Name	Amy Alvey
Title	County Clerk
About Voting Location	
<i>Example: Tulip Poplar High, 123 Main Street, County High School</i>	
Name	Oldham County High School
Address	1150 N Hwy 393, Buckner, KY 40010
Type	Vote Center-Countywide
Number of Parking Spaces	Sufficient Parking Spaces?
247(+153 overflow parking)	yes
Voting Equipment to be Used	
Number	Type of equipment
	Hart Intercivic Verity

Precincts in Voting Location	
Precinct name	Number of registered voters
	Countywide
OCHS	56,808

Narrative Plan <i>(please attach additional sheets if needed)</i>
1.) Why is this consolidation of these precincts desirable? <input checked="" type="checkbox"/> This is the same plan used in the last election It is desirable because it makes it convenient for voters and the best use of poll workers
2.) In what manner will Precinct Officers be assigned? <input checked="" type="checkbox"/> This location will be fully staffed with election officials Center will be balanced with previous and new poll workers from all parties, as submitted by local parties.
3.) How will the voting location be publicized to voters? How will the location be noted as a "Vote Center?" Postcards will be mailed to every household in Oldham County, social media, website, newspaper and use of County electronic message boards.
4.) How will the voting location serve as a focal point to meet the needs of a diverse community? Oldham County has always met the needs of all voters and will continue to do so.



Oldham County High School
Election Day
November 5, 2024
247 Primary Parking Spaces
153 Overflow Parking Spaces
★ Voting Center Entrance



Commonwealth of Kentucky

Petition to Consolidate Precincts and Precinct Election Officers

County Name	
OLDHAM	
Election	Dates of Voting
GENERAL	November 5, 2024
Person Completing this Form	
Name	Amy Alvey
Title	County Clerk
About Voting Location	
<i>Example: Tulip Poplar High, 123 Main Street, County High School</i>	
Name	Pewee Valley Fire
Address	8607 Foley Ave, Pewee Valley, KY 40056
Type	Vote Center-Countywide
Number of Parking Spaces	Sufficient Parking Spaces?
28(+23 overflow parking)	yes
Voting Equipment to be Used	
Number	Type of equipment
	Hart Intercivic Verity

Precincts in Voting Location	
Precinct name	Number of registered voters
	Countywide
PVF	56,808

Narrative Plan *(please attach additional sheets if needed)*

1.) Why is this consolidation of these precincts desirable?

☒ This is the same plan used in the last election

It is desirable because it makes it convenient for voters and the best use of poll workers

2.) In what manner will Precinct Officers be assigned?

☒ This location will be fully staffed with election officials

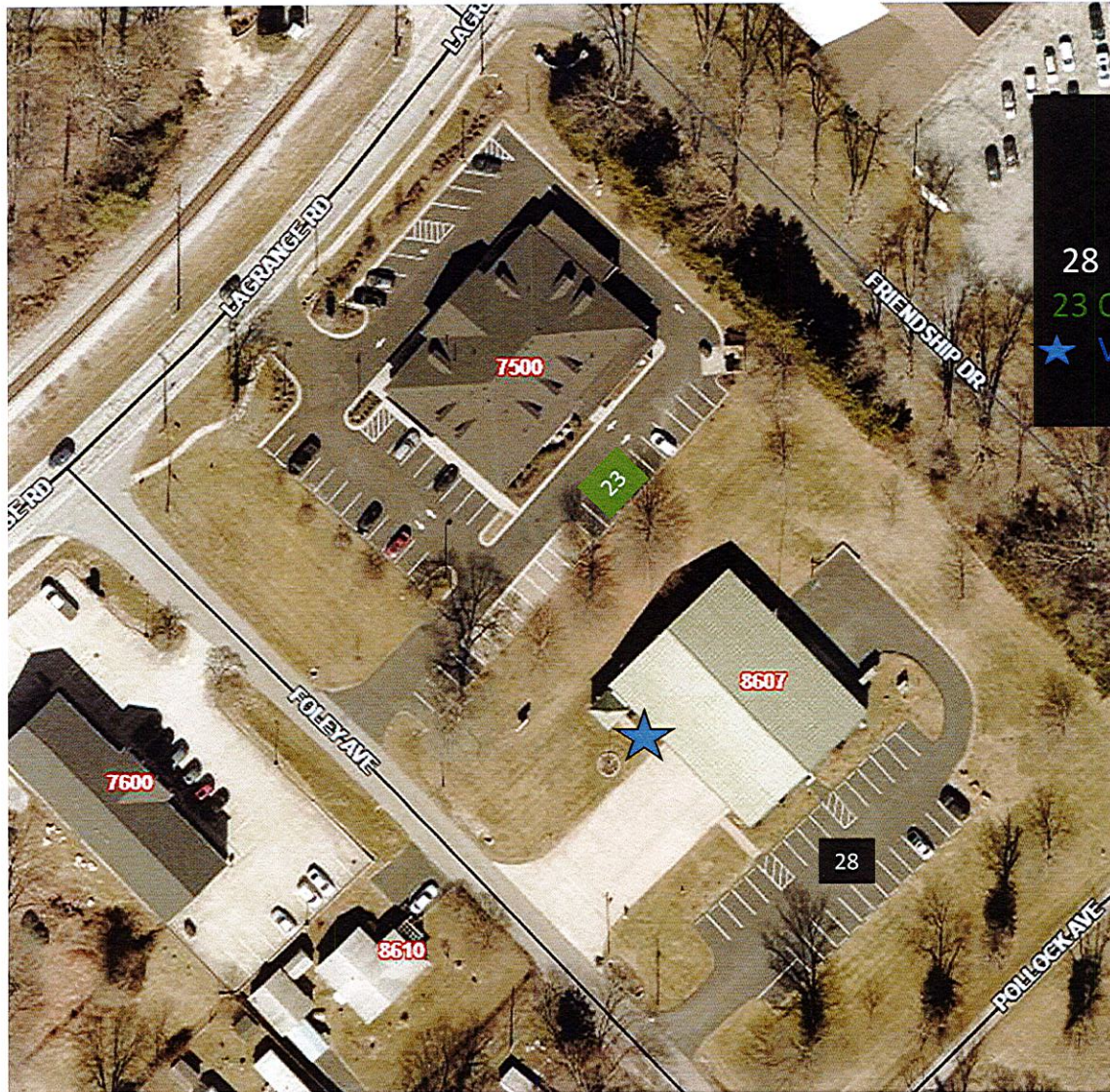
Center will be balanced with previous and new poll workers from all parties, as submitted by local parties.

3.) How will the voting location be publicized to voters? How will the location be noted as a "Vote Center?"

Postcards will be mailed to every household in Oldham County, social media, website, newspaper and use of County electronic message boards.

4.) How will the voting location serve as a focal point to meet the needs of a diverse community?

Oldham County has always met the needs of all voters and will continue to do so.



Pewee Valley Fire

Election Day

November 5, 2024

28 Primary Parking Spaces

23 Overflow Parking Spaces

★ Voting Center Entrance



Commonwealth of Kentucky

Petition to Consolidate Precincts and Precinct Election Officers

County Name	
OLDHAM	
Election	Dates of Voting
GENERAL	November 5, 2024
Person Completing this Form	
Name	Amy Alvey
Title	County Clerk
About Voting Location	
<i>Example: Tulip Poplar High, 123 Main Street, County High School</i>	
Name	South Oldham Middle School
Address	6403 W Hwy 146, Crestwood, KY 40014
Type	Vote Center-Countywide
Number of Parking Spaces	Sufficient Parking Spaces?
135(+200+ overflow parking)	yes
Voting Equipment to be Used	
Number	Type of equipment
	Hart Intercivic Verity

Precincts in Voting Location	
Precinct name	Number of registered voters
	Countywide
SOMS	56,808

Narrative Plan *(please attach additional sheets if needed)*

1.) Why is this consolidation of these precincts desirable?

☒ This is the same plan used in the last election

It is desirable because it makes it convenient for voters and the best use of poll workers

2.) In what manner will Precinct Officers be assigned?

☒ This location will be fully staffed with election officials

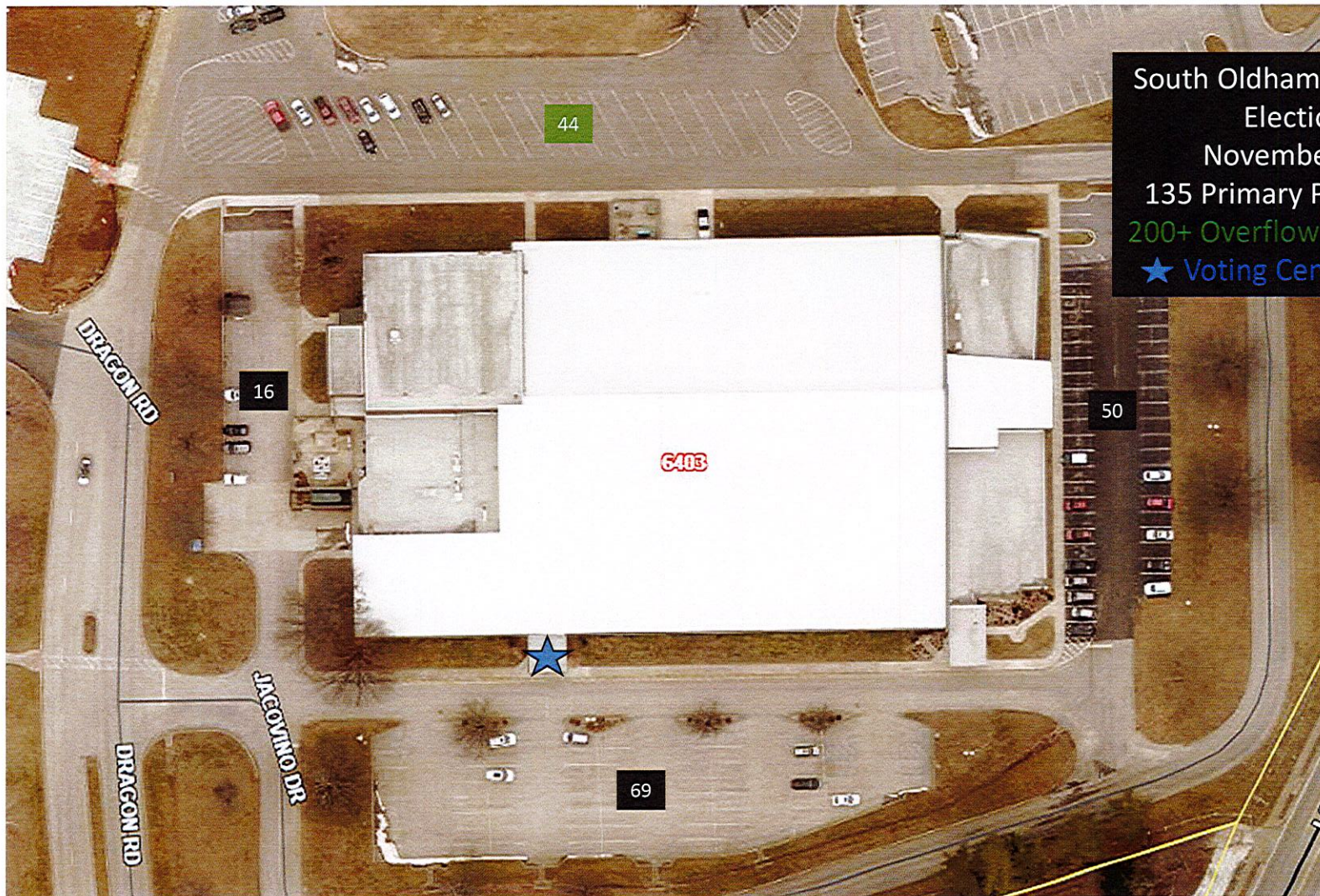
Center will be balanced with previous and new poll workers from all parties, as submitted by local parties.

3.) How will the voting location be publicized to voters? How will the location be noted as a "Vote Center?"

Postcards will be mailed to every household in Oldham County, social media, website, newspaper and use of County electronic message boards.

4.) How will the voting location serve as a focal point to meet the needs of a diverse community?

Oldham County has always met the needs of all voters and will continue to do so.



South Oldham Middle School
Election Day
November 5, 2024
135 Primary Parking Spaces
200+ Overflow Parking Spaces
★ Voting Center Entrance



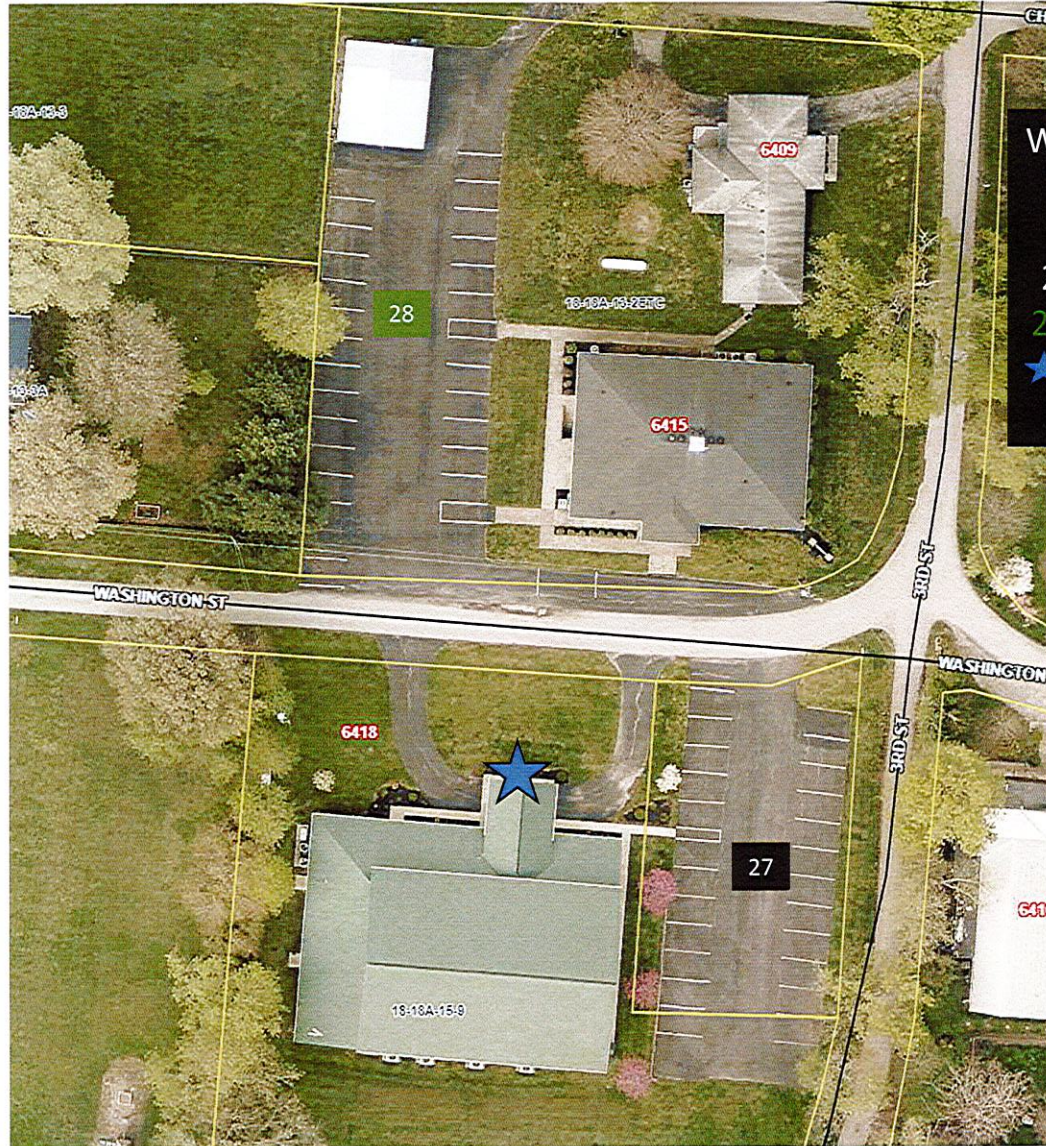
Commonwealth of Kentucky

Petition to Consolidate Precincts and Precinct Election Officers

County Name	
OLDHAM	
Election	Dates of Voting
GENERAL	November 5, 2024
Person Completing this Form	
Name	Amy Alvey
Title	County Clerk
About Voting Location	
<i>Example: Tulip Poplar High, 123 Main Street, County High School</i>	
Name	Westport Baptist Church Life Center
Address	6415 Washington St, Westport, KY 40077
Type	Vote Center-Countywide
Number of Parking Spaces	Sufficient Parking Spaces?
27	yes
Voting Equipment to be Used	
Number	Type of equipment
	Hart Intercivic Verity

Precincts in Voting Location	
Precinct name	Number of registered voters
	Countywide
WBC	56, 808

Narrative Plan <i>(please attach additional sheets if needed)</i>
1.) Why is this consolidation of these precincts desirable? <input checked="" type="checkbox"/> This is the same plan used in the last election It is desirable because it makes it convenient for voters and the best use of poll workers
2.) In what manner will Precinct Officers be assigned? <input checked="" type="checkbox"/> This location will be fully staffed with election officials Center will be balanced with previous and new poll workers from all parties, as submitted by local parties.
3.) How will the voting location be publicized to voters? How will the location be noted as a "Vote Center?" Postcards will be mailed to every household in Oldham County, social media, website, newspaper and use of County electronic message boards.
4.) How will the voting location serve as a focal point to meet the needs of a diverse community? Oldham County has always met the needs of all voters and will continue to do so.



Westport Baptist Life Center
Election Day
November 5, 2024
27 Primary Parking Spaces
28 Overflow Parking Spaces
★ Voting Center Entrance

Oldham County Magisterial Districts

