



# Commonwealth of Kentucky

## County Election Planning Report

<b>County Name</b>	
PULASKI	
<b>Election</b>	
2024 GENERAL	
<b>Person Completing this Form</b>	
Name	MARK VAUGHT
Title	DEPUTY CLERK
Phone	606/679-2042

**For in-person voting on Election Day, the County Board of Elections will (check one):**

- Consolidate precincts and precinct election officers (Requires Form SBE 74);
- Utilize the same consolidation plan that was used in a previous election (Requires previous Form SBE 74); or
- Open all existing precincts.

**Excused in-person absentee voting will occur (check one):**

- Within the County Clerk's office; or
- In another location within the county (Requires Form SBE 74).

**No-excuse in-person absentee voting will occur (check one):**

- Within the County Clerk's office; or
- In another location within the county (Requires Form SBE 74).

**Absentee ballot drop-boxes will be located (minimum of one location required):**

MVL BRANCH 124 N MAIN ST SOMERSET MAIN OFFICE 100 N MAIN ST SOMERSET  
 GRAND CENTRAL BRANCH 2821 S HWY 27 SOMERSET, KY

**I have attached:**

- All required Form SBE 74 sheets
- Relevant Maps
- Supplemental Narrative

Mark Vaught 7/16/2024  
 Signature Date

**Pulaski County Board of Elections**  
**100 N Main Street Room 208**  
**PO Box 739**  
**Somerset, Kentucky 42502**

Karen Sellers  
State Board of Elections  
140 Walnut Street  
Frankfort, Kentucky 40601

Ms. Sellers

Follows is the Pulaski County Voting Plan for the 2024 General Election.  
The basis of this plan was approved by the Pulaski County Board of Election during its regularly  
scheduled meeting conducted on the 26<sup>th</sup> of June 2024.

Thank You

A handwritten signature in blue ink, appearing to read "Mark Vaught".

Mark Vaught  
Deputy Clerk-Election



# Commonwealth of Kentucky

## Petition to Consolidate Precincts and Precinct Election Officers

<b>County Name</b>	
Pulaski	
<b>Election</b>	
2024 General (6-Day Voting) 10-23 Thru 10-30	
<b>Dates of Voting</b>	
2024 General (6-Day Voting) 10-23 Thru 10-30	
<b>Person Completing this Form</b>	
Name	Mark Vaught
Title	Deputy Clerk-Elections
<b>About Voting Location</b>	
<i>Example: Tulip Poplar High, 123 Main Street, County High School</i>	
Name	County Clerks Office
Address	100 N Main St Room 208 Somerset 42501
Type	Courthouse
Number of Parking Spaces	Sufficient Parking Spaces?
84	Y
<b>Voting Equipment to be Used</b>	
<b>Number</b>	<b>Type of equipment</b>
2	Hart Intercivic Verity Scanners
1	Hart Intercivic Duo Standalone
1	Hart Intercivic Print

Precincts in Voting Location	
Precinct name	Number of registered voters
All	51,350

<b>Narrative Plan</b> <i>(please attach additional sheets if needed)</i>
<b>1.) Why is this consolidation of these precincts desirable?</b>
<input type="checkbox"/> This is the same plan used in the last election
This is a modification of our last plan. We are increasing the equipment to suit the needs of the voting center.
<b>2.) In what manner will Precinct Officers be assigned?</b>
<input checked="" type="checkbox"/> This location will be fully staffed with election officials
<b>3.) How will the voting location be publicized to voters? How will the location be noted as a "Vote Center?"</b>
All Locations are Vote Centers.
<b>4.) How will the voting location serve as a focal point to meet the needs of a diverse community?</b>



# Commonwealth of Kentucky

## Petition to Consolidate Precincts and Precinct Election Officers

County Name	
Pulaski	
Election	Dates of Voting
2024 General (Early Voting)	10-31 Thru 11-2
Person Completing this Form	
Name	Mark Vaught
Title	Deputy Clerk-Elections
About Voting Location	
<i>Example: Tulip Poplar High, 123 Main Street, County High School</i>	
Name	H Rogers Regional Fire Training Ctr
Address	180 Oak Leaf Lane Somerset 42503
Type	County Government Facility
Number of Parking Spaces	Sufficient Parking Spaces?
193	Y
Voting Equipment to be Used	
Number	Type of equipment
2	Hart Intercivic Verity Scanners
1	Hart Intercivic Duo Standalone
3	Hart Intercivic Print

Precincts in Voting Location	
Precinct name	Number of registered voters
All	51,350

Narrative Plan <i>(please attach additional sheets if needed)</i>
<b>1.) Why is this consolidation of these precincts desirable?</b> <input type="checkbox"/> This is the same plan used in the last election  This is a modification of our last plan. We are increasing the equipment to suit the needs of the voting center.
<b>2.) In what manner will Precinct Officers be assigned?</b> <input checked="" type="checkbox"/> This location will be fully staffed with election officials
<b>3.) How will the voting location be publicized to voters? How will the location be noted as a "Vote Center?"</b>  All Locations are Vote Centers.
<b>4.) How will the voting location serve as a focal point to meet the needs of a diverse community?</b>



# Commonwealth of Kentucky

## Petition to Consolidate Precincts and Precinct Election Officers

<b>County Name</b>	
Pulaski	
<b>Election</b>	<b>Dates of Voting</b>
2024 General (Early Voting)	10-31 Thru 11-2
<b>Person Completing this Form</b>	
Name	Mark Vaught
Title	Deputy Clerk-Elections
<b>About Voting Location</b>	
<i>Example: Tulip Poplar High, 123 Main Street, County High School</i>	
Name	Rocky Hollow Recreational City
Address	420 S Central Ave Somerset 42501
Type	City Recreational Center
Number of Parking Spaces	Sufficient Parking Spaces?
174	Y
<b>Voting Equipment to be Used</b>	
<b>Number</b>	<b>Type of equipment</b>
2	Hart Intercivic Verity Scanners
1	Hart Intercivic Duo Standalone
2	Hart Intercivic Print

Precincts in Voting Location	
Precinct name	Number of registered voters
All	51,350

**Narrative Plan** *(please attach additional sheets if needed)*

**1.) Why is this consolidation of these precincts desirable?**  
 This is the same plan used in the last election

This is a modification of our last plan. We are increasing the equipment to suit the needs of the voting center.

**2.) In what manner will Precinct Officers be assigned?**  
 This location will be fully staffed with election officials

**3.) How will the voting location be publicized to voters? How will the location be noted as a "Vote Center?"**

All Locations are Vote Centers.

**4.) How will the voting location serve as a focal point to meet the needs of a diverse community?**



# Commonwealth of Kentucky

## Petition to Consolidate Precincts and Precinct Election Officers

County Name	
Pulaski	
Election	
Dates of Voting	
2024 General (Early Voting) 10-31 Thru 11-2	
Person Completing this Form	
Name	Mark Vaught
Title	Deputy Clerk-Elections
About Voting Location	
<i>Example: Tulip Poplar High, 123 Main Street, County High School</i>	
Name	South KY RECC
Address	200 Electric Ave Somerset 42501
Type	Community Room
Number of Parking Spaces	Sufficient Parking Spaces?
111	Y
Voting Equipment to be Used	
Number	Type of equipment
2	Hart Intercivic Verity Scanners
1	Hart Intercivic Duo Standalone
2	Hart Intercivic Print

Precincts in Voting Location	
Precinct name	Number of registered voters
All	51,350

Narrative Plan <small>(please attach additional sheets if needed)</small>
<p><b>1.) Why is this consolidation of these precincts desirable?</b>  <input type="checkbox"/> This is the same plan used in the last election</p> <p>This is a modification of our last plan. We are increasing the equipment to suit the needs of the voting center.</p>
<p><b>2.) In what manner will Precinct Officers be assigned?</b>  <input checked="" type="checkbox"/> This location will be fully staffed with election officials</p>
<p><b>3.) How will the voting location be publicized to voters? How will the location be noted as a "Vote Center?"</b></p> <p>All Locations are Vote Centers.</p>
<p><b>4.) How will the voting location serve as a focal point to meet the needs of a diverse community?</b></p>



# Commonwealth of Kentucky

## Petition to Consolidate Precincts and Precinct Election Officers

County Name	
Pulaski	
Election	Dates of Voting
2024 General (Early Voting) 10-31 Thru 11-2	
Person Completing this Form	
Name	Mark Vaught
Title	Deputy Clerk-Elections
About Voting Location	
<i>Example: Tulip Poplar High, 123 Main Street, County High School</i>	
Name	Nancy Elementary Gym
Address	240 Hwy 196 Nancy 42544
Type	School Gymnasium
Number of Parking Spaces	Sufficient Parking Spaces?
103	Y
Voting Equipment to be Used	
Number	Type of equipment
2	Hart Intercivic Verity Scanners
1	Hart Intercivic Duo Standalone
2	Hart Intercivic Print

Precincts in Voting Location	
Precinct name	Number of registered voters
All	51,350

Narrative Plan <small>(please attach additional sheets if needed)</small>
<p><b>1.) Why is this consolidation of these precincts desirable?</b></p> <p><input type="checkbox"/> This is the same plan used in the last election</p> <p>This is a modification of our last plan. We are increasing the equipment to suit the needs of the voting center.</p>
<p><b>2.) In what manner will Precinct Officers be assigned?</b></p> <p><input checked="" type="checkbox"/> This location will be fully staffed with election officials</p>
<p><b>3.) How will the voting location be publicized to voters? How will the location be noted as a "Vote Center?"</b></p> <p>All Locations are Vote Centers.</p>
<p><b>4.) How will the voting location serve as a focal point to meet the needs of a diverse community?</b></p>



# Commonwealth of Kentucky

## Petition to Consolidate Precincts and Precinct Election Officers

County Name	
Pulaski	
Election	Dates of Voting
2024 General (Election Day )	11-5
Person Completing this Form	
Name	Mark Vaught
Title	Deputy Clerk-Elections
About Voting Location	
<i>Example: Tulip Poplar High, 123 Main Street, County High School</i>	
Name	H Rogers Regional Fire Training Ctr
Address	180 Oak Leaf Lane Somerset 42503
Type	County Government Facility
Number of Parking Spaces	Sufficient Parking Spaces?
193	Y
Voting Equipment to be Used	
Number	Type of equipment
3	Hart Intercivic Verity Scanners
1	Hart Intercivic Duo Standalone
3	Hart Intercivic Print

Precincts in Voting Location	
Precinct name	Number of registered voters
All	51,350

<b>Narrative Plan</b> <i>(please attach additional sheets if needed)</i>	
<b>1.) Why is this consolidation of these precincts desirable?</b> <input type="checkbox"/> This is the same plan used in the last election <p>This is a modification of our last plan. We are increasing the equipment to suit the needs of the voting center.</p>	
<b>2.) In what manner will Precinct Officers be assigned?</b> <input checked="" type="checkbox"/> This location will be fully staffed with election officials  	
<b>3.) How will the voting location be publicized to voters? How will the location be noted as a "Vote Center?"</b> <p>All Locations are Vote Centers.</p>	
<b>4.) How will the voting location serve as a focal point to meet the needs of a diverse community?</b>  	





# Commonwealth of Kentucky

## Petition to Consolidate Precincts and Precinct Election Officers

<b>County Name</b>	
Pulaski	
<b>Election</b>	<b>Dates of Voting</b>
2024 General (Election Day )	11-5
<b>Person Completing this Form</b>	
Name	Mark Vaught
Title	Deputy Clerk-Elections
<b>About Voting Location</b>	
<i>Example: Tulip Poplar High, 123 Main Street, County High School</i>	
Name	Rocky Hollow Recreational City
Address	420 S Central Ave Somerset 42501
Type	City Recreational Center
Number of Parking Spaces	Sufficient Parking Spaces?
174	Y
<b>Voting Equipment to be Used</b>	
<b>Number</b>	<b>Type of equipment</b>
2	Hart Intercivic Verity Scanners
1	Hart Intercivic Duo Standalone
3	Hart Intercivic Print

Precincts in Voting Location	
Precinct name	Number of registered voters
All	51,350

<b>Narrative Plan</b> <i>(please attach additional sheets if needed)</i>
<b>1.) Why is this consolidation of these precincts desirable?</b> <input type="checkbox"/> This is the same plan used in the last election <p>This is a modification of our last plan. We are increasing the equipment to suit the needs of the voting center.</p>
<b>2.) In what manner will Precinct Officers be assigned?</b> <input checked="" type="checkbox"/> This location will be fully staffed with election officials 
<b>3.) How will the voting location be publicized to voters? How will the location be noted as a "Vote Center?"</b> <p>All Locations are Vote Centers.</p>
<b>4.) How will the voting location serve as a focal point to meet the needs of a diverse community?</b> 



# Commonwealth of Kentucky

## Petition to Consolidate Precincts and Precinct Election Officers

County Name	
Pulaski	
Election	Dates of Voting
2024 General (Election Day)	11-5
Person Completing this Form	
Name	Mark Vaught
Title	Deputy Clerk-Elections
About Voting Location	
<i>Example: Tulip Poplar High, 123 Main Street, County High School</i>	
Name	South KY RECC
Address	200 Electric Ave Somerset 42501
Type	Community Room
Number of Parking Spaces	Sufficient Parking Spaces?
111	Y
Voting Equipment to be Used	
Number	Type of equipment
2	Hart Intercivic Verity Scanners
1	Hart Intercivic Duo Standalone
3	Hart Intercivic Print

Precincts in Voting Location	
Precinct name	Number of registered voters
All	51,350

Narrative Plan <i>(please attach additional sheets if needed)</i>
<b>1.) Why is this consolidation of these precincts desirable?</b> <input type="checkbox"/> This is the same plan used in the last election
This is a modification of our last plan. We are increasing the equipment to suit the needs of the voting center.
<b>2.) In what manner will Precinct Officers be assigned?</b> <input checked="" type="checkbox"/> This location will be fully staffed with election officials
<b>3.) How will the voting location be publicized to voters? How will the location be noted as a "Vote Center?"</b>
All Locations are Vote Centers.
<b>4.) How will the voting location serve as a focal point to meet the needs of a diverse community?</b>



# Commonwealth of Kentucky

## Petition to Consolidate Precincts and Precinct Election Officers

<b>County Name</b>	
Pulaski	
<b>Election</b>	<b>Dates of Voting</b>
2024 General (Election Day )	11-5
<b>Person Completing this Form</b>	
Name	Mark Vaught
Title	Deputy Clerk-Elections
<b>About Voting Location</b>	
<i>Example: Tulip Poplar High, 123 Main Street, County High School</i>	
Name	Nancy Elementary Gym
Address	240 Hwy 196 Nancy 42544
Type	School Gymnasium
Number of Parking Spaces	Sufficient Parking Spaces?
103	Y
<b>Voting Equipment to be Used</b>	
<b>Number</b>	<b>Type of equipment</b>
2	Hart Intercivic Verity Scanners
1	Hart Intercivic Duo Standalone
2	Hart Intercivic Print

Precincts in Voting Location	
Precinct name	Number of registered voters
All	51,350

**Narrative Plan** *(please attach additional sheets if needed)*

**1.) Why is this consolidation of these precincts desirable?**  
 This is the same plan used in the last election

This is a modification of our last plan. We are increasing the equipment to suit the needs of the voting center.

**2.) In what manner will Precinct Officers be assigned?**  
 This location will be fully staffed with election officials

**3.) How will the voting location be publicized to voters? How will the location be noted as a "Vote Center?"**  
 All Locations are Vote Centers.

**4.) How will the voting location serve as a focal point to meet the needs of a diverse community?**



# Commonwealth of Kentucky

## Petition to Consolidate Precincts and Precinct Election Officers

<b>County Name</b>	
Pulaski	
<b>Election</b>	<b>Dates of Voting</b>
2024 General (Election Day)	11-5
<b>Person Completing this Form</b>	
Name	Mark Vaught
Title	Deputy Clerk-Elections
<b>About Voting Location</b>	
<i>Example: Tulip Poplar High, 123 Main Street, County High School</i>	
Name	Science Hill School
Address	6007 N Hwy 27 Science Hill 42553
Type	School
Number of Parking Spaces	Sufficient Parking Spaces?
77	Y
<b>Voting Equipment to be Used</b>	
<b>Number</b>	<b>Type of equipment</b>
2	Hart Intercivic Verity Scanners
1	Hart Intercivic Duo Standalone
2	Hart Intercivic Print

Precincts in Voting Location	
Precinct name	Number of registered voters
All	51,350

<b>Narrative Plan</b> <i>(please attach additional sheets if needed)</i>
<p><b>1.) Why is this consolidation of these precincts desirable?</b>  <input type="checkbox"/> This is the same plan used in the last election</p> <p>This is a modification of our last plan. We are increasing the equipment to suit the needs of the voting center.</p>
<p><b>2.) In what manner will Precinct Officers be assigned?</b>  <input checked="" type="checkbox"/> This location will be fully staffed with election officials</p>
<p><b>3.) How will the voting location be publicized to voters? How will the location be noted as a "Vote Center?"</b></p> <p>All Locations are Vote Centers.</p>
<p><b>4.) How will the voting location serve as a focal point to meet the needs of a diverse community?</b></p>



# Commonwealth of Kentucky

## Petition to Consolidate Precincts and Precinct Election Officers

County Name	
Pulaski	
Election	Dates of Voting
2024 General (Election Day)	11-5
Person Completing this Form	
Name	Mark Vaught
Title	Deputy Clerk-Elections
About Voting Location	
<i>Example: Tulip Poplar High, 123 Main Street, County High School</i>	
Name	Old Shopville Gym
Address	80 Shopville Rd
Type	Community Gym
Number of Parking Spaces	Sufficient Parking Spaces?
61	Y
Voting Equipment to be Used	
Number	Type of equipment
2	Hart Intercivic Verity Scanners
1	Hart Intercivic Duo Standalone
1	Hart Intercivic Print

Precincts in Voting Location	
Precinct name	Number of registered voters
All	51,350

Narrative Plan <i>(please attach additional sheets if needed)</i>
<p><b>1.) Why is this consolidation of these precincts desirable?</b></p> <p><input type="checkbox"/> This is the same plan used in the last election</p> <p>This is a modification of our last plan. We are increasing the equipment to suit the needs of the voting center.</p>
<p><b>2.) In what manner will Precinct Officers be assigned?</b></p> <p><input checked="" type="checkbox"/> This location will be fully staffed with election officials</p>
<p><b>3.) How will the voting location be publicized to voters? How will the location be noted as a "Vote Center?"</b></p> <p>All Locations are Vote Centers.</p>
<p><b>4.) How will the voting location serve as a focal point to meet the needs of a diverse community?</b></p>



# Commonwealth of Kentucky

## Petition to Consolidate Precincts and Precinct Election Officers

<b>County Name</b>	
Pulaski	
<b>Election</b>	<b>Dates of Voting</b>
2024 General (Election Day)	11-5
<b>Person Completing this Form</b>	
Name	Mark Vaught
Title	Deputy Clerk-Elections
<b>About Voting Location</b>	
<i>Example: Tulip Poplar High, 123 Main Street, County High School</i>	
Name	Jordan Christian Academy
Address	145 E Lakeshore Dr Burnside 42518
Type	Private School
Number of Parking Spaces	Sufficient Parking Spaces?
38	Y
<b>Voting Equipment to be Used</b>	
<b>Number</b>	<b>Type of equipment</b>
2	Hart Intercivic Verity Scanners
1	Hart Intercivic Duo Standalone
1	Hart Intercivic Print

Precincts in Voting Location	
Precinct name	Number of registered voters
All	51,350

<b>Narrative Plan</b> <i>(please attach additional sheets if needed)</i>
<p><b>1.) Why is this consolidation of these precincts desirable?</b></p> <p><input type="checkbox"/> This is the same plan used in the last election</p> <p>This is a modification of our last plan. We are increasing the equipment to suit the needs of the voting center.</p>
<p><b>2.) In what manner will Precinct Officers be assigned?</b></p> <p><input checked="" type="checkbox"/> This location will be fully staffed with election officials</p>
<p><b>3.) How will the voting location be publicized to voters? How will the location be noted as a "Vote Center?"</b></p> <p>All Locations are Vote Centers.</p>
<p><b>4.) How will the voting location serve as a focal point to meet the needs of a diverse community?</b></p>



# Commonwealth of Kentucky

## Petition to Consolidate Precincts and Precinct Election Officers

<b>County Name</b>	
Pulaski	
<b>Election</b>	<b>Dates of Voting</b>
2024 General (Election Day)	11-5
<b>Person Completing this Form</b>	
Name	Mark Vaught
Title	Deputy Clerk-Elections
<b>About Voting Location</b>	
<i>Example: Tulip Poplar High, 123 Main Street, County High School</i>	
Name	Oak Hill Baptist Church Gymnasium
Address	2135 Oak Hill Rd Somerset 42503
Type	Church Gymnasium
Number of Parking Spaces	Sufficient Parking Spaces?
192	Y
<b>Voting Equipment to be Used</b>	
<b>Number</b>	<b>Type of equipment</b>
2	Hart Intercivic Verity Scanners
1	Hart Intercivic Duo Standalone
2	Hart Intercivic Print

Precincts in Voting Location	
Precinct name	Number of registered voters
All	51,350

<b>Narrative Plan</b> <i>(please attach additional sheets if needed)</i>
<b>1.) Why is this consolidation of these precincts desirable?</b> <input type="checkbox"/> This is the same plan used in the last election This is a modification of our last plan. We are increasing the equipment to suit the needs of the voting center.
<b>2.) In what manner will Precinct Officers be assigned?</b> <input checked="" type="checkbox"/> This location will be fully staffed with election officials
<b>3.) How will the voting location be publicized to voters? How will the location be noted as a "Vote Center?"</b> All Locations are Vote Centers.
<b>4.) How will the voting location serve as a focal point to meet the needs of a diverse community?</b>



# Commonwealth of Kentucky

## Petition to Consolidate Precincts and Precinct Election Officers

County Name	
Pulaski	
Election	Dates of Voting
2024 General (Election Day)	11-5
Person Completing this Form	
Name	Mark Vaught
Title	Deputy Clerk-Elections
About Voting Location	
<i>Example: Tulip Poplar High, 123 Main Street, County High School</i>	
Name	Eubank Senior Citizens Center
Address	510 KY 70 Eubank 42567
Type	Senior Citizen Center
Number of Parking Spaces	Sufficient Parking Spaces?
77	Y
Voting Equipment to be Used	
Number	Type of equipment
2	Hart Intercivic Verity Scanners
1	Hart Intercivic Duo Standalone
1	Hart Intercivic Print

Precincts in Voting Location	
Precinct name	Number of registered voters
All	51,350

Narrative Plan <i>(please attach additional sheets if needed)</i>
<b>1.) Why is this consolidation of these precincts desirable?</b> <input type="checkbox"/> This is the same plan used in the last election  This is a modification of our last plan. We are increasing the equipment to suit the needs of the voting center.
<b>2.) In what manner will Precinct Officers be assigned?</b> <input checked="" type="checkbox"/> This location will be fully staffed with election officials
<b>3.) How will the voting location be publicized to voters? How will the location be noted as a "Vote Center?"</b>  All Locations are Vote Centers.
<b>4.) How will the voting location serve as a focal point to meet the needs of a diverse community?</b>



Pulaski County was formed in 1799. It is located in the Pennyrile region of the state. In 2023 the county population was estimated at 66,191 in a land area of 661 square miles, an average of 100.1 people per square mile. The county seat is Somerset.



Its population in 2023 was estimated to be 12,267 persons. There are four other incorporated cities in Pulaski County; Burnside (707) Science Hill, (714), Ferguson (827) and Eubank (325)

The county has 19 precincts, with 51,277 registered voters as of 06/2024.

There are 10,065 democrats, 36,529 republicans, and 4,683 designated as others.

Due to the size of the county and the disparity between the two parties, the County Board of Elections (CBE) wishes to remain with the voting centers rather return to the pre-pandemic precinct voting, due to the difficulties in sufficiently staffing the precincts.

We feel that the voting centers are better in that we have the best of the workers, and they are able to pool their knowledge to prevent the small mistakes that plague the elections every year. It also allows the precinct workers to vote the awaiting voters while handling the problem voters on the side.

The plan is to retain eight of the voting centers used in the 2024 primary. They are;

- 1) **The Hal Rogers Regional Fire Training Center,**
- 2) **Rocky Hollow Recreational Center,**
- 3) **South Kentucky RECC Community Room**
- 4) **Nancy Elementary Gymnasium**
- 5) **Science Hill Elementary Gymnasium**
- 6) **Old Shopville Gymnasium**
- 7) **Jordan Christian Academy**
- 8) **Oak Hill Church Gymnasium**

We are adding the 9) **The Senior Citizens Center in Eubank,**

We would like to have voting at three sites for all three days of no excuse period. They are  
**Early Voting Thursday 10-31 thru Saturday 11-2**

- 1) **Hal Rogers Regional Fire Training Center**
- 2) **Rocky Hollow Recreational Center**
- 3) **South Kentucky RECC Community Room.**

**Early Voting Saturday 11-2**

- 4) **Nancy Elementary Gymnasium**

**All locations will be voting centers**

The address of the voting centers are:

	Voting Center	Address	City
1	Hal Rogers Regional Fire Training Center	180 Oak Leaf Lane	Somerset, KY 42503
2	Rocky Hollow Recreational Center	420 S Central Avenue	Somerset, KY 42501
3	S KY RECC Community Room	200 Electric Avenue	Somerset, KY 42501
4	Nancy Elem Gymnasium	240 Hwy 196	Nancy, KY 42544
5	Science Hill School	6007 N Hwy 27	Science Hill, KY 42553
6	Old Shopville Gym	80 Shopville Rd	Somerset, KY 42503
7	Jordan Christian Academy	145 E Lakeshore Dr	Brunside, KY 42518
8	Oak Hill Church Gymnasium	2135 Oak Hill Rd	Somerset, KY 42503
9	Eubank Senior Citizen Center	510 KY 70	Eubank, KY 42567

The 6-day excused voting will be at the County Clerk’s Office at 100 N Main Street, Somerset, Kentucky, 42501

**All Location are Voting Centers**

We would like to have early voting on Thursday and Friday from 8:00 AM to 6:00 PM and Saturday from 8:00 AM to 4:00 PM.

		Thursday, October 31, 2024	Friday, November 1, 2024	Saturday, November 2, 2024	Sunday, November 3, 2024	Monday, November 4, 2024	Tuesday, November 5, 2024
1	H Rogers Fire Training Center 180 Oak Leaf Lane	◆	◆	◆			◆
2	Rocky Hollow Recreational Center 142 S Central Avenue	◆	◆	◆			◆
3	S KY RECC Community Room 200 Electric Avenue	◆	◆	◆			◆
4	Nancy Elementary Gym 240 Hwy 196 Nancy KY			◆			◆
5	Science Hill School 6007 N Hwy 27 Science Hill						◆
6	Old Shopville Gym 819 Mark Shopville Rd						◆
7	Oak Hill Church Gym 2135 Oak Hill Rd						◆
8	Jordan Christian Academy 145 Lakeshore Drive Burnside						◆
9	Eubank Senior Citizen Center						◆

The days that the specific location is open is marked with ◆

Thursday 10/31/2024 8:00 AM to 6 PM

Friday 11/1/2024 8:00 AM to 6 PM

Saturday 11/2/2024 8:00 AM to 4:00 PM

Tuesday Election Day 11/5/2024

6 AM to 6 PM

**All locations will be voting centers**

**The drop off boxes will be located at:**

**County Clerk's Office, 100 North Main Street, Somerset, Kentucky**

**MVL Branch, 124 N Main Street, Somerset, Kentucky**

**Grand Central Branch, 2821 S Hwy 27, Somerset, Kentucky**

# Map

## Clerks Office (6-day Voting) and Voting Centers 1, 2, 3, 7, & 8

County Clerk Office  
100 N Main Street  
6 day excused early voting

(1) H Rogers Regional Fire Training Center  
180 Oak Leaf Lane

(2) Rocky Hollow Recreational Center  
420 S Central Avenue

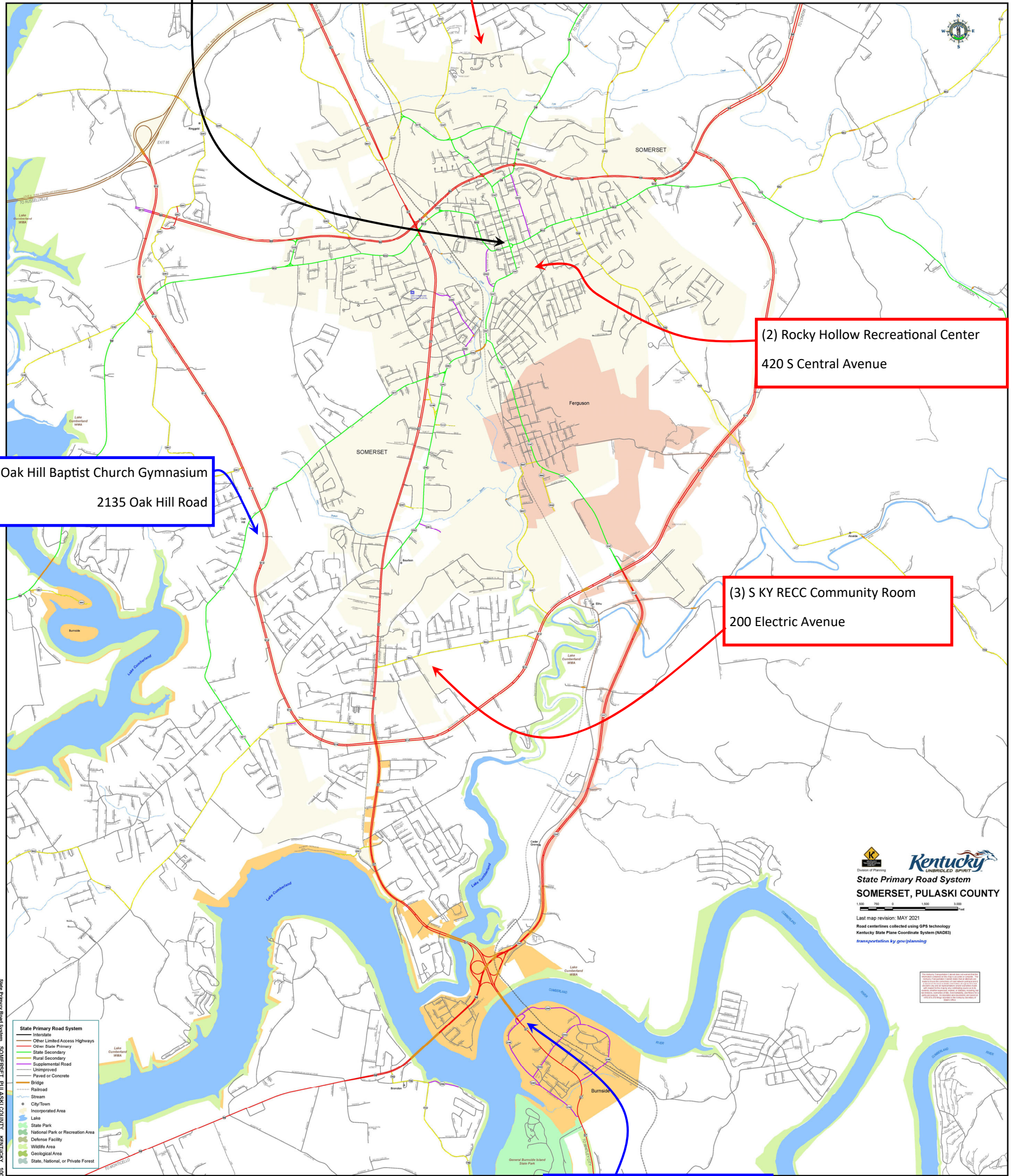
(8) Oak Hill Baptist Church Gymnasium  
2135 Oak Hill Road

(3) S KY RECC Community Room  
200 Electric Avenue

(7) Jordan Christian Academy  
145 E Lakeshore Drive

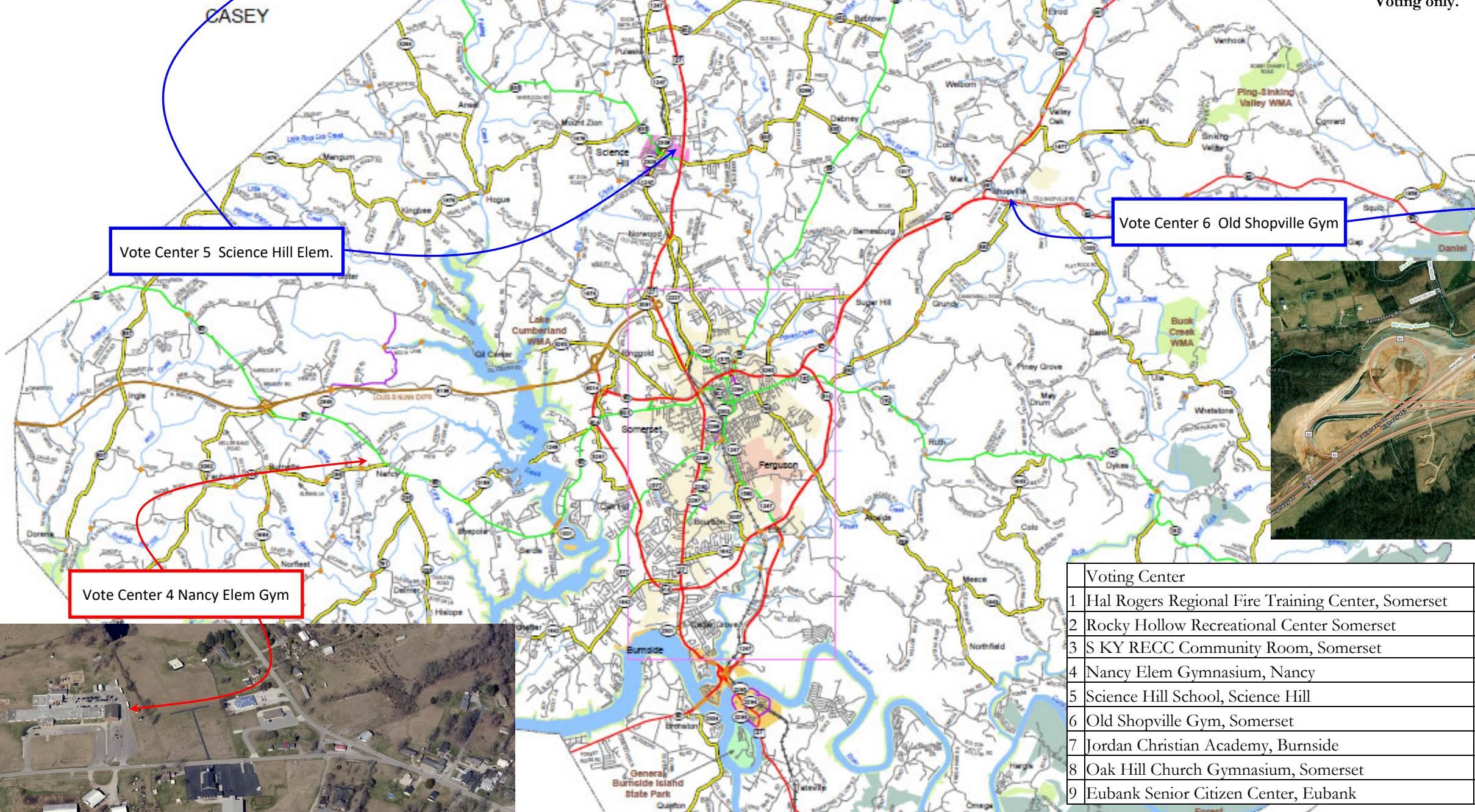
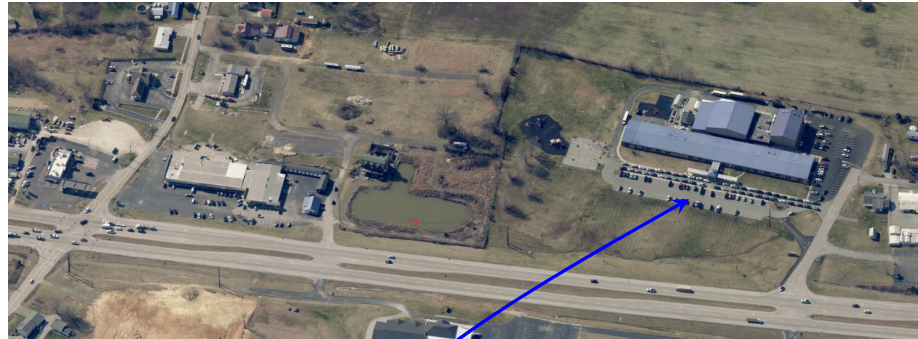
Those Vote Centers outlined in red are open for  
Early Voting and Election Day Voting

Those Vote Centers in blue are open for Election  
Day Only



# Map Voting Centers 4, 5, 6 & 9

## 2024 November General Election



Vote Center 9 Eubank Senior Citizen Center

Vote Center 5 Science Hill Elem.

Vote Center 6 Old Shopville Gym

Vote Center 4 Nancy Elem Gym

Those Voting Centers Outline in Red are open for Early Voting and Election Day Voting  
 Those Vote Center outline in Blue are open for Election Day Voting only.



Voting Center	Address	Early Voting	Election Day
1 Hal Rogers Regional Fire Training Center, Somerset	180 Oak Leaf Lane	X	X
2 Rocky Hollow Recreational Center Somerset	420 S Central Avenue	X	X
3 S KY RECC Community Room, Somerset	200 Electric Avenue	X	X
4 Nancy Elem Gymnasium, Nancy	240 Hwy 196	Saturday	X
5 Science Hill School, Science Hill	6007 N Hwy 27		X
6 Old Shopville Gym, Somerset	80 Shopville Rd		X
7 Jordan Christian Academy, Burnside	145 E Lakeshore Dr		X
8 Oak Hill Church Gymnasium, Somerset	2135 Oak Hill Rd		X
9 Eubank Senior Citizen Center, Eubank	510 KY 70		X