



# Commonwealth of Kentucky

## County Election Planning Report

<b>County Name</b>	
BULLITT	
<b>Election</b>	
PRIMARY ELECTION MAY 21 2024	
<b>Person Completing this Form</b>	
Name	KEVIN MOONEY
Title	COUNTY CLERK
Phone	502-543-2513 EXT #201

For in-person voting on Election Day, the County Board of Elections will (check one):

- Consolidate precincts and precinct election officers (Requires Form SBE 74);
- Utilize the same consolidation plan that was used in a previous election (Requires previous Form SBE 74); or
- Open all existing precincts.

Excused in-person absentee voting will occur (check one):

- Within the County Clerk's office; or
- In another location within the county (Requires Form SBE 74).

No-excuse in-person absentee voting will occur (check one):

- Within the County Clerk's office; or
- In another location within the county (Requires Form SBE 74).

Absentee ballot drop-boxes will be located (minimum of one location required):

149 N WALNUT ST SHEPHERDSVILLE, KY 40165

I have attached:

- All required Form SBE 74 sheets
- Relevant Maps
- Supplemental Narrative


  
 Signature \_\_\_\_\_ Date \_\_\_\_\_



# PQCC

Write a description for your map.

## Legend

📍 149 Walnut St

- AG
- B-1
- B-2
- C
- FN
- IG
- HL
- Nina Mooney Annex
- R-1
- R-2
- R-3
- R-4
- SPLIT
- SR







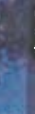


# MW 1ST BAPT

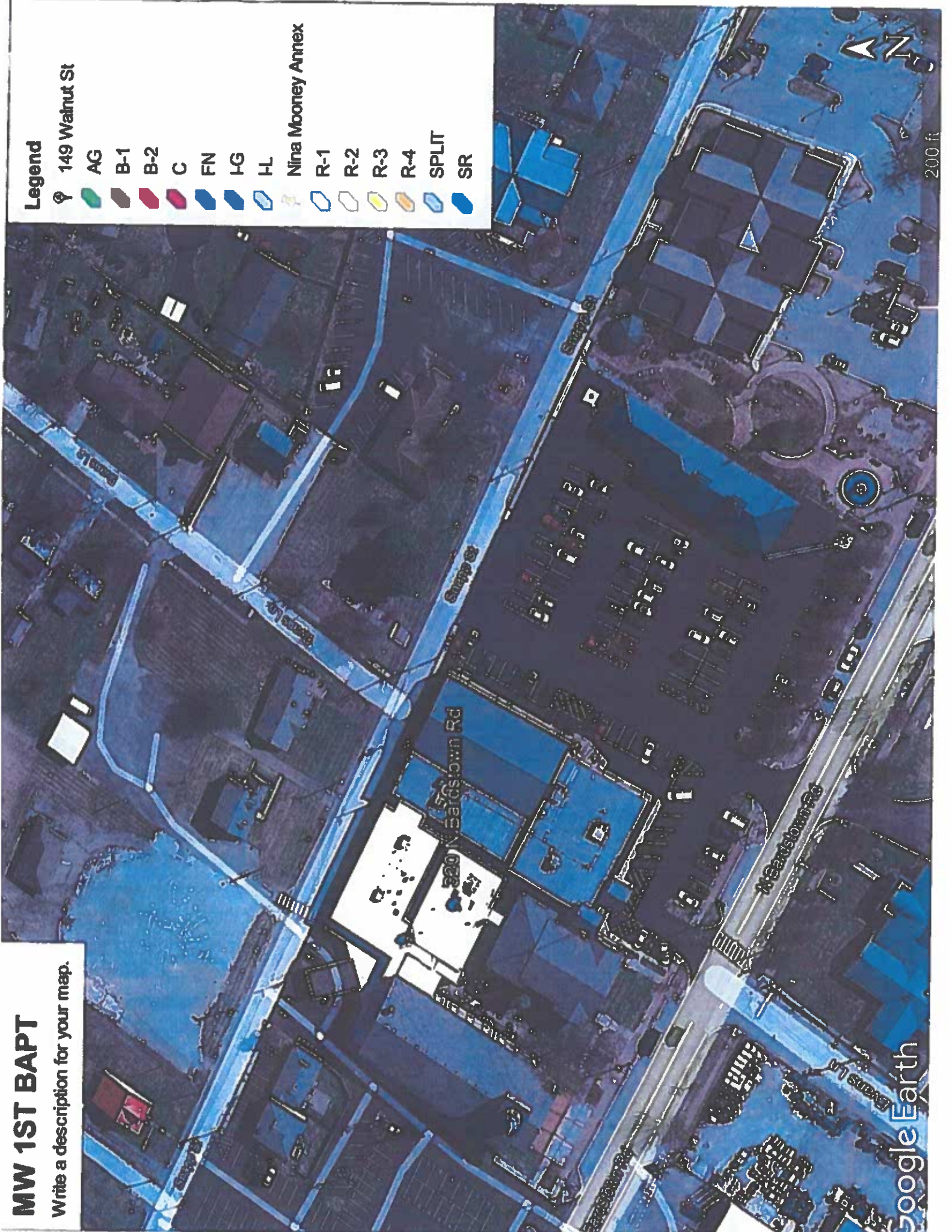
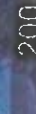
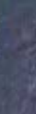
Write a description for your map.

## Legend

📍 149 Walnut St



Nina Mooney Annex









Prairie Dr



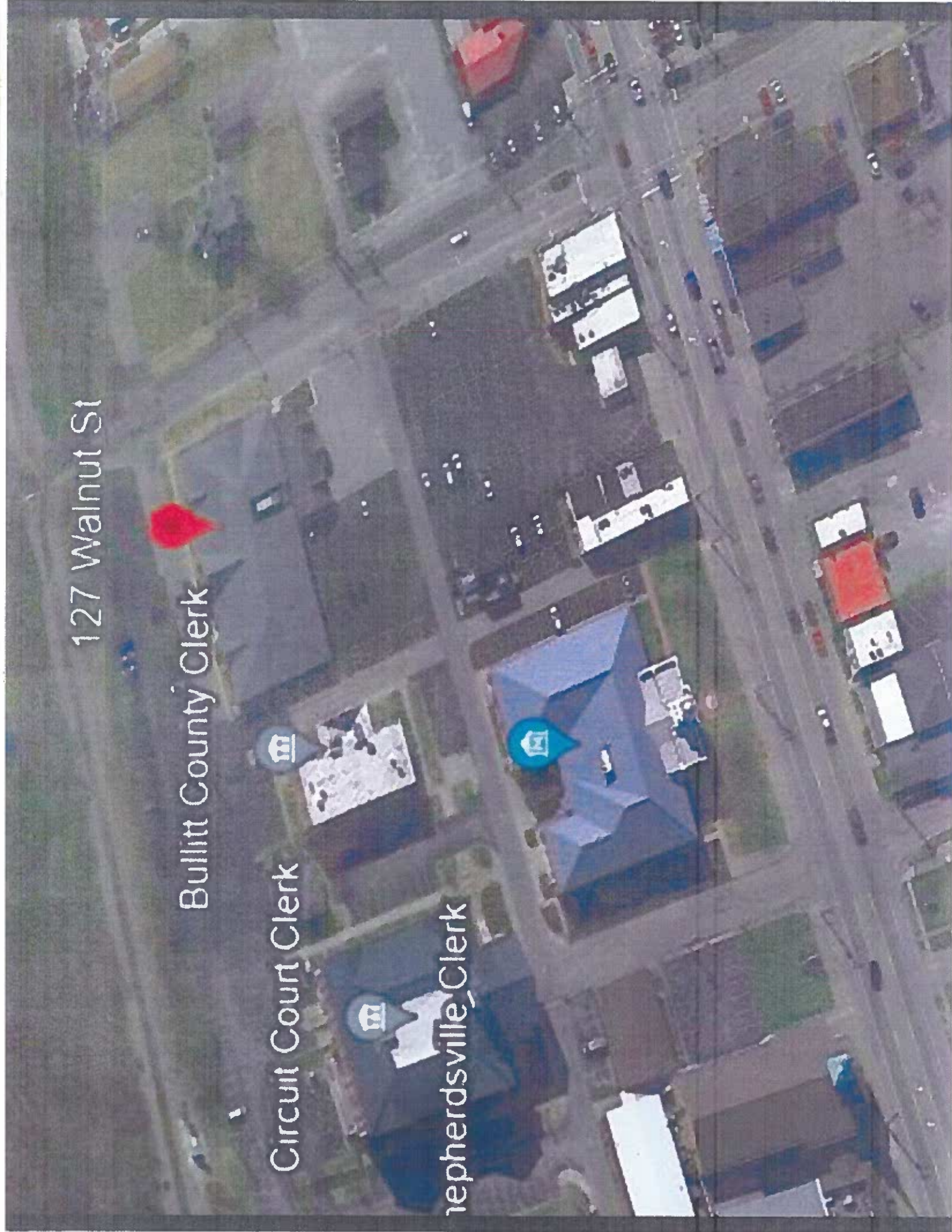


127 Walnut St

Bullitt County Clerk

Circuit Court Clerk

Shepherdsville Clerk





# Commonwealth of Kentucky

## Petition to Consolidate Precincts and Precinct Election Officers

<b>County Name</b>	
BULLITT	
<b>Election</b>	
PRIMARY 2024 MAY 21, 2024	
<b>Person Completing this Form</b>	
Name	KEVIN MOONEY
Title	COUNTY CLERK
<b>About Voting Location</b>	
<i>Example: Tulip Poplar High, 123 Main Street, County High School</i>	
Name	BULLITT CENTRAL HIGH SCHOOL
Address	1330 HWY 44 E SHEP, KY 40165
Type	HIGH SCHOOL GYM
Number of Parking Spaces	Sufficient Parking Spaces?
180+	YES
<b>Voting Equipment to be Used</b>	
Number	Type of equipment
5	EPB & VERITY PRINT
1	VERITY ADA DUO
3	VERITY SCANNERS

Precincts in Voting Location	
Precinct name	Number of registered voters
ALL PRECINCTS	63772
ELECTION DAY	

<b>Narrative Plan</b> <i>(please attach additional sheets if needed)</i>
<p><b>1.) Why is this consolidation of these precincts desirable?</b></p> <p><input checked="" type="checkbox"/> This is the same plan used in the last election</p> <p>THIS WILL ALLOW FOR INCREASED CUSTOMER SERVICE FOR ALL VOTERS IN BULLITT COUNTY, NO MATTER WHICH LOCATION THEY GO TO</p>
<p><b>2.) In what manner will Precinct Officers be assigned?</b></p> <p><input checked="" type="checkbox"/> This location will be fully staffed with election officials</p> <p>ASSIGNMENT WILL BASED ON CURRENT KRS (117.045) CLERK, SHERIFF, AND TWO JUDGES. BALANCE OF POLL WORKERS JOB TITLES ARE TBD</p>
<p><b>3.) How will the voting location be publicized to voters? How will the location be noted as a "Vote Center?"</b></p> <p>NEWSPAPER, WEBSITE, FACEBOOK, ETC</p>
<p><b>4.) How will the voting location serve as a focal point to meet the needs of a diverse community?</b></p> <p>OUR PLAN SERVES NORTH, SOUTH, EAST, WEST, AND CENTRAL EQUALLY ON ELECTION DAY. EARLY VOTING COVERS THE MAJORITY IF OUR POPULATION</p>



# BCHS

Write a description for your map.

## Legend

📍 149 Walnut St

AG

B-1

B-2

C

FN

IG

HL

Nina Mooney Annex

R-1

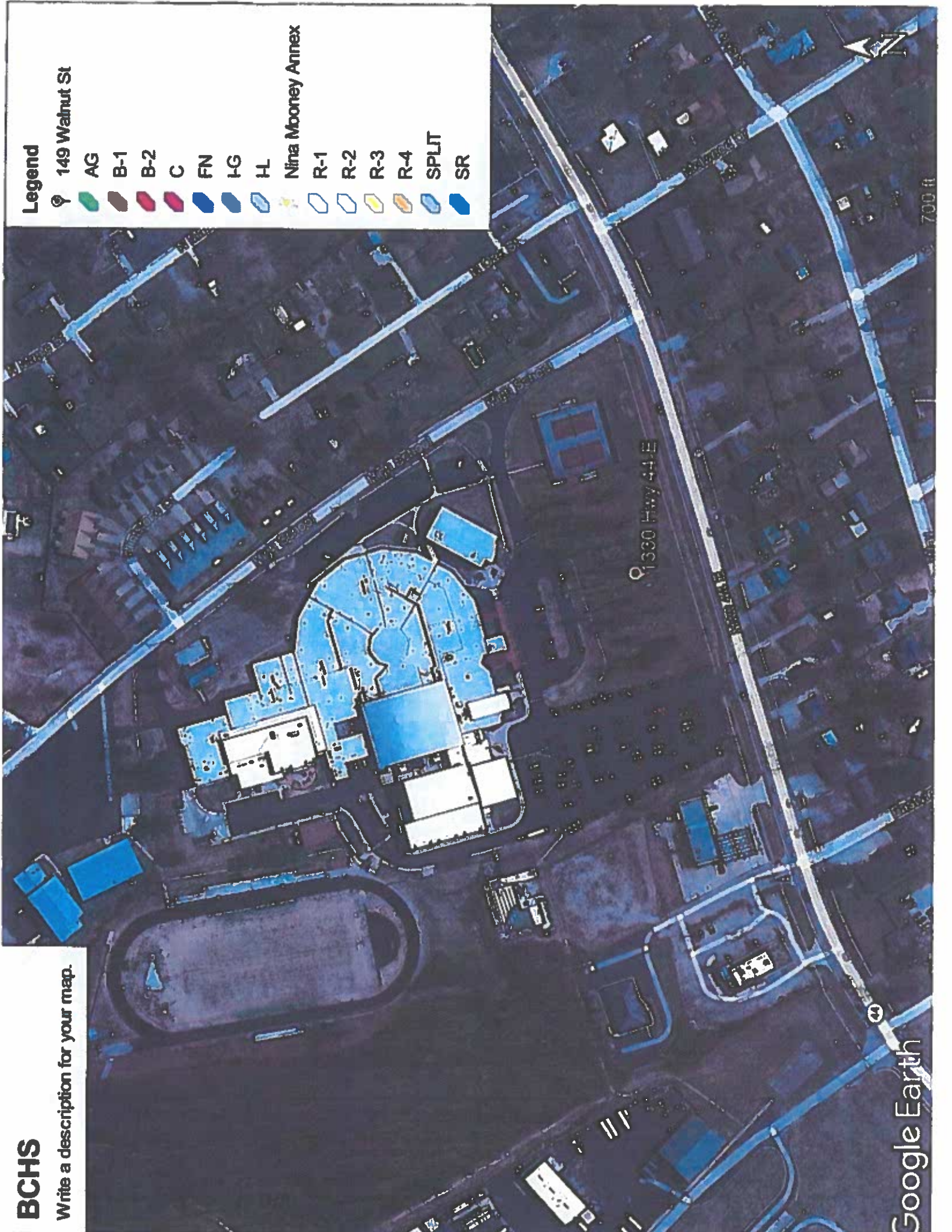
R-2

R-3

R-4

SPLIT

SR







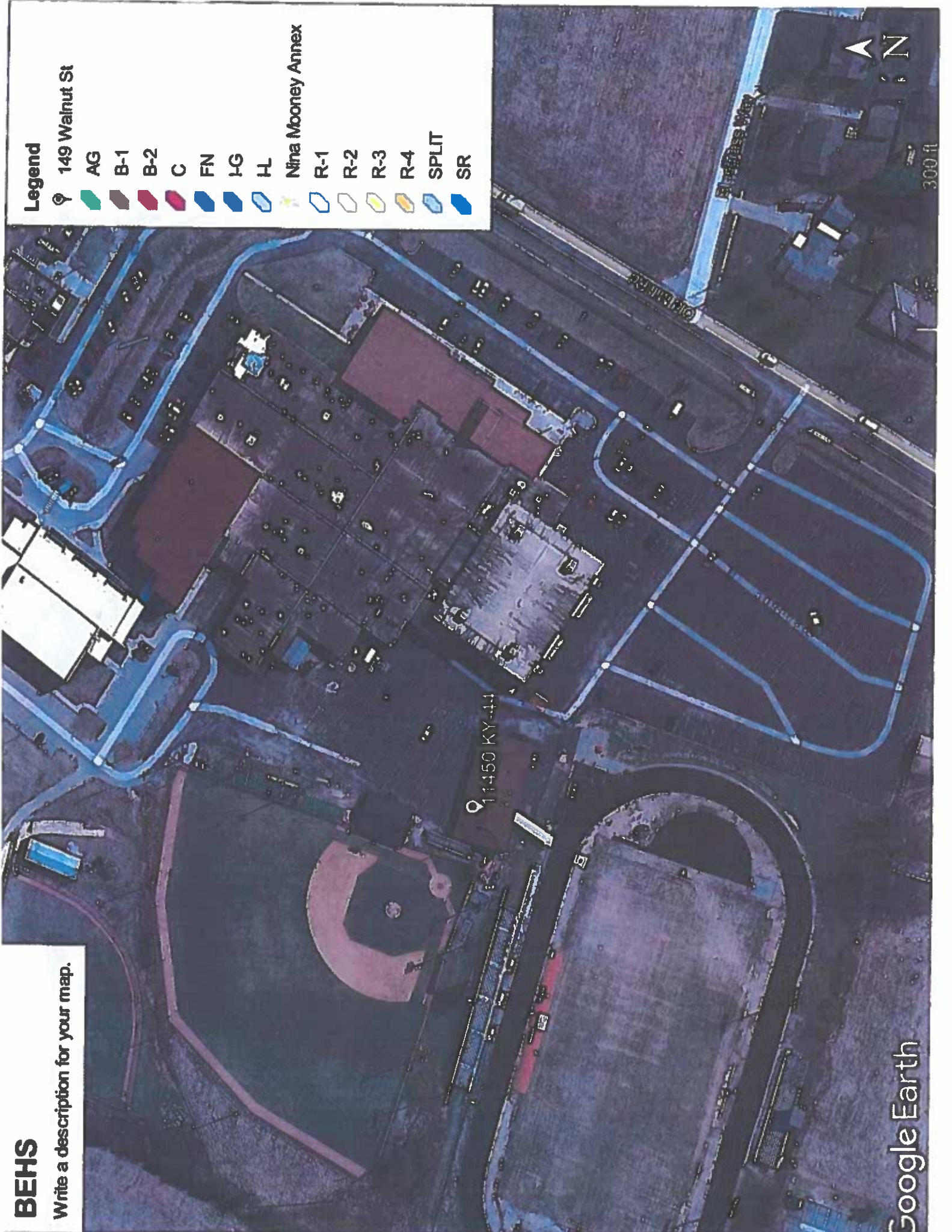
# BEHS

Write a description for your map.

## Legend

📍 149 Walnut St

- AG
- B-1
- B-2
- C
- FN
- IG
- H
- Nina Mooney Annex
- R-1
- R-2
- R-3
- R-4
- SPLIT
- SR





# Commonwealth of Kentucky

## Petition to Consolidate Precincts and Precinct Election Officers

County Name	
BULLITT	
Election	Dates of Voting
PRIMARY 2024 MAY 21, 2024	
Person Completing this Form	
Name	KEVIN MOONEY
Title	COUNTY CLERK
About Voting Location	
<i>Example: Tulip Poplar High, 123 Main Street, County High School</i>	
Name	NORTH BULLITT HIGH SCHOOL
Address	3200 E HEBRON LN SHEP, KY 40165
Type	HIGH SCHOOL GYM
Number of Parking Spaces	Sufficient Parking Spaces?
250+	YES
Voting Equipment to be Used	
Number	Type of equipment
10	EPB & VERITY PRINT
1	VERITY ADA DUO
4	VERITY SCANNERS

Precincts in Voting Location	
Precinct name	Number of registered voters
ALL PRECINCTS	63772
ELECTION DAY	

Narrative Plan <i>(please attach additional sheets if needed)</i>
<p><b>1.) Why is this consolidation of these precincts desirable?</b></p> <p><input checked="" type="checkbox"/> This is the same plan used in the last election</p> <p>THIS WILL ALLOW FOR INCREASED CUSTOMER SERVICE FOR ALL VOTERS IN BULLITT COUNTY, NO MATTER WHICH LOCATION THEY GO TO</p>
<p><b>2.) In what manner will Precinct Officers be assigned?</b></p> <p><input checked="" type="checkbox"/> This location will be fully staffed with election officials</p> <p>ASSIGNMENT WILL BASED ON CURRENT KRS (117.045) CLERK, SHERIFF, AND TWO JUDGES. BALANCE OF POLL WORKERS JOB TITLES ARE TBD</p>
<p><b>3.) How will the voting location be publicized to voters? How will the location be noted as a "Vote Center?"</b></p> <p>NEWSPAPER, WEBSITE, FACEBOOK, ETC</p>
<p><b>4.) How will the voting location serve as a focal point to meet the needs of a diverse community?</b></p> <p>OUR PLAN SERVES NORTH, SOUTH, EAST, WEST, AND CENTRAL EQUALLY ON ELECTION DAY. EARLY VOTING COVERS THE MAJORITY IF OUR POPULATION</p>



# NBHS

Write a description for your map.

## Legend

📍 149 Walnut St

AG

B-1

B-2

C

FN

IG

HL

Nina Mooney Annex

R-1

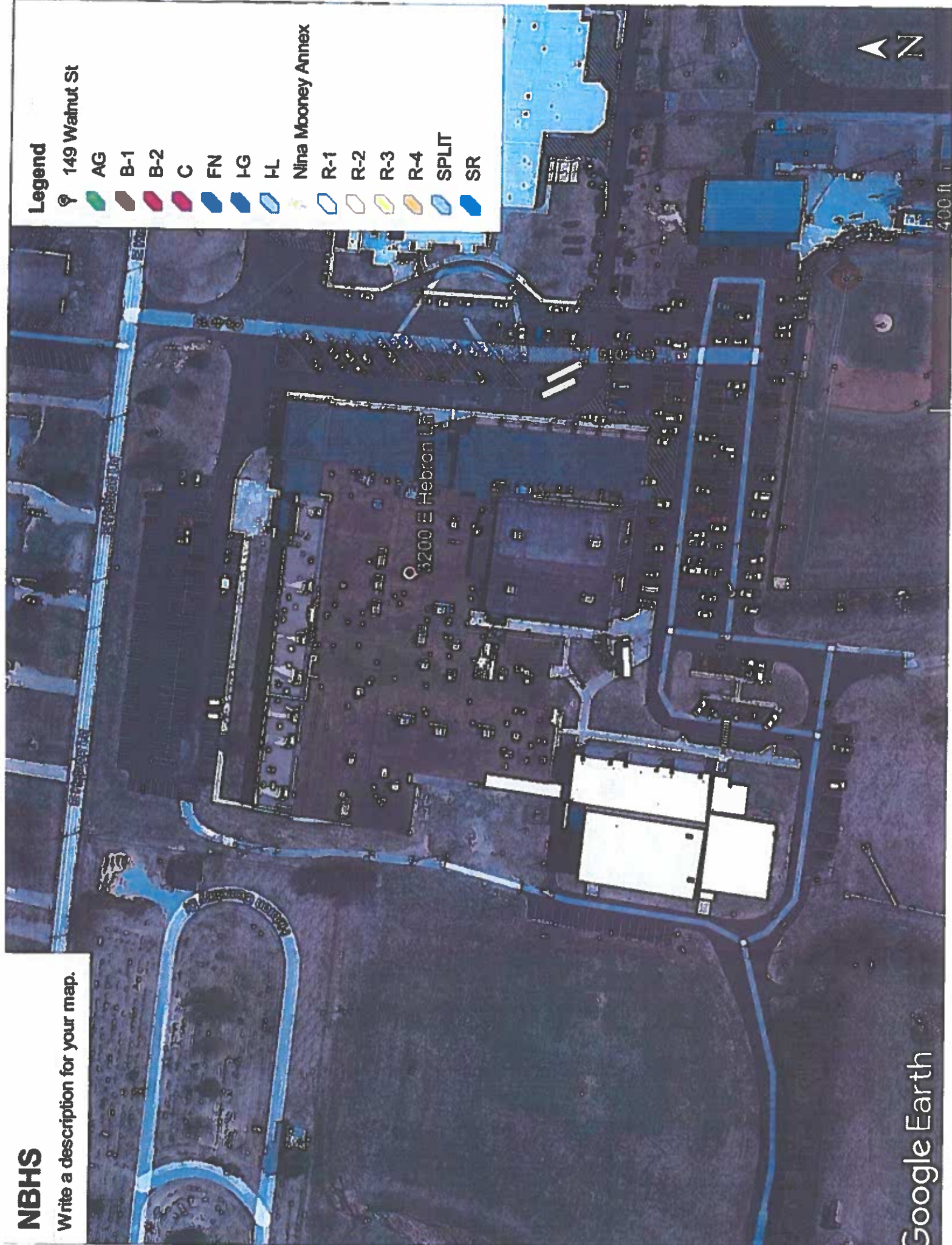
R-2

R-3

R-4

SPLIT

SR





# Commonwealth of Kentucky

## Petition to Consolidate Precincts and Precinct Election Officers

<b>County Name</b>	
BULLITT	
<b>Election</b>	<b>Dates of Voting</b>
PRIMARY 2024 MAY 21, 2024	
<b>Person Completing this Form</b>	
Name	KEVIN MOONEY
Title	COUNTY CLERK
<b>About Voting Location</b>	
<i>Example: Tulip Poplar High, 123 Main Street, County High School</i>	
Name	LEBANON JCT ELEM SCHOOL
Address	10920 S PRESTON HWY L.J. KY 40150
Type	SCHOOL GYM
Number of Parking Spaces	Sufficient Parking Spaces?
250+	YES
<b>Voting Equipment to be Used</b>	
<b>Number</b>	<b>Type of equipment</b>
2	EPB & VERITY PRINT
1	VERITY ADA DUO
2	VERITY SCANNERS

Precincts in Voting Location	
Precinct name	Number of registered voters
ALL PRECINCTS	63772
ELECTION DAY	

<b>Narrative Plan</b> <i>(please attach additional sheets if needed)</i>
<b>1.) Why is this consolidation of these precincts desirable?</b> <input checked="" type="checkbox"/> This is the same plan used in the last election  THIS WILL ALLOW FOR INCREASED CUSTOMER SERVICE FOR ALL VOTERS IN BULLITT COUNTY, NO MATTER WHICH LOCATION THEY GO TO
<b>2.) In what manner will Precinct Officers be assigned?</b> <input checked="" type="checkbox"/> This location will be fully staffed with election officials  ASSIGNMENT WILL BASED ON CURRENT KRS (117.045) CLERK, SHERIFF, AND TWO JUDGES. BALANCE OF POLL WORKERS JOB TITLES ARE TBD
<b>3.) How will the voting location be publicized to voters? How will the location be noted as a "Vote Center?"</b>  NEWSPAPER, WEBSITE, FACEBOOK, ETC
<b>4.) How will the voting location serve as a focal point to meet the needs of a diverse community?</b>  OUR PLAN SERVES NORTH, SOUTH, EAST, WEST, AND CENTRAL EQUALLY ON ELECTION DAY. EARLY VOTING COVERS THE MAJORITY IF OUR POPULATION



# LJES

Write a description for your map.

## Legend

📍 149 Walnut St

AG

B-1

B-2

C

FN

FG

HL

Nina Mooney Annex

R-1

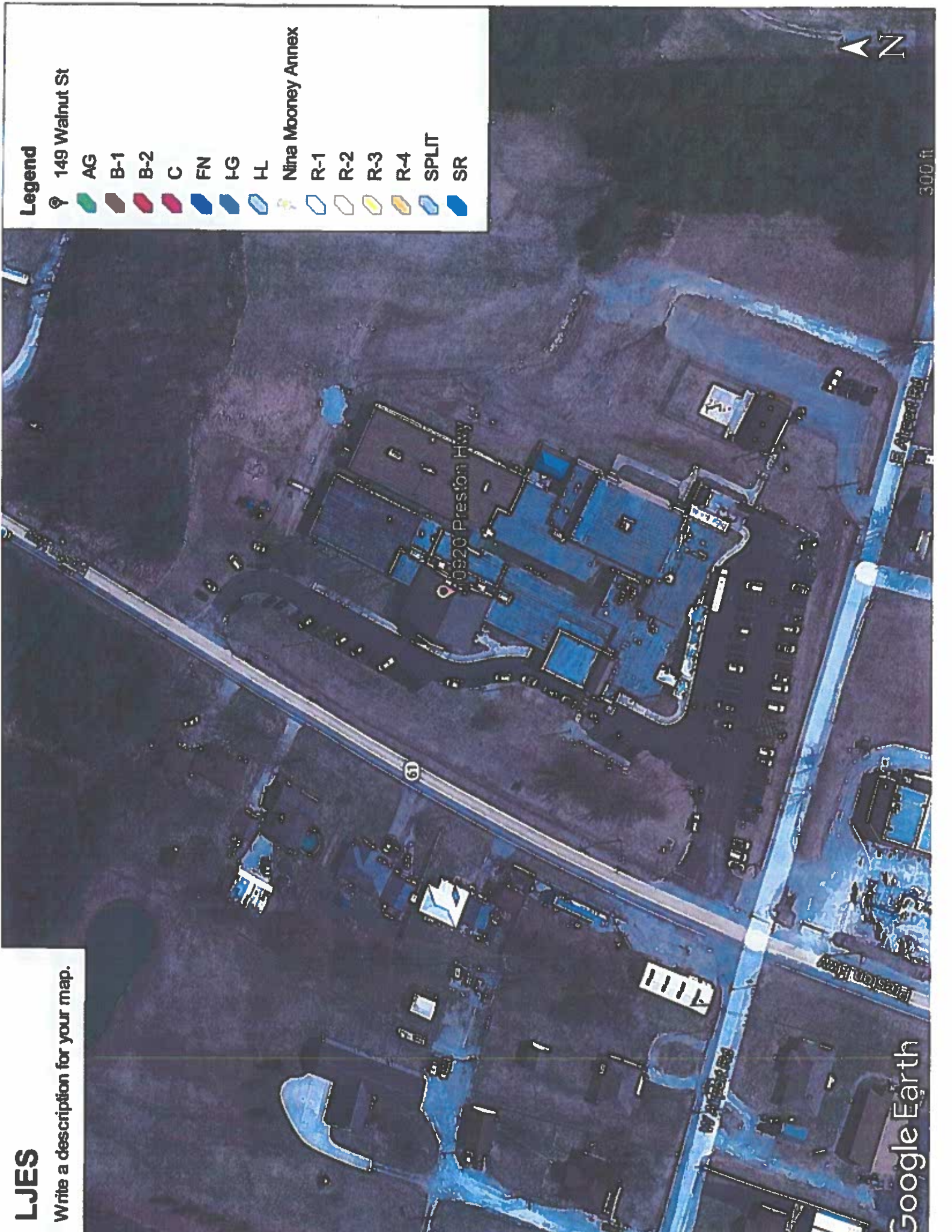
R-2

R-3

R-4

SPLIT

SR







# NES

Write a description for your map.

## Legend

📍 149 Walnut St

AG

B-1

B-2

C

FN

I-G

H-L

Nina Mooney Annex

R-1

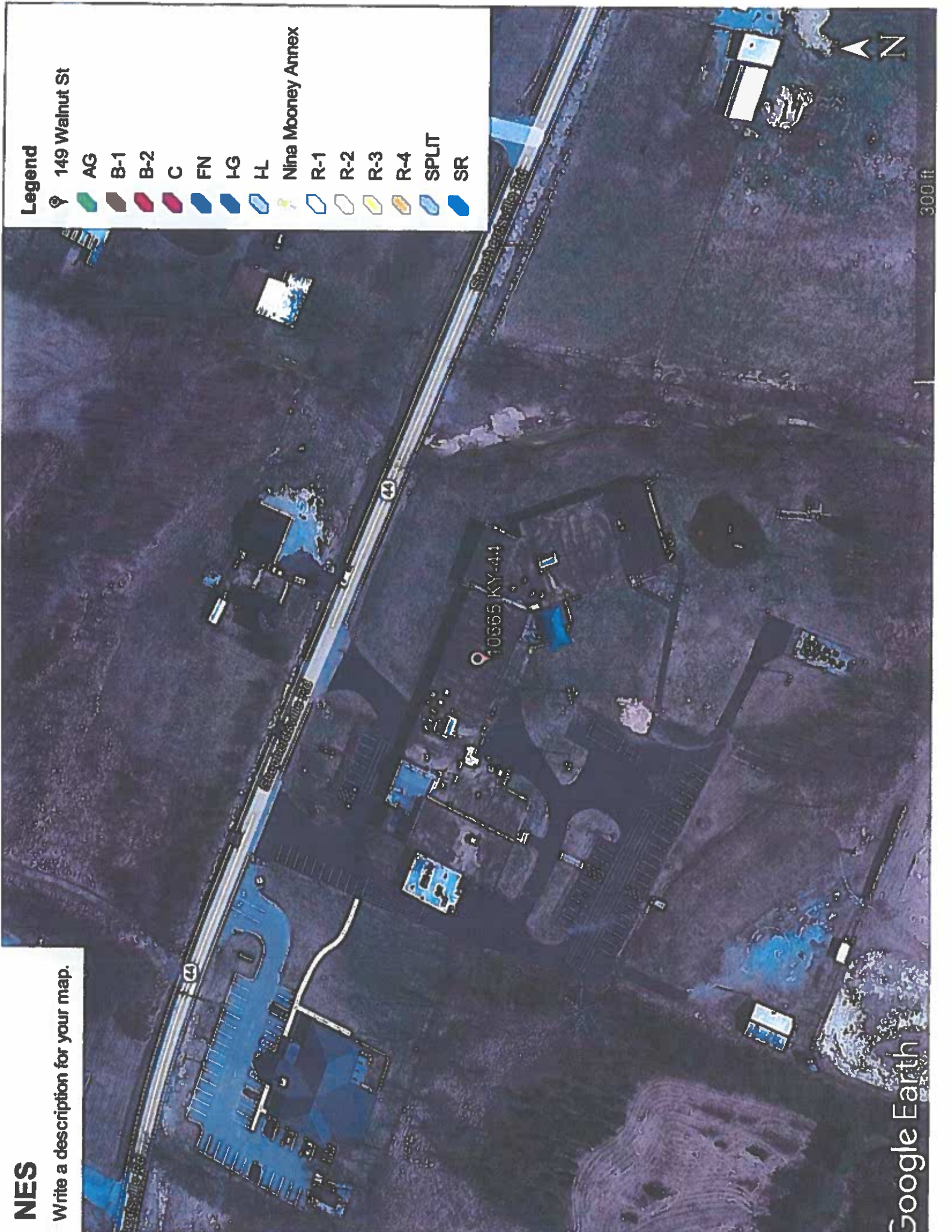
R-2

R-3

R-4

SPLIT

SR



# BOURBON TRAIL CORRIDOR

BULLITT COUNTY, KENTUCKY

*Highway City JESSE SCHOTT  
MEMORIAL BLDG  
248 PRAIRIE DR.*

BULLITT EAST HIGH SCHOOL  
11460 HIGHWAY 44 EAST

★

MT. WASHINGTON FIRST BAPTIST CHURCH  
320 N. BARDSTOWN RD

★

NORTH BULLITT HIGH SCHOOL  
3200 E. HEBRON

★

NICHOLS ELEMENTARY  
10665 HIGHWAY 44 WEST

★

BULLITT CENTRAL HIGH SCHOOL  
1330 HIGHWAY 44 EAST

★

NINAMOONEY ANNEX  
149 N. WALNUT

★

PAROQUET SPRINGS CONFERENCE CENTER  
395 PAROQUET SPRINGS

★

LEBANON JUNCTION ELEMENTARY  
10920 S. PRESTON HIGHWAY

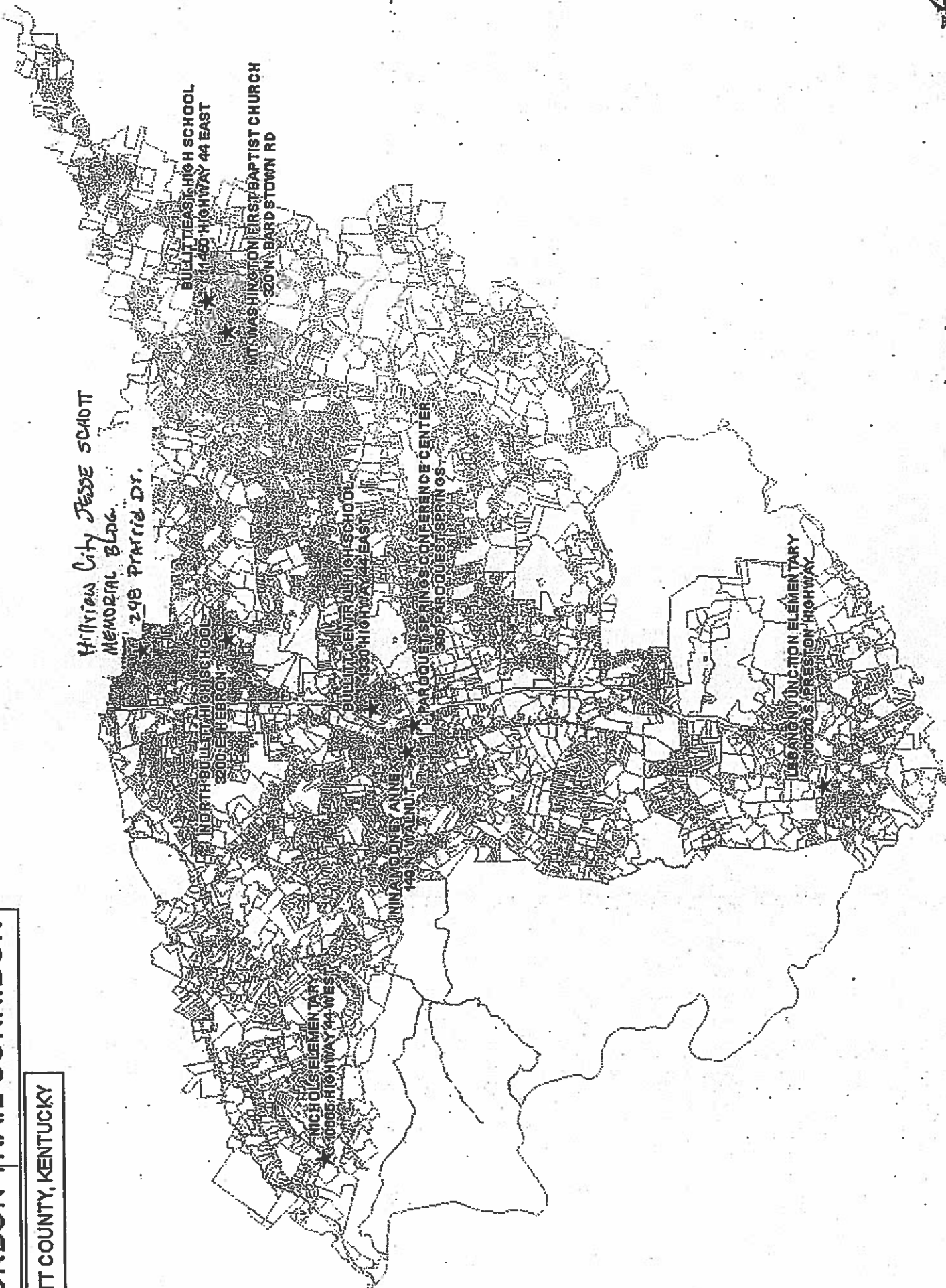
★





# OURBON TRAIL CORRIDOR

MILLITT COUNTY, KENTUCKY



Legend  
- - - - - Millitt County