



**Commonwealth of Kentucky
County Election Planning Report**

County Name	
KENTON	
Election	
2024 PRIMARY	
Person Completing this Form	
Name	Gabrielle Summe
Title	Kenton County Clerk
Phone	859-392-1660

For in-person voting on Election Day, the County Board of Elections will (check one):

- Consolidate precincts and precinct election officers (Requires Form SBE 74);
- Utilize the same plan that was used in a previous election (Requires current election dates on Form SBE 74); or
- Open all existing precincts.

Excused in-person absentee voting will occur (check one):

- Within the County Clerk's office; or
- In another location within the county (Requires Form SBE 74).

No-excuse in-person absentee voting will occur (check one):

- Within the County Clerk's office; or
- In another location within the county (Requires Form SBE 74).

Absentee ballot drop-boxes will be located (minimum of one location required):

Kenton County Gov't Center (inside and outside)- see SBE excel

Historic Independence Courthouse (inside and outside)-see SBE excel

I have attached:

- All required Form SBE 74 sheets
- Relevant Maps
- Any desired supplemental narrative

Gabrielle Summe

Signature

Date

Please email to CountyElectionPlans@ky.gov

Kenton County Election Commission

PO Box 1109 Covington, KY 41012

859-392-1620

www.kentoncountyclerk.com

*Gabrielle Summe
Chairman*

*Chuck Korzenborn
Sheriff*

*Bryce Rhoades
Democratic Party Rep*

*Scott Kimmich
Republican Party Rep*

February 14, 2024

State Board of Elections
140 Walnut Street
Frankfort, KY 40601

Dear All,

I am writing on behalf of the Kenton County Board of Elections for review and approval of the 2024 Primary Plan.

The County Board is submitting all necessary documents for review to the SBE. All the polling location information that is being submitted is still subject to review and approval of the DOJ's remediation plan. The County Board voted unanimously for approval of the plan on February 12, 2024.

1. County Election Planning Report
2. SBE 74 OF LOCATION-a series of e-mails will be sent with .pdf
3. Map of locations. Best seen on https://linkgis.org/mapviewer_voting/
4. Excel of drop box locations
5. Excel of pending polling locations
6. Ballot Matrix for state codes and precinct names

Drop Boxes- four (4) drop boxes located in two locations.

Inside & outside at Kenton Co Gov't Center, 1840 Simon Kenton Way, Cov.

Inside & outside at Historic Independence Courthouse, 5272 Madison Pike, Ind.

Precincts- There are 72 precincts with Democratic and Republican presidential primary candidates as well as a primary for the US Representative, State Senator, State Representatives and the City of Covington Commission. This will result in 165 ballot faces.

Early Voting Locations- Five (5) early voting locations that will function as voting centers which allows a voter to go to any location to receive their precinct specific ballot. This is accomplished with using a Ballot on Demand printing system as well as the ES&S Express Vote. The Express Vote is essentially a ballot on demand system that has all the precinct specific ballots available.

Election Day Locations- There are thirty-eight (38) polling locations. Election day locations are listed as consolidated locations per definition of the SBE but are actually VOTING CENTERS. Kenton County assigns precincts to specific locations for distribution of pre-printed ballots, but a voter can choose to go to any location on Election Day as long as they are willing to use the Express Vote. The Express Vote is programed with all possible ballot styes and the DS200 is programmed to accept all possible ballot styles. The five early voting centers with the Ballot on Demand also are available on Election Day and this helps give voters more choices.

This Election Plan gives all voters, especially those with accessibility issues, more flexibility to choose the location most convenient for them. It also ensures that if a voter goes to the wrong location, or has moved, we do not have to redirect them to a different physical location.

Board's basic rule for manning each location is as follows:

- Two (2) judges per location
- Two (2) sheriffs per location
- One (1) clerk per thousand assigned voters with a two (2) clerk minimum.

Due to the DOJ agreement, the Board is required to have Election Day Surveyors (EDS) to review all the locations for 6-days of voting, three (3) days of early voting and the 38 locations on Election Day. We had four (4) EDS for 2023 Primary but with the increase in locations, we will likely have to add two (2) EDS. These people are paid for the day as well as their mileage.

Board's basic rule for equipment for each location is as follows.

- One E-poll book and printer per clerk assigned to the location.
- One (1) DS200 scanner per 4,000 assigned voters since that is their ballot capacity.
- One (1) Express per thousand assigned voters.
- Not sure how many parking spots are considered sufficient.

Past, current, and future polling locations must be reviewed by the Department of Justice (DOJ). Once there is approval by the DOJ, these locations can be:

1. Added to the location roster for Kenton County
2. Surveys can be added to SOS website.
3. Surveys can be added to the VRS.
4. Voter can be updated in VRS on their assigned polling location.
5. Voters can be notified as to their new assigned polling location.

Sincerely,

Gabrielle Summe
Kenton County Clerk
Chairman, Kenton Board of Elections



Commonwealth of Kentucky

Petition to Consolidate Precincts and Precinct Election Officers

County Name	
Kenton	
Election	
Primary	
Dates of Voting	
5/21/24	
Person Completing this Form	
Name	GABRIELLE SUMME
Title	KENTON COUNTY CLERK
About Voting Location	
<i>Example: Tulip Poplar High, 123 Main Street, County High School</i>	
Name	INDEPENDENCE SENIOR CENTER
Address	2001 Jackwoods Parkway, Ind
Type	EARLY VOTING
Number of Parking Spaces	Sufficient Parking Spaces?
162	YES
Voting Equipment to be Used	
Number	Type of equipment
3	DS200 SCANNERS
10	EXPRESS VOTE BALLOT MARKERS
4	E-POLL BOOKS

Precincts in Voting Location	
Precinct name	Number of registered voters
ALL	

Narrative Plan *(please attach additional sheets if needed)*

1.) Why is this consolidation of these precincts desirable?
 This is the same plan used in the last election

Pre-printed ballots will be available to those in the specific precincts listed above but if the voter is willing to use the Express Vote Ballot Marker then they can vote at any location on Election Day.

2.) In what manner will Precinct Officers be assigned?
 This location will be fully staffed with election officials

Judges: 2	Troubleshooter: 1
Clerks: 4	TOTAL # OF WORKERS: 9
Sheriffs: 2	

3.) How will the voting location be publicized to voters? How will the location be noted as a "Vote Center?"

On website, newspaper advertising, direct mail postcards.

4.) How will the voting location serve as a focal point to meet the needs of a diverse community?

The goal is for each city to have a location to vote. Some cities will have more than one location because of geography, size or transportation needs. The 5 early voting locations will have print on demand ballots so if a voter goes to the wrong location they can still vote.



Commonwealth of Kentucky

Petition to Consolidate Precincts and Precinct Election Officers

County Name	
Kenton	
Election	Dates of Voting
Primary	5/21/24
Person Completing this Form	
Name	GABRIELLE SUMME
Title	KENTON COUNTY CLERK
About Voting Location	
<i>Example: Tulip Poplar High, 123 Main Street, County High School</i>	
Name	EV - CALVARY STUDENT LIFE CENTER
Address	3711 Tibbatts, Covington
Type	EARLY VOTING
Number of Parking Spaces	Sufficient Parking Spaces?
226	YES
Voting Equipment to be Used	
Number	Type of equipment
2	DS200 SCANNERS
10	EXPRESS VOTE BALLOT MARKERS
4	E-POLL BOOKS

Precincts in Voting Location	
Precinct name	Number of registered voters
ALL	

Narrative Plan <i>(please attach additional sheets if needed)</i>
1.) Why is this consolidation of these precincts desirable? <input type="checkbox"/> This is the same plan used in the last election
This is how the 2020 General Election was set up as well as prior elections. We can use less equipment and the equipment we used can be used to its best advantage.
2.) In what manner will Precinct Officers be assigned? <input type="checkbox"/> This location will be fully staffed with election officials
Judges: 2 Clerks: 4 Sheriffs: 2 Troubleshooter: 1 TOTAL # OF WORKERS: 9
3.) How will the voting location be publicized to voters? How will the location be noted as a "Vote Center?"
On website, newspaper advertising, direct mail postcards.
4.) How will the voting location serve as a focal point to meet the needs of a diverse community?
The goal is for each city to have a location to vote. Some cities will have more than one location because of geography, size or transportation needs. The 5 early voting locations will have print on demand ballots so if a voter goes to the wrong location they can still vote.



Commonwealth of Kentucky

Petition to Consolidate Precincts and Precinct Election Officers

County Name	
Kenton	
Election	Dates of Voting
Primary	5/21/24
Person Completing this Form	
Name	GABRIELLE SUMME
Title	KENTON COUNTY CLERK
About Voting Location <i>Example: Tulip Poplar High, 123 Main Street, County High School</i>	
Name	KENTON GOV'T BLDG
Address	1840 Simon Kenton Way, Covington
Type	EARLY VOTING
Number of Parking Spaces	Sufficient Parking Spaces?
132	YES
Voting Equipment to be Used	
Number	Type of equipment
2	DS200 SCANNERS
4	EXPRESS VOTE BALLOT MARKERS
2	E-POLL BOOKS

Precincts in Voting Location	
Precinct name	Number of registered voters
ALL	

Narrative Plan <i>(please attach additional sheets if needed)</i>
1.) Why is this consolidation of these precincts desirable? <input type="checkbox"/> This is the same plan used in the last election
Pre-printed ballots will be available to those in the specific precincts listed above but if the voter is willing to use the Express Vote Ballot Marker then they can vote at any location on Election Day.
2.) In what manner will Precinct Officers be assigned? <input type="checkbox"/> This location will be fully staffed with election officials
Judges: 2 Clerks: 1 Sheriffs: 1 Troubleshooter: 1 TOTAL # OF WORKERS: 5
3.) How will the voting location be publicized to voters? How will the location be noted as a "Vote Center?"
On website, newspaper advertising, direct mail postcards.
4.) How will the voting location serve as a focal point to meet the needs of a diverse community?
The goal is for each city to have a location to vote. Some cities will have more than one location because of geography, size or transportation needs. The 5 early voting locations will have print on demand ballots so if a voter goes to the wrong location they can still vote.



Commonwealth of Kentucky

Petition to Consolidate Precincts and Precinct Election Officers

County Name	
Kenton	
Election	Dates of Voting
Primary	5/21/24
Person Completing this Form	
Name	GABRIELLE SUMME
Title	KENTON COUNTY CLERK
About Voting Location	
<i>Example: Tulip Poplar High, 123 Main Street, County High School</i>	
Name	LAKESIDE CHRISTIAN CHURCH
Address	195 Buttermilk Pk, Lakeside Park
Type	EARLY VOTING
Number of Parking Spaces	Sufficient Parking Spaces?
339	YES
Voting Equipment to be Used	
Number	Type of equipment
3	DS200 SCANNERS
10	EXPRESS VOTE BALLOT MARKERS
4	E-POLL BOOKS

Precincts in Voting Location	
Precinct name	Number of registered voters
ALL	

Narrative Plan <i>(please attach additional sheets if needed)</i>	
1.) Why is this consolidation of these precincts desirable? <input type="checkbox"/> This is the same plan used in the last election This is how the 2020 General Election was set up as well as prior elections. We can use less equipment and the equipment we used can be used to its best advantage.	
2.) In what manner will Precinct Officers be assigned? <input type="checkbox"/> This location will be fully staffed with election officials Judges: 2 Clerks: 4 Sheriffs: 2 Troubleshooter: 1 TOTAL # OF WORKERS: 9	
3.) How will the voting location be publicized to voters? How will the location be noted as a "Vote Center?" On website, newspaper advertising, direct mail postcards.	
4.) How will the voting location serve as a focal point to meet the needs of a diverse community? The goal is for each city to have a location to vote. Some cities will have more than one location because of geography, size or transportation needs. The 5 early voting locations will have print on demand ballots so if a voter goes to the wrong location they can still vote.	



Commonwealth of Kentucky

Petition to Consolidate Precincts and Precinct Election Officers

County Name	
Kenton	
Election	Dates of Voting
Primary	5/21/24
Person Completing this Form	
Name	GABRIELLE SUMME
Title	KENTON COUNTY CLERK
About Voting Location <i>Example: Tulip Poplar High, 123 Main Street, County High School</i>	
Name	CALVARY STUDENT LIFE CENTER-BOD
Address	3708 Tibbatts St, COVINGTON
Type	ELECTION DAY
Number of Parking Spaces	Sufficient Parking Spaces?
226	YES
Voting Equipment to be Used	
Number	Type of equipment
2	DS200 SCANNERS
10	EXPRESS VOTE BALLOT MARKERS
4	E-POLL BOOKS

Precincts in Voting Location	
Precinct name	Number of registered voters
A114 COV #13	1983
B203 COV #15	1193
A121 KENTON VAL	89

Narrative Plan (please attach additional sheets if needed)	
1.) Why is this consolidation of these precincts desirable? <input type="checkbox"/> This is the same plan used in the last election	
Pre-printed ballots will be available to those in the specific precincts listed above but if the voter is willing to use the Express Vote Ballot Marker then they can vote at any location on Election Day.	
2.) In what manner will Precinct Officers be assigned? <input type="checkbox"/> This location will be fully staffed with election officials	
Judges: 2	Troubleshooter: 1
Clerks: 4	TOTAL # OF WORKERS: 9
Sheriffs: 2	
3.) How will the voting location be publicized to voters? How will the location be noted as a "Vote Center?"	
On website, newspaper advertising, direct mail postcards.	
4.) How will the voting location serve as a focal point to meet the needs of a diverse community?	
The goal is for each city to have a location to vote. Some cities will have more than one location because of geography, size or transportation needs. The 5 early voting locations will have print on demand ballots so if a voter goes to the wrong location they can still vote.	



Commonwealth of Kentucky

Petition to Consolidate Precincts and Precinct Election Officers

County Name	
Kenton	
Election	Dates of Voting
Primary	5/21/24
Person Completing this Form	
Name	GABRIELLE SUMME
Title	KENTON COUNTY CLERK
About Voting Location	
<i>Example: Tulip Poplar High, 123 Main Street, County High School</i>	
Name	CRESCENT SPRINGS CITY BLDG
Address	739 BUTTERMILK PK, CRESCENT SPRINGS
Type	ELECTION DAY
Number of Parking Spaces	Sufficient Parking Spaces?
39	YES
Voting Equipment to be Used	
Number	Type of equipment
1	DS200 SCANNERS
4	EXPRESS VOTE BALLOT MARKERS
2	E-POLL BOOKS

Precincts in Voting Location	
Precinct name	Number of registered voters
C301 CSP	2594

Narrative Plan (please attach additional sheets if needed)
<p>1.) Why is this consolidation of these precincts desirable? <input type="checkbox"/> This is the same plan used in the last election</p> <p>Pre-printed ballots will be available to those in the specific precincts listed above but if the voter is willing to use the Express Vote Ballot Marker then they can vote at any location on Election Day.</p>
<p>2.) In what manner will Precinct Officers be assigned? <input type="checkbox"/> This location will be fully staffed with election officials</p> <p>Judges: 2 Clerks: 2 Sheriffs: 1</p> <p>Troubleshooter: 1 TOTAL # OF WORKERS: 6</p>
<p>3.) How will the voting location be publicized to voters? How will the location be noted as a "Vote Center?"</p> <p>On website, newspaper advertising, direct mail postcards.</p>
<p>4.) How will the voting location serve as a focal point to meet the needs of a diverse community?</p> <p>The goal is for each city to have a location to vote. Some cities will have more than one location because of geography, size or transportation needs. The 5 early voting locations will have print on demand ballots so if a voter goes to the wrong location they can still vote.</p>



Commonwealth of Kentucky

Petition to Consolidate Precincts and Precinct Election Officers

County Name	
Kenton	
Election	Dates of Voting
Primary	5/21/24
Person Completing this Form	
Name	GABRIELLE SUMME
Title	KENTON COUNTY CLERK
About Voting Location	
<i>Example: Tulip Poplar High, 123 Main Street, County High School</i>	
Name	DEVOU GOLF & EVENT CENTER
Address	1201 PARK DR, COVINGTON
Type	ELECTION DAY
Number of Parking Spaces	Sufficient Parking Spaces?
96	YES
Voting Equipment to be Used	
Number	Type of equipment
1	DS200 SCANNERS
4	EXPRESS VOTE BALLOT MARKERS
2	E-POLL BOOKS

Precincts in Voting Location	
Precinct name	Number of registered voters
A104 COV #3	2083

Narrative Plan <i>(please attach additional sheets if needed)</i>	
1.) Why is this consolidation of these precincts desirable?	
<input type="checkbox"/> This is the same plan used in the last election	
Pre-printed ballots will be available to those in the specific precincts listed above but if the voter is willing to use the Express Vote Ballot Marker then they can vote at any location on Election Day.	
2.) In what manner will Precinct Officers be assigned?	
<input type="checkbox"/> This location will be fully staffed with election officials	
Judges: 2	Troubleshooter: 1
Clerks: 2	TOTAL # OF WORKERS: 6
Sheriffs: 1	
3.) How will the voting location be publicized to voters? How will the location be noted as a "Vote Center?"	
On website, newspaper advertising, direct mail postcards.	
4.) How will the voting location serve as a focal point to meet the needs of a diverse community?	
The goal is for each city to have a location to vote. Some cities will have more than one location because of geography, size or transportation needs. The 5 early voting locations will have print on demand ballots so if a voter goes to the wrong location they can still vote.	



Commonwealth of Kentucky

Petition to Consolidate Precincts and Precinct Election Officers

County Name	
Kenton	
Election	Dates of Voting
Primary	5/21/24
Person Completing this Form	
Name	GABRIELLE SUMME
Title	KENTON COUNTY CLERK
About Voting Location	
<i>Example: Tulip Poplar High, 123 Main Street, County High School</i>	
Name	DIETZ AUDITORIUM (LLOYD HIGH SCHOOL)
Address	450 BARTLETT AVE, ERLANGER
Type	ELECTION DAY
Number of Parking Spaces	Sufficient Parking Spaces?
130	YES
Voting Equipment to be Used	
Number	Type of equipment
2	DS200 SCANNERS
8	EXPRESS VOTE BALLOT MARKERS
6	E-POLL BOOKS

Precincts in Voting Location	
Precinct name	Number of registered voters
C312 ERL #1	2645
C315 ERL #4	3530
C322 ERL #1.5	66

Narrative Plan <i>(please attach additional sheets if needed)</i>
1.) Why is this consolidation of these precincts desirable? <input type="checkbox"/> This is the same plan used in the last election
Pre-printed ballots will be available to those in the specific precincts listed above but if hte voter is willing to use the Express Vote Ballot Marker then they can vote at any location on Election Day.
2.) In what manner will Precinct Officers be assigned? <input type="checkbox"/> This location will be fully staffed with election officials
Judges: 2 Clerks: 6 Sheriffs: 2 Troubleshooter: 2 TOTAL # OF WORKERS: 12
3.) How will the voting location be publicized to voters? How will the location be noted as a "Vote Center?"
On website, newspaper advertising, direct mail postcards.
4.) How will the voting location serve as a focal point to meet the needs of a diverse community?
The goal is for each city to have a location to vote. Some cities will have more than one location because of geography, size or transportation needs. The 5 early voting locations will have print on demand ballots so if a voter goes to the wrong location they can still vote.



Commonwealth of Kentucky

Petition to Consolidate Precincts and Precinct Election Officers

County Name	
Kenton	
Election	Dates of Voting
Primary	5/21/24
Person Completing this Form	
Name	GABRIELLE SUMME
Title	KENTON COUNTY CLERK
About Voting Location	
<i>Example: Tulip Poplar High, 123 Main Street, County High School</i>	
Name	EDGEWOOD LIBERTY HALL
Address	550 FREEDOM PARK DR, EDGEWOOD
Type	ELECTION DAY
Number of Parking Spaces	Sufficient Parking Spaces?
87	YES
Voting Equipment to be Used	
Number	Type of equipment
2	DS200 SCANNERS
4	EXPRESS VOTE BALLOT MARKERS
4	E-POLL BOOKS

Precincts in Voting Location	
Precinct name	Number of registered voters
C306 EDG #2	2314
C308 EDG #4	1089

Narrative Plan <i>(please attach additional sheets if needed)</i>						
1.) Why is this consolidation of these precincts desirable? <input type="checkbox"/> This is the same plan used in the last election <p>Pre-printed ballots will be available to those in the specific precincts listed above but if the voter is willing to use the Express Vote Ballot Marker then they can vote at any location on Election Day.</p>						
2.) In what manner will Precinct Officers be assigned? <input type="checkbox"/> This location will be fully staffed with election officials <table style="width: 100%;"> <tr> <td>Judges: 2</td> <td>Troubleshooter: 1</td> </tr> <tr> <td>Clerks: 4</td> <td>TOTAL # OF WORKERS: 9</td> </tr> <tr> <td>Sheriffs: 2</td> <td> </td> </tr> </table>	Judges: 2	Troubleshooter: 1	Clerks: 4	TOTAL # OF WORKERS: 9	Sheriffs: 2	
Judges: 2	Troubleshooter: 1					
Clerks: 4	TOTAL # OF WORKERS: 9					
Sheriffs: 2						
3.) How will the voting location be publicized to voters? How will the location be noted as a "Vote Center?" <p>On website, newspaper advertising, direct mail postcards.</p>						
4.) How will the voting location serve as a focal point to meet the needs of a diverse community? <p>The goal is for each city to have a location to vote. Some cities will have more than one location because of geography, size or transportation needs. The 5 early voting locations will have print on demand ballots so if a voter goes to the wrong location they can still vote.</p>						



Commonwealth of Kentucky

Petition to Consolidate Precincts and Precinct Election Officers

County Name	
Kenton	
Election Dates of Voting	
Primary 5/21/24	
Person Completing this Form	
Name	GABRIELLE SUMME
Title	KENTON COUNTY CLERK
About Voting Location	
Example: Tulip Poplar High, 123 Main Street, County High School	
Name	ELSMERE CITY BLDG
Address	3921 Dixie Hwy, Elsmere
Type	ELECTION DAY
Number of Parking Spaces	Sufficient Parking Spaces?
46	YES
Voting Equipment to be Used	
Number	Type of equipment
1	DS200 SCANNERS
4	EXPRESS VOTE BALLOT MARKERS
2	E-POLL BOOKS

Precincts in Voting Location	
Precinct name	Number of registered voters
C309 ELS #1	1559

Narrative Plan (please attach additional sheets if needed)

1.) Why is this consolidation of these precincts desirable?
 This is the same plan used in the last election

Pre-printed ballots will be available to those in the specific precincts listed above but if the voter is willing to use the Express Vote Ballot Marker then they can vote at any location on Election Day.

2.) In what manner will Precinct Officers be assigned?
 This location will be fully staffed with election officials

Judges: 2
 Clerks: 2
 Sheriffs: 1
 Troubleshooter: 1
 TOTAL # OF WORKERS: 6

3.) How will the voting location be publicized to voters? How will the location be noted as a "Vote Center?"
 On website, newspaper advertising, direct mail postcards.

4.) How will the voting location serve as a focal point to meet the needs of a diverse community?
 The goal is for each city to have a location to vote. Some cities will have more than one location because of geography, size or transportation needs. The 5 early voting locations will have print on demand ballots so if a voter goes to the wrong location they can still vote.



Commonwealth of Kentucky

Petition to Consolidate Precincts and Precinct Election Officers

County Name	
Kenton	
Election	Dates of Voting
Primary	5/21/24
Person Completing this Form	
Name	GABRIELLE SUMME
Title	KENTON COUNTY CLERK
About Voting Location	
<i>Example: Tulip Poplar High, 123 Main Street, County High School</i>	
Name	EMERALD SPRINGS CLUBHOUSE
Address	2201 EDENDERRY DR, CRESCENT SPRINGS
Type	ELECTION DAY
Number of Parking Spaces	Sufficient Parking Spaces?
25	YES
Voting Equipment to be Used	
Number	Type of equipment
1	DS200 SCANNERS
4	EXPRESS VOTE BALLOT MARKERS
2	E-POLL BOOKS

Precincts in Voting Location	
Precinct name	Number of registered voters
C301 CSP	2594

Narrative Plan <small>(please attach additional sheets if needed)</small>	
1.) Why is this consolidation of these precincts desirable? <input type="checkbox"/> This is the same plan used in the last election	
<p>Pre-printed ballots will be available to those in the specific precincts listed above but if hte voter is willing to use the Express Vote Ballot Marker then they can vote at any location on Election Day.</p>	
2.) In what manner will Precinct Officers be assigned? <input type="checkbox"/> This location will be fully staffed with election officials	
Judges: 2 Clerks: 2 Sheriffs: 1	Troubleshooter: 1 TOTAL # OF WORKERS: 6
3.) How will the voting location be publicized to voters? How will the location be noted as a "Vote Center?"	
On website, newspaper advertising, direct mail postcards.	
4.) How will the voting location serve as a focal point to meet the needs of a diverse community?	
The goal is for each city to have a location to vote. Some cities will have more than one location because of geography, size or transportation needs. The 5 early voting locations will have print on demand ballots so if a voter goes to the wrong location they can still vote.	



Commonwealth of Kentucky

Petition to Consolidate Precincts and Precinct Election Officers

County Name	
Kenton	
Election	Dates of Voting
Primary	5/21/24
Person Completing this Form	
Name	GABRIELLE SUMME
Title	KENTON COUNTY CLERK
About Voting Location	
<i>Example: Tulip Poplar High, 123 Main Street, County High School</i>	
Name	ERLANGER LIBRARY
Address	401 KENTON LANDS RD, ERLANGER
Type	ELECTION DAY
Number of Parking Spaces	Sufficient Parking Spaces?
141	YES
Voting Equipment to be Used	
Number	Type of equipment
1	DS200 SCANNERS
6	EXPRESS VOTE BALLOT MARKERS
4	E-POLL BOOKS

Precincts in Voting Location	
Precinct name	Number of registered voters
C314 ERL #3	3351

Narrative Plan *(please attach additional sheets if needed)*

1.) Why is this consolidation of these precincts desirable?
 This is the same plan used in the last election

Pre-printed ballots will be available to those in the specific precincts listed above but if the voter is willing to use the Express Vote Ballot Marker then they can vote at any location on Election Day.

2.) In what manner will Precinct Officers be assigned?
 This location will be fully staffed with election officials

Judges: 2
 Clerks: 4
 Sheriffs: 2

Troubleshooter: 1
TOTAL # OF WORKERS: 10

3.) How will the voting location be publicized to voters? How will the location be noted as a "Vote Center?"

On website, newspaper advertising, direct mail postcards.

4.) How will the voting location serve as a focal point to meet the needs of a diverse community?

The goal is for each city to have a location to vote. Some cities will have more than one location because of geography, size or transportation needs. The 5 early voting locations will have print on demand ballots so if a voter goes to the wrong location they can still vote.



Commonwealth of Kentucky

Petition to Consolidate Precincts and Precinct Election Officers

County Name	
Kenton	
Election	Dates of Voting
Primary	5/21/24
Person Completing this Form	
Name	GABRIELLE SUMME
Title	KENTON COUNTY CLERK
About Voting Location	
<i>Example: Tulip Poplar High, 123 Main Street, County High School</i>	
Name	FT. MITCHELL CITY BLDG
Address	2355 DIXIE HWY, FT. MITCHELL
Type	ELECTION DAY
Number of Parking Spaces	Sufficient Parking Spaces?
67	YES
Voting Equipment to be Used	
Number	Type of equipment
2	DS200 SCANNERS
6	EXPRESS VOTE BALLOT MARKERS
6	E-POLL BOOKS

Precincts in Voting Location	
Precinct name	Number of registered voters
A117 FTM #2	3812
A118 FTM #3	1954

Narrative Plan <i>(please attach additional sheets if needed)</i>
<p>1.) Why is this consolidation of these precincts desirable?</p> <p><input type="checkbox"/> This is the same plan used in the last election</p> <p>Pre-printed ballots will be available to those in the specific precincts listed above but if hte voter is willing to use the Express Vote Ballot Marker then they can vote at any location on Election Day.</p>
<p>2.) In what manner will Precinct Officers be assigned?</p> <p><input type="checkbox"/> This location will be fully staffed with election officials</p> <p>Judges: 2 Clerks: 6 Sheriffs: 2</p> <p>Troubleshooter: 1 TOTAL # OF WORKERS: 12</p>
<p>3.) How will the voting location be publicized to voters? How will the location be noted as a "Vote Center?"</p> <p>On website, newspaper advertising, direct mail postcards.</p>
<p>4.) How will the voting location serve as a focal point to meet the needs of a diverse community?</p> <p>The goal is for each city to have a location to vote. Some cities will have more than one location because of geography, size or transportation needs. The 5 early voting locations will have print on demand ballots so if a voter goes to the wrong location they can still vote.</p>



Commonwealth of Kentucky

Petition to Consolidate Precincts and Precinct Election Officers

County Name	
Kenton	
Election	Dates of Voting
Primary	5/21/24
Person Completing this Form	
Name	GABRIELLE SUMME
Title	KENTON COUNTY CLERK
About Voting Location	
<i>Example: Tulip Poplar High, 123 Main Street, County High School</i>	
Name	FT WRIGHT CIVIC CLUB
Address	115 KENNEDY RD, FT. WRIGHT
Type	ELECTION DAY
Number of Parking Spaces	Sufficient Parking Spaces?
97	YES
Voting Equipment to be Used	
Number	Type of equipment
2	DS200 SCANNERS
6	EXPRESS VOTE BALLOT MARKERS
4	E-POLL BOOKS

Precincts in Voting Location	
Precinct name	Number of registered voters
A119 FTW #1	3610

Narrative Plan *(please attach additional sheets if needed)*

1.) Why is this consolidation of these precincts desirable?
 This is the same plan used in the last election

Pre-printed ballots will be available to those in the specific precincts listed above but if the voter is willing to use the Express Vote Ballot Marker then they can vote at any location on Election Day.

2.) In what manner will Precinct Officers be assigned?
 This location will be fully staffed with election officials

Judges: 2	Troubleshooter: 1
Clerks: 4	TOTAL # OF WORKERS: 8
Sheriffs: 1	

3.) How will the voting location be publicized to voters? How will the location be noted as a "Vote Center?"
On website, newspaper advertising, direct mail postcards.

4.) How will the voting location serve as a focal point to meet the needs of a diverse community?
The goal is for each city to have a location to vote. Some cities will have more than one location because of geography, size or transportation needs. The 5 early voting locations will have print on demand ballots so if a voter goes to the wrong location they can still vote.



Commonwealth of Kentucky

Petition to Consolidate Precincts and Precinct Election Officers

County Name	
Kenton	
Election	Dates of Voting
Primary	5/21/24
Person Completing this Form	
Name	GABRIELLE SUMME
Title	KENTON COUNTY CLERK
About Voting Location	
<i>Example: Tulip Poplar High, 123 Main Street, County High School</i>	
Name	GLENN O SWING
Address	501 WEST 19TH, COVINGTON
Type	ELECTION DAY
Number of Parking Spaces	Sufficient Parking Spaces?
50	YES
Voting Equipment to be Used	
Number	Type of equipment
1	DS200 SCANNERS
4	EXPRESS VOTE BALLOT MARKERS
4	E-POLL BOOKS

Precincts in Voting Location	
Precinct name	Number of registered voters
A110 COV #9	1763
A109 COV #8	1032
A111 COV #10	415

Narrative Plan (please attach additional sheets if needed)

1.) Why is this consolidation of these precincts desirable?
 This is the same plan used in the last election

Pre-printed ballots will be available to those in the specific precincts listed above but if the voter is willing to use the Express Vote Ballot Marker then they can vote at any location on Election Day.

2.) In what manner will Precinct Officers be assigned?
 This location will be fully staffed with election officials

Judges: 2
 Clerks: 4
 Sheriffs: 2

Troubleshooter: 2
 TOTAL # OF WORKERS: 10

3.) How will the voting location be publicized to voters? How will the location be noted as a "Vote Center?"

On website, newspaper advertising, direct mail postcards.

4.) How will the voting location serve as a focal point to meet the needs of a diverse community?

The goal is for each city to have a location to vote. Some cities will have more than one location because of geography, size or transportation needs. The 5 early voting locations will have print on demand ballots so if a voter goes to the wrong location they can still vote.



Commonwealth of Kentucky

Petition to Consolidate Precincts and Precinct Election Officers

County Name	
Kenton	
Election	Dates of Voting
Primary	5/21/24
Person Completing this Form	
Name	GABRIELLE SUMME
Title	KENTON COUNTY CLERK
About Voting Location	
<i>Example: Tulip Poplar High, 123 Main Street, County High School</i>	
Name	GOLF COURSES OF KENTON COUNTY
Address	3908 Richardson Rd, Independence
Type	ELECTION DAY
Number of Parking Spaces	Sufficient Parking Spaces?
252	YES
Voting Equipment to be Used	
Number	Type of equipment
2	DS200 SCANNERS
6	EXPRESS VOTE BALLOT MARKERS
4	E-POLL BOOKS

Precincts in Voting Location	
Precinct name	Number of registered voters
B212 IND #5	1267
C317 ERL #6	2059

Narrative Plan (please attach additional sheets if needed)	
1.) Why is this consolidation of these precincts desirable? <input type="checkbox"/> This is the same plan used in the last election	
Pre-printed ballots will be available to those in the specific precincts listed above but if hte voter is willing to use the Express Vote Ballot Marker then they can vote at any location on Election Day.	
2.) In what manner will Precinct Officers be assigned? <input type="checkbox"/> This location will be fully staffed with election officials	
Judges: 2	Troubleshooter: 1
Clerks: 4	TOTAL # OF WORKERS: 9
Sheriffs: 2	
3.) How will the voting location be publicized to voters? How will the location be noted as a "Vote Center?"	
On website, newspaper advertising, direct mail postcards.	
4.) How will the voting location serve as a focal point to meet the needs of a diverse community?	
The goal is for each city to have a location to vote. Some cities will have more than one location because of geography, size or transportation needs. The 5 early voting locations will have print on demand ballots so if a voter goes to the wrong location they can still vote.	



Commonwealth of Kentucky

Petition to Consolidate Precincts and Precinct Election Officers

County Name	
Kenton	
Election	Dates of Voting
Primary	5/21/24
Person Completing this Form	
Name	GABRIELLE SUMME
Title	KENTON COUNTY CLERK
About Voting Location	
<i>Example: Tulip Poplar High, 123 Main Street, County High School</i>	
Name	INDEPENDENCE LIBRARY
Address	1992 WALTON NICHOLSON RD, INDEPENDENCE
Type	ELECTION DAY
Number of Parking Spaces	Sufficient Parking Spaces?
138	YES
Voting Equipment to be Used	
Number	Type of equipment
1	DS200 SCANNERS
6	EXPRESS VOTE BALLOT MARKERS
2	E-POLL BOOKS

Precincts in Voting Location	
Precinct name	Number of registered voters
B219 NICH #1	1383
B220 NICH #2	2334

Narrative Plan *(please attach additional sheets if needed)*

1.) Why is this consolidation of these precincts desirable?
 This is the same plan used in the last election

Pre-printed ballots will be available to those in the specific precincts listed above but if the voter is willing to use the Express Vote Ballot Marker then they can vote at any location on Election Day.

2.) In what manner will Precinct Officers be assigned?
 This location will be fully staffed with election officials

Judges: 2 Troubleshooter: 1
Clerks: 2 TOTAL # OF WORKERS: 7
Sheriffs: 2

3.) How will the voting location be publicized to voters? How will the location be noted as a "Vote Center?"

On website, newspaper advertising, direct mail postcards.

4.) How will the voting location serve as a focal point to meet the needs of a diverse community?

The goal is for each city to have a location to vote. Some cities will have more than one location because of geography, size or transportation needs. The 5 early voting locations will have print on demand ballots so if a voter goes to the wrong location they can still vote.



Commonwealth of Kentucky

Petition to Consolidate Precincts and Precinct Election Officers

County Name	
Kenton	
Election	Dates of Voting
Primary	5/21/24
Person Completing this Form	
Name	GABRIELLE SUMME
Title	KENTON COUNTY CLERK
About Voting Location	
<i>Example: Tulip Poplar High, 123 Main Street, County High School</i>	
Name	KENTON GOV'T BLDG
Address	1840 Simon Kenton Way, Covington
Type	ELECTION DAY
Number of Parking Spaces	Sufficient Parking Spaces?
132	YES
Voting Equipment to be Used	
Number	Type of equipment
1	DS200 SCANNERS
4	EXPRESS VOTE BALLOT MARKERS
2	E-POLL BOOKS

Precincts in Voting Location	
Precinct name	Number of registered voters
A112 COV#11	769

Narrative Plan <i>(please attach additional sheets if needed)</i>	
1.) Why is this consolidation of these precincts desirable?	
<input type="checkbox"/> This is the same plan used in the last election	
Pre-printed ballots will be available to those in the specific precincts listed above but if the voter is willing to use the Express Vote Ballot Marker then they can vote at any location on Election Day.	
2.) In what manner will Precinct Officers be assigned?	
<input type="checkbox"/> This location will be fully staffed with election officials	
Judges: 2	Troubleshooter: 1
Clerks: 2	TOTAL # OF WORKERS: 7
Sheriffs: 1	
3.) How will the voting location be publicized to voters? How will the location be noted as a "Vote Center?"	
On website, newspaper advertising, direct mail postcards.	
4.) How will the voting location serve as a focal point to meet the needs of a diverse community?	
The goal is for each city to have a location to vote. Some cities will have more than one location because of geography, size or transportation needs. The 5 early voting locations will have print on demand ballots so if a voter goes to the wrong location they can still vote.	



Commonwealth of Kentucky

Petition to Consolidate Precincts and Precinct Election Officers

County Name	
Kenton	
Election	Dates of Voting
Primary	5/21/24
Person Completing this Form	
Name	GABRIELLE SUMME
Title	KENTON COUNTY CLERK
About Voting Location	
<i>Example: Tulip Poplar High, 123 Main Street, County High School</i>	
Name	LATONIA ELEMENTARY
Address	3933 Huntington Ave, Covington
Type	ELECTION DAY
Number of Parking Spaces	Sufficient Parking Spaces?
74	YES
Voting Equipment to be Used	
Number	Type of equipment
2	DS200 SCANNERS
4	EXPRESS VOTE BALLOT MARKERS
4	E-POLL BOOKS

Precincts in Voting Location	
Precinct name	Number of registered voters
A115 COV #14	1823
A113 COV #12	2243

Narrative Plan <i>(please attach additional sheets if needed)</i>	
1.) Why is this consolidation of these precincts desirable?	
<input type="checkbox"/> This is the same plan used in the last election	
Pre-printed ballots will be available to those in the specific precincts listed above but if hte voter is willing to use the Express Vote Ballot Marker then they can vote at any location on Election Day.	
2.) In what manner will Precinct Officers be assigned?	
<input type="checkbox"/> This location will be fully staffed with election officials	
Judges: 2	Troubleshooter: 1
Clerks: 4	TOTAL # OF WORKERS: 9
Sheriffs: 2	
3.) How will the voting location be publicized to voters? How will the location be noted as a "Vote Center?"	
On website, newspaper advertising, direct mail postcards.	
4.) How will the voting location serve as a focal point to meet the needs of a diverse community?	
The goal is for each city to have a location to vote. Some cities will have more than one location because of geography, size or transportation needs. The 5 early voting locations will have print on demand ballots so if a voter goes to the wrong location they can still vote.	



Commonwealth of Kentucky

Petition to Consolidate Precincts and Precinct Election Officers

County Name	
Kenton	
Election	Dates of Voting
Primary	5/21/24
Person Completing this Form	
Name	GABRIELLE SUMME
Title	KENTON COUNTY CLERK
About Voting Location	
<i>Example: Tulip Poplar High, 123 Main Street, County High School</i>	
Name	LOOKOUT HEIGHTS CIVIC CLUB
Address	1661 PARK RD, FT WRIGHT
Type	ELECTION DAY
Number of Parking Spaces	Sufficient Parking Spaces?
65	YES
Voting Equipment to be Used	
Number	Type of equipment
1	DS200 SCANNERS
4	EXPRESS VOTE BALLOT MARKERS
2	E-POLL BOOKS

Precincts in Voting Location	
Precinct name	Number of registered voters
A120 FTW #2	2151

Narrative Plan <i>(please attach additional sheets if needed)</i>
1.) Why is this consolidation of these precincts desirable? <input type="checkbox"/> This is the same plan used in the last election
Pre-printed ballots will be available to those in the specific precincts listed above but if hte voter is willing to use the Express Vote Ballot Marker then they can vote at any location on Election Day.
2.) In what manner will Precinct Officers be assigned? <input type="checkbox"/> This location will be fully staffed with election officials
Judges: 2 Clerks: 2 Sheriffs: 1 Troubleshooter: 1 TOTAL # OF WORKERS: 6
3.) How will the voting location be publicized to voters? How will the location be noted as a "Vote Center?"
On website, newspaper advertising, direct mail postcards.
4.) How will the voting location serve as a focal point to meet the needs of a diverse community?
The goal is for each city to have a location to vote. Some cities will have more than one location because of geography, size or transportation needs. The 5 early voting locations will have print on demand ballots so if a voter goes to the wrong location they can still vote.



Commonwealth of Kentucky

Petition to Consolidate Precincts and Precinct Election Officers

County Name	
Kenton	
Election	Dates of Voting
Primary	5/21/24
Person Completing this Form	
Name	GABRIELLE SUMME
Title	KENTON COUNTY CLERK
About Voting Location	
<i>Example: Tulip Poplar High, 123 Main Street, County High School</i>	
Name	MADISON AVE CHRISTIAN CHURCH
Address	1530 MADISON AVE, COVINGTON
Type	ELECTION DAY
Number of Parking Spaces	Sufficient Parking Spaces?
51	YES
Voting Equipment to be Used	
Number	Type of equipment
2	DS200 SCANNERS
8	EXPRESS VOTE BALLOT MARKERS
4	E-POLL BOOKS

Precincts in Voting Location	
Precinct name	Number of registered voters
A105 COV #4	1799
A106 COV #5	2164
A108 COV #7	1304

Narrative Plan *(please attach additional sheets if needed)*

1.) Why is this consolidation of these precincts desirable?
 This is the same plan used in the last election
 Pre-printed ballots will be available to those in the specific precincts listed above but if hte voter is willing to use the Express Vote Ballot Marker then they can vote at any location on Election Day.

2.) In what manner will Precinct Officers be assigned?
 This location will be fully staffed with election officials
 Judges: 2 Troubleshooter: 1
 Clerks: 4 TOTAL # OF WORKERS: 9
 Sheriffs: 2

3.) How will the voting location be publicized to voters? How will the location be noted as a "Vote Center?"
 On website, newspaper advertising, direct mail postcards.

4.) How will the voting location serve as a focal point to meet the needs of a diverse community?
 The goal is for each city to have a location to vote. Some cities will have more than one location because of geography, size or transportation needs. The 5 early voting locations will have print on demand ballots so if a voter goes to the wrong location they can still vote.



Commonwealth of Kentucky

Petition to Consolidate Precincts and Precinct Election Officers

County Name	
Kenton	
Election	Dates of Voting
Primary	5/21/24
Person Completing this Form	
Name	GABRIELLE SUMME
Title	KENTON COUNTY CLERK
About Voting Location	
<i>Example: Tulip Poplar High, 123 Main Street, County High School</i>	
Name	MOORE ACTIVITY CENTER
Address	304 LINDEN AVE, COVINGTON
Type	ELECTION DAY
Number of Parking Spaces	Sufficient Parking Spaces?
40	YES
Voting Equipment to be Used	
Number	Type of equipment
1	DS200 SCANNERS
4	EXPRESS VOTE BALLOT MARKERS
2	E-POLL BOOKS

Precincts in Voting Location	
Precinct name	Number of registered voters
A107 COV #6	2948

Narrative Plan (please attach additional sheets if needed)

1.) Why is this consolidation of these precincts desirable?
 This is the same plan used in the last election

Pre-printed ballots will be available to those in the specific precincts listed above but if the voter is willing to use the Express Vote Ballot Marker then they can vote at any location on Election Day.

2.) In what manner will Precinct Officers be assigned?
 This location will be fully staffed with election officials

Judges: 2 Troubleshooter: 1
 Clerks: 2 TOTAL # OF WORKERS: 6
 Sheriffs: 1

3.) How will the voting location be publicized to voters? How will the location be noted as a "Vote Center?"
 On website, newspaper advertising, direct mail postcards.

4.) How will the voting location serve as a focal point to meet the needs of a diverse community?
 The goal is for each city to have a location to vote. Some cities will have more than one location because of geography, size or transportation needs. The 5 early voting locations will have print on demand ballots so if a voter goes to the wrong location they can still vote.



Commonwealth of Kentucky

Petition to Consolidate Precincts and Precinct Election Officers

County Name	
Kenton	
Election	Dates of Voting
Primary	5/21/24
Person Completing this Form	
Name	GABRIELLE SUMME
Title	KENTON COUNTY CLERK
About Voting Location	
Example: Tulip Poplar High, 123 Main Street, County High School	
Name	RIVER RIDGE ELEMENTARY
Address	2772 AMSTERDAM RD, VILLA HILLS
Type	ELECTION DAY
Number of Parking Spaces	Sufficient Parking Spaces?
164	YES
Voting Equipment to be Used	
Number	Type of equipment
2	DS200 SCANNERS
8	EXPRESS VOTE BALLOT MARKERS
6	E-POLL BOOKS

Precincts in Voting Location	
Precinct name	Number of registered voters
C319 VH #1	2881
C320 VH #2	2393
C321 VH #3	1744

Narrative Plan *(please attach additional sheets if needed)*

1.) Why is this consolidation of these precincts desirable?
 This is the same plan used in the last election

Pre-printed ballots will be available to those in the specific precincts listed above but if hte voter is willing to use the Express Vote Ballot Marker then they can vote at any location on Election Day.

2.) In what manner will Precinct Officers be assigned?
 This location will be fully staffed with election officials

Judges: 2 Troubleshooter: 2
Clerks: 6 TOTAL # OF WORKERS: 12
Sheriffs: 2

3.) How will the voting location be publicized to voters? How will the location be noted as a "Vote Center?"

On website, newspaper advertising, direct mail postcards.

4.) How will the voting location serve as a focal point to meet the needs of a diverse community?

The goal is for each city to have a location to vote. Some cities will have more than one location because of geography, size or transportation needs. The 5 early voting locations will have print on demand ballots so if a voter goes to the wrong location they can still vote.



Commonwealth of Kentucky

Petition to Consolidate Precincts and Precinct Election Officers

County Name	
Kenton	
Election	Dates of Voting
Primary	5/21/24
Person Completing this Form	
Name	GABRIELLE SUMME
Title	KENTON COUNTY CLERK
About Voting Location <small>Example: Tulip Poplar High, 123 Main Street, County High School</small>	
Name	RYLAND HTS ELEMENTARY SCHOOL
Address	3845 STEWART RD, RYLAND HTS
Type	ELECTION DAY
Number of Parking Spaces	Sufficient Parking Spaces?
114	YES
Voting Equipment to be Used	
Number	Type of equipment
1	DS200 SCANNERS
2	EXPRESS VOTE BALLOT MARKERS
2	E-POLL BOOKS

Precincts in Voting Location	
Precinct name	Number of registered voters
B206 DEC	897
B207 DEC #1.5	9

Narrative Plan <i>(please attach additional sheets if needed)</i>	
<p>1.) Why is this consolidation of these precincts desirable? <input type="checkbox"/> This is the same plan used in the last election</p> <p>Pre-printed ballots will be available to those in the specific precincts listed above but if hte voter is willing to use the Express Vote Ballot Marker then they can vote at any location on Election Day.</p>	
<p>2.) In what manner will Precinct Officers be assigned? <input type="checkbox"/> This location will be fully staffed with election officials</p> <p>Judges: 2 Clerks: 2 Sheriffs: 1</p> <p>Troubleshooter: 1 TOTAL # OF WORKERS: 6</p>	
<p>3.) How will the voting location be publicized to voters? How will the location be noted as a "Vote Center?" On website, newspaper advertising, direct mail postcards.</p>	
<p>4.) How will the voting location serve as a focal point to meet the needs of a diverse community? The goal is for each city to have a location to vote. Some cities will have more than one location because of geography, size or transportation needs. The 5 early voting locations will have print on demand ballots so if a voter goes to the wrong location they can still vote.</p>	



Commonwealth of Kentucky

Petition to Consolidate Precincts and Precinct Election Officers

County Name	
Kenton	
Election	Dates of Voting
Primary	5/21/24
Person Completing this Form	
Name	GABRIELLE SUMME
Title	KENTON COUNTY CLERK
About Voting Location	
<i>Example: Tulip Poplar High, 123 Main Street, County High School</i>	
Name	SCHOOL HOUSE BEES
Address	4041 Visalia Rd, Covington
Type	ELECTION DAY
Number of Parking Spaces	Sufficient Parking Spaces?
38	YES
Voting Equipment to be Used	
Number	Type of equipment
1	DS200 SCANNERS
2	EXPRESS VOTE BALLOT MARKERS
2	E-POLL BOOKS

Precincts in Voting Location	
Precinct name	Number of registered voters
B218 MVW	1148

Narrative Plan *(please attach additional sheets if needed)*

1.) Why is this consolidation of these precincts desirable?
 This is the same plan used in the last election

Pre-printed ballots will be available to those in the specific precincts listed above but if the voter is willing to use the Express Vote Ballot Marker then they can vote at any location on Election Day. +

2.) In what manner will Precinct Officers be assigned?
 This location will be fully staffed with election officials

Judges: 2 Troubleshooter: 1
 Clerks: 2 TOTAL # OF WORKERS: 6
 Sheriffs: 1

3.) How will the voting location be publicized to voters? How will the location be noted as a "Vote Center?"
 On website, newspaper advertising, direct mail postcards.

4.) How will the voting location serve as a focal point to meet the needs of a diverse community?
 The goal is for each city to have a location to vote. Some cities will have more than one location because of geography, size or transportation needs. The 5 early voting locations will have print on demand ballots so if a voter goes to the wrong location they can still vote.



Commonwealth of Kentucky

Petition to Consolidate Precincts and Precinct Election Officers

County Name	
Kenton	
Election	Dates of Voting
Primary	5/21/24
Person Completing this Form	
Name	GABRIELLE SUMME
Title	KENTON COUNTY CLERK
About Voting Location	
<i>Example: Tulip Poplar High, 123 Main Street, County High School</i>	
Name	SCOTT HS WOODLAND CAMPUS
Address	5400 OLD TAYLOR MILL RD, TAYLOR MILL
Type	ELECTION DAY
Number of Parking Spaces	Sufficient Parking Spaces?
233	YES
Voting Equipment to be Used	
Number	Type of equipment
2	DS200 SCANNERS
8	EXPRESS VOTE BALLOT MARKERS
6	E-POLL BOOKS

Precincts in Voting Location	
Precinct name	Number of registered voters
B223 TM #1	3204
B224 TM #2	1719
B225 TM #3	1059

Narrative Plan <i>(please attach additional sheets if needed)</i>	
1.) Why is this consolidation of these precincts desirable?	
<input type="checkbox"/> This is the same plan used in the last election	
Pre-printed ballots will be available to those in the specific precincts listed above but if the voter is willing to use the Express Vote Ballot Marker then they can vote at any location on Election Day.	
2.) In what manner will Precinct Officers be assigned?	
<input type="checkbox"/> This location will be fully staffed with election officials	
Judges: 2	Troubleshooter: 2
Clerks: 6	TOTAL # OF WORKERS: 12
Sheriffs: 2	
3.) How will the voting location be publicized to voters? How will the location be noted as a "Vote Center?"	
On website, newspaper advertising, direct mail postcards.	
4.) How will the voting location serve as a focal point to meet the needs of a diverse community?	
The goal is for each city to have a location to vote. Some cities will have more than one location because of geography, size or transportation needs. The 5 early voting locations will have print on demand ballots so if a voter goes to the wrong location they can still vote.	



Commonwealth of Kentucky

Petition to Consolidate Precincts and Precinct Election Officers

County Name	
Kenton	
Election	Dates of Voting
Primary	5/21/24
Person Completing this Form	
Name	GABRIELLE SUMME
Title	KENTON COUNTY CLERK
About Voting Location	
<i>Example: Tulip Poplar High, 123 Main Street, County High School</i>	
Name	ST BARBARA EVENT CENTER -BOD
Address	4042 TURKEYFOOT RD, ERLANGER
Type	ELECTION DAY
Number of Parking Spaces	Sufficient Parking Spaces?
327	YES
Voting Equipment to be Used	
Number	Type of equipment
2	DS200 SCANNERS
8	EXPRESS VOTE BALLOT MARKERS
6	E-POLL BOOKS

Precincts in Voting Location	
Precinct name	Number of registered voters
C313 ERL #2	1160
C316 ERL #5	3084

Narrative Plan (please attach additional sheets if needed)
1.) Why is this consolidation of these precincts desirable? <input type="checkbox"/> This is the same plan used in the last election Pre-printed ballots will be available to those in the specific precincts listed above but if the voter is willing to use the Express Vote Ballot Marker then they can vote at any location on Election Day.
2.) In what manner will Precinct Officers be assigned? <input type="checkbox"/> This location will be fully staffed with election officials Judges: 2 Troubleshooter: 2 Clerks: 6 TOTAL # OF WORKERS: 12 Sheriffs: 2
3.) How will the voting location be publicized to voters? How will the location be noted as a "Vote Center?" On website, newspaper advertising, direct mail postcards.
4.) How will the voting location serve as a focal point to meet the needs of a diverse community? The goal is for each city to have a location to vote. Some cities will have more than one location because of geography, size or transportation needs. The 5 early voting locations will have print on demand ballots so if a voter goes to the wrong location they can still vote.



Commonwealth of Kentucky Petition to Consolidate Precincts and Precinct Election Officers

County Name	
Kenton	
Election	Dates of Voting
Primary	5/21/24
Person Completing this Form	
Name	GABRIELLE SUMME
Title	KENTON COUNTY CLERK
About Voting Location <i>Example: Tulip Poplar High, 123 Main Street, County High School</i>	
Name	TURKEYFOOT MIDDLE
Address	3300 TURKEYFOOT RD, EDGEWOOD
Type	ELECTION DAY
Number of Parking Spaces	Sufficient Parking Spaces?
359	YES
Voting Equipment to be Used	
Number	Type of equipment
2	DS200 SCANNERS
4	EXPRESS VOTE BALLOT MARKERS
4	E-POLL BOOKS

Precincts in Voting Location	
Precinct name	Number of registered voters
C304 EDG #1	1072
C305 EDG 1.5	9
C307 EDG #3	3098

Narrative Plan <i>(please attach additional sheets if needed)</i>	
1.) Why is this consolidation of these precincts desirable? <input type="checkbox"/> This is the same plan used in the last election	
Pre-printed ballots will be available to those in the specific precincts listed above but if the voter is willing to use the Express Vote Ballot Marker then they can vote at any location on Election Day.	
2.) In what manner will Precinct Officers be assigned? <input type="checkbox"/> This location will be fully staffed with election officials	
Judges: 2 Clerks: 4 Sheriffs: 2	Troubleshooter: 1 TOTAL # OF WORKERS: 9
3.) How will the voting location be publicized to voters? How will the location be noted as a "Vote Center?"	
On website, newspaper advertising, direct mail postcards.	
4.) How will the voting location serve as a focal point to meet the needs of a diverse community?	
The goal is for each city to have a location to vote. Some cities will have more than one location because of geography, size or transportation needs. The 5 early voting locations will have print on demand ballots so if a voter goes to the wrong location they can still vote.	



Commonwealth of Kentucky

Petition to Consolidate Precincts and Precinct Election Officers

County Name	
Kenton	
Election	Dates of Voting
Primary	5/21/24
Person Completing this Form	
Name	GABRIELLE SUMME
Title	KENTON COUNTY CLERK
About Voting Location	
<i>Example: Tulip Poplar High, 123 Main Street, County High School</i>	
Name	TWENHOFEL MIDDLE SCHOOL
Address	11800 TAYLOR MILL RD, INDEPENDENCE
Type	ELECTION DAY
Number of Parking Spaces	Sufficient Parking Spaces?
155	YES
Voting Equipment to be Used	
Number	Type of equipment
2	DS200 SCANNERS
8	EXPRESS VOTE BALLOT MARKERS
6	E-POLL BOOKS

Precincts in Voting Location	
Precinct name	Number of registered voters
B213 IND #6	1378
B214 IND 6.5	46
B216 IND #8	3802
B226 WT	859

Narrative Plan <i>(please attach additional sheets if needed)</i>	
<p>1.) Why is this consolidation of these precincts desirable? <input type="checkbox"/> This is the same plan used in the last election</p> <p>Pre-printed ballots will be available to those in the specific precincts listed above but if the voter is willing to use the Express Vote Ballot Marker then they can vote at any location on Election Day.</p>	
<p>2.) In what manner will Precinct Officers be assigned? <input type="checkbox"/> This location will be fully staffed with election officials</p> <p>Judges: 2 Troubleshooter: 2 Clerks: 6 TOTAL # OF WORKERS: 12 Sheriffs: 2</p>	
<p>3.) How will the voting location be publicized to voters? How will the location be noted as a "Vote Center?"</p> <p>On website, newspaper advertising, direct mail postcards.</p>	
<p>4.) How will the voting location serve as a focal point to meet the needs of a diverse community?</p> <p>The goal is for each city to have a location to vote. Some cities will have more than one location because of geography, size or transportation needs. The 5 early voting locations will have print on demand ballots so if a voter goes to the wrong location they can still vote.</p>	



Commonwealth of Kentucky

Petition to Consolidate Precincts and Precinct Election Officers

County Name	
Kenton	
Election	Dates of Voting
Primary	5/21/24
Person Completing this Form	
Name	GABRIELLE SUMME
Title	KENTON COUNTY CLERK
About Voting Location	
<i>Example: Tulip Poplar High, 123 Main Street, County High School</i>	
Name	COVINGTON LIBRARY
Address	502 Scott St, Covington
Type	EARLY VOTING
Number of Parking Spaces	Sufficient Parking Spaces?
64	YES
Voting Equipment to be Used	
Number	Type of equipment
2	DS200 SCANNERS
10	EXPRESS VOTE BALLOT MARKERS
4	E-POLL BOOKS

Precincts in Voting Location	
Precinct name	Number of registered voters
ALL	

Narrative Plan (please attach additional sheets if needed)

1.) Why is this consolidation of these precincts desirable?
 This is the same plan used in the last election

Pre-printed ballots will be available to those in the specific precincts listed above but if the voter is willing to use the Express Vote Ballot Marker then they can vote at any location on Election Day.

2.) In what manner will Precinct Officers be assigned?
 This location will be fully staffed with election officials

Judges: 2
 Clerks: 4
 Sheriffs: 1
 Troubleshooter: 1
 TOTAL # OF WORKERS: 8

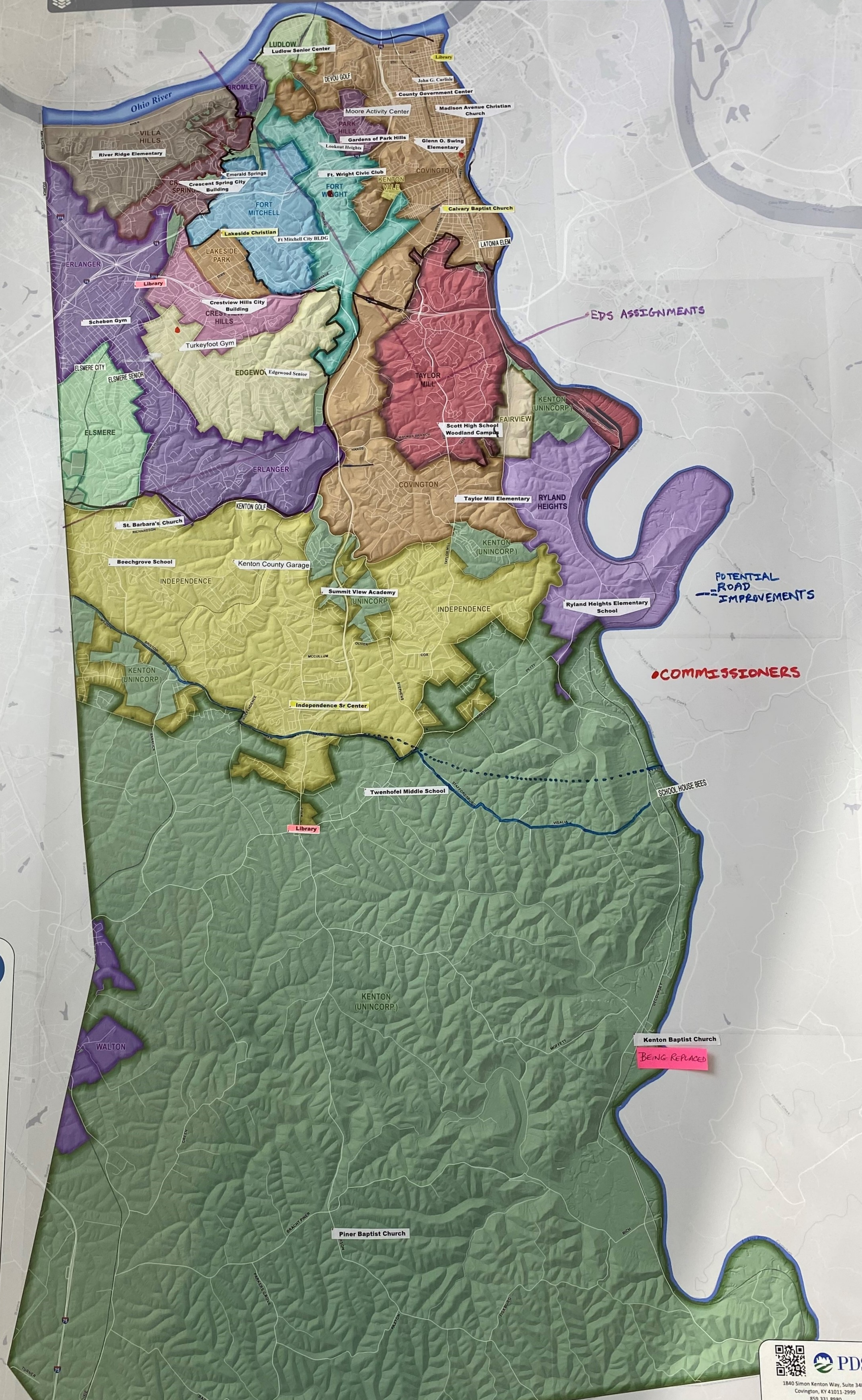
3.) How will the voting location be publicized to voters? How will the location be noted as a "Vote Center?"
 On website, newspaper advertising, direct mail postcards.

4.) How will the voting location serve as a focal point to meet the needs of a diverse community?
 The goal is for each city to have a location to vote. Some cities will have more than one location because of geography, size or transportation needs. The 5 early voting locations will have print on demand ballots so if a voter goes to the wrong location they can still vote.

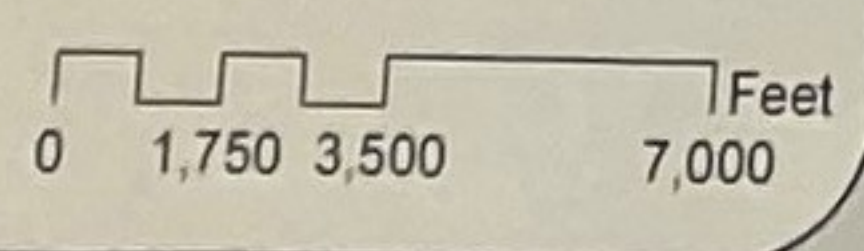
Kenton	Beechgrove Elementary	1029 Bristow Rd	Independence	41051	6:00AM - 6:00PM	B210, B221
Kenton	Calvary Student Life Center	3708 Tibbatts Street	Covington	41015	6:00AM - 6:00PM	A114, B203, A121
Kenton	Crescent Springs City Building	739 Buttermilk Pike	Crescent Springs	41017	6:00AM - 6:00PM	C301
Kenton	Crestview Hills Admin BLDG	50 Town Center Boulevard	Ft Mitchell	41017	6:00AM - 6:00PM	C302, C303
Kenton	Edgewood Liberty Hall	550 Freedom Park Dr	Edgewood	41017	6:00AM - 6:00PM	C306, C308
Kenton	Elsmere Community Center	179 Dell Ave	Elsmere	41018	6:00AM - 6:00PM	C310, C311
Kenton	Emerald Springs Clubhouse	2201 Edenberry Dr	Crescent Springs	41017	6:00AM - 6:00PM	C301
Kenton	Ft Mitchell City Bldg	2355 Dixie Hwy	Ft Mitchell	41017	6:00AM - 6:00PM	A117, A118
Kenton	Ft Wright Civic Club	115 Kennedy Rd	Ft Wright	41011	6:00AM - 6:00PM	A119
Kenton	Gardens of Park Hills	1622 Dixie HWY	Park Hills	41011	6:00AM - 6:00PM	A123
Kenton	Glenn O Swing Elementary	501 W 19th St	Covington	41014	6:00AM - 6:00PM	A109, A110, A111
Kenton	Independence Senior Center	2001 Jackwoods Pkwy	Independence	41051	6:00AM - 6:00PM	B215, B217
Kenton	John G. Carlisle Elementary	910 Holman St	Covington	41011	6:00AM - 6:00PM	A103
Kenton	School House Bees	4041 Visalia Rd	Independence	41051	6:00AM - 6:00PM	B218
Kenton	Kenton County Public Works	420 Independence Station Rd	Independence	41051	6:00AM - 6:00PM	B211
Kenton	Kenton County Gov't Center	1840 Simon Kenton Way	Covington	41011	6:00AM - 6:00PM	A112
Kenton	Lakeside Christian Church	195 Buttermilk Pike	Lakeside Park	41017	6:00AM - 6:00PM	A116, C318
Kenton	Covington Library	502 Scott Boulevard	Covington	41011	6:00AM - 6:00PM	A102
Kenton	Erlanger Library	401 Kenton Lands Rd	Erlanger	41018	6:00AM - 6:00PM	C314
Kenton	Independence Library	1992 Walton Nicholson Rd	Independence	41051	6:00AM - 6:00PM	B219, B220
Kenton	Lookout Heights Civic Club	1661 Park Rd	Ft Wright	41011	6:00AM - 6:00PM	A120
Kenton	Ludlow Community Center	808 Elm St	Ludlow	41016	6:00AM - 6:00PM	A101, A122
Kenton	Madison Ave Christian Church	1530 Madison Ave	Covington	41011	6:00AM - 6:00PM	A105, A106, A108
Kenton	Moore Activity Center	304 Linden Ave	Covington	41011	6:00AM - 6:00PM	A107
Kenton	Piner Baptist Church	15044 Madison Pike	Morning View	41063	6:00AM - 6:00PM	B201, B202, B222
Kenton	River Ridge Elementary	2772 Amsterdam Rd	Villa Hills	41017	6:00AM - 6:00PM	C319, C320, C321
Kenton	Ryland Heights Elementary	3845 Stewart Dr	Ryland Heights	41015	6:00AM - 6:00PM	B206, B207
Kenton	Dietz Auditorium (Lloyd High School)	450 Bartlett Ave	Erlanger	41018	6:00AM - 6:00PM	C312, C322, C315
Kenton	Scott H.S. - Woodland Campus	5400 Old Taylor Mill Rd	Taylor Mill	41015	6:00AM - 6:00PM	B223, B224, B225
Kenton	St. Barbara's Event Center	4042 Turkeyfoot Road	Erlanger	41018	6:00AM - 6:00PM	C313, C316
Kenton	Summit View Academy	5006 Madison Pike	Independence	41051	6:00AM - 6:00PM	B208, B209
Kenton	Taylor Mill Elementary	5907 Taylor Mill Rd	Covington	41015	6:00AM - 6:00PM	B204, B205
Kenton	Turkeyfoot Middle	3230 Turkeyfoot Rd	Edgewood	41017	6:00AM - 6:00PM	C304, C305, C307
Kenton	Twenhofel Middle	11846 Taylor Mill Rd	Independence	41051	6:00AM - 6:00PM	B213, B214, B216, B226
Kenton	Devou Golf & Event Center	1201 Park Dr	Covington	41011	6:00AM - 6:00PM	A104, A124
Kenton	Elsmere City Bldg	3921 Dixie Hwy	Elsmere	41018	6:00AM - 6:00PM	C309
Kenton	Golf Courses of Kenton County	3908 Richardson Rd	Independent	41051	6:00AM - 6:00PM	C317, B212
Kenton	Latonia Elementary	3901 Huntington Ave	Covington	41015	6:00AM - 6:00PM	A113, A115

	County	Drop Box Location Name (Bldg or Place)	Address	City	KY	Zipcode	Outside or Inside
1	KENTON	County Government Center	1840 Simon Kenton Way	Covington	KY	41011	OUTSIDE
2	KENTON	County Government Center	1840 Simon Kenton Way	Covington	KY	41011	INSIDE
3	KENTON	Historic Kenton County Courthouse	5272 Madison Pike	Independence	KY	41051	OUTSIDE
4	KENTON	Historic Kenton County Courthouse	5272 Madison Pike	Independence	KY	41051	INSIDE
5							
6							
7							
8							
9							
10							
11							
12							
13							
14							
15							
16							
17							
18							
19							
20							

KENTON COUNTY CITIES



- BROMLEY
- COVINGTON
- CRESCENT SPRINGS
- CRESTVIEW HILLS
- CRITTENDEN
- EDGEWOOD
- ELSMERE
- ERLANGER
- FAIRVIEW
- FORT MITCHELL
- FORT WRIGHT
- INDEPENDENCE
- KENTON VALE
- LAKESIDE PARK
- LUDLOW
- PARK HILLS
- RYLAND HEIGHTS
- TAYLOR MILL
- UNINCORPORATED KENTON COUNTY
- VILLA HILLS
- WALTON



EDS ASSIGNMENTS

POTENTIAL ROAD IMPROVEMENTS

COMMISSIONERS

Kenton Baptist Church
BEING REPLACED

Piner Baptist Church

PDS

1840 Simon Kenton Way, Suite 3400
Covington, KY 41011-2999
859.331.8980
Office hours M-F 8-5
www.linkgis.org

Parcel data provided by CCPVA,
PCPVA and LINK-GIS.

Date: 10/4/2021