



Commonwealth of Kentucky

County Election Planning Report

County Name	
BUTLER	
Election	
2026 ELECTIONS	
Person Completing this Form	
Name	SHERRY JOHNSON
Title	BUTLER COUNTY CLERK
Phone	270-526-5676

For in-person voting on Election Day, the County Board of Elections will (check one):

- ☐ Consolidate precincts and precinct election officers (Requires Form SBE 74);
- ☒ Utilize the same consolidation plan that was used in a previous election (Requires previous Form SBE 74); or
- ☐ Open all existing precincts.

Excused in-person absentee voting will occur (check one):

- ☒ Within the County Clerk's office; or
- ☐ In another location within the county (Requires Form SBE 74).

No-excuse in-person absentee voting will occur (check one):

- ☐ Within the County Clerk's office; or
- ☒ In another location within the county (Requires Form SBE 74).

Absentee ballot drop-boxes will be located (minimum of one location required):

BUTLER COUNTY COURTHOUSE LOBBY

I have attached:

- ☒ All required Form SBE 74 sheets
- ☐ Relevant Maps
- ☐ Supplemental Narrative

 1/12/2024
Signature Date



Commonwealth of Kentucky

Petition to Consolidate Precincts and Precinct Election Officers

County Name	
BUTLER COUNTY	
Election	Dates of Voting
2026 ELECTIONS	
Person Completing this Form	
Name	SHERRY JOHNSON
Title	BUTLER COUNTY CLERK
About Voting Location	
Example: Tulip Poplar High, 123 Main Street, County High School	
Name	EARLY VOTING
Address	110 N MAIN ST MORGANTOWN KY 42261
Type	EARLY VOTING
Number of Parking Spaces	Sufficient Parking Spaces?
25-30	YES
Voting Equipment to be Used	
Number	Type of equipment
2	VERITY SCANS
1	VERITY PRINT
1	VERITY ADA/DUO

Precincts in Voting Location	
Precinct name	Number of registered voters
A101	1362
B102	1979
C103	2007
D104	1747
E105	1894
ALL PRECINCTS	8989

Narrative Plan (please attach additional sheets if needed)

1.) Why is this consolidation of these precincts desirable?

☒ This is the same plan used in the last election

THIS IS FOR EARLY VOTING SO EVERY ELIGIBLE REGISTERED VOTER IN BUTLER COUNTY HAS THE OPTION TO VOTE EARLY.

2.) In what manner will Precinct Officers be assigned?

☒ This location will be fully staffed with election officials

THE PRECINCT OFFICERS WILL BE SELECTED FROM OUR POOL OF ELECTIONS OFFICERS.

3.) How will the voting location be publicized to voters? How will the location be noted as a "Vote Center?"

THE BANNER (NEWSPAPER), BEECHTREE NEWS (ONLINE NEWSPAPER) OUR WEBSITE AND FACEBOOK PAGE

4.) How will the voting location serve as a focal point to meet the needs of a diverse community?

EARLY VOTING ALLOWS EVERY ELIGIBLE REGISTERED VOTER TO HAVE THE OPTION TO VOTE EARLY WITH NO EXCUSE NEEDED.



Commonwealth of Kentucky

Petition to Consolidate Precincts and Precinct Election Officers

County Name	
BUTLER COUNTY	
Election	Dates of Voting
2026 ELECTIONS	
Person Completing this Form	
Name	SHERRY JOHNSON
Title	BUTLER COUNTY CLERK
About Voting Location	
<i>Example: Tulip Poplar High, 123 Main Street, County High School</i>	
Name	MES VOTE CENTER
Address	210 CEMETERY ST MORGANTOWN KY 42261
Type	VOTE CENTER
Number of Parking Spaces	Sufficient Parking Spaces?
50+	YES
Voting Equipment to be Used	
Number	Type of equipment
2	VERITY SCANS
2	VERITY PRINT
1	VERITY ADA/DUO

Precincts in Voting Location	
Precinct name	Number of registered voters
A101	1362
B102	1979
C103	2007
D104	1747
E105	1894
ALL PRECINCTS	8989

Narrative Plan *(please attach additional sheets if needed)*

1.) Why is this consolidation of these precincts desirable?

☒ This is the same plan used in the last election

THIS IS FOR A VOTE CENTER SO EVERY ELIGIBLE REGISTERED VOTER IN BUTLER COUNTY HAS THE OPTION TO VOTE AT A CENTRAL LOCATION IN MORGANTOWN.

2.) In what manner will Precinct Officers be assigned?

☒ This location will be fully staffed with election officials

THE PRECINCT OFFICERS WILL BE SELECTED FROM OUR POOL OF ELECTIONS OFFICERS.

3.) How will the voting location be publicized to voters? How will the location be noted as a "Vote Center?"

THE BANNER (NEWSPAPER), BEECHTREE NEWS (ONLINE NEWSPAPER) OUR WEBSITE AND FACEBOOK PAGE

4.) How will the voting location serve as a focal point to meet the needs of a diverse community?

THIS IS FOR A VOTE CENTER WHICH ALLOWS EVERY ELIGIBLE REGISTERED VOTER TO HAVE THE OPTION TO VOTE AT A CENTRAL LOCATION IN MORGANTOWN.



Commonwealth of Kentucky

Petition to Consolidate Precincts and Precinct Election Officers

County Name	
BUTLER COUNTY	
Election	Dates of Voting
2026 ELECTIONS	
Person Completing this Form	
Name	SHERRY JOHNSON
Title	BUTLER COUNTY CLERK
About Voting Location	
<i>Example: Tulip Poplar High, 123 Main Street, County High School</i>	
Name	DRIVE THRU VOTE CENTER
Address	642 BOAT FACTORY RD MORGANTOWN KY 42261
Type	VOTE CENTER
Number of Parking Spaces	Sufficient Parking Spaces?
NO PARKING	YES
Voting Equipment to be Used	
Number	Type of equipment
2	VERITY SCANS
2	VERITY PRINT

Precincts in Voting Location	
Precinct name	Number of registered voters
A101	1362
B102	1979
C103	2007
D104	1747
E105	1894
ALL PRECINCTS	8989

Narrative Plan <i>(please attach additional sheets if needed)</i>
1.) Why is this consolidation of these precincts desirable? <input checked="" type="checkbox"/> This is the same plan used in the last election THIS IS FOR A VOTE CENTER SO EVERY ELIGIBLE REGISTERED VOTER IN BUTLER COUNTY HAS THE OPTION TO VOTE AT A CENTRAL LOCATION IN MORGANTOWN.
2.) In what manner will Precinct Officers be assigned? <input checked="" type="checkbox"/> This location will be fully staffed with election officials THE PRECINCT OFFICERS WILL BE SELECTED FROM OUR POOL OF ELECTIONS OFFICERS.
3.) How will the voting location be publicized to voters? How will the location be noted as a "Vote Center?" THE BANNER (NEWSPAPER), BEECHTREE NEWS (ONLINE NEWSPAPER) OUR WEBSITE AND FACEBOOK PAGE
4.) How will the voting location serve as a focal point to meet the needs of a diverse community? THIS IS FOR A VOTE CENTER WHICH ALLOWS EVERY ELIGIBLE REGISTERED VOTER TO HAVE THE OPTION TO VOTE AT A CENTRAL LOCATION IN MORGANTOWN.



Commonwealth of Kentucky

Petition to Consolidate Precincts and Precinct Election Officers

County Name	
BUTLER COUNTY	
Election	Dates of Voting
2026 ELECTIONS	
Person Completing this Form	
Name	SHERRY JOHNSON
Title	BUTLER COUNTY CLERK
About Voting Location	
<i>Example: Tulip Poplar High, 123 Main Street, County High School</i>	
Name	2ND DISTRICT
Address	101 CANEY FORK RD LEWISBURG KY 42256
Type	2ND DISTRICT PRECINCT
Number of Parking Spaces	Sufficient Parking Spaces?
20+	YES
Voting Equipment to be Used	
Number	Type of equipment
2	VERITY SCANS
1	VERITY PRINT
1	VERITY ADA/DUO

Precincts in Voting Location	
Precinct name	Number of registered voters
B102	1979

Narrative Plan *(please attach additional sheets if needed)*

1.) Why is this consolidation of these precincts desirable?

☒ This is the same plan used in the last election

THIS IS FOR A REGULAR PRECINCT IN RURAL BUTLER COUNTY FOR 2ND DISTRICT VOTERS ONLY

2.) In what manner will Precinct Officers be assigned?

☒ This location will be fully staffed with election officials

THE PRECINCT OFFICERS WILL BE SELECTED FROM OUR POOL OF ELECTIONS OFFICERS.

3.) How will the voting location be publicized to voters? How will the location be noted as a "Vote Center?"

THE BANNER (NEWSPAPER), BEECHTREE NEWS (ONLINE NEWSPAPER) OUR WEBSITE AND FACEBOOK PAGE

4.) How will the voting location serve as a focal point to meet the needs of a diverse community?

THIS IS FOR A REGULAR PRECINCT IN RURAL BUTLER COUNTY FOR 2ND DISTRICT VOTERS ONLY



Commonwealth of Kentucky

Petition to Consolidate Precincts and Precinct Election Officers

County Name	
BUTLER COUNTY	
Election	Dates of Voting
2026 ELECTIONS	
Person Completing this Form	
Name	SHERRY JOHNSON
Title	BUTLER COUNTY CLERK
About Voting Location	
<i>Example: Tulip Poplar High, 123 Main Street, County High School</i>	
Name	3RD DISTRICT
Address	153 MAIN ST ROCHESTER KY 42273
Type	3RD DISTRICT PRECINCT
Number of Parking Spaces	Sufficient Parking Spaces?
20+	YES
Voting Equipment to be Used	
Number	Type of equipment
2	VERITY SCANS
1	VERITY PRINT
1	VERITY ADA/DUO

Precincts in Voting Location	
Precinct name	Number of registered voters
C103	2007

Narrative Plan <i>(please attach additional sheets if needed)</i>
1.) Why is this consolidation of these precincts desirable? <input checked="" type="checkbox"/> This is the same plan used in the last election THIS IS FOR A REGULAR PRECINCT IN RURAL BUTLER COUNTY FOR 3RD DISTRICT VOTERS ONLY
2.) In what manner will Precinct Officers be assigned? <input checked="" type="checkbox"/> This location will be fully staffed with election officials THE PRECINCT OFFICERS WILL BE SELECTED FROM OUR POOL OF ELECTIONS OFFICERS.
3.) How will the voting location be publicized to voters? How will the location be noted as a "Vote Center?" THE BANNER (NEWSPAPER), BEECHTREE NEWS (ONLINE NEWSPAPER) OUR WEBSITE AND FACEBOOK PAGE
4.) How will the voting location serve as a focal point to meet the needs of a diverse community? THIS IS FOR A REGULAR PRECINCT IN RURAL BUTLER COUNTY FOR 3RD DISTRICT VOTERS ONLY



Commonwealth of Kentucky

Petition to Consolidate Precincts and Precinct Election Officers

County Name	
BUTLER COUNTY	
Election	Dates of Voting
2026 ELECTIONS	
Person Completing this Form	
Name	SHERRY JOHNSON
Title	BUTLER COUNTY CLERK
About Voting Location	
<i>Example: Tulip Poplar High, 123 Main Street, County High School</i>	
Name	4TH DISTRICT
Address	5539 BROWNSVILLE RDMORGANTOWN KY 42261
Type	4TH DISTRICT PRECINCT
Number of Parking Spaces	Sufficient Parking Spaces?
20+	YES
Voting Equipment to be Used	
Number	Type of equipment
2	VERITY SCANS
1	VERITY PRINT
1	VERITY ADA/DUO

Precincts in Voting Location	
Precinct name	Number of registered voters
D104	1747

Narrative Plan <i>(please attach additional sheets if needed)</i>
1.) Why is this consolidation of these precincts desirable? <input checked="" type="checkbox"/> This is the same plan used in the last election THIS IS FOR A REGULAR PRECINCT IN RURAL BUTLER COUNTY FOR 4TH DISTRICT VOTERS ONLY
2.) In what manner will Precinct Officers be assigned? <input checked="" type="checkbox"/> This location will be fully staffed with election officials THE PRECINCT OFFICERS WILL BE SELECTED FROM OUR POOL OF ELECTIONS OFFICERS.
3.) How will the voting location be publicized to voters? How will the location be noted as a "Vote Center?" THE BANNER (NEWSPAPER), BEECHTREE NEWS (ONLINE NEWSPAPER) OUR WEBSITE AND FACEBOOK PAGE
4.) How will the voting location serve as a focal point to meet the needs of a diverse community? THIS IS FOR A REGULAR PRECINCT IN RURAL BUTLER COUNTY FOR 4TH DISTRICT VOTERS ONLY



Commonwealth of Kentucky

Petition to Consolidate Precincts and Precinct Election Officers

County Name	
BUTLER COUNTY	
Election	Dates of Voting
2026 ELECTIONS	
Person Completing this Form	
Name	SHERRY JOHNSON
Title	BUTLER COUNTY CLERK
About Voting Location	
<i>Example: Tulip Poplar High, 123 Main Street, County High School</i>	
Name	5TH DISTRICT
Address	6810 CANEYVILLE RD MORGANTOWN KY 42261
Type	5TH DISTRICT PRECINCT
Number of Parking Spaces	Sufficient Parking Spaces?
20+	YES
Voting Equipment to be Used	
Number	Type of equipment
2	VERITY SCANS
1	VERITY PRINT
1	VERITY ADA/DUO

Precincts in Voting Location	
Precinct name	Number of registered voters
E105	1894

Narrative Plan *(please attach additional sheets if needed)*

1.) Why is this consolidation of these precincts desirable?

☒ This is the same plan used in the last election

THIS IS FOR A REGULAR PRECINCT IN RURAL BUTLER COUNTY FOR 5TH DISTRICT VOTERS ONLY

2.) In what manner will Precinct Officers be assigned?

☒ This location will be fully staffed with election officials

THE PRECINCT OFFICERS WILL BE SELECTED FROM OUR POOL OF ELECTIONS OFFICERS.

3.) How will the voting location be publicized to voters? How will the location be noted as a "Vote Center?"

THE BANNER (NEWSPAPER), BEECHTREE NEWS (ONLINE NEWSPAPER) OUR WEBSITE AND FACEBOOK PAGE

4.) How will the voting location serve as a focal point to meet the needs of a diverse community?

THIS IS FOR A REGULAR PRECINCT IN RURAL BUTLER COUNTY FOR 5TH DISTRICT VOTERS ONLY

Polling Locations Butler County, KY



*E105(5th Dist)
6810 Caneyville Rd
Morgantown, KY
42261

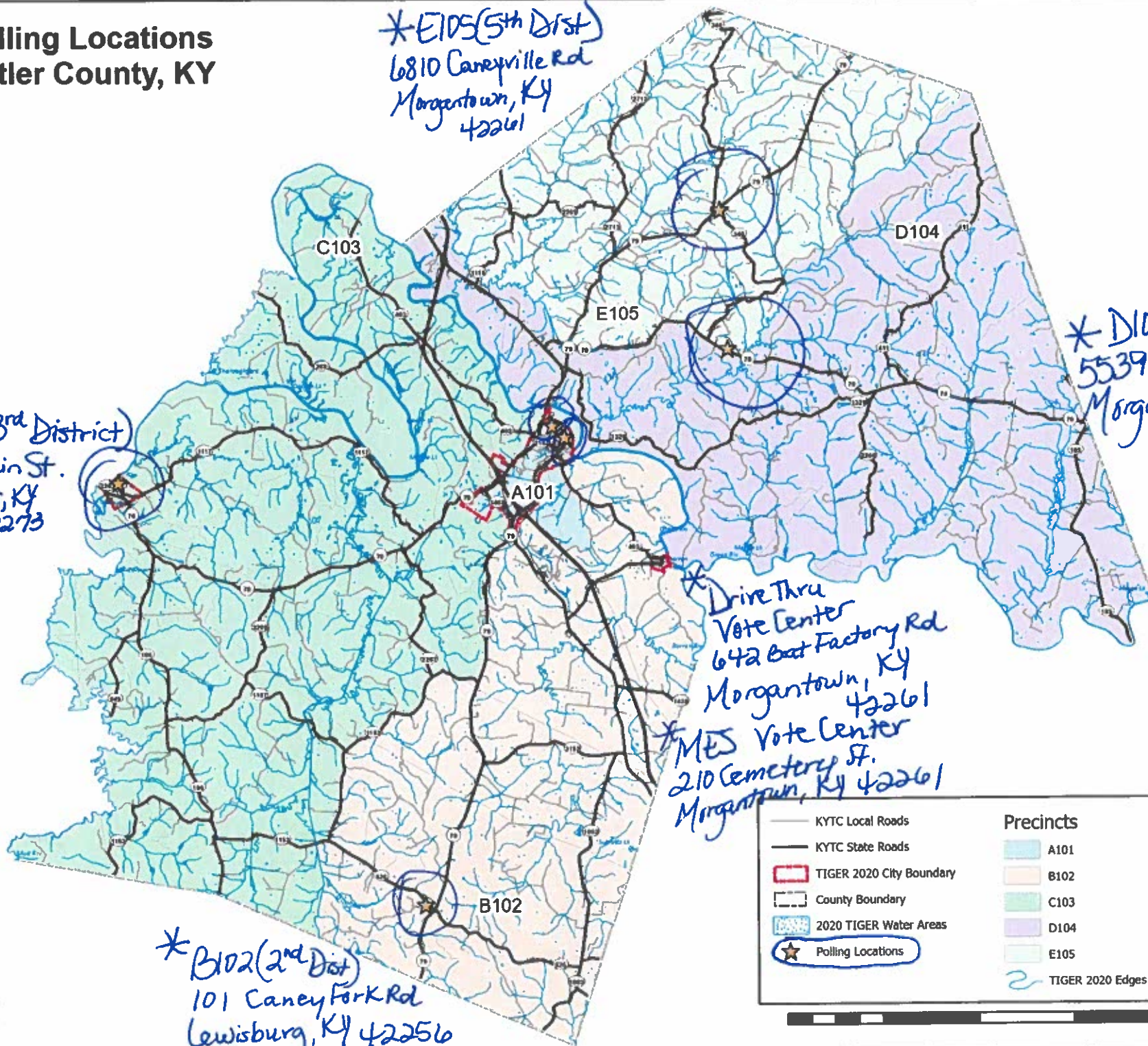
*D104(4th Dist)
5539 Brownsville X
Morgantown, KY
42261

*C103(3rd District)
153 Main St.
Rochester, KY
42273

*Drive Thru
Vote Center
642 Best Factory Rd
Morgantown, KY
42261

*MES Vote Center
210 Cemetery St.
Morgantown, KY 42261

*B102(2nd Dist)
101 Caney Fork Rd
Lewisburg, KY 42256



— KYTC Local Roads	Precincts
— KYTC State Roads	A101
— TIGER 2020 City Boundary	B102
— County Boundary	C103
— 2020 TIGER Water Areas	D104
★ Polling Locations	E105
	2 TIGER 2020 Edges (Hydro)

BARREN RIVER



Miles