



Commonwealth of Kentucky

County Election Planning Report

County Name	
MONTGOMERY	
Election	
2026 PRIMARY	
Person Completing this Form	
Name	CHRIS COCKRELL
Title	COUNTY CLERK
Phone	859 498 8700

For in-person voting on Election Day, the County Board of Elections will (check one):

- ☐ Consolidate precincts and precinct election officers (Requires Form SBE 74);
- ☒ Utilize the same consolidation plan that was used in a previous election (Requires previous Form SBE 74); or
- ☐ Open all existing precincts.

Excused in-person absentee voting will occur (check one):

- ☒ Within the County Clerk's office; or
- ☐ In another location within the county (Requires Form SBE 74).

No-excuse in-person absentee voting will occur (check one):

- ☐ Within the County Clerk's office; or
- ☒ In another location within the county (Requires Form SBE 74).

Absentee ballot drop-boxes will be located (minimum of one location required):

MONTGOMERY COUNTY CLERKS OFFICE LOCATED IN THE COURTHOUSE
1 COURT ST. SUITE #2, MT STERLING KY 40353

I have attached:

- ☒ All required Form SBE 74 sheets
- ☒ Relevant Maps
- ☐ Supplemental Narrative


Signature

10/13/25
Date



Commonwealth of Kentucky

Petition to Consolidate Precincts and Precinct Election Officers

County Name	
MONTGOMERY COUNTY	
Election	Dates of Voting
ABSENTEE EXCUSED (MAIL-IN) 03/04-05/13)	
Person Completing this Form	
Name	CHRIS COCKRELL
Title	COUNTY CLERK
About Voting Location	
Example: Tulip Poplar High, 123 Main Street, County High School	
Name	COUNTY CLERKS OFFICE (MAIL)
Address	1COURT ST. STE. #2 MT STERLING KY 40353
Type	COURTHOUSE
Number of Parking Spaces	Sufficient Parking Spaces?
100	YES
Voting Equipment to be Used	
Number	Type of equipment
1	HARP VERTI-PRINT
1	HARP VERTI-SCAN

Precincts in Voting Location	
Precinct name	Number of registered voters
ALL	20308

Narrative Plan (please attach additional sheets if needed)
1.) Why is this consolidation of these precincts desirable? <input checked="" type="checkbox"/> This is the same plan used in the last election
2.) In what manner will Precinct Officers be assigned? <input checked="" type="checkbox"/> This location will be fully staffed with election officials
3.) How will the voting location be publicized to voters? How will the location be noted as a "Vote Center?" Local paper and website
4.) How will the voting location serve as a focal point to meet the needs of a diverse community?



Commonwealth of Kentucky

Petition to Consolidate Precincts and Precinct Election Officers

County Name	
MONTGOMERY COUNTY	
Election	Dates of Voting
ABSENTEE EXCUSED (WALK-IN) 05/06-05/13	
Person Completing this Form	
Name	CHRIS COCKRELL
Title	COUNTY CLERK
About Voting Location	
<i>Example: Tulip Poplar High, 123 Main Street, County High School</i>	
Name	COUNTY CLERKS OFFICE
Address	1COURT ST. STE, #2 MT STERLING KY 40353
Type	COURTHOUSE
Number of Parking Spaces	Sufficient Parking Spaces?
100	YES
Voting Equipment to be Used	
Number	Type of equipment
1	HARP VERTI-PRINT
1	HARP VERTI-SCAN

Precincts in Voting Location	
Precinct name	Number of registered voters
ALL	20308

Narrative Plan <i>(please attach additional sheets if needed)</i>
1.) Why is this consolidation of these precincts desirable? <input checked="" type="checkbox"/> This is the same plan used in the last election
2.) In what manner will Precinct Officers be assigned? <input checked="" type="checkbox"/> This location will be fully staffed with election officials
3.) How will the voting location be publicized to voters? How will the location be noted as a "Vote Center?" Local paper and website
4.) How will the voting location serve as a focal point to meet the needs of a diverse community?



Commonwealth of Kentucky

Petition to Consolidate Precincts and Precinct Election Officers

County Name	
MONTGOMERY COUNTY	
Election	Dates of Voting
ABSENTEE NO-EXCUSE (05/14-05/16)	
Person Completing this Form	
Name	CHRIS COCKRELL
Title	COUNTY CLERK
About Voting Location	
<i>Example: Tulip Poplar High, 123 Main Street, County High School</i>	
Name	CLAY COMMUNITY CENTER
Address	3400 INDIAN MOUND DR
Type	COMMUNITY CENTER
Number of Parking Spaces	Sufficient Parking Spaces?
257	YES
Voting Equipment to be Used	
Number	Type of equipment
45	HARP VERTI-PRINT
2	HARP VERTI-SCAN
1	HARP ADA VERTI-SCAN

Precincts in Voting Location	
Precinct name	Number of registered voters
ALL	20308

Narrative Plan <i>(please attach additional sheets if needed)</i>
1.) Why is this consolidation of these precincts desirable? <input checked="" type="checkbox"/> This is the same plan used in the last election
2.) In what manner will Precinct Officers be assigned? <input checked="" type="checkbox"/> This location will be fully staffed with election officials
3.) How will the voting location be publicized to voters? How will the location be noted as a "Vote Center?" Local paper and website
4.) How will the voting location serve as a focal point to meet the needs of a diverse community?



Commonwealth of Kentucky

Petition to Consolidate Precincts and Precinct Election Officers

County Name	
MONTGOMERY COUNTY	
Election	Dates of Voting
PRIMARY ELECTION DAY 05/19	
Person Completing this Form	
Name	CHRIS COCKRELL
Title	COUNTY CLERK
About Voting Location	
<i>Example: Tulip Poplar High, 123 Main Street, County High School</i>	
Name	CLAY COMMUNITY CENTER
Address	3400 INDIAN MOUND DR
Type	COMMUNITY CENTER
Number of Parking Spaces	Sufficient Parking Spaces?
257	YES
Voting Equipment to be Used	
Number	Type of equipment
6	HARP VERTI-PRINT
2	HARP VERTI-SCAN
1	HARP ADA VERTI-SCAN

Precincts in Voting Location	
Precinct name	Number of registered voters
ALL	20308

Narrative Plan <i>(please attach additional sheets if needed)</i>
1.) Why is this consolidation of these precincts desirable? <input checked="" type="checkbox"/> This is the same plan used in the last election
2.) In what manner will Precinct Officers be assigned? <input checked="" type="checkbox"/> This location will be fully staffed with election officials
3.) How will the voting location be publicized to voters? How will the location be noted as a "Vote Center?"
Local paper and website
4.) How will the voting location serve as a focal point to meet the needs of a diverse community?



Commonwealth of Kentucky

Petition to Consolidate Precincts and Precinct Election Officers

County Name	
MONTGOMERY COUNTY	
Election	Dates of Voting
PRIMARY ELECTION DAY 05/19	
Person Completing this Form	
Name	CHRIS COCKRELL
Title	COUNTY CLERK
About Voting Location	
<i>Example: Tulip Poplar High, 123 Main Street, County High School</i>	
Name	CAMARGO ELEMENTARY
Address	4307 CAMARGO RD
Type	ELEMENTARY SCHOOL
Number of Parking Spaces	Sufficient Parking Spaces?
150	YES
Voting Equipment to be Used	
Number	Type of equipment
4	HARP VERTI-PRINT
2	HARP VERTI-SCAN
1	HARP ADA VERTI-SCAN

Precincts in Voting Location	
Precinct name	Number of registered voters
ALL	20308

Narrative Plan <i>(please attach additional sheets if needed)</i>
1.) Why is this consolidation of these precincts desirable? <input checked="" type="checkbox"/> This is the same plan used in the last election
2.) In what manner will Precinct Officers be assigned? <input checked="" type="checkbox"/> This location will be fully staffed with election officials
3.) How will the voting location be publicized to voters? How will the location be noted as a "Vote Center?" Local paper and website
4.) How will the voting location serve as a focal point to meet the needs of a diverse community?



Commonwealth of Kentucky

Petition to Consolidate Precincts and Precinct Election Officers

County Name	
MONTGOMERY	
Election	Dates of Voting
PRIMARY ELECTION 05/19	
Person Completing this Form	
Name	CHRIS COCKRELL
Title	COUNTY CLERK
About Voting Location	
<i>Example: Tulip Poplar High, 123 Main Street, County High School</i>	
Name	NORTHVIEW ELEMENTARY
Address	1040 MAYSVILLE RD
Type	ELEMENTARY SCHOLL
Number of Parking Spaces	Sufficient Parking Spaces?
150	YES
Voting Equipment to be Used	
Number	Type of equipment
3	HARP VERTI-PRINT
2	HARP VERTI-SCAN
1	HARP ADA VERTI-SCAN

Precincts in Voting Location	
Precinct name	Number of registered voters
ALL	20308

Narrative Plan <i>(please attach additional sheets if needed)</i>
1.) Why is this consolidation of these precincts desirable? <input checked="" type="checkbox"/> This is the same plan used in the last election
2.) In what manner will Precinct Officers be assigned? <input checked="" type="checkbox"/> This location will be fully staffed with election officials
3.) How will the voting location be publicized to voters? How will the location be noted as a "Vote Center?" Local paper and website
4.) How will the voting location serve as a focal point to meet the needs of a diverse community?



Commonwealth of Kentucky

Petition to Consolidate Precincts and Precinct Election Officers

County Name	
MONTGOMERY COUNTY	
Election	Dates of Voting
PRIMARY ELECTION DAY 05/19	
Person Completing this Form	
Name	CHRIS COCKRELL
Title	COUNTY CLERK
About Voting Location	
Example: Tulip Poplar High, 123 Main Street, County High School	
Name	MT STERLING ELEMENTARY
Address	6601 INDIAND MOUND DR
Type	ELEMENTARY SCHOOL
Number of Parking Spaces	Sufficient Parking Spaces?
150	YES
Voting Equipment to be Used	
Number	Type of equipment
2	HARP VERTI-PRINT
1	HARP VERTI-SCAN
1	HARP ADA VERTI-SCAN

Precincts in Voting Location	
Precinct name	Number of registered voters
ALL	20308

Narrative Plan (please attach additional sheets if needed)
1.) Why is this consolidation of these precincts desirable? <input checked="" type="checkbox"/> This is the same plan used in the last election
2.) In what manner will Precinct Officers be assigned? <input checked="" type="checkbox"/> This location will be fully staffed with election officials
3.) How will the voting location be publicized to voters? How will the location be noted as a "Vote Center?"
Local paper and website
4.) How will the voting location serve as a focal point to meet the needs of a diverse community?



Commonwealth of Kentucky

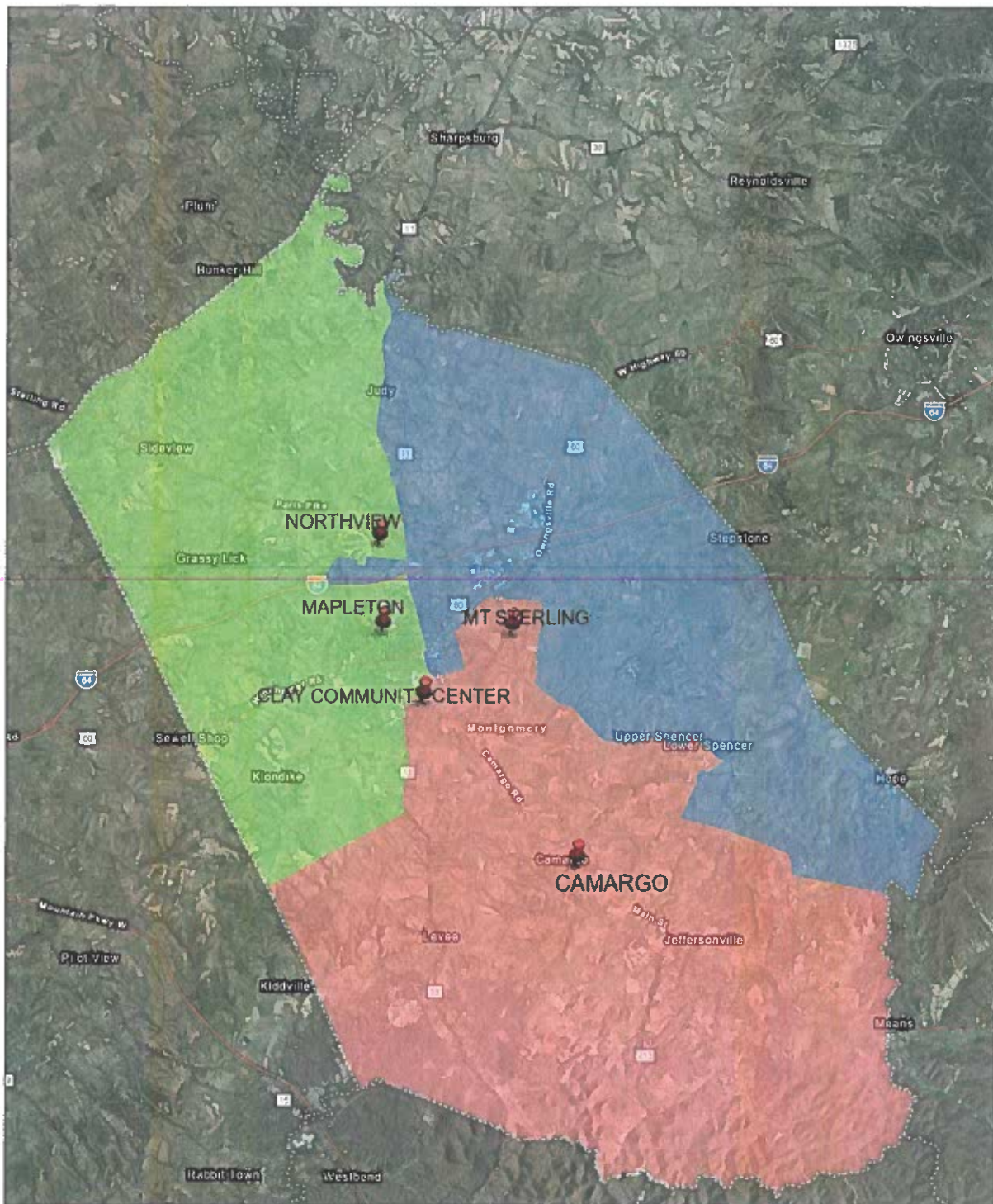
Petition to Consolidate Precincts and Precinct Election Officers

County Name	
MONTGOMERY COUNTY	
Election	Dates of Voting
PRIMARY ELECTION DAY 05/19	
Person Completing this Form	
Name	CHRIS COCKRELL
Title	COUNTY CLERK
About Voting Location	
<i>Example: Tulip Poplar High, 123 Main Street, County High School</i>	
Name	MAPLETON ELEMENTARY
Address	809 INDIAN MOUND DR
Type	ELEMENTARY SCHOOL
Number of Parking Spaces	Sufficient Parking Spaces?
159	YES
Voting Equipment to be Used	
Number	Type of equipment
2	HARP VERTI-PRINT
1	HARP VERTI-SCAN
1	HARP ADA VERTI-SCAN

Precincts in Voting Location	
Precinct name	Number of registered voters
ALL	20308

Narrative Plan <i>(please attach additional sheets if needed)</i>
1.) Why is this consolidation of these precincts desirable? <input checked="" type="checkbox"/> This is the same plan used in the last election
2.) In what manner will Precinct Officers be assigned? <input checked="" type="checkbox"/> This location will be fully staffed with election officials
3.) How will the voting location be publicized to voters? How will the location be noted as a "Vote Center?" Local paper and website
4.) How will the voting location serve as a focal point to meet the needs of a diverse community?

ArcGIS Web Map

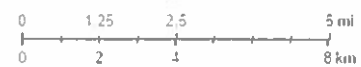


7/22/2025, 8:38:51 AM

Precinct/Commissioner Boundaries

- 1
- 2
- 3

1 144,448



kyFromAbove: Partners, Earthstar Geographics, Sources:
Esri, TomTom, Garmin, FAO, NOAA, USGS, ©
OpenStreetMap contributors, and the GIS User Community
Esri, HERE, Garmin, USGS, NGA, EPA, USDA, NPS

ArcGIS Web App Builder
kyFromAbove: Partners | Esri, HERE, Garmin, USGS, NGA, EPA, USDA, NPS | Earthstar Geographics | Commonwealth of Kentucky | Esri, TomTom, Garmin, SafeGraph, GeoTechnologies, Inc., METI, NASA, USGS, EPA