



Commonwealth of Kentucky

County Election Planning Report

County Name	
NELSON	
Election	
PRIMARY & GENERAL 2026	
Person Completing this Form	
Name	JEANETTE HALL SIDEBOTTOM
Title	COUNTY CLERK
Phone	502-348-1828

For in-person voting on Election Day, the County Board of Elections will (check one):

- ☒ Consolidate precincts and precinct election officers (Requires Form SBE 74);
- ☐ Utilize the same consolidation plan that was used in a previous election (Requires previous Form SBE 74); or
- ☐ Open all existing precincts.

Excused in-person absentee voting will occur (check one):

- ☐ Within the County Clerk's office; or
- ☒ In another location within the county (Requires Form SBE 74).

No-excuse in-person absentee voting will occur (check one):

- ☐ Within the County Clerk's office; or
- ☒ In another location within the county (Requires Form SBE 74).


Absentee ballot drop-boxes will be located (minimum of one location required):

COUNTY CLERKS OFFICE (INSIDE ELECTION OFFICE) 113 E STEPHEN FOSTER AVE BARDSTOWN KY 40004

COUNTY CLERKS OFFICE (OUTSIDE BY FRONT DOOR) 113 E STEPHEN FOSTER AVE BARDSTOWN KY 40004

I have attached:

- ☒ All required Form SBE 74 sheets
- ☒ Relevant Maps
- ☒ Supplemental Narrative

 12/9/25
Signature Date



Jeanette Hall Sidebottom
Clerk Nelson County
113 E Stephen Foster Ave
Bardstown, KY 40004
(502) 348-1820

December 10, 2025

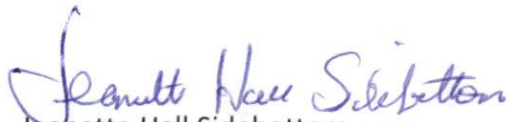
The enclosed plan will be used for any Election that will be held in 2026. This plan only two changes from that of our 2024 General Election Plan. The Nelson County Board of Elections has voted that there will now be 9 vote centers open across the county on Election Days. Excused In-Person Voting will not change, and No-excuse Early Voting will remain the same with the addition of a second location for the General Election Only.

The following will further explain our plan:

1. Each location will be a vote center.
2. 6 (including the Armory in the General) locations will either be in Bardstown (our largest city and county seat), or within 2 miles of the corporate limits. The other 4 will be in outlying areas of Nelson County. 1 in each area of population in the county (Bloomfield, Cox's Creek, New Haven, and Boston)
3. Each location will have 2 Verity Scans, 1 Verity Duo, at least 2 Verity Prints and 4 Poll Books.
4. Every voting location has been used in a previous election.
5. We anticipate staffing each location with a minimum of 6 Precinct Officers. Ideally, 7-8 per location, depending on availability. Each location will continue to have a Deputy from the Clerk's Office there to act as point person on Election Day.
6. We are planning to send postcards to every registered voter household in Nelson County to make them aware of any changes, as well as listing the information on our website.
7. Excused In-Person Voting will continue to be held at the Nelson Co Civic Center from 8am-4pm and No Excuse In-Person Voting will continue to be held at the Nelson Co Public Library for the 2026 Primary & General Election Thurs-Fri 8am-6pm and Sat 8am-

4pm. The addition of a second location, the National Guard Armory, for No Excuse In-Person Voting will be new for the 2026 General Election Thurs-Fri 8am-6pm and Sat 8am-4pm. A sheet for each location is included in our plan.

Respectfully submitted,

A handwritten signature in blue ink that reads "Jeanette Hall Sidebottom". The signature is written in a cursive style with a large initial "J".

Jeanette Hall Sidebottom

Nelson County Clerk



Commonwealth of Kentucky

Petition to Consolidate Precincts and Precinct Election Officers

County Name	
NELSON	
Election	Dates of Voting
PRIMARY & GENERAL 2026 5/6-5/13 & 10/21-10/28	
Person Completing this Form	
Name	JEANETTE HALL SIDEBOTTOM
Title	COUNTY CLERK
About Voting Location	
<i>Example: Tulip Poplar High, 123 Main Street, County High School</i>	
Name	NELSON CO CIVIC CENTER
Address	321 S THIRD ST BARDSTOWN KY 40004
Type	PUBLIC BUILDING
Number of Parking Spaces	Sufficient Parking Spaces?
60	YES
Voting Equipment to be Used	
Number	Type of equipment
1	HART VERITY SCAN
1	HART VERITY PRINT
1	HART DUO

Precincts in Voting Location	
Precinct name	Number of registered voters
ALL	35507

Narrative Plan <i>(please attach additional sheets if needed)</i>
1.) Why is this consolidation of these precincts desirable? <input checked="" type="checkbox"/> This is the same plan used in the last election
Increases the size of our voting room and is more easily accessible for voters
2.) In what manner will Precinct Officers be assigned? <input checked="" type="checkbox"/> This location will be fully staffed with election officials
First priority will be given to the election workers who served in the 2024 elections
3.) How will the voting location be publicized to voters? How will the location be noted as a "Vote Center?"
Through the County Clerk's social media & website and through local media
4.) How will the voting location serve as a focal point to meet the needs of a diverse community?
Central location in our county seat and largest city, Bardstown. A large event room and enough parking to accommodate voters who need to utilize Excused In-Person Voting.



Commonwealth of Kentucky

Petition to Consolidate Precincts and Precinct Election Officers

County Name	
NELSON	
Election	Dates of Voting
PRIMARY & GENERAL 2026 5/14-5/16 & 10/29-10/31	
Person Completing this Form	
Name	JEANETTE HALL SIDEBOTTOM
Title	COUNTY CLERK
About Voting Location	
<i>Example: Tulip Poplar High, 123 Main Street, County High School</i>	
Name	NELSON CO PUBLIC LIBRARY
Address	201 CATHEDRAL MANOR BARDSTOWN KY 40004
Type	PUBLIC BUILDING
Number of Parking Spaces	Sufficient Parking Spaces?
60	YES
Voting Equipment to be Used	
Number	Type of equipment
2	HART VERITY SCAN
3	HART VERITY PRINT
1	HART DUO

Precincts in Voting Location	
Precinct name	Number of registered voters
ALL	35507

Narrative Plan <i>(please attach additional sheets if needed)</i>
1.) Why is this consolidation of these precincts desirable? <input checked="" type="checkbox"/> This is the same plan used in the last election
Voters have been using this location since 2020 for Early Voting. More space for voters than the County Clerk's office.
2.) In what manner will Precinct Officers be assigned? <input checked="" type="checkbox"/> This location will be fully staffed with election officials
First priority will be given to the election workers who served in the 2024 elections
3.) How will the voting location be publicized to voters? How will the location be noted as a "Vote Center?"
Through the County Clerk's social media & website and through local media
4.) How will the voting location serve as a focal point to meet the needs of a diverse community?
Central location in our county seat and largest city, Bardstown. A large community room and parking lot to accommodate voters during Early Voting.



Commonwealth of Kentucky

Petition to Consolidate Precincts and Precinct Election Officers

County Name	
NELSON	
Election	Dates of Voting
GENERAL 2026 10/29-10/31	
Person Completing this Form	
Name	JEANETTE HALL SIDEBOTTOM
Title	COUNTY CLERK
About Voting Location	
<i>Example: Tulip Poplar High, 123 Main Street, County High School</i>	
Name	NATIONAL GUARD ARMORY
Address	1020 N 3RD ST BARDSTOWN KY 40004
Type	ARMY RESERVE BUILDING
Number of Parking Spaces	Sufficient Parking Spaces?
50	YES
Voting Equipment to be Used	
Number	Type of equipment
2	HART VERITY SCAN
2	HART VERITY PRINT
1	HART DUO

Precincts in Voting Location	
Precinct name	Number of registered voters
ALL	35507

Narrative Plan <i>(please attach additional sheets if needed)</i>
1.) Why is this consolidation of these precincts desirable? <input type="checkbox"/> This is the same plan used in the last election
Located on the north side of Bardstown, our largest and most central city. Easily visible and accessible from a main road. More space for voters than the County Clerks Office and provides a second early voting location for voters on the opposite end of town.
2.) In what manner will Precinct Officers be assigned? <input checked="" type="checkbox"/> This location will be fully staffed with election officials
First Priority will be given to the election workers who served in the 2024 elections.
3.) How will the voting location be publicized to voters? How will the location be noted as a "Vote Center?"
Through the County Clerk's social media & website and through local media
4.) How will the voting location serve as a focal point to meet the needs of a diverse community?
Located on a main road on the north side of town commonly used by voters commuting to and from work. It has a large room and parking lot. The addition of this location will better accommodate voters by decreasing long lines and wait times.



Commonwealth of Kentucky

Petition to Consolidate Precincts and Precinct Election Officers

County Name	
NELSON	
Election	Dates of Voting
PRIMARY & GENERAL 2026 5/19 & 11/3	
Person Completing this Form	
Name	JEANETTE HALL SIDEBOTTOM
Title	COUNTY CLERK
About Voting Location	
<i>Example: Tulip Poplar High, 123 Main Street, County High School</i>	
Name	NELSON CO PUBLIC LIBRARY
Address	201 CATHEDRAL MANOR BARDSTOWN KY 40004
Type	PUBLIC BUILDING
Number of Parking Spaces	Sufficient Parking Spaces?
60	YES
Voting Equipment to be Used	
Number	Type of equipment
2	HART VERITY SCAN
3	HART VERITY PRINT
1	HART DUO

Precincts in Voting Location	
Precinct name	Number of registered voters
ALL	35507

Narrative Plan <i>(please attach additional sheets if needed)</i>
1.) Why is this consolidation of these precincts desirable? <input checked="" type="checkbox"/> This is the same plan used in the last election
Voters have been using this location since 2020 for Early Voting. More space for voters than the County Clerk's office.
2.) In what manner will Precinct Officers be assigned? <input checked="" type="checkbox"/> This location will be fully staffed with election officials
First priority will be given to the election workers who served in the 2024 elections
3.) How will the voting location be publicized to voters? How will the location be noted as a "Vote Center?"
Through the County Clerk's social media & website and through local media
4.) How will the voting location serve as a focal point to meet the needs of a diverse community?
Central location in our county seat and largest city, Bardstown. A large community room and parking lot to accommodate voters on Election Day.



Commonwealth of Kentucky

Petition to Consolidate Precincts and Precinct Election Officers

County Name	
NELSON	
Election	Dates of Voting
PRIMARY & GENERAL 2026 5/19 & 11/3	
Person Completing this Form	
Name	JEANETTE HALL SIDEBOTTOM
Title	COUNTY CLERK
About Voting Location	
Example: Tulip Poplar High, 123 Main Street, County High School	
Name	PARKWAY BAPTIST CHURCH
Address	2580 SPRINGFIELD RD BARDSTOWN KY 40004
Type	CHURCH
Number of Parking Spaces	Sufficient Parking Spaces?
200	YES
Voting Equipment to be Used	
Number	Type of equipment
2	HART VERITY SCAN
2	HART VERITY PRINT
1	HART DUO

Precincts in Voting Location	
Precinct name	Number of registered voters
ALL	35507

Narrative Plan (please attach additional sheets if needed)
1.) Why is this consolidation of these precincts desirable? <input checked="" type="checkbox"/> This is the same plan used in the last election
Location has a large parking lot and a gym that can accommodate voters
2.) In what manner will Precinct Officers be assigned? <input checked="" type="checkbox"/> This location will be fully staffed with election officials
First priority will be given to the election workers who served in the 2024 elections
3.) How will the voting location be publicized to voters? How will the location be noted as a "Vote Center?"
Through the County Clerk's social media & website and through local media
4.) How will the voting location serve as a focal point to meet the needs of a diverse community?
Located on the eastern side of Bardstown and sits right off the Bluegrass Pkwy. Many Nelson County voters use the parkway for commuting to and from work, thus making it convenient for them to vote without having to make an extra trip or go out of their way.



Commonwealth of Kentucky

Petition to Consolidate Precincts and Precinct Election Officers

County Name	
NELSON	
Election	Dates of Voting
PRIMARY & GENERAL 2026 5/19 & 11/3	
Person Completing this Form	
Name	JEANETTE HALL SIDEBOTTOM
Title	COUNTY CLERK
About Voting Location	
<i>Example: Tulip Poplar High, 123 Main Street, County High School</i>	
Name	BARDSTOWN ELEMENTARY SCHOOL
Address	1345 TEMPLIN AVE BARDSTOWN KY 40004
Type	PUBLIC SCHOOL
Number of Parking Spaces	Sufficient Parking Spaces?
99	YES
Voting Equipment to be Used	
Number	Type of equipment
2	HART VERITY SCAN
3	HART VERITY PRINT
1	HART DUO

Precincts in Voting Location	
Precinct name	Number of registered voters
ALL	35507

Narrative Plan <i>(please attach additional sheets if needed)</i>
1.) Why is this consolidation of these precincts desirable? <input checked="" type="checkbox"/> This is the same plan used in the last election
Located on the northwest side of Bardstown, our largest and most central city. Easily visible and accessible from a main road, with a large amount of quality parking.
2.) In what manner will Precinct Officers be assigned? <input checked="" type="checkbox"/> This location will be fully staffed with election officials
First priority will be given to the election workers who served in the 2024 elections
3.) How will the voting location be publicized to voters? How will the location be noted as a "Vote Center?"
Through the County Clerk's social media & website and through local media
4.) How will the voting location serve as a focal point to meet the needs of a diverse community?
In the past, we used 3 schools located within a 3 mile radius of this facility. Using this school will provide a much better location for our voters and election workers, due to its visibility and accessibility.



Commonwealth of Kentucky

Petition to Consolidate Precincts and Precinct Election Officers

County Name	
NELSON	
Election	Dates of Voting
PRIMARY & GENERAL 2026 5/19 & 11/3	
Person Completing this Form	
Name	JEANETTE HALL SIDEBOTTOM
Title	COUNTY CLERK
About Voting Location	
<i>Example: Tulip Poplar High, 123 Main Street, County High School</i>	
Name	NEW HAVEN SCHOOL
Address	389 HIGH ST NEW HAVEN KY 40051
Type	PUBLIC SCHOOL
Number of Parking Spaces	Sufficient Parking Spaces?
99	YES
Voting Equipment to be Used	
Number	Type of equipment
2	HART VERITY SCAN
2	HART VERITY PRINT
1	HART DUO

Precincts in Voting Location	
Precinct name	Number of registered voters
ALL	35507

Narrative Plan <i>(please attach additional sheets if needed)</i>
1.) Why is this consolidation of these precincts desirable? <input checked="" type="checkbox"/> This is the same plan used in the last election
New Haven is the largest city in the southern end of Nelson County. it is home to the only public building large enough to accommodate voting
2.) In what manner will Precinct Officers be assigned? <input checked="" type="checkbox"/> This location will be fully staffed with election officials
First priority will be given to the election workers who served in the 2024 elections
3.) How will the voting location be publicized to voters? How will the location be noted as a "Vote Center?"
Through the County Clerk's social media & website and through local media
4.) How will the voting location serve as a focal point to meet the needs of a diverse community?
The school is the only public building in the area with facilities large enough to accommodate the equipment needed and voter turnout on Election Day.



Commonwealth of Kentucky

Petition to Consolidate Precincts and Precinct Election Officers

County Name	
NELSON	
Election	Dates of Voting
PRIMARY & GENERAL 2026 5/19 & 11/3	
Person Completing this Form	
Name	JEANETTE HALL SIDEBOTTOM
Title	COUNTY CLERK
About Voting Location	
<i>Example: Tulip Poplar High, 123 Main Street, County High School</i>	
Name	COXS CREEK ELEMENTARY SCHOOL
Address	5635 LOUISVILLE RD COXS CREEK KY 40013
Type	PUBLIC SCHOOL
Number of Parking Spaces	Sufficient Parking Spaces?
78	YES
Voting Equipment to be Used	
Number	Type of equipment
2	HART VERITY SCAN
2	HART VERITY PRINT
1	HART DUO

Precincts in Voting Location	
Precinct name	Number of registered voters
ALL	35507

Narrative Plan <i>(please attach additional sheets if needed)</i>
1.) Why is this consolidation of these precincts desirable? <input checked="" type="checkbox"/> This is the same plan used in the last election
The voting location will be in the school gym, which can easily accommodate voters from the North Central area of the county
2.) In what manner will Precinct Officers be assigned? <input checked="" type="checkbox"/> This location will be fully staffed with election officials
First priority will be given to the election workers who served in the 2024 elections
3.) How will the voting location be publicized to voters? How will the location be noted as a "Vote Center?"
Through the County Clerk's social media & website and through local media
4.) How will the voting location serve as a focal point to meet the needs of a diverse community?
This is the largest public building in the area. It is on a main highway that many residents use when commuting, which makes it convenient for them to vote on their way to or from work.



Commonwealth of Kentucky

Petition to Consolidate Precincts and Precinct Election Officers

County Name	
NELSON	
Election	Dates of Voting
PRIMARY & GENERAL 2026 5/19 & 11/3	
Person Completing this Form	
Name	JEANETTE HALL SIDEBOTTOM
Title	COUNTY CLERK
About Voting Location	
<i>Example: Tulip Poplar High, 123 Main Street, County High School</i>	
Name	BLOOMFIELD MIDDLE SCHOOL
Address	96 ARNOLD LN BLOOMFIELD KY 40008
Type	PUBLIC SCHOOL
Number of Parking Spaces	Sufficient Parking Spaces?
94	YES
Voting Equipment to be Used	
Number	Type of equipment
2	HART VERITY SCAN
2	HART VERITY PRINT
1	HART DUO

Precincts in Voting Location	
Precinct name	Number of registered voters
ALL	35507

Narrative Plan <i>(please attach additional sheets if needed)</i>
1.) Why is this consolidation of these precincts desirable? <input checked="" type="checkbox"/> This is the same plan used in the last election
Bloomfield is the largest city in northeastern Nelson County. The Middle School is a large public building that has been used for years to as a voting location.
2.) In what manner will Precinct Officers be assigned? <input checked="" type="checkbox"/> This location will be fully staffed with election officials
First priority will be given to the election workers who served in the 2024 elections
3.) How will the voting location be publicized to voters? How will the location be noted as a "Vote Center?"
Through the County Clerk's social media & website and through local media
4.) How will the voting location serve as a focal point to meet the needs of a diverse community?
Most voters in the area are very familiar with this school and its location. Voters have been using this building since 2022. It is large enough to accommodate voter turnout on Election Day.



Commonwealth of Kentucky

Petition to Consolidate Precincts and Precinct Election Officers

County Name	
NELSON	
Election	Dates of Voting
PRIMARY & GENERAL 2026 5/19 & 11/3	
Person Completing this Form	
Name	JEANETTE HALL SIDEBOTTOM
Title	COUNTY CLERK
About Voting Location	
<i>Example: Tulip Poplar High, 123 Main Street, County High School</i>	
Name	NELSON COUNTY HIGH SCHOOL
Address	1070 BLOOMFIELD RD BARDSTOWN KY 40004
Type	PUBLIC SCHOOL
Number of Parking Spaces	Sufficient Parking Spaces?
293	YES
Voting Equipment to be Used	
Number	Type of equipment
2	HART VERITY SCAN
2	HART VERITY PRINT
1	HART DUO

Precincts in Voting Location	
Precinct name	Number of registered voters
ALL	35507

Narrative Plan <i>(please attach additional sheets if needed)</i>
1.) Why is this consolidation of these precincts desirable? <input checked="" type="checkbox"/> This is the same plan used in the last election
Facilities and parking large enough to handle a high voter turnout on Election Day. It is located in the northeastern end of Bardstown.
2.) In what manner will Precinct Officers be assigned? <input checked="" type="checkbox"/> This location will be fully staffed with election officials
First priority will be given to the election workers who served in the 2024 elections
3.) How will the voting location be publicized to voters? How will the location be noted as a "Vote Center?"
Through the County Clerk's social media & website and through local media
4.) How will the voting location serve as a focal point to meet the needs of a diverse community?
This school is located in a highly populated area which will make it convenient for many voters.



Commonwealth of Kentucky

Petition to Consolidate Precincts and Precinct Election Officers

County Name	
NELSON	
Election	Dates of Voting
PRIMARY & GENERAL 2026 5/19 & 11/3	
Person Completing this Form	
Name	JEANETTE HALL SIDEBOTTOM
Title	COUNTY CLERK
About Voting Location	
<i>Example: Tulip Poplar High, 123 Main Street, County High School</i>	
Name	BOSTON SCHOOL
Address	130 WILSON CREEK RD BOSTON KY 40107
Type	PUBLIC SCHOOL
Number of Parking Spaces	Sufficient Parking Spaces?
76	YES
Voting Equipment to be Used	
Number	Type of equipment
2	HART VERITY SCAN
2	HART VERITY PRINT
1	HART DUO

Precincts in Voting Location	
Precinct name	Number of registered voters
ALL	35507

Narrative Plan <i>(please attach additional sheets if needed)</i>
1.) Why is this consolidation of these precincts desirable? <input checked="" type="checkbox"/> This is the same plan used in the last election
This is the only city in the western area of the county. Has facilities large enough to accommodate voting on Election Day
2.) In what manner will Precinct Officers be assigned? <input checked="" type="checkbox"/> This location will be fully staffed with election officials
First priority will be given to the election workers who served in the 2024 elections
3.) How will the voting location be publicized to voters? How will the location be noted as a "Vote Center?"
Through the County Clerk's social media & website and through local media
4.) How will the voting location serve as a focal point to meet the needs of a diverse community?
The city of Boston is at the far west side of the county. By using this school as a voting location, it greatly reduces the distance some voters would otherwise have to travel in order to vote.



Commonwealth of Kentucky

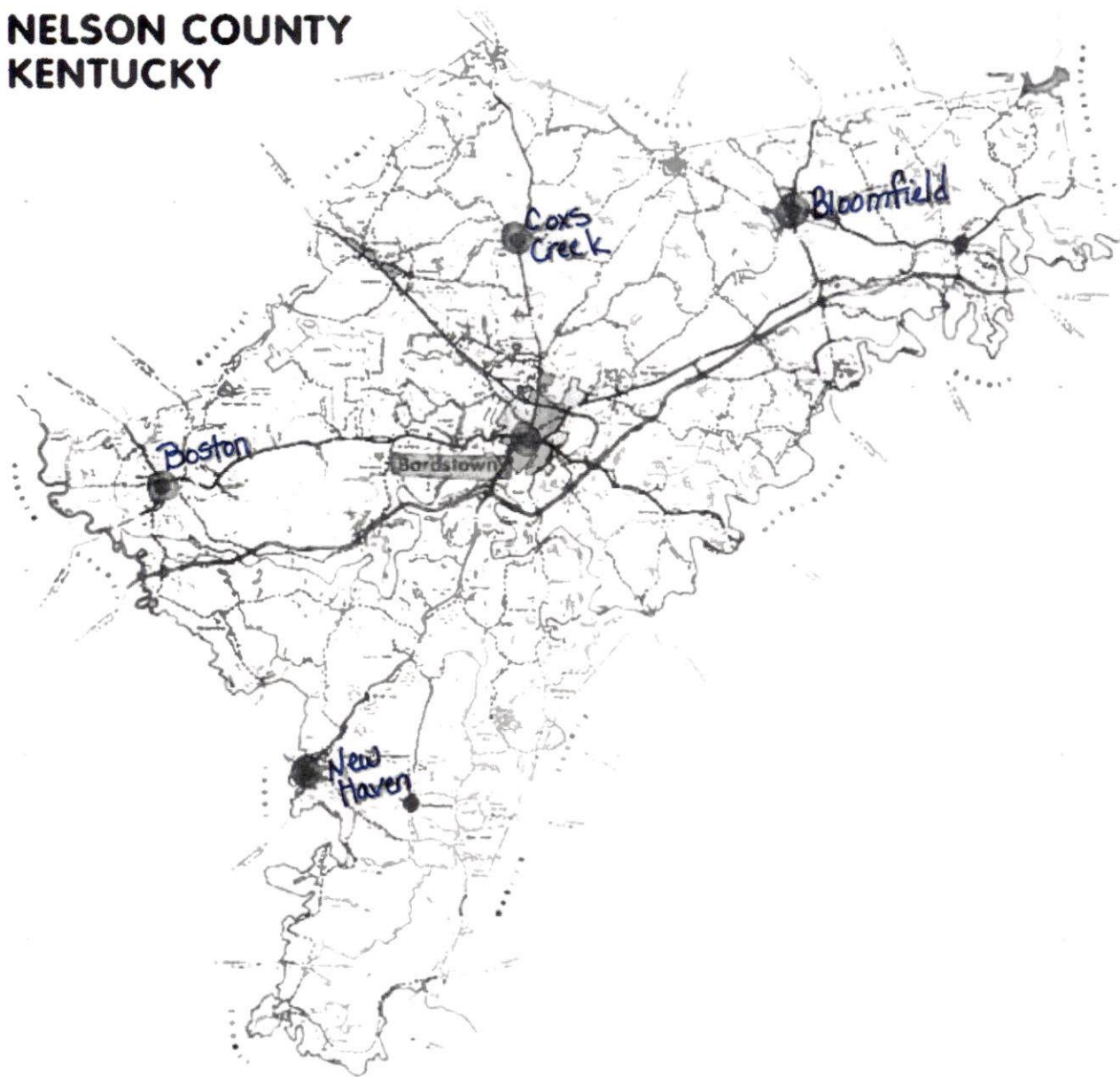
Petition to Consolidate Precincts and Precinct Election Officers

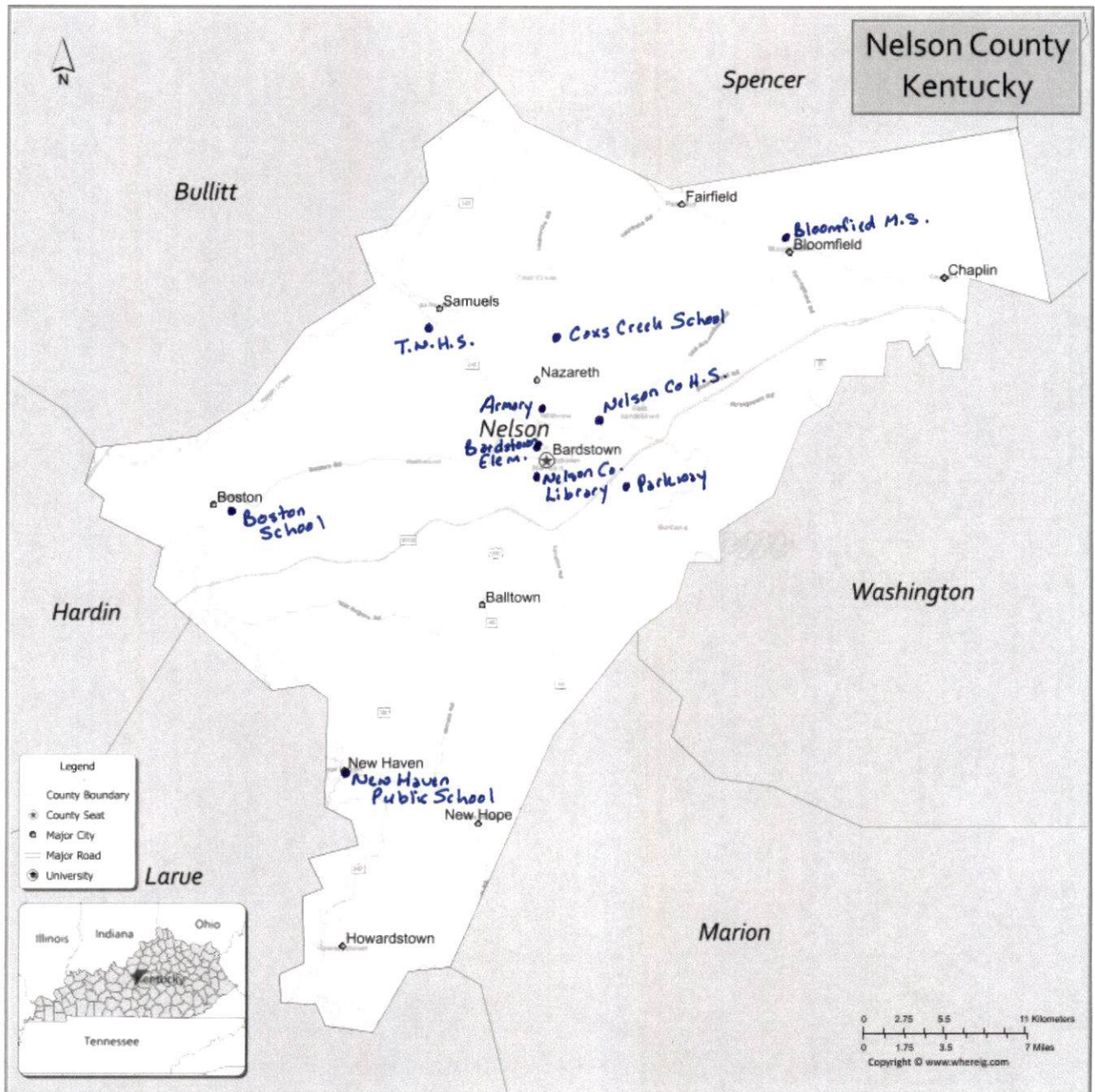
County Name	
NELSON	
Election	Dates of Voting
PRIMARY & GENERAL 2026 5/19 & 11/3	
Person Completing this Form	
Name	JEANETTE HALL SIDEBOTTOM
Title	COUNTY CLERK
About Voting Location	
<i>Example: Tulip Poplar High, 123 Main Street, County High School</i>	
Name	THOMAS NELSON HIGH SCHOOL
Address	150 GENERALS BLVD BARDSTOWN KY 40004
Type	PUBLIC SCHOOL
Number of Parking Spaces	Sufficient Parking Spaces?
281	YES
Voting Equipment to be Used	
Number	Type of equipment
2	HART VERITY SCAN
2	HART VERITY PRINT
1	HART DUO

Precincts in Voting Location	
Precinct name	Number of registered voters
ALL	35507

Narrative Plan <i>(please attach additional sheets if needed)</i>
1.) Why is this consolidation of these precincts desirable? <input checked="" type="checkbox"/> This is the same plan used in the last election
Located on the west side of the county. Easily visible and accessible from a main road used for commutingA large space to accommodate voters on that side of the county.
2.) In what manner will Precinct Officers be assigned? <input checked="" type="checkbox"/> This location will be fully staffed with election officials
First priority will be given to the election workers who served in the 2024 elections
3.) How will the voting location be publicized to voters? How will the location be noted as a "Vote Center?"
Through the County Clerk's social media & website and through local media
4.) How will the voting location serve as a focal point to meet the needs of a diverse community?
Located on a main road commonly used for commuting on the west side of the county. This location has a large area and parking lot. The addition of this location will better accommodate voters by decreasing long lines and wait times and give them the convenience of being able to vote on their way to or from work.

NELSON COUNTY KENTUCKY





Google Maps

Nelson County Public Library, 201 Cathedral Manor, Bardstovn, KY Drive 14.0 miles, 31 min
40004 to Parkway Baptist Church, 2580 Springfield Rd, Bardstovn, KY 40004

