



Commonwealth of Kentucky

County Election Planning Report

County Name	
Spencer	
Election	
2026 Primary election- May 19, 2026	
Person Completing this Form	
Name	Lynn Hesselbrock
Title	Spencer County Board of Elections Chair/County Clerk
Phone	502-477-3215

For in-person voting on Election Day, the County Board of Elections will (check one):

- ☐ Consolidate precincts and precinct election officers (Requires Form SBE 74);
- ☒ Utilize the same plan that was used in a previous election (Requires current election dates on Form SBE 74); or
- ☐ Open all existing precincts.

Excused in-person absentee voting will occur (check one):

- ☒ Within the County Clerk's office; or
- ☐ In another location within the county (Requires Form SBE 74).

No-excuse in-person absentee voting will occur (check one):

- ☐ Within the County Clerk's office; or
- ☒ In another location within the county (Requires Form SBE 74).


Absentee ballot drop-boxes will be located (minimum of one location required):

2 West Main Street front porch

2 West Main Street- inside Clerk's office.

I have attached:

- ☒ All required Form SBE 74 sheets
- ☒ Relevant Maps
- ☒ Any desired supplemental narrative


Signature
12/4/2025
Date
Please email to CountyElectionPlans@ky.gov



Commonwealth of Kentucky

Petition to Consolidate Precincts and Precinct Election Officers

County Name	
Spencer	
Election	Dates of Voting
2026 Primary/ 6 day excused	
Person Completing this Form	
Name	Lynn Hesselbrock
Title	SCBOE Chair/County Clerk
About Voting Location	
<i>Example: Tulip Poplar High, 123 Main Street, County High School</i>	
Name	Spencer County Clerk's Office
Address	2 West Main Street
Type	Clerk's Office
Number of Parking Spaces	Sufficient Parking Spaces?
48	yes
Voting Equipment to be Used	
Number	Type of equipment
1	Verity Duo
1	Verity Scan/print
1	E Pollbook

Precincts in Voting Location	
Precinct name	Number of registered voters
All	

Narrative Plan <i>(please attach additional sheets if needed)</i>
1.) Why is this consolidation of these precincts desirable? <input checked="" type="checkbox"/> This is the same plan used in the last election Centrally located/business/heavily utilized
2.) In what manner will Precinct Officers be assigned? <input checked="" type="checkbox"/> This location will be fully staffed with election officials Party parity will be observed and we will staff with 1 Democrat and 1 Republican PEO
3.) How will the voting location be publicized to voters? How will the location be noted as a "Vote Center?" Local newspaper, website/social media/postcards
4.) How will the voting location serve as a focal point to meet the needs of a diverse community? Most all residents utilize the County Clerk's office for vehicle transactions, recordings or other services.



Commonwealth of Kentucky

Petition to Consolidate Precincts and Precinct Election Officers

County Name	
Spencer	
Election	Dates of Voting
2026 Primary/ 3 day early	
Person Completing this Form	
Name	Lynn Hesselbrock
Title	SCBOE Chair/County Clerk
About Voting Location	
<i>Example: Tulip Poplar High, 123 Main Street, County High School</i>	
Name	TSCFD Station Number 2
Address	4901 Taylorsville Road
Type	Fire Station
Number of Parking Spaces	Sufficient Parking Spaces?
40	yes
Voting Equipment to be Used	
Number	Type of equipment
1	Verity Duo
1	Verity Scan/print
1	E Pollbook

Precincts in Voting Location	
Precinct name	Number of registered voters
All	

Narrative Plan *(please attach additional sheets if needed)*

1.) Why is this consolidation of these precincts desirable?

☒ This is the same plan used in the last election

Well known location. A very well used location that serves residents from all areas of the County.

2.) In what manner will Precinct Officers be assigned?

☒ This location will be fully staffed with election officials

4 Precinct Election Officers with the mandated party parity. 2 Democratic and 2 Republican Precinct Officers will serve.

3.) How will the voting location be publicized to voters? How will the location be noted as a "Vote Center?"

Local newspaper, website/social media/postcards

4.) How will the voting location serve as a focal point to meet the needs of a diverse community?

Same location as used in the past 4 elections. People are very familiar with this location..



Commonwealth of Kentucky

Petition to Consolidate Precincts and Precinct Election Officers

County Name	
Spencer	
Election	Dates of Voting
2026 Primary/ 3 day early	
Person Completing this Form	
Name	Lynn Hesselbrock
Title	SCBOE Chair/County Clerk
About Voting Location	
<i>Example: Tulip Poplar High, 123 Main Street, County High School</i>	
Name	Spencer County Library
Address	168 Taylorsville Road
Type	Library
Number of Parking Spaces	Sufficient Parking Spaces?
50	yes
Voting Equipment to be Used	
Number	Type of equipment
1	Verity Duo
1	Verity Scan/print
1	E Pollbook

Precincts in Voting Location	
Precinct name	Number of registered voters
All	

Narrative Plan <i>(please attach additional sheets if needed)</i>
1.) Why is this consolidation of these precincts desirable? <input checked="" type="checkbox"/> This is the same plan used in the last election Well known location. A very well used location that serves residents from all areas of the County.
2.) In what manner will Precinct Officers be assigned? <input checked="" type="checkbox"/> This location will be fully staffed with election officials 4 Precinct Election Officers with the mandated party parity. 2 Democratic and 2 Republican Precinct Officers will serve.
3.) How will the voting location be publicized to voters? How will the location be noted as a "Vote Center?" Local newspaper, website/social media/postcards
4.) How will the voting location serve as a focal point to meet the needs of a diverse community? Same location as used in the past 4 elections. People are very familiar with this location..



Commonwealth of Kentucky

Petition to Consolidate Precincts and Precinct Election Officers

County Name	
Spencer	
Election	Dates of Voting
2026 Primary/election day	
Person Completing this Form	
Name	Lynn Hesselbrock
Title	SCBOE Chair/County Clerk
About Voting Location	
<i>Example: Tulip Poplar High, 123 Main Street, County High School</i>	
Name	Spencer County High School
Address	520 Taylorsville Road
Type	High School
Number of Parking Spaces	Sufficient Parking Spaces?
50	yes
Voting Equipment to be Used	
Number	Type of equipment
1	Verity Duo
2	Verity Scan/print
3	E Pollbooks

Precincts in Voting Location	
Precinct name	Number of registered voters
All	

Narrative Plan *(please attach additional sheets if needed)*

1.) Why is this consolidation of these precincts desirable?

☒ This is the same plan used in the last election

Well known location. A very well used location that serves residents from all areas of the County. We can add more voter booths if needed due to turnout.

2.) In what manner will Precinct Officers be assigned?

☒ This location will be fully staffed with election officials

12 Precinct Election Officers with the mandated party parity. 6 Democratic and 6 Republican Precinct Officers will serve.

3.) How will the voting location be publicized to voters? How will the location be noted as a "Vote Center?"

Local newspaper, website/social media/postcards

4.) How will the voting location serve as a focal point to meet the needs of a diverse community?

Same location as used in the past 4 elections. People are very familiar with this location..



Commonwealth of Kentucky

Petition to Consolidate Precincts and Precinct Election Officers

County Name	
Spencer	
Election	Dates of Voting
2026 Primary/election day	
Person Completing this Form	
Name	Lynn Hesselbrock
Title	SCBOE Chair/County Clerk
About Voting Location	
<i>Example: Tulip Poplar High, 123 Main Street, County High School</i>	
Name	Spencer Christian Church
Address	5720 Taylorsville Road
Type	Large Community Church
Number of Parking Spaces	Sufficient Parking Spaces?
60	yes
Voting Equipment to be Used	
Number	Type of equipment
1	Verity Duo
2	Verity Scan/print
3	E Pollbooks

Precincts in Voting Location	
Precinct name	Number of registered voters
All	

Narrative Plan *(please attach additional sheets if needed)*

1.) Why is this consolidation of these precincts desirable?

☒ This is the same plan used in the last election

Well known location. A very well used location that serves residents from all areas of the County. We can add more voter booths if needed due to turnout.

2.) In what manner will Precinct Officers be assigned?

☒ This location will be fully staffed with election officials

12 Precinct Election Officers with the mandated party parity. 6 Democratic and 6 Republican Precinct Officers will serve. Will have 1 person who is in charge and will communicate directly with the County Clerk's office and SCBOE on election day.

3.) How will the voting location be publicized to voters? How will the location be noted as a "Vote Center?"

Local newspaper, website/social media/postcards

4.) How will the voting location serve as a focal point to meet the needs of a diverse community?

Same location as used in the past 4 elections. People are very familiar with this location..



Commonwealth of Kentucky

Petition to Consolidate Precincts and Precinct Election Officers

County Name	
Spencer	
Election	Dates of Voting
2026 Primary/election day	
Person Completing this Form	
Name	Lynn Hesselbrock
Title	SCBOE Chair/County Clerk
About Voting Location	
<i>Example: Tulip Poplar High, 123 Main Street, County High School</i>	
Name	Mt. Eden Fire Station
Address	260Van Buren Road
Type	Fire Station
Number of Parking Spaces	Sufficient Parking Spaces?
60	yes
Voting Equipment to be Used	
Number	Type of equipment
1	Verity Duo
1	Verity Scan/print
1	E Pollbooks

Precincts in Voting Location	
Precinct name	Number of registered voters
All	

Narrative Plan *(please attach additional sheets if needed)*

1.) Why is this consolidation of these precincts desirable?

☒ This is the same plan used in the last election

Well known location. A very well used location that serves residents from all areas of Mt. Eden.

2.) In what manner will Precinct Officers be assigned?

☒ This location will be fully staffed with election officials

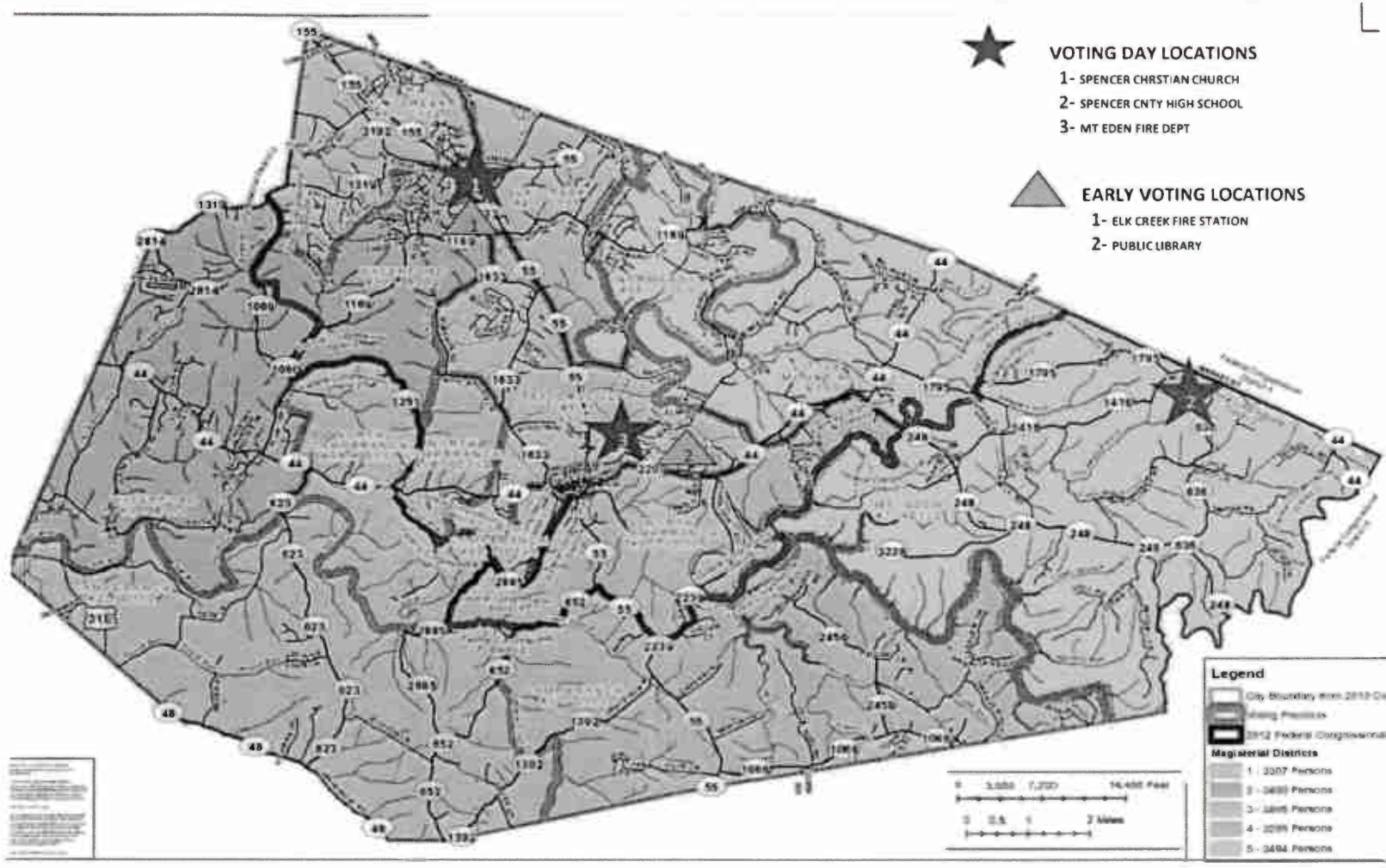
4 Precinct Election Officers with the mandated party parity. 2 Democratic and 2 Republican Precinct Officers will serve.

3.) How will the voting location be publicized to voters? How will the location be noted as a "Vote Center?"

Local newspaper, website/social media/postcards

4.) How will the voting location serve as a focal point to meet the needs of a diverse community?

Same location as used in the past 4 elections. People are very familiar with this location..



VOTING DAY LOCATIONS

- 1- SPENCER CHRISTIAN CHURCH
- 2- SPENCER CNTY HIGH SCHOOL
- 3- MT EDEN FIRE DEPT

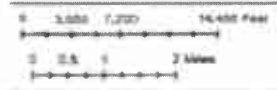


EARLY VOTING LOCATIONS

- 1- ELK CREEK FIRE STATION
- 2- PUBLIC LIBRARY

Legend

- City Boundary from 2010 Census
- Precinct
- 2010 Federal Congressional District
- Magisterial Districts
 - 1 - 3,007 Persons
 - 2 - 3,488 Persons
 - 3 - 3,485 Persons
 - 4 - 3,288 Persons
 - 5 - 3,484 Persons





P.O. Box 544
2 W. Main Street
Taylorsville, Kentucky 40071

Lynn Hesselbrock
Spencer County Clerk

Phone (502) 477-3215
Fax (502) 477-3216

December 5, 2025

I am submitting the 2026 Spencer County Election Plan for the Primary and General elections on behalf of the Spencer County Board of Elections.

Spencer County will have both a primary and general election in 2026. It is our plan to utilize the same election plan as we used for our successful 2024 presidential election. We saw an 11.7 % turnout for the 2024 primary election, and we will utilize the same facilities and machines as we used for the 2024 primary election as outlined in the attached SBE 74 forms submitted in conjunction with this narrative, except for the addition of the Verity Print machines to enable "print on demand" voting. The 6-day, excused voting will take place as in 2024, in the Spencer County Clerk's office with 2 Precinct Election Officers serving each day for 8 hours. There will be one democratic and one republican precinct election officer serving each day. There will be one Verity Duo machine for handicap accessible voters, one Verity Scan machine and one Verity Print machine. For the 3-day early voting, we will utilize 2 voting locations, each staffed with 4 precinct officers, 2 democratic and 2 republican. One location will be open from 8:00 am until 4:00 pm each day and the other location will be open from 11:00 am until 7:00 pm each day, offering 11 hours of voting availability each of the 3 days. Both locations will have 4 precinct officers. I will be in the office and available all hours of each day of early voting to assist both locations should any problems arise. We now use "print on demand" machines, so running out of ballots is not a problem but occasionally, running out of ballot paper can be. These 2 locations will both be "vote centers" where any voter, no matter their residence location, will be able to cast their ballot. We will again partner with the public library and the Taylorsville-Spencer County Fire Department so that voters going to work can cast their vote at the public library in the morning, and the voters who work in nearby Louisville, can cast their ballot on the way home from work in the evening as the Fire Department is located on the main inbound corridor and many voters travel past this location on their way home.

In the 2024 general election, Spencer County had the third highest voter turnout in the state at 52.6%, and due to the high early voting turnout, we were able to pivot quickly and add more equipment to the 2 early voting locations to enable rapid voter turnaround times, something our voters appreciated. As it turned out, Spencer County had a higher voter turnout in the 3-day early voting period than it did on the actual election day, something that had never happened in the past. We were glad we had planned for this to allow the flexibility and capability to accommodate our voters.

On election day itself, we will again utilize the 3 "vote centers" we used in the 2024 primary and general elections as their placement seems to capture our voting population so that the drive to any voting location is not unduly burdensome. We will use the Spencer County High School, Spencer Christian Church and the Mt. Eden Fire department training room. All 3 locations have welcomed voters to their facilities, and the Church even provides donuts for the precinct officers (don't tell the others, lol) We feel that this plan will meet the needs of our voters and election officers alike as it has in the past.

Respectfully submitted,

Lynn Hesselbrock
Chair, SCBOE/Spencer County Clerk