



**JASON DENNY**  
**ANDERSON COUNTY CLERK**  
100 SOUTH MAIN STREET  
LAWRENCEBURG, KY 40342  
PHONE: 502-839-3041 FAX: 502-839-3043

January 24, 2023

Secretary of State  
State Board of Elections

I am including this letter with the Vote Center Plan for Anderson County. We are asking to utilize the same 3 Vote Centers for Election Day as we used in 2022. These Centers are easy to access for all voters in our county. Approximately 75% of voters live within 5-10 minutes of a vote center. Approximately 15% live within 10-15 minutes. The remaining 10% live within 20 minutes, which has been the case even before vote centers due to the lack of buildings in those areas suitable enough for even a precinct. We have and continue to receive positive feedback from our voters on these centers. Voters appreciate that they can go to any of the 3 centers and cast their ballot with ease. They comment on the improved voting experience and security measures that have been put in place over the past several years. Easy to vote but hard to cheat. Utilizing Vote Centers has allowed us to obtain the best Election Officers in a better controlled environment. Vote Centers have allowed the Board of Elections and Clerk's Office Staff the ability to better monitor any situation that may arise during early and Election Day Voting. We intend to use the Community Center and City Maintenance Garage-Drive-thru for early voting as well as on Election Day. In addition, we will open our Middle School on Election Day. The Board, office personnel, and I all agree that this plan has worked in the past and will be more than sufficient for the 2023 Election cycle.

As always, feel free to contact me with any questions or comments at 502-839-3041 or my cell at 502-680-0878.

Sincerely,

A handwritten signature in blue ink that reads "Jason Denny". The signature is fluid and cursive, with a long, sweeping underline that extends to the right.

Jason Denny  
Anderson County Clerk  
Chairman, Anderson County Board of Elections



# Commonwealth of Kentucky

## Petition to Consolidate Precincts and Precinct Election Officers

<b>County Name</b>	
Anderson	
<b>Election</b>	<b>Dates of Voting</b>
<b>Person Completing this Form</b>	
Name	Jason Denny
Title	County Clerk
Phone	502-839-3041
<b>About Voting Location</b>	
<i>Example: Tulip Poplar High, 123 Main Street, County High School</i>	
Name	Anderson Middle School
Address	1 Mustang Trail
Type	School
<b>Voting Equipment to be Used</b>	
Number	Type of equipment
8	Verity Scan Units
1	Verity DUO (ADA) Marking Devices

Precincts in Voting Location	
Precinct name	Number of registered voters
All Precincts	

<b>Narrative Plan</b> <i>(please attach additional sheets if needed)</i>
<b>1.) Why is this consolidation of these precincts desirable?</b> <input checked="" type="checkbox"/> This is the same plan used in the last election
This facility will be utilized an Election Day only. Voters can access the facility from 3 major highways from all directions. We can process 250-300 per hour. This facility has more than adequate parking and space for the voters.
<b>2.) In what manner will Precinct Officers be assigned?</b> <input checked="" type="checkbox"/> This location will be fully staffed with election officials
We have and will continue to train an adequate number of election officers to check in voters, distribute ballots, assist voters, and direct traffic, should any issues or questions arise during early voting and Election Day.
<b>3.) How will the voting location be publicized to voters? How will the location be noted as a "Vote Center?"</b>
We utilize the newspaper, social media and mailers to inform the voters of dates, times and locations.
<b>4.) How will the voting location serve as a focal point to meet the needs of a diverse community?</b>
Utilizing vote centers in Anderson County has significantly reduced the confusion for both early and Election Day voting. All voters can cast their ballot at any of the approved sites, therefore eliminating the need to send voters elsewhere. Having one check in station at each vote center has proven to be very beneficial in 2020 and 2022. This facility has more than adequate parking as well as ingress and egress.



# Commonwealth of Kentucky

## Petition to Consolidate Precincts and Precinct Election Officers

<b>County Name</b>	
Anderson	
<b>Election</b>	<b>Dates of Voting</b>
<b>Person Completing this Form</b>	
Name	Jason Denny
Title	County Clerk
Phone	502-839-3041
<b>About Voting Location</b>	
<i>Example: Tulip Poplar High, 123 Main Street, County High School</i>	
Name	Anthony D. Stratton Building
Address	1026 County Park Road
Type	Community Building-Basement
<b>Voting Equipment to be Used</b>	
Number	Type of equipment
3	Verity Scan Units
1	Verity DUO (ADA) Marking Devices

Precincts in Voting Location	
Precinct name	Number of registered voters
All Precincts	

### Narrative Plan *(please attach additional sheets if needed)*

#### 1.) Why is this consolidation of these precincts desirable?

☒ This is the same plan used in the last election

This facility has proven to be very popular due to location, ease of access from 3 major highways and more than adequate space and parking, both in 2020 and 2022. We can process between 150 and 175 voters per hour. We plan to utilize this facility both for early voting and Election Day.

#### 2.) In what manner will Precinct Officers be assigned?

☒ This location will be fully staffed with election officials

We have and will continue to train an adequate number of election officers to check in voters, distribute ballots and assist voters, should any issues or questions arise during early voting and Election Day.

#### 3.) How will the voting location be publicized to voters? How will the location be noted as a "Vote Center?"

We utilize the newspaper, social media and mailers to inform the voters of dates, times and locations.

#### 4.) How will the voting location serve as a focal point to meet the needs of a diverse community?

Utilizing vote centers in Anderson County has significantly reduced the confusion for both early and Election Day voting. All voters can cast their ballot at any of the approved sites, therefore eliminating the need to send voters elsewhere. Having one check in station at each vote center has proven to be very beneficial in 2020 and 2022. This facility has more than adequate parking as well as ingress and egress.



# Commonwealth of Kentucky

## Petition to Consolidate Precincts and Precinct Election Officers

<b>County Name</b>	
Anderson	
<b>Election</b>	<b>Dates of Voting</b>
<b>Person Completing this Form</b>	
Name	Jason Denny
Title	County Clerk
Phone	502-839-3041
<b>About Voting Location</b>	
<i>Example: Tulip Poplar High, 123 Main Street, County High School</i>	
Name	City Maintenance Building
Address	1500 Maintenance Drive
Type	Drive-Thru Facility
<b>Voting Equipment to be Used</b>	
Number	Type of equipment
8	Verity Scan Units
1	Verity DUO (ADA) Marking Devices

Precincts in Voting Location	
Precinct name	Number of registered voters
All Precincts	

<b>Narrative Plan</b> <i>(please attach additional sheets if needed)</i>
<b>1.) Why is this consolidation of these precincts desirable?</b> <input checked="" type="checkbox"/> This is the same plan used in the last election  This facility is the most popular location in our county due ease of access and convenience. Approximately 49% for early and Election Day votes utilized this facility. We can process over 200 voters per hour in the drive-thru. We plan to utilize this facility both for early voting and Election Day.
<b>2.) In what manner will Precinct Officers be assigned?</b> <input checked="" type="checkbox"/> This location will be fully staffed with election officials  We have and will continue to train an adequate number of election officers to check in voters, distribute ballots, assist voters, and direct traffic, should any issues or questions arise during early voting and Election Day.
<b>3.) How will the voting location be publicized to voters? How will the location be noted as a "Vote Center?"</b>  We utilize the newspaper, social media and mailers to inform the voters of dates, times and locations.
<b>4.) How will the voting location serve as a focal point to meet the needs of a diverse community?</b>  Utilizing vote centers in Anderson County has significantly reduced the confusion for both early and Election Day voting. All voters can cast their ballot at any of the approved sites, therefore eliminating the need to send voters elsewhere. Having one check in station at each vote center has proven to be very beneficial in 2020 and 2022. This facility has more than adequate entry and exit points.

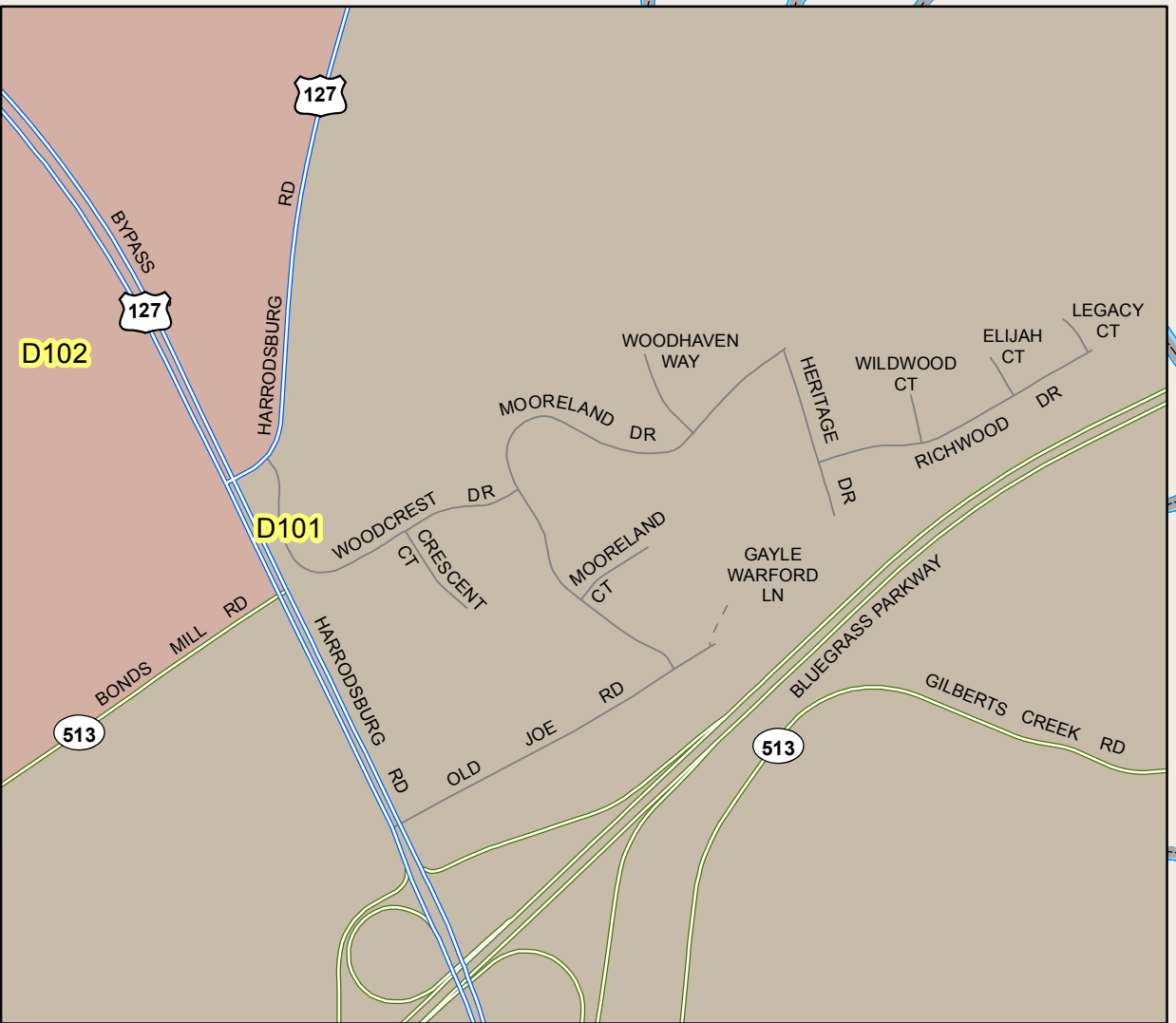
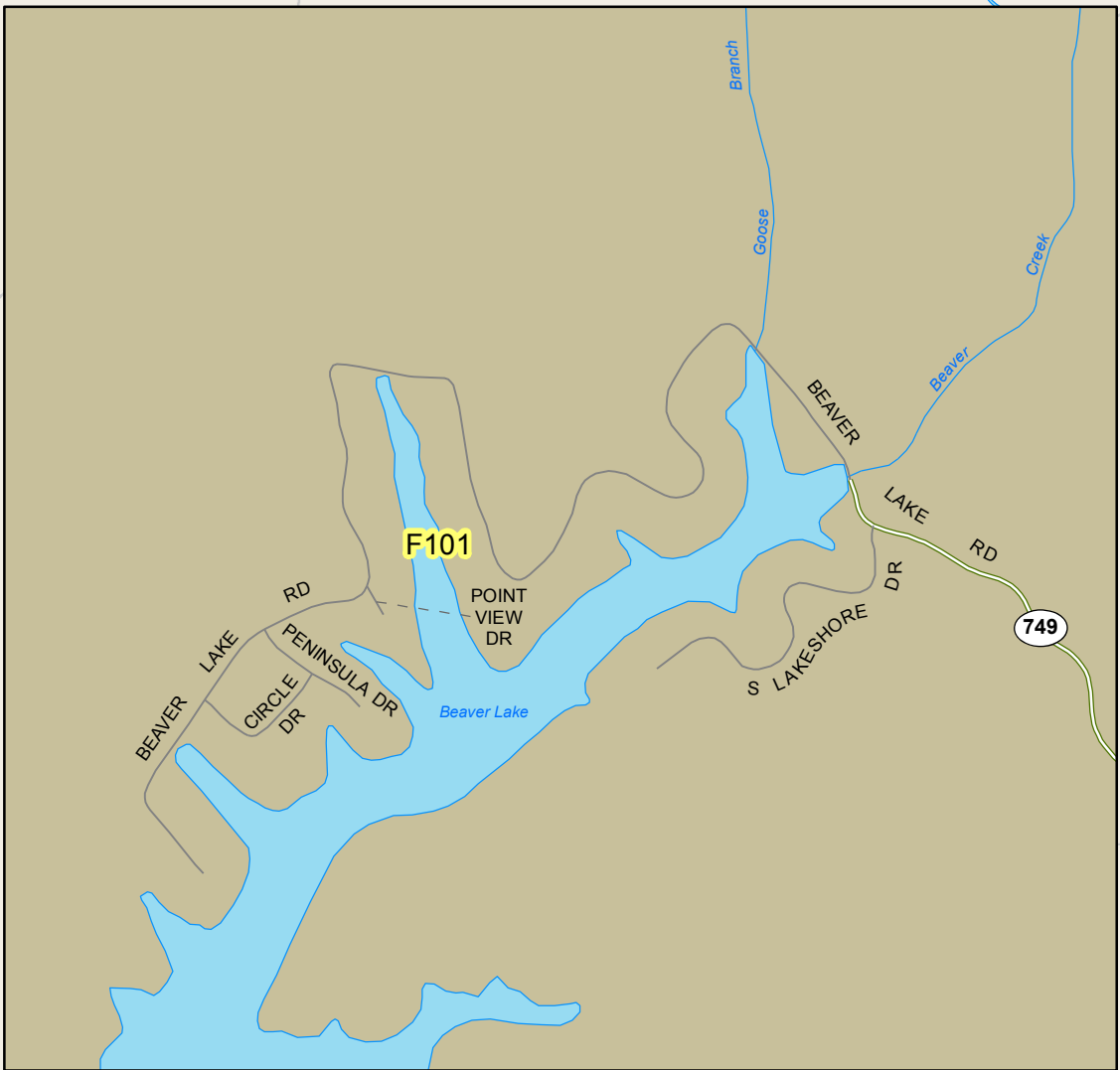
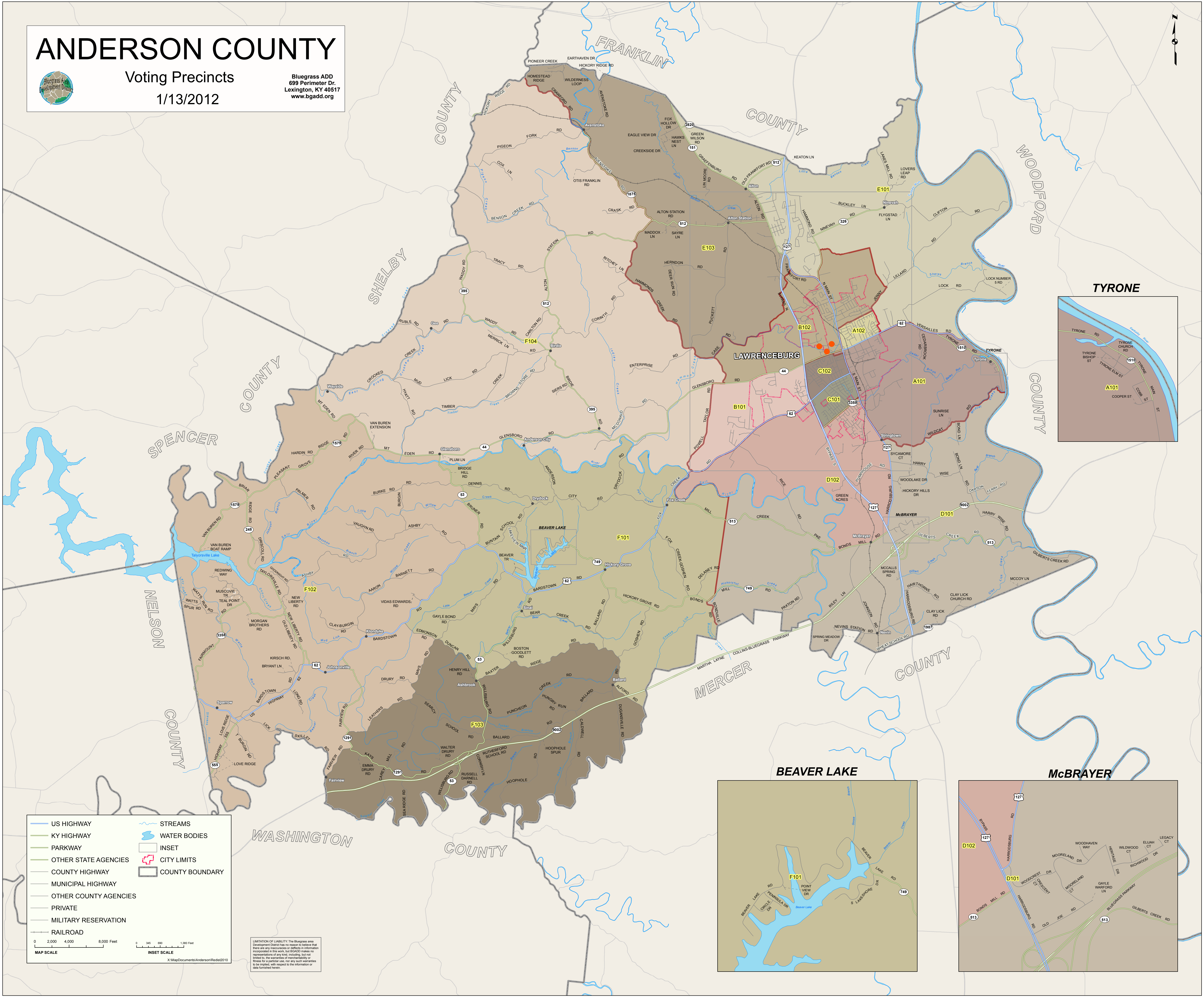


# ANDERSON COUNTY



Voting Precincts  
1/13/2012

Bluegrass ADD  
699 Perimeter Dr.  
Lexington, KY 40517  
www.bgadd.org



US HIGHWAY

KY HIGHWAY

PARKWAY

OTHER STATE AGENCIES

COUNTY HIGHWAY

MUNICIPAL HIGHWAY

OTHER COUNTY AGENCIES

PRIVATE

MILITARY RESERVATION

RAILROAD

STREAMS

WATER BODIES

INSET

CITY LIMITS

COUNTY BOUNDARY

0 2,000 4,000 8,000 Feet

0 345 690 1,380 Feet

MAP SCALE

INSET SCALE

X:\MapDocuments\Anderson\Redist2010

LIMITATION OF LIABILITY: The Bluegrass area Development District has no reason to believe that there are any inaccuracies or omissions in the information incorporated in this work, but BGADD makes no representation of any kind, including, but not limited to, the warranties of merchantability or fitness for a particular use, for any such warranties to be implied, with respect to the information or data furnished herein.