



ANDERSON COUNTY COURTHOUSE

JASON DENNY

ANDERSON COUNTY CLERK
100 SOUTH MAIN
LAWRENCEBURG, KENTUCKY 40342
TELEPHONE 502-839-3041 FAX 502-839-3043

February 18, 2022

State Board of Elections
140 Walnut Street
Frankfort, KY 40601

Prior to the 2020 Election and the COVID Pandemic, over 93% of our registered voters were casting their ballots in locations within or near the city boundaries all in the same day. In addition, approximately 2% were voting absentee. This was due to multiple areas in our county lacking facilities meeting ADA Regulations, adequate parking and/or secure wi-fi connections ensuring the e-poll books operate correctly. After the 2020 Election, we all realized that changes were needed with the process. HB 574 was passed allowing for 3 additional days for no-excuse voting as well as vote centers. This provision allows voters more opportunities to vote in person in addition to election day. Our local board of elections voted to utilize the vote center model in the future and are asking for state approval. We fill confident that the 3 early voting centers as well as the 3 centers on election day that we have proposed will be more than adequate to accommodate the voters in a timely manner. Utilizing these voting centers will assist us with the shortage of election officers that we are currently experiencing, the ability to combine equipment and solve any issues with e-poll book connectivity. As a local board, we feel that we know the pulse of our community and their needs and look forward to this new approach to a safe and secure election.

As always, feel free to contact me with any questions or comments.

Sincerely,

Jason Denny
Anderson County Clerk
502-680-0878



Commonwealth of Kentucky

Petition to Consolidate Precincts and Precinct Election Officers

County Name	
Anderson	
Election	
May 17, 2022	
Person Completing this Form	
Name	Jason Denny
Title	County Clerk
Phone	502-839-3041
About Voting Location	
<i>Example: Tulip Poplar High, 123 Main Street, County High School</i>	
Name	Anthony D. Stratton
Address	1026 County Park Road
Type	Community Building
Voting Equipment to be Used	
Number	Type of equipment
3	Verity Scan
1	Duo (ADA)

Precincts in Voting Location	
Precinct name	Number of registered voters
East Lawrenceburg	1205
Duncan	1530
West Lawrenceburg	1253
West Duncan	2013
Lillard	1314
Witherspoon	1729
McBrayer	1235
South Lillard	1771
Alton	2241
West Alton	1161
Hickory Grove	1053
Western	781
Rutherford	510
Birdie	1114

Narrative Plan <i>(please attach additional sheets if needed)</i>
1.) Why is this consolidation of these precincts desirable? <input type="checkbox"/> This is the same plan used in the last election Prior to 2020, 93% of our registered voters were already casting their ballots utilizing locations within or near the city boundaries. The vote center model proved to be very popular in 2020 Our board plans to utilize this building as one of 2 early voting centers and one of 3 voting centers on Election Day
2.) In what manner will Precinct Officers be assigned? <input type="checkbox"/> This location will be fully staffed with election officials We will be fully staffed as in 2020. We will have multiple clerk's and judges trained and in place to accommodate all voters during early voting and Election Day. There will also be a sheriff at each location.
3.) How will the voting location be publicized to voters? How will the location be noted as a "Vote Center?" Our board will be utilizing the newspaper, social media and mailers to inform the voters.
4.) How will the voting location serve as a focal point to meet the needs of a diverse community? Utilizing vote centers will reduce the amount confusion for both early and Election Day voting. All voters can cast their ballot at any of the approved sites, therefore eliminating the need to send voters elsewhere to cast their ballot. Having one check in station at each vote center proved to be very beneficial in 2020. This facility has more than adequate parking.



Commonwealth of Kentucky

Petition to Consolidate Precincts and Precinct Election Officers

County Name	
Anderson	
Election	
May 17, 2022	
Person Completing this Form	
Name	Jason Denny
Title	County Clerk
Phone	502-839-3041
About Voting Location	
<i>Example: Tulip Poplar High, 123 Main Street, County High School</i>	
Name	Anderson Middle School
Address	1 Mustang Trail
Type	School
Voting Equipment to be Used	
Number	Type of equipment
4	Verity Scan
1	Duo (ADA)

Precincts in Voting Location	
Precinct name	Number of registered voters
East Lawrenceburg	1205
Duncan	1530
West Lawrenceburg	1253
West Duncan	2013
Lillard	1314
Witherspoon	1729
McBrayer	1235
South Lillard	1771
Alton	2241
West Alton	1161
Hickory Grove	1053
Western	781
Rutherford	510
Birdie	1114

Narrative Plan <i>(please attach additional sheets if needed)</i>
1.) Why is this consolidation of these precincts desirable? <input type="checkbox"/> This is the same plan used in the last election Prior to 2020, 93% of our registered voters were already casting their ballots utilizing locations within or near the city boundaries. The vote center model proved to be very popular in 2020. Our board plans to utilize this building as one of 3 voting centers on Election Day.
2.) In what manner will Precinct Officers be assigned? <input type="checkbox"/> This location will be fully staffed with election officials We will be fully staffed as in 2020. We will have multiple clerk's and judges trained and in place to accommodate all voters on Election Day. There will also be a sheriff at this location.
3.) How will the voting location be publicized to voters? How will the location be noted as a "Vote Center?" Our board will be utilizing the newspaper, social media and mailers to inform the voters.
4.) How will the voting location serve as a focal point to meet the needs of a diverse community? Utilizing vote centers will reduce the amount confusion for both early and Election Day voting. All voters can cast their ballot at any of the approved sites, therefore eliminating the need to send voters elsewhere to cast their ballot. Having one check in station at each vote center proved to be very beneficial in 2020. This facility has more than adequate parking and has be utilized for multiple precincts in the past.



Commonwealth of Kentucky

Petition to Consolidate Precincts and Precinct Election Officers

County Name	
Anderson	
Election	
May 17, 2022	
Person Completing this Form	
Name	Jason Denny
Title	County Clerk
Phone	502-839-3041
About Voting Location	
<i>Example: Tullip Poplar High, 123 Main Street, County High School</i>	
Name	City Maintenance Building
Address	1500 Maintenance Drive
Type	Drive-thru
Voting Equipment to be Used	
Number	Type of equipment
8	Verity Scan
1	Duo (ADA)

Precincts in Voting Location	
Precinct name	Number of registered voters
East Lawrenceburg	1205
Duncan	1530
West Lawrenceburg	1253
West Duncan	2013
Lillard	1314
Witherspoon	1729
McBrayer	1235
South Lillard	1771
Alton	2241
West Alton	1161
Hickory Grove	1053
Western	781
Rutherford	510
Birdie	1114

Narrative Plan <i>(please attach additional sheets if needed)</i>
<p>1.) Why is this consolidation of these precincts desirable?</p> <p><input type="checkbox"/> This is the same plan used in the last election</p> <p>Prior to 2020, 93% of our registered voters were already casting their ballots utilizing locations within or near the city boundaries. The drive-thru model proved to be very popular in 2020. Our board plans to utilize this building as one of 2 early voting centers and 3 voting centers on Election Day.</p>
<p>2.) In what manner will Precinct Officers be assigned?</p> <p><input type="checkbox"/> This location will be fully staffed with election officials</p> <p>We will be fully staffed as in 2020. We will have multiple clerk's and judges trained and in place to accommodate all voters on Election Day. There will also be a sheriff at this location.</p>
<p>3.) How will the voting location be publicized to voters? How will the location be noted as a "Vote Center?"</p> <p>Our board will be utilizing the newspaper, social media and mailers to inform the voters.</p>
<p>4.) How will the voting location serve as a focal point to meet the needs of a diverse community?</p> <p>Utilizing vote centers will reduce the amount confusion for both early and Election Day voting. All voters can cast their ballot at any of the approved sites, therefore eliminating the need to send voters elsewhere to cast their ballot. Having one check in station at each vote center proved to be very beneficial in 2020. This facility has more than adequate room to line up 4 lanes wide and has be utilized for multiple precincts in the past.</p>



Commonwealth of Kentucky

Petition to Consolidate Precincts and Precinct Election Officers

County Name	
Anderson	
Election	
May 17, 2022	
Person Completing this Form	
Name	Jason Denny
Title	County Clerk
Phone	502-839-3041
About Voting Location	
<i>Example: Tulip Poplar High, 123 Main Street, County High School</i>	
Name	Walmart
Address	1000 Bypass North
Type	Mobile Voting Trailer
Voting Equipment to be Used	
Number	Type of equipment
1	Verity Scan
1	DUO (ADA)

Precincts in Voting Location	
Precinct name	Number of registered voters
East Lawrenceburg Duncan	1205 1530
West Lawrenceburg West Duncan	1253 2013
Lillard Witherspoon	1314 1729
McBrayer South Lillard	1235 1771
Alton West Alton	2241 1161
Hickory Grove Western	1053 781
Rutherford Birdie	510 1114

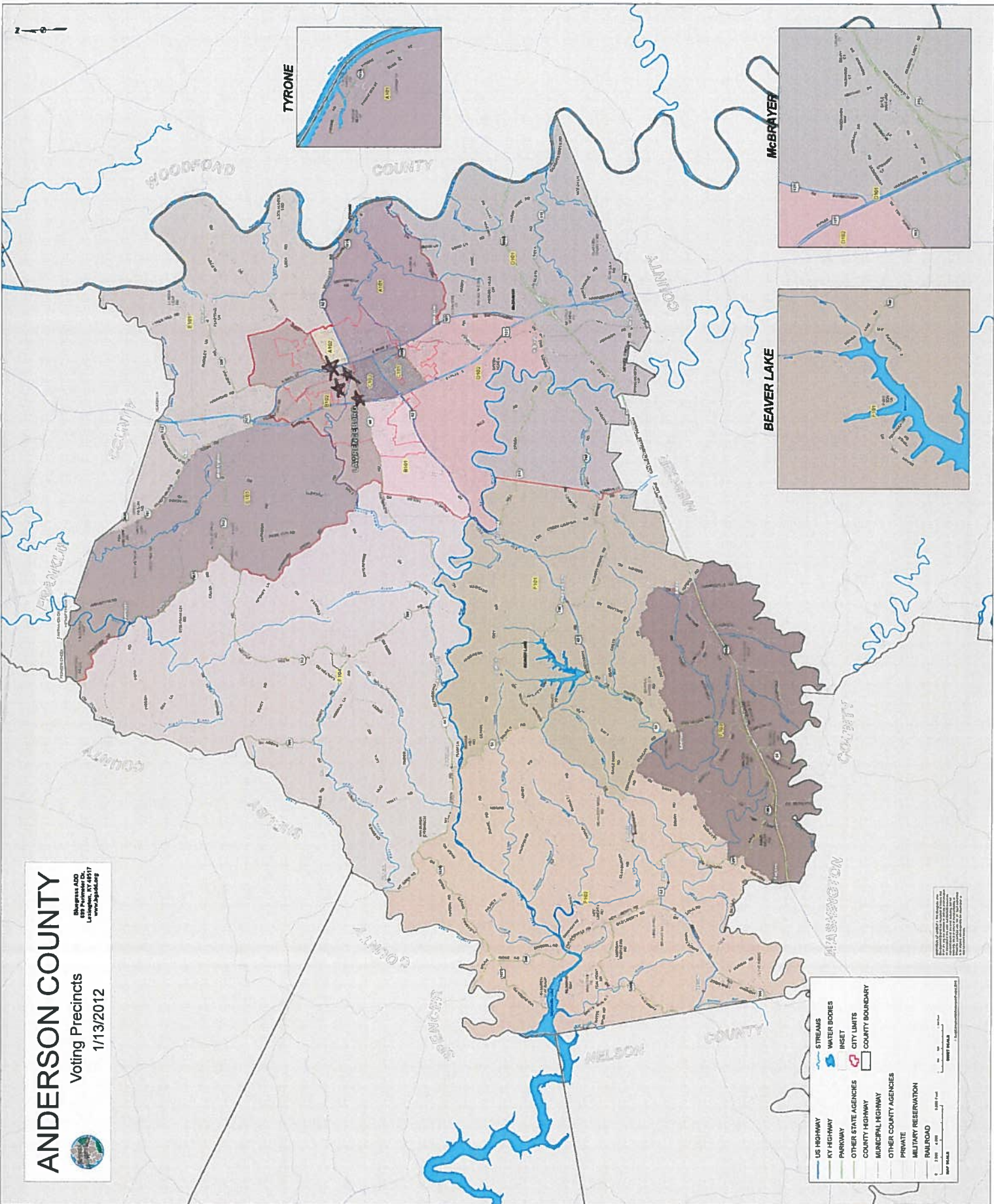
Narrative Plan <i>(please attach additional sheets if needed)</i>
1.) Why is this consolidation of these precincts desirable? <input type="checkbox"/> This is the same plan used in the last election Prior to 2020, 93% of our registered voters were already casting their ballots utilizing locations within or near the city boundaries, The vote center model proved to be very popular in 2020. Our board plans to utilize this location on Saturday as an early vote center in addition to the 2 others requested.
2.) In what manner will Precinct Officers be assigned? <input type="checkbox"/> This location will be fully staffed with election officials We will be assigning at least 4 election officials to this mobile voting unit.
3.) How will the voting location be publicized to voters? How will the location be noted as a "Vote Center?" Our board will be utilizing the newspaper, social media and mailers to inform the voters.
4.) How will the voting location serve as a focal point to meet the needs of a diverse community? Utilizing vote centers will reduce the amount of confusion for both early and Election Day voting. All voters can cast their ballot at any of the approved sites, therefore eliminating the need to send voters elsewhere to cast their ballot. Having one check in station at each vote center proved to be very beneficial in 2020. This facility has more that adequate parking. Walmart is a focal point in our community this location will enhance the voting experience.

ANDERSON COUNTY

Voting Precincts
1/13/2012



Anderson, KY 40302
Anderson, KY 40301
www.andersonky.org



LEGEND

- US HIGHWAY
- KY HIGHWAY
- PARALLEL
- OTHER STATE AGENCIES
- COUNTY HIGHWAY
- MUNICIPAL HIGHWAY
- OTHER COUNTY AGENCIES
- PRIVATE
- MILITARY RESERVATION
- RAILROAD
- MAP SCALE

STREAMS

WATER BODIES

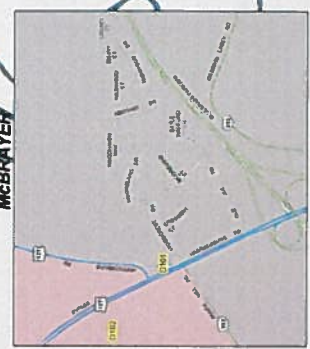
INSET

CITY LIMITS

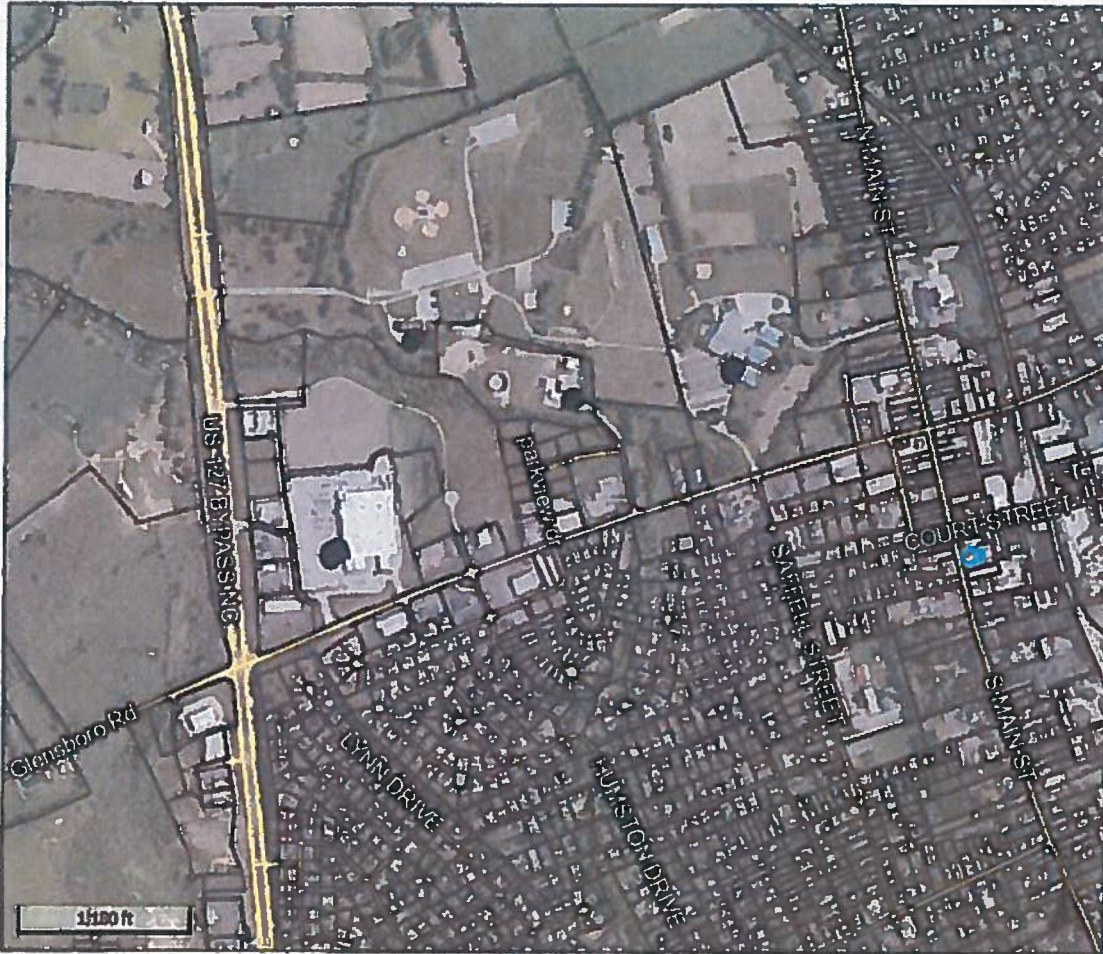
COUNTY BOUNDARY

MAP SCALE

0 1000 2000 4000 8000 Feet
0 1000 2000 4000 8000 Meters



ANDERSON COUNTY, KY
 1. Precinct boundaries are shown as of 1/13/2012.
 2. Precinct boundaries are subject to change without notice.
 3. Precinct boundaries are shown as of 1/13/2012.
 4. Precinct boundaries are subject to change without notice.



Overview



Legend

- Parcels
- Roads

Parcel ID	L3-24-10	Physical Address	S MAIN ST 205	Land Value	\$35,000	Last 2 Sales			
Property Class	Commercial	Mailing Address	CALDWELL DOUGLAS R & DONNA	Improvement Value	\$30,000	Date	1/7/2013	Price	\$50,000
Taxing District	Lawrenceburg	Address	524 N MAIN ST	Total Value	\$65,000		4/1/1981	Reason	Arms-Length Transaction
Acres	n/a		LAWRENCEBURG, KY 40342					Qual	U

Date created: 2/9/2022
 Last Data Uploaded: 2/8/2022 8:29:34 PM

Developed by **Schneider**
 GEOSPATIAL