



Commonwealth of Kentucky

Petition to Consolidate Precincts and Precinct Election Officers

County Name	
FRANKLIN	
Election	
2022 PRIMARY	
Person Completing this Form	
Name	MAYGAN R. FRYMAN
Title	ELECTION DEPUTY CLERK
Phone	502-875-8704
About Voting Location	
<i>Example: Tulip Poplar High, 123 Main Street, County High School</i>	
Name	FRANKLIN COUNTY ELECTION HQ (former FPB building)
Address	317 WEST 2nd STREET
Type	CITY OFFICE BUILDING
Voting Equipment to be Used	
Number	Type of equipment
6	VERITY SCAN
2	VERITY TOUCHWRITER
4	E-POLLBOOKS

Precincts in Voting Location	
Precinct name	Number of registered voters
COUNTYWIDE VOTE CENTER	

Narrative Plan <i>(please attach additional sheets if needed)</i>	
1.) Why is this consolidation of these precincts desirable? <input checked="" type="checkbox"/> This is the same plan used in the last election This central location will serve as the official Franklin County election office due to lack of space and parking in the main Clerk's office. A separate entry and exit is available and will allow for a more seamless process and will help reduce the risk of contracting or spreading the Covid-19 virus. Absentee voting and mailings will be handled in this location and will also serve as a Countywide vote center on Election day.	
2.) In what manner will Precinct Officers be assigned? <input checked="" type="checkbox"/> This location will be fully staffed with election officials A total of 6 precinct workers will be assigned to this location in order to progress voters through the voting process in a efficient and safe manner. Election staff from the Clerk's office will also be on site.	
3.) How will the voting location be publicized to voters? How will the location be noted as a "Vote Center?" Local newspaper, social media and radio. Road & building signs will be posted at the location.	
4.) How will the voting location serve as a focal point to meet the needs of a diverse community? The school building will provide ample voting space, parking and ease for social distancing and accessibility for voters in this district. Franklin County and its' voters will benefit from the overall logistics and safety, as well as being more cost effective.	



Commonwealth of Kentucky

Petition to Consolidate Precincts and Precinct Election Officers

County Name	
FRANKLIN	
Election	
2022 PRIMARY	
Person Completing this Form	
Name	MAYGAN R. FRYMAN
Title	ELECTION DEPUTY CLERK
Phone	502-875-8704
About Voting Location	
<i>Example: Tulip Poplar High, 123 Main Street, County High School</i>	
Name	COLLINS LANE ELEMENTARY
Address	1 COUGAR LANE
Type	COUNTY ELEMENTARY SCHOOL
Voting Equipment to be Used	
Number	Type of equipment
2	VERITY SCAN
1	VERITY TOUCHWRITER
4	E-POLLBOOKS

Precincts in Voting Location	
Precinct name	Number of registered voters
A101 FARMALE	1,176
A102 CLOVERDALE	668
A103A COLEMAN-VOGLER	610
A104A THISTLETON	816
A105A BRIDGE-GLENNIS	713
A106 GREEN WILSON	987
A107A CAPITAL	748
A108 EVERGREEN	1,069

Narrative Plan <i>(please attach additional sheets if needed)</i>
1.) Why is this consolidation of these precincts desirable? <input checked="" type="checkbox"/> This is the same plan used in the last election
Consolidation will help reduce the amount of interactions between precinct workers and voters, while also reducing the risk of contracting or spreading the Covid-19 virus.
2.) In what manner will Precinct Officers be assigned? <input checked="" type="checkbox"/> This location will be fully staffed with election officials
A total of 8 precinct workers will be assigned to this location in order to progress voters through the voting process in a efficient and safe manner.
3.) How will the voting location be publicized to voters? How will the location be noted as a "Vote Center?"
Local newspaper, social media and radio. Road & building signs will be posted at the location.
4.) How will the voting location serve as a focal point to meet the needs of a diverse community?
The school building will provide ample voting space, parking and ease for social distancing and accessibility for voters in this district. Franklin County and its' voters will benefit from the overall logistics and safety, as well as being more cost effective.



Commonwealth of Kentucky

Petition to Consolidate Precincts and Precinct Election Officers

County Name	
FRANKLIN	
Election	
2022 PRIMARY	
Person Completing this Form	
Name	MAYGAN R. FRYMAN
Title	ELECTION DEPUTY CLERK
Phone	502-875-8704
About Voting Location	
<i>Example: Tulip Poplar High, 123 Main Street, County High School</i>	
Name	HEARN ELEMENTARY
Address	300 COPPERLEAD BLVD
Type	COUNTY ELEMENTARY SCHOOL
Voting Equipment to be Used	
Number	Type of equipment
2	VERITY SCAN
1	VERITY TOUCHWRITER
4	E-POLLBOOKS

Precincts in Voting Location	
Precinct name	Number of registered voters
B101 JETT	1,328
B102 COUNTRY CLUB	1,275
B103A SUNSET	642
B105A FRANKLIN HEIGHTS	571
B106 STATION SPRINGS	2,220
B108A TIERRA LINDA	1,062
B109A BELLVIEW	435

Narrative Plan <i>(please attach additional sheets if needed)</i>	
1.) Why is this consolidation of these precincts desirable? <input checked="" type="checkbox"/> This is the same plan used in the last election	
Consolidation will help reduce the amount of interactions between precinct workers and voters, while also reducing the risk of contracting or spreading the Covid-19 virus.	
2.) In what manner will Precinct Officers be assigned? <input checked="" type="checkbox"/> This location will be fully staffed with election officials	
A total of 8 precinct workers will be assigned to this location in order to progress voters through the voting process in a efficient and safe manner.	
3.) How will the voting location be publicized to voters? How will the location be noted as a "Vote Center?"	
Local newspaper, social media and radio. Road & building signs will be posted at the location.	
4.) How will the voting location serve as a focal point to meet the needs of a diverse community?	
The school building will provide ample voting space, parking and ease for social distancing and accessibility for voters in this district. Franklin County and its' voters will benefit from the overall logistics and safety, as well as being more cost effective.	



Commonwealth of Kentucky

Petition to Consolidate Precincts and Precinct Election Officers

County Name	
FRANKLIN	
Election	
2022 PRIMARY	
Person Completing this Form	
Name	MAYGAN R. FRYMAN
Title	ELECTION DEPUTY CLERK
Phone	502-875-8704
About Voting Location	
<i>Example: Tulip Poplar High, 123 Main Street, County High School</i>	
Name	FRANKLIN COUNTY HIGH
Address	1100 EAST MAIN STREET
Type	COUNTY HIGH SCHOOL
Voting Equipment to be Used	
Number	Type of equipment
2	VERITY SCAN
1	VERITY TOUCHWRITER
4	E-POLLBOOKS

Precincts in Voting Location	
Precinct name	Number of registered voters
C101A GREEN HILL	556
C102A SCHENKEL LANE	934
C105A ARNOLD	471
C106A SCRUGGS	555
C107A SILVERLAKE	1,246
C108 FORKS OF ELKHORN	1,003
C109A RIDGEVIEW	1,179
C110A RUSSELL	849

Narrative Plan <i>(please attach additional sheets if needed)</i>
<p>1.) Why is this consolidation of these precincts desirable? <input checked="" type="checkbox"/> This is the same plan used in the last election</p> <p>Consolidation will help reduce the amount of interactions between precinct workers and voters, while also reducing the risk of contracting or spreading the Covid-19 virus.</p>
<p>2.) In what manner will Precinct Officers be assigned? <input checked="" type="checkbox"/> This location will be fully staffed with election officials</p> <p>A total of 8 precinct workers will be assigned to this location in order to progress voters through the voting process in a efficient and safe manner.</p>
<p>3.) How will the voting location be publicized to voters? How will the location be noted as a "Vote Center?"</p> <p>Local newspaper, social media and radio. Road & building signs will be posted at the location.</p>
<p>4.) How will the voting location serve as a focal point to meet the needs of a diverse community?</p> <p>The school building will provide ample voting space, parking and ease for social distancing and accessibility for voters in this district. Franklin County and its' voters will benefit from the overall logistics and safety, as well as being more cost effective.</p>



Commonwealth of Kentucky

Petition to Consolidate Precincts and Precinct Election Officers

County Name	
FRANKLIN	
Election	
2022 PRIMARY	
Person Completing this Form	
Name	MAYGAN R. FRYMAN
Title	ELECTION DEPUTY CLERK
Phone	502-875-8704
About Voting Location	
<i>Example: Tulip Poplar High, 123 Main Street, County High School</i>	
Name	PEAKS MILL ELEMENTARY
Address	100 PEAKS MILL ROAD
Type	COUNTY ELEMENTARY SCHOOL
Voting Equipment to be Used	
Number	Type of equipment
2	VERITY SCAN
1	VERITY TOUCHWRITER
4	E-POLLBOOKS

Precincts in Voting Location	
Precinct name	Number of registered voters
D101 SWALLOWFIELD	647
D102 OWENTON ROAD	1,163
D103 PEAKS MILL	524
D104 SWITZER	602
D105A GLENWOOD	582
D106A GAINES-HOLMES	638
D107A CRESTWOOD	465
D108A THORNHILL	587
D109A FAIRVIEW	1,344

Narrative Plan <i>(please attach additional sheets if needed)</i>	
1.) Why is this consolidation of these precincts desirable? <input checked="" type="checkbox"/> This is the same plan used in the last election Consolidation will help reduce the amount of interactions between precinct workers and voters, while also reducing the risk of contracting or spreading the Covid-19 virus.	
2.) In what manner will Precinct Officers be assigned? <input checked="" type="checkbox"/> This location will be fully staffed with election officials A total of 8 precinct workers will be assigned to this location in order to progress voters through the voting process in a efficient and safe manner.	
3.) How will the voting location be publicized to voters? How will the location be noted as a "Vote Center?" Local newspaper, social media and radio. Road & building signs will be posted at the location.	
4.) How will the voting location serve as a focal point to meet the needs of a diverse community? The school building will provide ample voting space, parking and ease for social distancing and accessibility for voters in this district. Franklin County and its' voters will benefit from the overall logistics and safety, as well as being more cost effective.	



Commonwealth of Kentucky

Petition to Consolidate Precincts and Precinct Election Officers

County Name	
FRANKLIN	
Election	
2022 PRIMARY	
Person Completing this Form	
Name	MAYGAN R. FRYMAN
Title	ELECTION DEPUTY CLERK
Phone	502-875-8704
About Voting Location	
<i>Example: Tulip Poplar High, 123 Main Street, County High School</i>	
Name	WESTERN HILLS HIGH
Address	100 DOCTORS DRIVE
Type	COUNTY HIGH SCHOOL
Voting Equipment to be Used	
Number	Type of equipment
2	VERITY SCAN
1	VERITY TOUCHWRITER
4	E-POLLBOOKS

Precincts in Voting Location	
Precinct name	Number of registered voters
E101 LOUISVILLE ROAD	1,449
E102 SOUTH BENSON	1,968
E108A COLLINS LANE	1,022
E109A WESTGATE	1,057
E110A NORTH WESTGATE	947

Narrative Plan <i>(please attach additional sheets if needed)</i>
<p>1.) Why is this consolidation of these precincts desirable? <input checked="" type="checkbox"/> This is the same plan used in the last election</p> <p>Consolidation will help reduce the amount of interactions between precinct workers and voters, while also reducing the risk of contracting or spreading the Covid-19 virus.</p>
<p>2.) In what manner will Precinct Officers be assigned? <input checked="" type="checkbox"/> This location will be fully staffed with election officials</p> <p>A total of 8 precinct workers will be assigned to this location in order to progress voters through the voting process in a efficient and safe manner.</p>
<p>3.) How will the voting location be publicized to voters? How will the location be noted as a "Vote Center?"</p> <p>Local newspaper, social media and radio. Road & building signs will be posted at the location.</p>
<p>4.) How will the voting location serve as a focal point to meet the needs of a diverse community?</p> <p>The school building will provide ample voting space, parking and ease for social distancing and accessibility for voters in this district. Franklin County and its' voters will benefit from the overall logistics and safety, as well as being more cost effective.</p>



Commonwealth of Kentucky

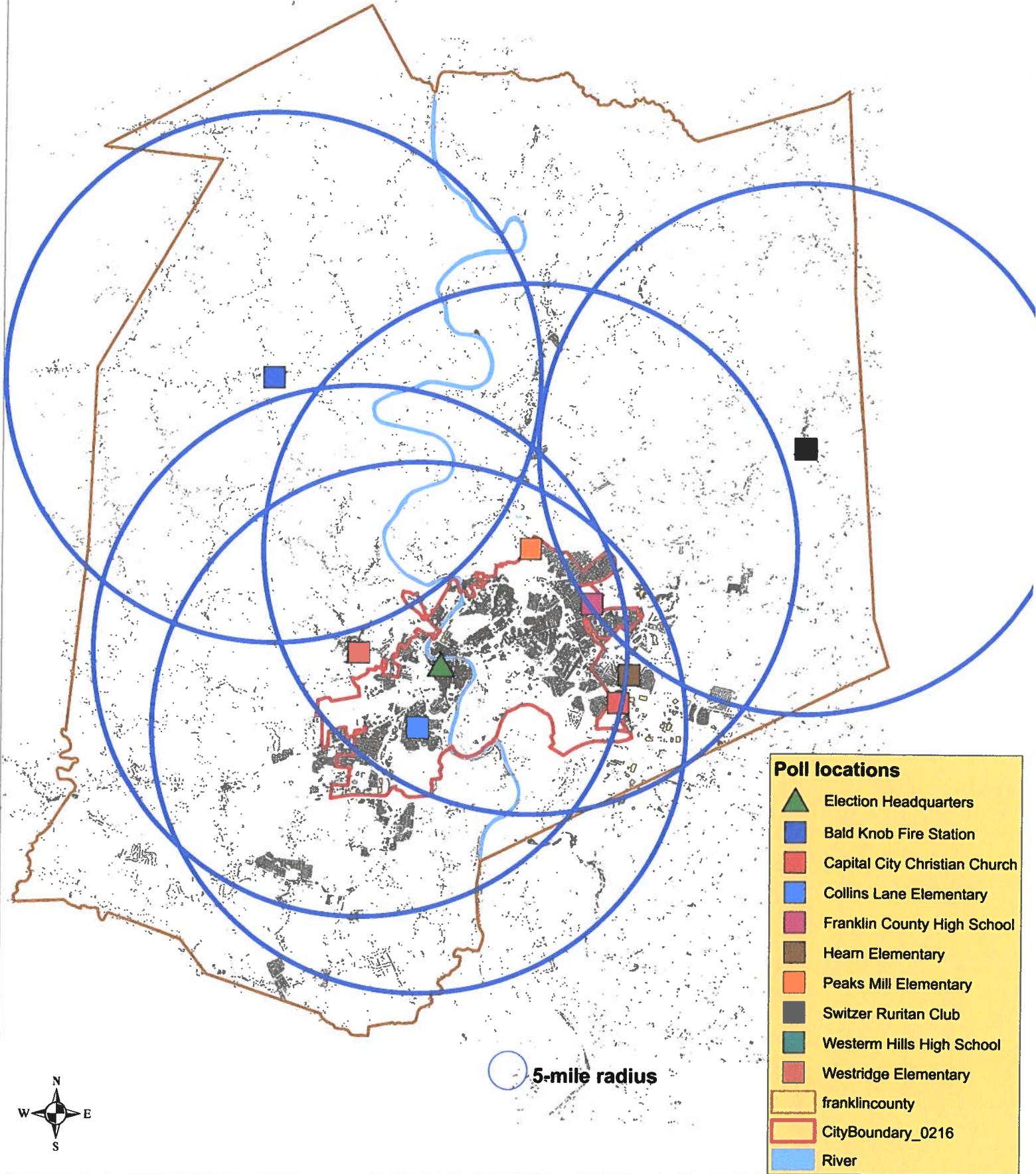
Petition to Consolidate Precincts and Precinct Election Officers

County Name	
FRANKLIN	
Election	
2022 PRIMARY	
Person Completing this Form	
Name	MAYGAN R. FRYMAN
Title	ELECTION DEPUTY CLERK
Phone	502-875-8704
About Voting Location	
<i>Example: Tulip Poplar High, 123 Main Street, County High School</i>	
Name	WESTRIDGE ELEMENTARY
Address	200 PEBBLE BROOK WAY
Type	COUNTY ELEMENTARY SCHOOL
Voting Equipment to be Used	
Number	Type of equipment
2	VERITY SCAN
1	VERITY TOUCHWRITER
4	E-POLLBOOKS

Precincts in Voting Location	
Precinct name	Number of registered voters
F101 BALD KNOB	720
F102A COURTHOUSE	467
F103 ST. JOHN	903
F104A BELLEPOINT	1,107
F105A HICKORY HILLS	1,295
F106 CHOATEVILLE	763
F108 BRIDGEPORT-BOTKIN	1,160

Narrative Plan <i>(please attach additional sheets if needed)</i>	
1.) Why is this consolidation of these precincts desirable? <input checked="" type="checkbox"/> This is the same plan used in the last election Consolidation will help reduce the amount of interactions between precinct workers and voters, while also reducing the risk of contracting or spreading the Covid-19 virus.	
2.) In what manner will Precinct Officers be assigned? <input checked="" type="checkbox"/> This location will be fully staffed with election officials A total of 8 precinct workers will be assigned to this location in order to progress voters through the voting process in a efficient and safe manner.	
3.) How will the voting location be publicized to voters? How will the location be noted as a "Vote Center?" Local newspaper, social media and radio. Road & building signs will be posted at the location.	
4.) How will the voting location serve as a focal point to meet the needs of a diverse community? The school building will provide ample voting space, parking and ease for social distancing and accessibility for voters in this district. Franklin County and its' voters will benefit from the overall logistics and safety, as well as being more cost effective.	

FRANKLIN COUNTY POLL LOCATIONS-2022



2022 Franklin County Election Day plan

Franklin County will establish a total of ten polling locations for election day. Two of the locations will also be utilized as countywide “vote centers” that will serve Franklin County voters for three days of absentee voting as well as election day. Official ballot drop boxes for mailed absentee ballots will be located under surveillance at two locations during the time that absentee ballots will begin being mailed.

- Franklin County Clerks Office- 315 W Main St.
- Franklin County HQ- 317 W 2nd St.

Six accessible locations in local school buildings will serve as polling locations in each magisterial district. In-person voting will be conducted at these locations on election day only, and will serve voters in their corresponding precinct and magisterial district. In addition, Franklin County will utilize “Switzer” and “Bald Knob” precinct locations in the northern rural area of the county to better accommodate voters that do not reside within a 5-mile radius of the previous six locations. Approximately 85% of voters in Franklin County will have a voting location within a 5-mile radius or less to travel if they choose to vote on election day.

The Election Headquarters building, located at 317 W 2nd St. (formerly known as the Frankfort Plant Board building), will serve as a countywide precinct on election day as well as Capital City Christian Church, 15 Locust Dr. (previously known as Jett precinct). The two locations will also serve as the location for in-person early voting beginning May 12th-May 14th, 2022, for the Primary and November 3rd-5th, 2022, for the General. The Election Headquarters office will serve as a central location for the handling of all outgoing and incoming mailed ballots. The mailing process will be handled in the Election HQ facility due to the lack of space and ability to maintain social distancing in the Franklin County Clerk’s Office.

All locations are ADA compliant and will have handicap accessible equipment. Additional precinct officer judges will be stationed at each district location as well as the Election HQ office to accommodate voters in a timely matter. Franklin County will utilize multiple media sources to inform voters of their polling location, such as radio, social media, and local newspaper. Any voter that is unsure of their polling location may also call the election office for assistance. Any voter that appears in the wrong location will be directed to their correct polling location or one of the countywide locations.

Election Day Only Polling Locations

❖ *6 accessible locations; 1 in each Magisterial district all located in school buildings*

1. **District 1- Sherry Sebastian Collins Lane School- 1 Cougar Ln.**
2. **District 2- J.W. Blackburn Hearn Elementary- 300 Copperleaf Blvd.**
3. **District 3- Michael Mueller Franklin County High School- 1100 E Main St.**
4. **District 4- Scotty Tracy Peaks Mill School- 100 Peaks Mill Rd.**
5. **District 5- Marti Booth Western Hills High School- 100 Doctors Dr.**
6. **District 6- Lambert Moore Westridge Elementary School- 200 Pebble Brook**

❖ *2 locations in northern rural areas of Franklin County- Will only serve corresponding precincts*

7. **Switzer Ruritan Club- 3930 Switzer Rd.- Switzer Precinct**
8. **Bald Knob Fire Station- 355 Flat Creek Rd.- Bald Knob & St. John Precincts**

Early Voting / Countywide Election Day

9. **Franklin Co. Election HQ-317 W 2nd St. (Former FPB)**
10. **Capital City Christian Church- 15 Locust Ln**

DISTANCES BETWEEN PRECINCTS & DESIGNATED POLLING LOCATION

District 1- Collins Lane Elementary School -8 Precincts

Farmdale & Evergreen- First Church of God in Bentwoods Subdivision (2.6 mi)

Cloverdale & Thistleton- Collins Lane school (0 mi)

Vogler-Coleman – VFW on 2nd St. (2.2 mi)

Glenns- Bridge- Kings Daughter Apartments (2.2 mi)

Green Wilson- Farmdale Baptist on 127 (6 mi)

Capitol- Governors Garage (1.8 mi)

District 2- Hearn Elementary School- 7 Precincts

Jett (city/co split)- Capital City Christian (1.2 mi)

Country Club (city/co split) & Sunset- ELV (old hearn) (1.7 mi)

Franklin Heights- E Frankfort Park Coach's Building (3.7 mi)

Station Springs- Hearn Elementary (0 mi)

Tierra Linda- KY State Police HQ (1.1 mi)

Bellview- Nazarine Church on Myrtle (2.7 mi)

District 3- Franklin County High School- 8 Precincts

Green Hill- American Legion on Versailles Rd (1.2 mi)

Schenkel Lane- Elkhorn Middle (0 mi)

Arnold- Franklin County High School (0 mi)

Scruggs- Elkhorn Elementary (0.9 mi)

Silver Lake & Russell- Co-Op Ext. Office Lakeview (0.9 mi)

Forks of Elkhorn- Carter House next to FCHS (0 mi)

Ridgeview- Peaks Mill Elementary (2.5 mi)

DISTANCES BETWEEN PRECINCTS & DESIGNATED POLLING LOCATION

District 4- Peaks Mill Elementary School -9 Precincts

Swallowfield & Owenton Rd- Owenton Rd Fire Station (4.3 mi)

Peaks Mill- Peaks Mill School (0 mi)

Switzer – Ruritan Club (8.9mi)

Glenwood & Thornhill- Community Education Center Thornhill (1.9 mi)

Gaines-Holmes- Memorial Baptist on Holmes St. (2.9 mi)

Crestwood- Crestwood Baptist (2.5 mi)

Fairview- KY State Univ. (3 mi)

District 5- Western Hills High School- 5 Precincts

Louisville Rd & Collins Lane – Bridgeport Elementary (0 mi)

South Benson- Evergreen Fire Station (3.7 mi)

Westgate & N. Westgate –Bondurant Middle (0 mi)

District 6- Westridge Elementary School- 7 Precincts

Bald Knob & St. John- Bald Knob Fire Station (9.2 mi)

Courthouse- Fiscal Court Building (3.1 mi)

Bellepoint (split school district)– Bellepoint Baptist (2.7 mi)

Hickory Hills- KY State Univ. (3.4mi)

Choateville- Westridge Elementary (0 mi)

Bridgeport- Botkins- Faith Baptist on Bridgeport Benson Rd. 9 (5.5 mi)

DISTANCES BETWEEN PRECINCTS & DESIGNATED POLLING LOCATION

Switzer Ruritan Club- 3930 Switzer Road (district 4)

Rural polling location option in Switzer in addition to Peaks Mill Elementary School & Election Headquarters

Switzer – Ruritan Club (0 mi)

Bald Knob Fire Station- 355 Flat Creek Road (district 6)

Rural polling location option in Bald Knob in addition to Westridge Elementary School & Election Headquarters

Bald Knob & St. John- Bald Knob Fire Station (0 mi)

Election Headquarters- 317 W 2nd St. (former FPB building)

This location will accommodate voters countywide and will be the designated location for early in-person absentee voting for 3 days

Capital City Christian Church- 15 Locust Lane

Secondary location available during walk-in absentee voting and Election day that will also be able to accommodate voters countywide