



# Commonwealth of Kentucky

## Petition to Consolidate Precincts and Precinct Election Officers

<b>County Name</b>	
GRAVES COUNTY	
<b>Election</b>	
3 DAY EARLY VOTING	
<b>Person Completing this Form</b>	
Name	KIM GILLS
Title	GRAVES COUNTY CLERK
Phone	270-247-1676
<b>About Voting Location</b>	
<i>Example: Tulip Poplar High, 123 Main Street, County High School</i>	
Name	GRAVES COUNTY CLERKS OFFICE
Address	1102 PARIS RD STE 4 MAYFIELD KY 42066
Type	OFFICE BUILDING
<b>Voting Equipment to be Used</b>	
Number	Type of equipment
2	VERITY SCAN
1	Verity Duo Standalone

Precincts in Voting Location	
Precinct name	Number of registered voters
VOTING CENTER	26570

**Narrative Plan** *(please attach additional sheets if needed)*

**1.) Why is this consolidation of these precincts desirable?**  
 This is the same plan used in the last election

SAME PLAN AS LAST ELECTION

**2.) In what manner will Precinct Officers be assigned?**  
 This location will be fully staffed with election officials

WILL BE FULLY STAFFED

**3.) How will the voting location be publicized to voters? How will the location be noted as a "Vote Center?"**

WE WILL BE GOING THROUGH SOCIAL MEDIA, NEWSPAPER, AND THE LOCAL TV NEWS STATION

**4.) How will the voting location serve as a focal point to meet the needs of a diverse community?**

IT IS A VOTING CENTER SO EVERYONE WILL BE ABLE TO HAVE ACCESS TO COME AND VOTE DURING THE 3 DAYS AND IT IS CENTRALLY LOCATED IN THE MIDDLE OF TOWN. THERE IS PLENTY OF PARKING AND ENOUGH SPACE FOR VOTING.





# Commonwealth of Kentucky

## Petition to Consolidate Precincts and Precinct Election Officers

<b>County Name</b>	
GRAVES COUNTY	
<b>Election</b>	
MAY 17, 2022	
<b>Person Completing this Form</b>	
Name	KIM GILLS
Title	GRAVES COUNTY CLERK
Phone	270-247-1676
<b>About Voting Location</b>	
<i>Example: Tulip Poplar High, 123 Main Street, County High School</i>	
Name	MAYFIELD HIGH SCHOOL
Address	700 DOUTHITT ST MAYFIELD KY 42066
Type	CITY HIGH SCHOOL
<b>Voting Equipment to be Used</b>	
Number	Type of equipment
2	VERITY SCAN
1	Verity Duo Standalone

Precincts in Voting Location	
Precinct name	Number of registered voters
VOTING CENTER	26570

<b>Narrative Plan</b> <i>(please attach additional sheets if needed)</i>
<b>1.) Why is this consolidation of these precincts desirable?</b> <input type="checkbox"/> This is the same plan used in the last election  SAME PLAN AS LAST ELECTION
<b>2.) In what manner will Precinct Officers be assigned?</b> <input type="checkbox"/> This location will be fully staffed with election officials  WILL BE FULLY STAFFED
<b>3.) How will the voting location be publicized to voters? How will the location be noted as a "Vote Center?"</b>  WE WILL BE GOING THROUGH SOCIAL MEDIA, NEWSPAPER, AND THE LOCAL TV NEWS STATION
<b>4.) How will the voting location serve as a focal point to meet the needs of a diverse community?</b>  IT IS A VOTING CENTER SO EVERYONE WILL BE ABLE TO HAVE ACCESS TO ANY OF THE SIX LOCATIONS. IT WILL MAKE IT EAIER FOR THE VOTERS TO PICK WHICH ONE IS MOST CONVENIENT AND CLOSEST TO THEM.



# Commonwealth of Kentucky

## Petition to Consolidate Precincts and Precinct Election Officers

<b>County Name</b>	
GRAVES COUNTY	
<b>Election</b>	
MAY 17, 2022	
<b>Person Completing this Form</b>	
Name	KIM GILLS
Title	GRAVES COUNTY CLERK
Phone	270-247-1676
<b>About Voting Location</b>	
<i>Example: Tulip Poplar High, 123 Main Street, County High School</i>	
Name	SEDALIA ELEMENTARY SCHOOL
Address	5252 ST RT 97 MAYFIELD KY 42066
Type	COUNTY ELEMENTARY SCHOOL
<b>Voting Equipment to be Used</b>	
<b>Number</b>	<b>Type of equipment</b>
2	VERITY SCAN
1	Verity Duo Standalone

<b>Precincts in Voting Location</b>	
Precinct name	Number of registered voters
VOTING CENTER	26570

<b>Narrative Plan</b> <i>(please attach additional sheets if needed)</i>
<b>1.) Why is this consolidation of these precincts desirable?</b> <input type="checkbox"/> This is the same plan used in the last election  SAME PLAN AS LAST ELECTION
<b>2.) In what manner will Precinct Officers be assigned?</b> <input type="checkbox"/> This location will be fully staffed with election officials  WILL BE FULLY STAFFED
<b>3.) How will the voting location be publicized to voters? How will the location be noted as a "Vote Center?"</b> WE WILL BE GOING THROUGH SOCIAL MEDIA, NEWSPAPER, AND THE LOCAL TV NEWS STATION
<b>4.) How will the voting location serve as a focal point to meet the needs of a diverse community?</b>  IT IS A VOTING CENTER SO EVERYONE WILL BE ABLE TO HAVE ACCESS TO ANY OF THE SIX LOCATIONS. IT WILL MAKE IT EASIER FOR THE VOTERS TO PICK WHICH ONE IS MOST CONVENIENT AND CLOSEST TO THEM.







# Commonwealth of Kentucky

## Petition to Consolidate Precincts and Precinct Election Officers

<b>County Name</b>	
GRAVES COUNTY	
<b>Election</b>	
MAY 17, 2022	
<b>Person Completing this Form</b>	
Name	KIM GILLS
Title	GRAVES COUNTY CLERK
Phone	270-247-1676
<b>About Voting Location</b>	
<i>Example: Tullip Poplar High, 123 Main Street, County High School</i>	
Name	FANCY FARM ELEMENTARY SCHOOL
Address	270 ST RT 339 FANCY FARM KY 42039
Type	COUNTY ELEMENTARY SCHOOL
<b>Voting Equipment to be Used</b>	
Number	Type of equipment
2	VERITY SCAN
1	Verity Duo Standalone

Precincts in Voting Location	
Precinct name	Number of registered voters
VOTING CENTER	26570

**Narrative Plan** *(please attach additional sheets if needed)*

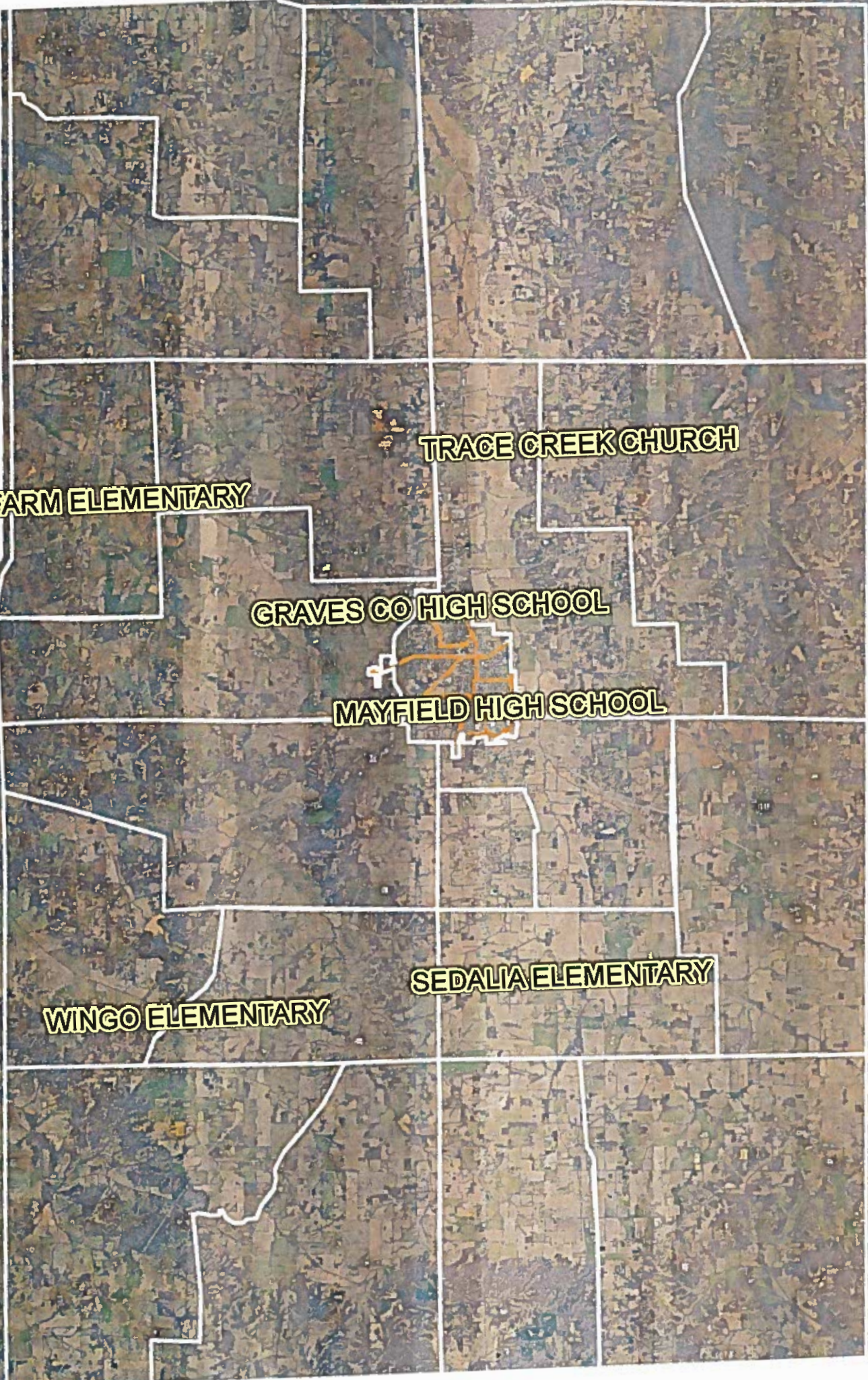
**1.) Why is this consolidation of these precincts desirable?**  
 This is the same plan used in the last election  
 SAME PLAN AS LAST ELECTION

**2.) In what manner will Precinct Officers be assigned?**  
 This location will be fully staffed with election officials  
 WILL BE FULLY STAFFED

**3.) How will the voting location be publicized to voters? How will the location be noted as a "Vote Center?"**  
 WE WILL BE GOING THROUGH SOCIAL MEDIA, NEWSPAPER, AND THE LOCAL TV NEWS STATION

**4.) How will the voting location serve as a focal point to meet the needs of a diverse community?**  
 IT IS A VOTING CENTER SO EVERYONE WILL BE ABLE TO HAVE ACCESS TO ANY OF THE SIX LOCATIONS. IT WILL MAKE IT EASIER FOR THE VOTERS TO PICK WHICH ONE IS MOST CONVENIENT AND CLOSEST TO THEM.





**FANCY FARM ELEMENTARY**

**TRACE CREEK CHURCH**

**GRAVES CO HIGH SCHOOL**

**MAYFIELD HIGH SCHOOL**

**WINGO ELEMENTARY**

**SEDALIA ELEMENTARY**