

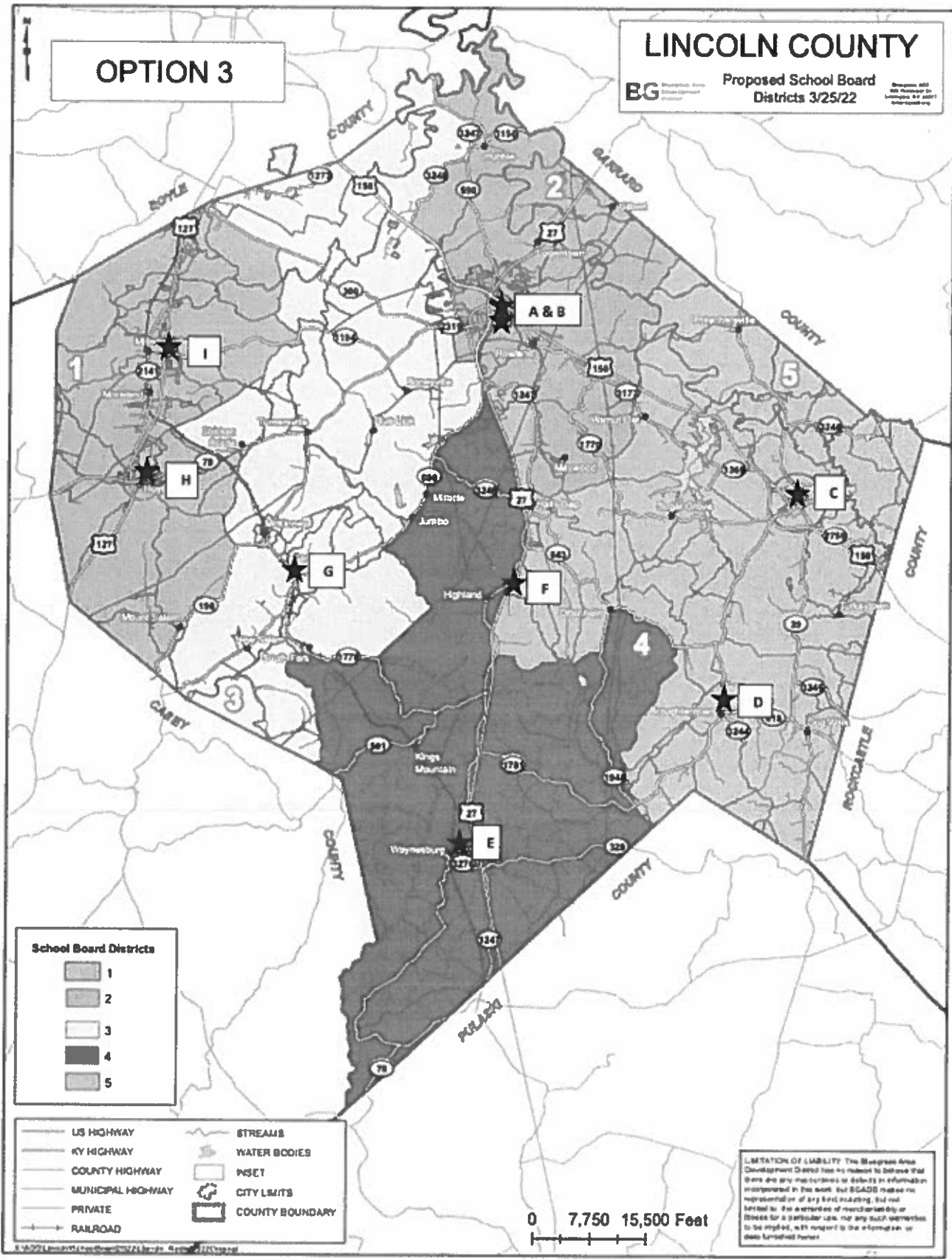
# OPTION 3

# LINCOLN COUNTY

**BG** Bluescape Area Development

Proposed School Board  
Districts 3/25/22

Bluescape Area Development is not responsible for any errors or omissions on this map.



| School Board Districts |   |
|------------------------|---|
|                        | 1 |
|                        | 2 |
|                        | 3 |
|                        | 4 |
|                        | 5 |

|  |                   |  |                 |
|--|-------------------|--|-----------------|
|  | US HIGHWAY        |  | STREAMS         |
|  | KY HIGHWAY        |  | WATER BODIES    |
|  | COUNTY HIGHWAY    |  | PCSET           |
|  | MUNICIPAL HIGHWAY |  | CITY LIMITS     |
|  | PRIVATE           |  | COUNTY BOUNDARY |
|  | RAILROAD          |  |                 |

0 7,750 15,500 Feet

**LIMITATION OF LIABILITY:** The Bluescape Area Development District does not warrant or represent that there are any inaccuracies or omissions in information incorporated in this work. BGAD makes no representation of any kind regarding, but not limited to, the accuracy of merchantability or fitness for a particular use, nor any such warranties to be implied, with respect to the information or data furnished herein.

## **LINCOLN COUNTY POLLING LOCATIONS:**

- A. Lincoln County Clerk's Office – 301 N 3<sup>rd</sup> St., Stanford, KY 40484

### **Election Day Polling Locations (All Precincts):**

- B. Stanford Baptist CLC – 204 Church St, Stanford, KY 40484
- C. Crab Orchard Elementary (Cafeteria) – 137 Lancaster St, Crab Orchard, KY 40419
- D. Broughtontown Community Center – 8305 KY Hwy 1781, Crab Orchard, KY 40419
- E. Waynesburg Elementary – 345 KY Hwy 328 W, Waynesburg, KY 40489
- F. Highland Elementary – 75 Tick Ridge Rd, Waynesburg, KY 40489
- G. Geneva Fire Station – 120 Geneva McKinney Rd, Hustonville, KY 40437
- H. Hustonville Elementary – 93 College St, Hustonville, KY 40437
- I. New Hope Baptist Church – 61 Roman Rd, Stanford, KY 40484





















| PRECINCT | NUMBER OF REGISTERED VOTERS |
|----------|-----------------------------|
| A101     | 300                         |
| A101 A   | 893                         |
| A102     | 1015                        |
| A102 A   | 722                         |
| A103     | 149                         |
| A103 A   | 956                         |
| A104     | 492                         |
| B101     | 798                         |
| B101 B   | 229                         |
| B102     | 537                         |
| B102 B   | 352                         |
| B103     | 768                         |
| B104     | 1415                        |
| C101     | 1203                        |
| C102     | 735                         |
| C102 C   | 3                           |
| C103     | 712                         |
| C104     | 1719                        |
| D101     | 383                         |
| D101 D   | 303                         |
| D102     | 631                         |
| D103     | 2053                        |
| D103 D   | 1                           |
| D105     | 615                         |
| D106     | 572                         |