



# Commonwealth of Kentucky

## Petition to Consolidate Precincts and Precinct Election Officers

<b>County Name</b>	
Madison	
<b>Election</b>	
2022 Primary Election Day	
<b>Person Completing this Form</b>	
Name	Danielle Mitchell
Title	Election Coordinator
Phone	859-624-4703
<b>About Voting Location</b>	
<i>Example: Tulip Poplar High, 123 Main Street, County High School</i>	
Name	First Baptist Church
Address	425 Eastern Bypass Richmond
Type	Church
<b>Voting Equipment to be Used</b>	
<b>Number</b>	<b>Type of equipment</b>
3	DS200 Scanners
16	Express Vote Machines
4	Tenex ePollBooks

<b>Precincts in Voting Location</b>	
Precinct name	Number of registered voters
All Precincts	73,998

<b>Narrative Plan</b> <i>(please attach additional sheets if needed)</i>
<b>1.) Why is this consolidation of these precincts desirable?</b> <input checked="" type="checkbox"/> This is the same plan used in the last election  This consolidated plan is requested to decrease the number of locations and election officers in order to be more cost effective and also due to the lack of available locations in the county that can service a large number of voters on Election Day. All voting precincts will be available on the Express Votes so voters can vote at any location.
<b>2.) In what manner will Precinct Officers be assigned?</b> <input checked="" type="checkbox"/> This location will be fully staffed with election officials  Based on experience, proximity, and availability. Will have 10 or 12 workers with party parity.
<b>3.) How will the voting location be publicized to voters? How will the location be noted as a "Vote Center?"</b>  Will be noted as a vote center through push media, newspapers, and website advertisements.
<b>4.) How will the voting location serve as a focal point to meet the needs of a diverse community?</b>  The First Baptist Church was used as a voting location in the 2020 General election. It has ample parking, ADA compliant, plenty of room inside to spread out, and is easy to get in and out of. It is located in the western end of Richmond, close for the Southwestern part of the county for voter convenience.



**Commonwealth of Kentucky**  
**Petition to Consolidate Precincts and Precinct Election Officers**

<b>County Name</b>	
Madison	
<b>Election</b>	
2022 Primary Election Day	
<b>Person Completing this Form</b>	
Name	Danielle Mitchell
Title	Election Coordinator
Phone	859-624-4703
<b>About Voting Location</b> <i>Example: Tulip Poplar High, 123 Main Street, County High School</i>	
Name	Eastside Community Church
Address	425 Eastern Bypass Richmond
Type	Church
<b>Voting Equipment to be Used</b>	
<b>Number</b>	<b>Type of equipment</b>
3	DS200 Scanners
16	Express Vote Machines
4	Tenex ePollBooks

<b>Precincts in Voting Location</b>	
Precinct name	Number of registered voters
All Precincts	73,998

**Narrative Plan** *(please attach additional sheets if needed)*

**1.) Why is this consolidation of these precincts desirable?**  
 This is the same plan used in the last election

This consolidated plan is requested to decrease the number of locations and election officers in order to be more cost effective and also due to the lack of available locations in the county that can service a large number of voters on Election Day. All voting precincts will be available on the Express Votes so voters can vote at any location.

**2.) In what manner will Precinct Officers be assigned?**  
 This location will be fully staffed with election officials

Based on experience, proximity, and availability. Will have 10 or 12 workers with party parity.

**3.) How will the voting location be publicized to voters? How will the location be noted as a "Vote Center?"**

Will be noted as a vote center through push media, newspapers, and website advertisements.

**4.) How will the voting location serve as a focal point to meet the needs of a diverse community?**

The Eastside Community Church was used as a voting location in the 2020 General election. It has ample parking, ADA compliant, plenty of room inside to spread out. It is located in the Eastern part of the county for voter convenience.



# Commonwealth of Kentucky

## Petition to Consolidate Precincts and Precinct Election Officers

<b>County Name</b>	
Madison	
<b>Election</b>	
2022 Primary Election Day	
<b>Person Completing this Form</b>	
Name	Danielle Mitchell
Title	Election Coordinator
Phone	859-624-4703
<b>About Voting Location</b>	
<i>Example: Tulip Poplar High, 123 Main Street, County High School</i>	
Name	Russel Acton Folk Center
Address	212 W. Jefferson St. Berea
Type	Community Event Center
<b>Voting Equipment to be Used</b>	
<b>Number</b>	<b>Type of equipment</b>
3	DS200 Scanners
16	Express Vote Machines
4	Tenex ePollBooks

<b>Precincts in Voting Location</b>	
Precinct name	Number of registered voters
All Precincts	73,998

<b>Narrative Plan</b> <i>(please attach additional sheets if needed)</i>
<p><b>1.) Why is this consolidation of these precincts desirable?</b></p> <p><input checked="" type="checkbox"/> This is the same plan used in the last election</p> <p>This consolidated plan is requested to decrease the number of locations and election officers in order to be more cost effective and also due to the lack of available locations in the county that can service a large number of voters on Election Day. All voting precincts will be available on the Express Votes so voters can vote at any location.</p>
<p><b>2.) In what manner will Precinct Officers be assigned?</b></p> <p><input checked="" type="checkbox"/> This location will be fully staffed with election officials</p> <p>Based on experience, proximity, and availability. Will have 10 or 12 workers with party parity.</p>
<p><b>3.) How will the voting location be publicized to voters? How will the location be noted as a "Vote Center?"</b></p> <p>Will be noted as a vote center through push media, newspapers, and website advertisements.</p>
<p><b>4.) How will the voting location serve as a focal point to meet the needs of a diverse community?</b></p> <p>The Folk Center has been used as a precinct location for years and the community is familiar with the location, as is it located on a highly traveled road in Berea. It has plenty of parking and is ADA compliant.</p>



## Commonwealth of Kentucky

### Petition to Consolidate Precincts and Precinct Election Officers

<b>County Name</b>	
Madison	
<b>Election</b>	
2022 Primary Election Day	
<b>Person Completing this Form</b>	
Name	Danielle Mitchell
Title	Election Coordinator
Phone	859-624-4703
<b>About Voting Location</b>	
<i>Example: Tulip Poplar High, 123 Main Street, County High School</i>	
Name	Berea Church of God
Address	189 Rash Rd Berea
Type	Church
<b>Voting Equipment to be Used</b>	
<b>Number</b>	<b>Type of equipment</b>
3	DS200 Scanners
16	Express Vote Machines
4	Tenex ePollBooks

<b>Precincts in Voting Location</b>	
Precinct name	Number of registered voters
All Precincts	73,998

<b>Narrative Plan</b> <i>(please attach additional sheets if needed)</i>
<b>1.) Why is this consolidation of these precincts desirable?</b> <input checked="" type="checkbox"/> This is the same plan used in the last election  This consolidated plan is requested to decrease the number of locations and election officers in order to be more cost effective and also due to the lack of available locations in the county that can service a large number of voters on Election Day. All voting precincts will be available on the Express Votes so voters can vote at any location.
<b>2.) In what manner will Precinct Officers be assigned?</b> <input checked="" type="checkbox"/> This location will be fully staffed with election officials  Based on experience, proximity, and availability. Will have 10 or 12 workers with party parity.
<b>3.) How will the voting location be publicized to voters? How will the location be noted as a "Vote Center?"</b>  Will be noted as a vote center through push media, newspapers, and website advertisements.
<b>4.) How will the voting location serve as a focal point to meet the needs of a diverse community?</b>  The Berea Church of God was used as a voting location in the 2020 General election. It has ample parking, ADA compliant, plenty of room inside to spread out, and is easy to get in and out of. It is located between several previous precinct locations, so is easy for voters to find.



# Commonwealth of Kentucky

## Petition to Consolidate Precincts and Precinct Election Officers

<b>County Name</b>	
Madison	
<b>Election</b>	
2022 Primary Election Day	
<b>Person Completing this Form</b>	
Name	Danielle Mitchell
Title	Election Coordinator
Phone	859-624-4703
<b>About Voting Location</b>	
<i>Example: Tulip Poplar High, 123 Main Street, County High School</i>	
Name	White Hall Baptist Church
Address	3401 Colonel Rd Richmond
Type	Church
<b>Voting Equipment to be Used</b>	
<b>Number</b>	<b>Type of equipment</b>
3	DS200 Scanners
16	Express Vote Machines
4	Tenex ePollBooks

<b>Precincts in Voting Location</b>	
<b>Precinct name</b>	<b>Number of registered voters</b>
All Precincts	73,998

### **Narrative Plan** (please attach additional sheets if needed)

#### 1.) Why is this consolidation of these precincts desirable?

- This is the same plan used in the last election

This consolidated plan is requested to decrease the number of locations and election officers in order to be more cost effective and also due to the lack of available locations in the county that can service a large number of voters on Election Day. All voting precincts will be available on the Express Votes so voters can vote at any location.

#### 2.) In what manner will Precinct Officers be assigned?

- This location will be fully staffed with election officials

Based on experience, proximity, and availability. Will have 10 or 12 workers with party parity.

#### 3.) How will the voting location be publicized to voters? How will the location be noted as a "Vote Center?"

Will be noted as a vote center through push media, newspapers, and website advertisements.

#### 4.) How will the voting location serve as a focal point to meet the needs of a diverse community?

The White Hall Baptist Church was used as a voting location in the 2020 General election. It has ample parking, ADA compliant, plenty of room inside to spread out, and is easy to get in and out of. It is located at the Northern end of the county and near the interstate for voter convenience.



# Commonwealth of Kentucky

## Petition to Consolidate Precincts and Precinct Election Officers

<b>County Name</b>	
Madison	
<b>Election</b>	
2022 Primary Election Day	
<b>Person Completing this Form</b>	
Name	Danielle Mitchell
Title	Election Coordinator
Phone	859-624-4703
<b>About Voting Location</b>	
<i>Example: Tulip Poplar High, 123 Main Street, County High School</i>	
Name	Madison County Extension Office
Address	230 Duncannon Ln. Richmond
Type	Community Extension Center
<b>Voting Equipment to be Used</b>	
<b>Number</b>	<b>Type of equipment</b>
3	DS200 Scanners
16	Express Vote Machines
4	Tenex ePollBooks

<b>Precincts in Voting Location</b>	
<b>Precinct name</b>	<b>Number of registered voters</b>
All Precincts	73,998

**Narrative Plan** *(please attach additional sheets if needed)*

**1.) Why is this consolidation of these precincts desirable?**

- This is the same plan used in the last election

This consolidated plan is requested to decrease the number of locations and election officers in order to be more cost effective and also due to the lack of available locations in the county that can service a large number of voters on Election Day. All voting precincts will be available on the Express Votes so voters can vote at any location.

**2.) In what manner will Precinct Officers be assigned?**

- This location will be fully staffed with election officials

Based on experience, proximity, and availability. Will have 10 or 12 workers with party parity.

**3.) How will the voting location be publicized to voters? How will the location be noted as a "Vote Center?"**

Will be noted as a vote center through push media, newspapers, and website advertisements.

**4.) How will the voting location serve as a focal point to meet the needs of a diverse community?**

The Extension Office has been used as a precinct location for the past couple of elections. It is centrally located between Richmond and Berea off of the Interstate, and is ADA compliant.



# Commonwealth of Kentucky

## Petition to Consolidate Precincts and Precinct Election Officers

<b>County Name</b>	
Madison	
<b>Election</b>	
2022 Primary Election Day	
<b>Person Completing this Form</b>	
Name	Danielle Mitchell
Title	Election Coordinator
Phone	859-624-4703
<b>About Voting Location</b>	
<i>Example: Tulip Poplar High, 123 Main Street, County High School</i>	
Name	Mule Barn
Address	1510 Lexington Rd Richmond
Type	EKU Community Venue
<b>Voting Equipment to be Used</b>	
<b>Number</b>	<b>Type of equipment</b>
3	DS200 Scanners
16	Express Vote Machines
4	Tenex ePollBooks

<b>Precincts in Voting Location</b>	
Precinct name	Number of registered voters
All Precincts	73,998

**Narrative Plan** *(please attach additional sheets if needed)*

1.) Why is this consolidation of these precincts desirable?  
 This is the same plan used in the last election

This consolidated plan is requested to decrease the number of locations and election officers in order to be more cost effective and also due to the lack of available locations in the county that can service a large number of voters on Election Day. All voting precincts will be available on the Express Votes so voters can vote at any location.

2.) In what manner will Precinct Officers be assigned?  
 This location will be fully staffed with election officials

Based on experience, proximity, and availability. Will have 10 or 12 workers with party parity.

3.) How will the voting location be publicized to voters? How will the location be noted as a "Vote Center?"

Will be noted as a vote center through push media, newspapers, and website advertisements.

4.) How will the voting location serve as a focal point to meet the needs of a diverse community?

The Mule Barn is strategically located in downtown Richmond. It has ample parking and is ADA compliant.



**Commonwealth of Kentucky**  
**Petition to Consolidate Precincts and Precinct Election Officers**

<b>County Name</b>	
Madison	
<b>Election</b>	
2022 Primary Early Voting	
<b>Person Completing this Form</b>	
Name	Danielle Mitchell
Title	Election Coordinator
Phone	859-624-4703
<b>About Voting Location</b>	
<i>Example: Tulip Poplar High, 123 Main Street, County High School</i>	
Name	Mule Barn
Address	1510 Lexington Rd Richmond
Type	EKU Community Venue
<b>Voting Equipment to be Used</b>	
<b>Number</b>	<b>Type of equipment</b>
2	DS200 Scanners
8	Express Vote Machines
2	Tenex ePollBooks

<b>Precincts in Voting Location</b>	
Precinct name	Number of registered voters
All Precincts	73,998

<b>Narrative Plan</b> <i>(please attach additional sheets if needed)</i>
<b>1.) Why is this consolidation of these precincts desirable?</b> <input type="checkbox"/> This is the same plan used in the last election  This consolidated plan is requested to decrease the number of locations and election officers in order to be more cost effective and also due to the lack of available locations in the county that can service our early voting needs. All voting precincts will be available on the Express Votes so voters can vote at any location.
<b>2.) In what manner will Precinct Officers be assigned?</b> <input checked="" type="checkbox"/> This location will be fully staffed with election officials  Based on experience, proximity, and availability. Will have 6 or 8 workers with party parity.
<b>3.) How will the voting location be publicized to voters? How will the location be noted as a "Vote Center?"</b>  Will be noted as a vote center through push media, newspapers, and website advertisements.
<b>4.) How will the voting location serve as a focal point to meet the needs of a diverse community?</b>  The Mule Barn is strategically located in downtown Richmond. It has ample parking and is ADA compliant.





# Commonwealth of Kentucky

## Petition to Consolidate Precincts and Precinct Election Officers

<b>County Name</b>	
Madison	
<b>Election</b>	
2022 Primary Early Voting	
<b>Person Completing this Form</b>	
Name	Danielle Mitchell
Title	Election Coordinator
Phone	859-624-4703
<b>About Voting Location</b>	
<i>Example: Tulip Poplar High, 123 Main Street, County High School</i>	
Name	Russel Acton Folk Center
Address	212 W. Jefferson St. Berea
Type	Community Event Center
<b>Voting Equipment to be Used</b>	
<b>Number</b>	<b>Type of equipment</b>
2	DS200 Scanner
8	Express Vote Machines
2	Tenex ePollBooks

<b>Precincts in Voting Location</b>	
Precinct name	Number of registered voters
All Precincts	73,998

<b>Narrative Plan</b> <i>(please attach additional sheets if needed)</i>
<p><b>1.) Why is this consolidation of these precincts desirable?</b></p> <p><input checked="" type="checkbox"/> This is the same plan used in the last election</p> <p>This consolidated plan is requested to decrease the number of locations and election officers in order to be more cost effective and also due to the lack of available locations in the county that can service our early voting needs. All voting precincts will be available on the Express Votes so voters can vote at any location.</p>
<p><b>2.) In what manner will Precinct Officers be assigned?</b></p> <p><input checked="" type="checkbox"/> This location will be fully staffed with election officials</p> <p>Based on experience, proximity, and availability. Will have 6 or 8 workers with party parity.</p>
<p><b>3.) How will the voting location be publicized to voters? How will the location be noted as a "Vote Center?"</b></p> <p>Will be noted as a vote center through push media, newspapers, and website advertisements</p>
<p><b>4.) How will the voting location serve as a focal point to meet the needs of a diverse community?</b></p> <p>The Folk Center has been used as a precinct location for years and the community knows where it is located. It has serviced us well during the past elections as it is strategically located in Berea, and is ADA Compliant.</p>



# Commonwealth of Kentucky

## Petition to Consolidate Precincts and Precinct Election Officers

<b>County Name</b>	
Madison	
<b>Election</b>	
2022 Primary Early Voting	
<b>Person Completing this Form</b>	
Name	Danielle Mitchell
Title	Election Coordinator
Phone	859-624-4703
<b>About Voting Location</b>	
<i>Example: Tulip Poplar High, 123 Main Street, County High School</i>	
Name	Madison Co. Extension Office
Address	230 Duncannon Ln Richmond
Type	Community Extension Center
<b>Voting Equipment to be Used</b>	
<b>Number</b>	<b>Type of equipment</b>
2	DS200 Scanner
8	Express Vote Machines
2	Tenex ePollBooks

<b>Precincts in Voting Location</b>	
Precinct name	Number of registered voters
All Precincts	73,998

**Narrative Plan** *(please attach additional sheets if needed)*

**1.) Why is this consolidation of these precincts desirable?**  
 This is the same plan used in the last election

This consolidated plan is requested to decrease the number of locations and election officers in order to be more cost effective and also due to the lack of available locations in the county that can service our early voting needs. All precincts will be available on the Express Votes so any voters can vote at any location.

**2.) In what manner will Precinct Officers be assigned?**  
 This location will be fully staffed with election officials

Based on experience, proximity, and availability. Will have 6 or 8 workers with party parity.

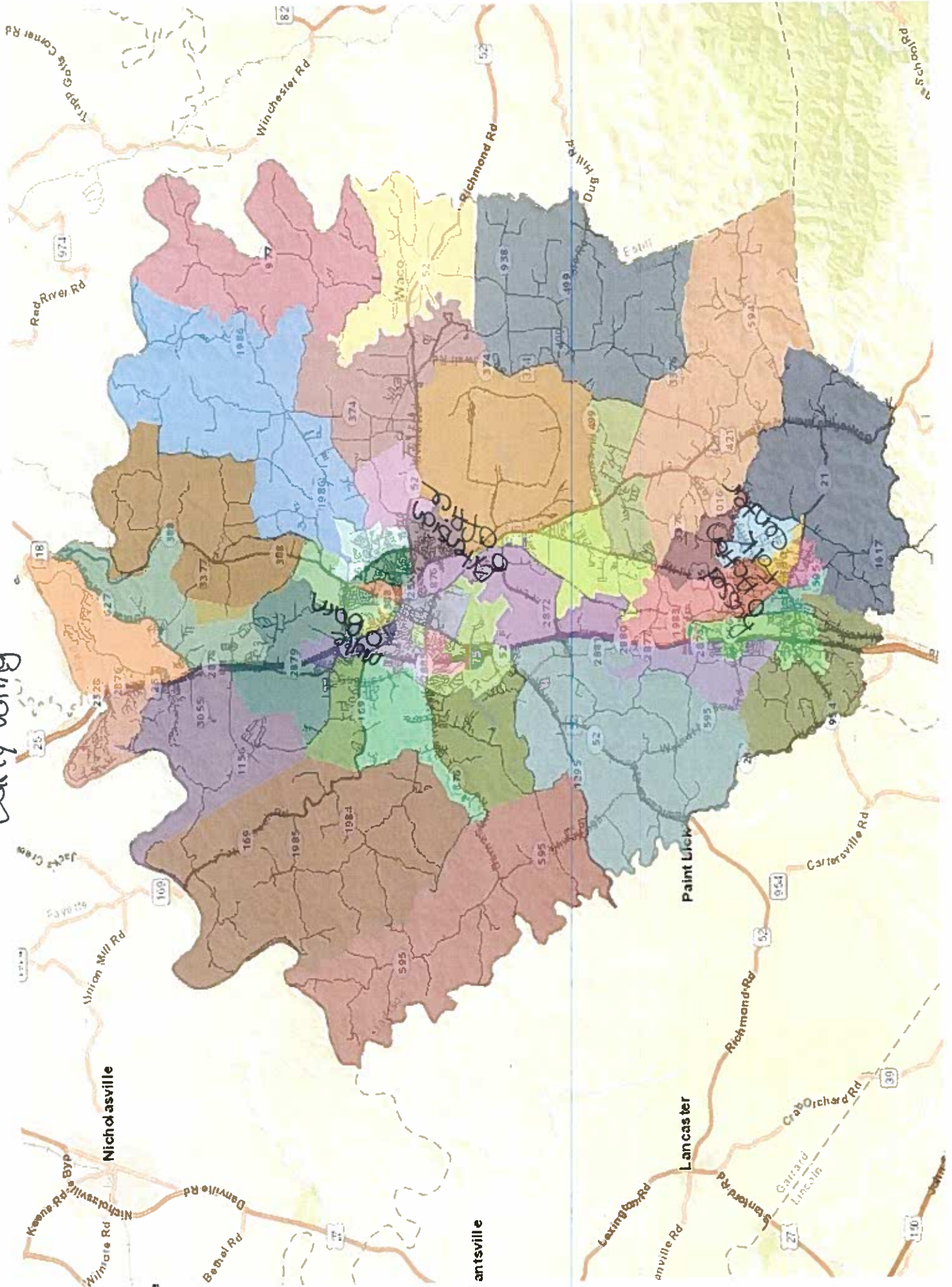
**3.) How will the voting location be publicized to voters? How will the location be noted as a "Vote Center?"**

Will be noted as a vote center through push media, newspapers, and website advertisements

**4.) How will the voting location serve as a focal point to meet the needs of a diverse community?**

The Extension Office has been used as a precinct location for the past couple of elections. It is centrally located between Richmond and Berea off the Interstate, and is ADA compliant.

Early voting



Waco

Paint Lick

Lancaster

Nicholasville

# Election Day

