



516 Hillcrest Drive
P.O. Box 614
Brandenburg, KY 40108

Susan Masterson
Meade County Clerk

Office (270) 422-2152
Fax (270) 422-2158

**MEADE COUNTY VOTING PLAN FOR ELECTION DAY
PRIMARY 2023**

Precinct A101 (Muldraugh) – this precinct is in an area that is not centrally located in the county. Most of this precinct is the city of Muldraugh. We are leaving this precinct to vote in their normal location at Muldraugh City Hall. This precinct will be the only precinct voting at this location.

We will have a consolidated voting location at Flaherty Elementary School. Voting at this school will be Precincts A102, C101, C102, C103 and E103. These precincts already vote at this school but will be consolidated.

We will have a consolidated voting location at Ekron Elementary School. Voting at this school will be Precincts E101, E102 and F105. These precincts already vote at this school but will be consolidated.

We will have a consolidated voting location at Payneville Elementary School. Voting at this school will be Precincts F101, F102 and F103. These precincts already vote at this school but will be consolidated.

We will have a consolidated voting location at Stuart Pepper Middle School. Voting at this school will be Precincts B101, B102, B103 and D102. These precincts use to vote at this location but due to renovation was moved temporarily. We are now moving these precincts back to their normal voting location but will be consolidated.

We will have a County-wide Vote Center at the Meade County High School. This school will serve all citizens of the County. It is centrally located and can accommodate large crowds.

NO EXCUSE EARLY VOTING

We will have our no excuse absentee voting at the Home and Garden Building located at the Meade County Fairgrounds. It is centrally located in the county and is a large building able to accommodate many voters at one time. It is also ADA compliant and has many disabled parking spaces.

EXCUSED IN-PERSON ABSENTEE VOTING

Our excused in-person absentee voting will be held in the office of the Meade County Clerk. It is centrally located and ADA compliant and has many disabled parking spaces.



Commonwealth of Kentucky

Petition to Consolidate Precincts and Precinct Election Officers

County Name	
MEADE	
Election	Dates of Voting
PRIMARY 2023	ELECTION DAY
Person Completing this Form	
Name	SUSAN MASTERSON
Title	MEADE COUNTY CLERK
Phone	270-422-2152
About Voting Location	
<i>Example: Tulip Poplar High, 123 Main Street, County High School</i>	
Name	EKRON ELEMENTARY SCHOOL
Address	2500 HAYSVILLE RD. EKRON, KY 40117
Type	SCHOOL
Voting Equipment to be Used	
Number	Type of equipment
3	E-POLL BOOKS
2	VERITY SCAN
1	VERITY TOUCH WRITER

Precincts in Voting Location	
Precinct name	Number of registered voters
E101	1236
E102	1237
F105	913

Narrative Plan (please attach additional sheets if needed)

1.) Why is this consolidation of these precincts desirable?
 This is the same plan used in the last election

VOTERS IN THESE PRECINCTS WILL BE GOING TO THEIR REGULAR POLLING LOCATION, BUT WILL NOT NEED TO DETERMINE WHICH LINE THEY SHOULD BE IN. THIS WILL ALLOW FOR FEWER POLL WORKERS AND EQUIPMENT TO BE USED.

2.) In what manner will Precinct Officers be assigned?
 This location will be fully staffed with election officials

2--CLERKS--2 JUDGES--2 SHERIFFS
 MAINTAINING PARITY OF PARTIES

3.) How will the voting location be publicized to voters? How will the location be noted as a "Vote Center?"

RADIO, LOCAL NEWSPAPER, SOCIAL MEDIA

4.) How will the voting location serve as a focal point to meet the needs of a diverse community?

THESE PRECINCTS ALWAYS VOTE IN THIS BUILDING, BUT BY CONSOLIDATING THE PRECINCTS, THERE WILL BE LESS CONFUSION AS TO WHICH LINES THEY ACTUALLY NEED TO BE IN.



Commonwealth of Kentucky

Petition to Consolidate Precincts and Precinct Election Officers

County Name	
MEADE	
Election	Dates of Voting
PRIMARY 2023	ELECTION DAY
Person Completing this Form	
Name	SUSAN MASTERSON
Title	MEADE COUNTY CLERK
Phone	270-422-2152
About Voting Location	
<i>Example: Tulip Poplar High, 123 Main Street, County High School</i>	
Name	FLAHERTY ELEMENTARY SCHOOL
Address	2615 FLAHERTY RD. EKRON, KY 40117
Type	SCHOOL
Voting Equipment to be Used	
Number	Type of equipment
4	E-POLL BOOKS
3	VERITY SCAN
1	VERITY TOUCH WRITER

Precincts in Voting Location	
Precinct name	Number of registered voters
A102	2161
C101	1286
C102	1433
C103	1308
E103	1520

Narrative Plan <i>(please attach additional sheets if needed)</i>
1.) Why is this consolidation of these precincts desirable? <input checked="" type="checkbox"/> This is the same plan used in the last election VOTERS IN THESE PRECINCTS WILL BE GOING TO THEIR REGULAR POLLING LOCATION, BUT WILL NOT NEED TO DETERMINE WHICH LINE THEY SHOULD BE IN. THIS WILL ALLOW FOR FEWER POLL WORKERS AND EQUIPMENT TO BE USED.
2.) In what manner will Precinct Officers be assigned? <input type="checkbox"/> This location will be fully staffed with election officials 4 CLERKS--4 JUDGES--3 SHERIFFS MAINTAINING PARITY OF PARTIES
3.) How will the voting location be publicized to voters? How will the location be noted as a "Vote Center?" RADIO, LOCAL NEWSPAPER, SOCIAL MEDIA
4.) How will the voting location serve as a focal point to meet the needs of a diverse community? THESE PRECINCTS ALWAYS VOTE IN THIS BUILDING, BUT BY CONSOLIDATING THE PRECINCTS, THERE WILL BE LESS CONFUSION AS TO WHICH LINES THEY ACTUALLY NEED TO BE IN.



Commonwealth of Kentucky

Petition to Consolidate Precincts and Precinct Election Officers

County Name	
MEADE	
Election	Dates of Voting
PRIMARY 2023	ELECTION DAY
Person Completing this Form	
Name	SUSAN MASTERSON
Title	MEADE COUNTY CLERK
Phone	270-422-2152
About Voting Location	
<i>Example: Tulip Poplar High, 123 Main Street, County High School</i>	
Name	PAYNEVILLE ELEMENTARY SCHOOL
Address	520 RHODELIA RD. PAYNEVILLE, KY 40157
Type	SCHOOL
Voting Equipment to be Used	
Number	Type of equipment
3	E-POLL BOOKS
1	VERITY SCAN
1	VERITY TOUCH WRITER

Precincts in Voting Location	
Precinct name	Number of registered voters
F101	818
F102	630
F103	992

Narrative Plan <i>(please attach additional sheets if needed)</i>
<p>1.) Why is this consolidation of these precincts desirable?</p> <p><input checked="" type="checkbox"/> This is the same plan used in the last election</p> <p>VOTERS IN THESE PRECINCTS WILL BE GOING TO THEIR REGULAR POLLING LOCATION, BUT WILL NOT NEED TO DETERMINE WHICH LINE THEY SHOULD BE IN. THIS WILL ALLOW FOR FEWER POLL WORKERS AND EQUIPMENT TO BE USED.</p>
<p>2.) In what manner will Precinct Officers be assigned?</p> <p><input checked="" type="checkbox"/> This location will be fully staffed with election officials</p> <p>2--CLERKS--2 JUDGES--2 SHERIFFS MAINTAINING PARITY OF PARTIES</p>
<p>3.) How will the voting location be publicized to voters? How will the location be noted as a "Vote Center?"</p> <p>RADIO, LOCAL NEWSPAPER, SOCIAL MEDIA</p>
<p>4.) How will the voting location serve as a focal point to meet the needs of a diverse community?</p> <p>THESE PRECINCTS ALWAYS VOTE IN THIS BUILDING, BUT BY CONSOLIDATING THE PRECINCTS, THERE WILL BE LESS CONFUSION AS TO WHICH LINES THEY ACTUALLY NEED TO BE IN.</p>



Commonwealth of Kentucky

Petition to Consolidate Precincts and Precinct Election Officers

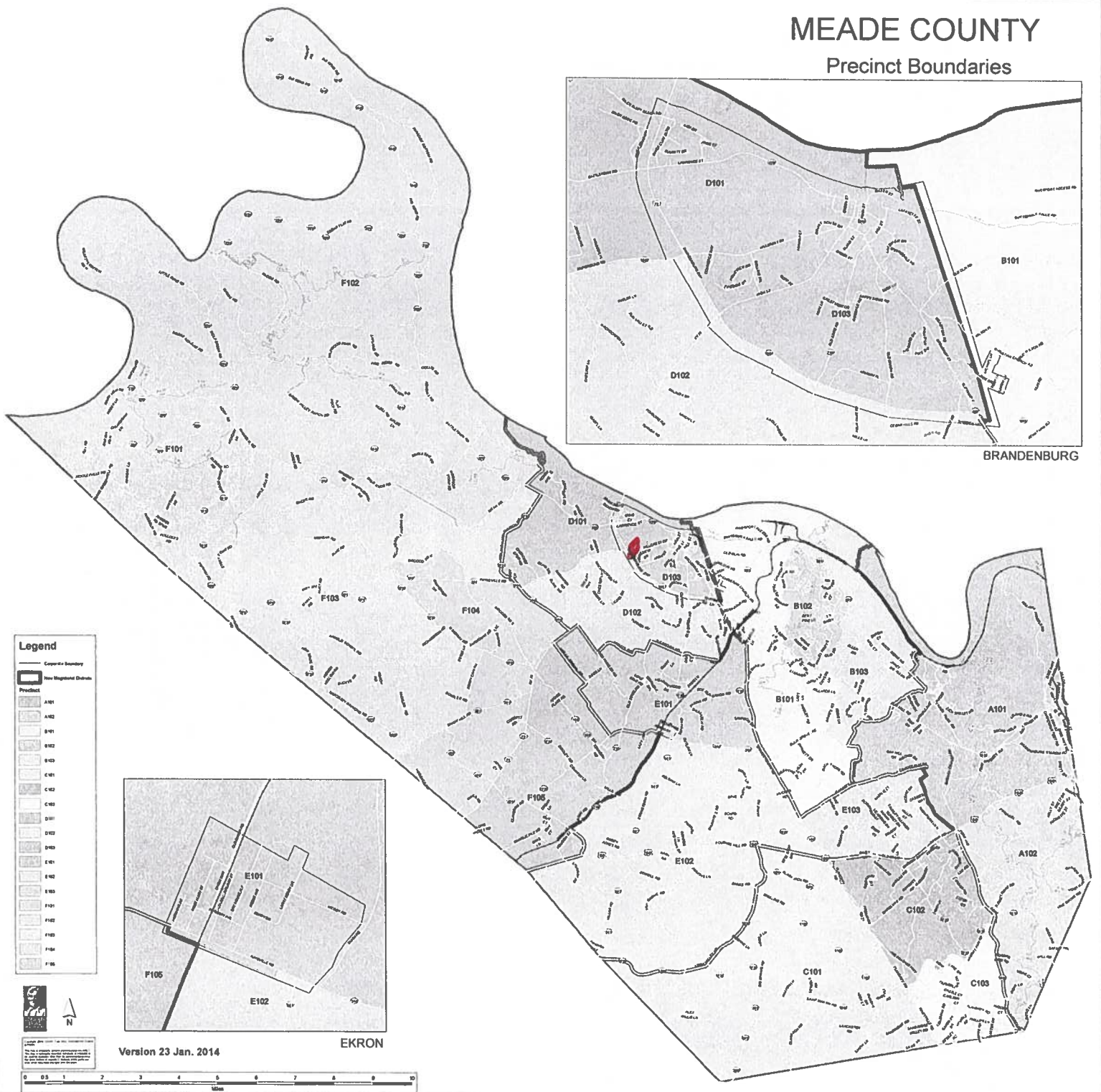
County Name	
MEADE	
Election	Dates of Voting
PRIMARY 2023	ELECTION DAY
Person Completing this Form	
Name	SUSAN MASTERSON
Title	MEADE COUNTY CLERK
Phone	270-422-2152
About Voting Location	
<i>Example: Tulip Poplar High, 123 Main Street, County High School</i>	
Name	STUART PEPPER MIDDLE SCHOOL
Address	1085 OLD EKRON RD BRANDENBURG, KY 40108
Type	SCHOOL
Voting Equipment to be Used	
Number	Type of equipment
4	E-POLL BOOKS
2	VERITY SCAN
1	VERITY TOUCH WRITER

Precincts in Voting Location	
Precinct name	Number of registered voters
B101	1692
B102	1965
B103	1025
D102	1240

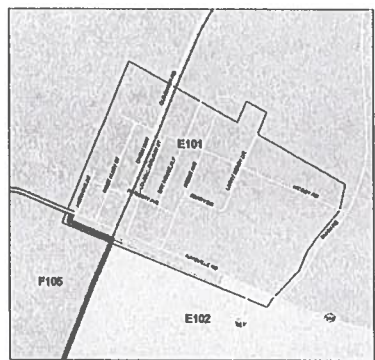
Narrative Plan <i>(please attach additional sheets if needed)</i>
1.) Why is this consolidation of these precincts desirable? <input type="checkbox"/> This is the same plan used in the last election VOTERS USE TO VOTE IN THIS LOCATION, BUILDING HAS BEEN UNDER RENOVATION FOR THE LAST FEW YEARS, SO WE ARE NOW ABLE TO MOVE THESE PRECINCTS BACK TO THEIR NORMAL VOTING LOCATION. CONSOLIDATING THE PRECINCTS TO ALLOW FOR LESS PRECINCT WORKERS AND EQUIPMENT TO BE USED.
2.) In what manner will Precinct Officers be assigned? <input type="checkbox"/> This location will be fully staffed with election officials 2--CLERKS--2 JUDGES--2 SHERIFFS MAINTAINING PARITY OF PARTIES
3.) How will the voting location be publicized to voters? How will the location be noted as a "Vote Center?" RADIO, LOCAL NEWSPAPER, SOCIAL MEDIA
4.) How will the voting location serve as a focal point to meet the needs of a diverse community? THESE PRECINCTS USE TO VOTE AT THIS LOCATION BEFORE BUILDING WENT UNDER RENOVATIONS. IT IS A CENTRALLY LOCATED BUILDING FOR THESE PRECINCTS AND IS ADA COMPLIANT

In person absentee voting

MEADE COUNTY Precinct Boundaries



- Legend**
- County Boundary
 - Precinct
 - New Mapland Districts
- A101
 - A102
 - B101
 - B102
 - B103
 - C101
 - C102
 - C103
 - D101
 - D102
 - D103
 - E101
 - E102
 - E103
 - F101
 - F102
 - F103
 - F104
 - F105



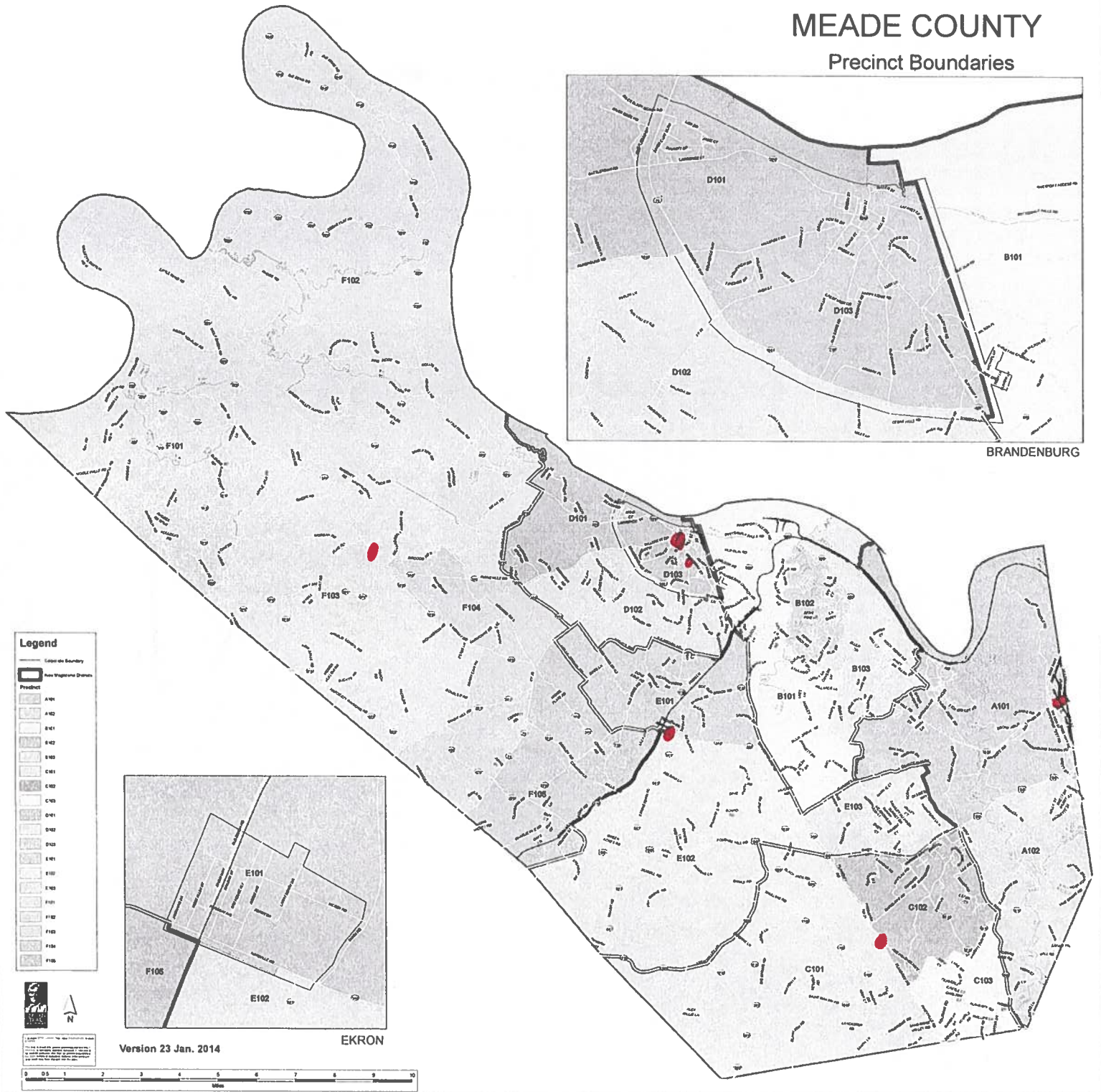
Version 23 Jan. 2014

EKRON

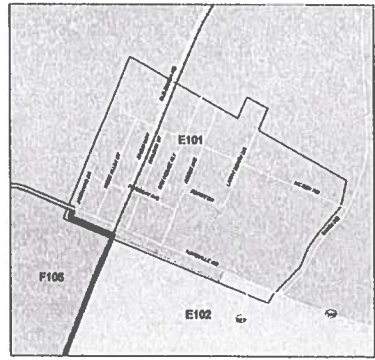


Election Day Voting

MEADE COUNTY Precinct Boundaries



- Legend**
- County Boundary
 - Inter-Tribal Boundary
 - Precinct
 - A101
 - A102
 - B101
 - B102
 - B103
 - C101
 - C102
 - C103
 - D101
 - D102
 - D103
 - E101
 - E102
 - F101
 - F102
 - F103
 - F104
 - F105



Version 23 Jan. 2014

