

# 2021 Trigg County Narrative Plan

**1.)** Why does allowing multiple precincts the ability to share equipment and election officers make sense for your county? It reduces the number of voting locations from 15 to 6. This cuts our cost in precinct officers greatly, saving the county approximately \$3,000.00. It will also allow us to order new Election equipment. We cannot afford to order new equipment for 15 precincts at this time.

**2.)** What is the plan for the assignment of pollworkers coming from different precincts? We plan to be fully staffed + add an additional clerk to keep the lines moving at the polls. Trigg County is a small community. There is no problem with pollworkers coming from different precincts. We used them from all over the county in the 2020 Election for early voting.

**3.)** How will you let voters know of this new voting location? We will put a notice in the newspaper; add it to our website, advertise on the radio. We will also put up signs at the locations that we will not be using to let voters know where they may vote.

How will the location be identified as a "Voting Center?" We will post a sign. All of our voting centers will be for ALL precincts.

**4.)** How does the location serve your community's needs? We anticipate that 50% of the voters will vote in the city. Most everyone has to come to town sometime for banking, grocery shopping, and the post office.

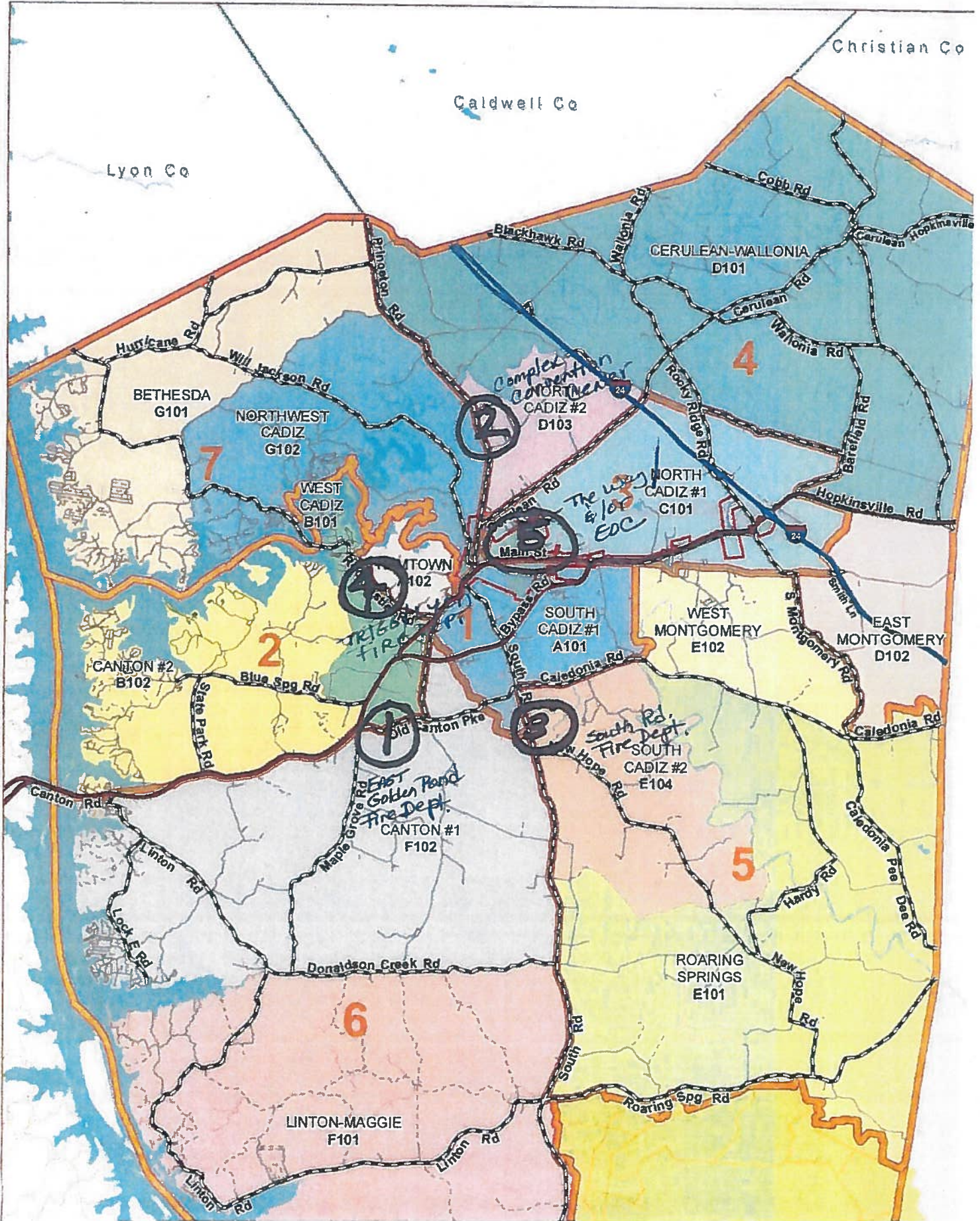
Does it provide multiple voting locations for rural residents of the county as well as urban residents of the county? Yes.

Does it establish County-wide Vote Centers in the most highly trafficked areas of your county? Yes. It will allow voting centers in the north, south, east, west of the county, and two in the city limits.

Does it allow for more people to pass through a voting location that affords more space to socially distance than was previously available? Etc... Yes.

Would grouping certain precincts result in a portion of your community that could be negatively impacted in a greater way than others? I don't believe so. If so, what is the plan to accommodate these areas? (e.g are there portions of the county that will have to drive twice as long to vote compared to other areas?)

# Trigg County Precincts





**TRIGG COUNTY CLERK**



**CARMEN FINLEY  
P.O. BOX 1310  
CADIZ, KY 42211  
PHONE: 270-522-6661  
FAX: 270-522-6662**

**Trigg County Election Plan 2022**

Absentee Voting—Mail-in absentee voting will be held in accordance with the legislation with approved excuses April 29-May 16, 2022. Medical emergency applications will be available May 3-May 17, 2022.

Early Voting—No excuse early voting will be held in accordance with the legislation on May 12-May 14, 2022 at the Emergency Operations Center and/or one other location in the city limits as Supercenters. Each day, ballots will be dropped off and picked up before the next voting day. Since all Trigg Countians come to town for banking, grocery, and other reasons, we feel that this will work best for our county. It worked very well for us in 2020.

Election Day In-Person Voting—we plan to have six voting supercenters open on Election Day. That will allow Trigg County citizens to vote wherever they like. I have attached a map showing the locations we have chosen:

1. North: Recreation Complex Convention Center
2. South: South Road Fire Department
3. East: East Golden Pond Fire Department
4. West: Trigg/Lyon Fire Department
5. City (Central): Trigg Emergency Operations Center
6. City (Central): The Way Youth Center

I had the Democrat and Republican Board members poll their committees regarding the reduction of voting places. They found that most people really liked the idea and it would save the county in the end.

Election Equipment—we are hoping to purchase new election equipment for the 2022 elections. Our equipment is 15 years old and last year's election was hard on our equipment due to the increased use. Our plan is to purchase the following:

1. One Verity Scan for Absentee voting

**TRIGG COUNTY CLERK**



**CARMEN FINLEY  
P.O. BOX 1310  
CADIZ, KY 42211  
PHONE: 270-522-6661  
FAX: 270-522-6662**

2. One Verity Duo and 2 Verity Scans for the early voting
3. Six Verity Scans and Six Verity Duos for Election Day
4. 2 backup machines

Trigg County Fiscal Court has budgeted \$75,000 for the purchase of election equipment. The total cost of the equipment is approximately \$114,000. If we go with this plan, we will fall short. We are hopeful for the state and federal government to provide at the very least \$50,000 for the purchase of equipment. We realize that it will be a reimbursement and not an advance. We are a small county and require the assistance.

This plan is a reduction in the number of voting locations from 15 to 6 on Election Day. Although we would like to purchase the election equipment now, our concern is that we have our plan approved before we purchase any equipment.

Please advise approval as soon as possible. If you have any questions or require further information, please advise me.



**Commonwealth of Kentucky - EARLY VOTING**  
**Petition to Consolidate Precincts and Precinct Election Officers**

<b>County Name</b>	
Trigg	
<b>Election</b>	
2022 Early Voting	
<b>Person Completing this Form</b>	
Name	Carmen Finley
Title	Trigg County Clerk
Phone	270-522-6661
<b>About Voting Location</b>	
<i>Example: Tulip Poplar High, 123 Main Street, County High School</i>	
Name	Emergency Operations Center
Address	39 Jefferson Street, Cadiz, KY
Type	County-wide voting center
<b>Voting Equipment to be Used</b>	
Number	Type of equipment
1	Verity Scan
1	Verity Scan Duo

<b>Precincts in Voting Location</b>	
Precinct name	Number of registered voters
All Precincts (15)	12,742

**Narrative Plan** (please attach additional sheets if needed)

1.) Why is this consolidation of these precincts desirable?  
 This is the same plan used in the last election

This location is in the city limits. It is the same location used for early voting in 2020.

2.) In what manner will Precinct Officers be assigned?  
 This location will be fully staffed with election officials

we plan to be fully staffed with 2 judges, 2 clerks, and 1 sheriff.

3.) How will the voting location be publicized to voters? How will the location be noted as a "Vote Center?"

We will put it on our website, on the radio, and in the local newspaper. We will also have signs up at the location.

4.) How will the voting location serve as a focal point to meet the needs of a diverse community?

This is the same location we used for early voting in 2020. In Trigg County, everyone has to come to town sometime for banking, grocery, etc.











# Commonwealth of Kentucky

## Petition to Consolidate Precincts and Precinct Election Officers

County Name	
Trigg	
Election	
2022 Primary Election	
Person Completing this Form	
Name	Carmen Finley
Title	Trigg County Clerk
Phone	270-522-6661
About Voting Location	
<i>Example: Tulip Poplar High, 123 Main Street, County High School</i>	
Name	The Way Youth Center
Address	197 Lafayette Street, Cadiz, KY 42211
Type	County wide voting Center
Voting Equipment to be Used	
Number	Type of equipment
1	Verity Scan
1	Verity Scan Duo
1	

Precincts in Voting Location	
Precinct name	Number of registered voters
All Precincts (15)	12,742

Narrative Plan <i>(please attach additional sheets if needed)</i>
<p><b>1.) Why is this consolidation of these precincts desirable?</b></p> <p><input type="checkbox"/> This is the same plan used in the last election</p> <p>This location in the in the city limits. We would like to have county-wide voting there; however, it will focus mainly on A101 South Cadiz, 1 and G102 Northwest Cadiz.</p>
<p><b>2.) In what manner will Precinct Officers be assigned?</b></p> <p><input checked="" type="checkbox"/> This location will be fully staffed with election officials</p> <p>We plan to have be fully staffed with 2 judges, 2 clerks, and 1 Sheriff.</p>
<p><b>3.) How will the voting location be publicized to voters? How will the location be noted as a "Vote Center?"</b></p> <p>I will make sure to put it on our website, on the radio, and in our local newspaper. We will also have signs up at the locations that will not be used, so everyone will know where to vote.</p>
<p><b>4.) How will the voting location serve as a focal point to meet the needs of a diverse community?</b></p> <p>We plan to have voting locations north, south, east, west, and one or two in the city limits. Each location will be available for county-wide voting centers, giving everyone a choice on where to vote.</p>





# Commonwealth of Kentucky

## Petition to Consolidate Precincts and Precinct Election Officers

County Name	
Trigg	
Election	
2022 Primary Election	
Person Completing this Form	
Name	Carmen Finley
Title	Trigg County Clerk
Phone	270-522-6661
About Voting Location	
<i>Example: Tulip Poplar High, 123 Main Street, County High School</i>	
Name	Compex Convention Center
Address	303 Complex Rd., Cadiz, KY 42211
Type	County wide voting Center
Voting Equipment to be Used	
Number	Type of equipment
1	Verity Scan
1	Verity Scan Duo
1	

Precincts in Voting Location	
Precinct name	Number of registered voters
All Precincts (15)	12,742

Narrative Plan <i>(please attach additional sheets if needed)</i>
<p><b>1.) Why is this consolidation of these precincts desirable?</b></p> <p><input type="checkbox"/> This is the same plan used in the last election</p> <p>This location in the Northern part of the county. We would like to have county-wide voting there; however, it will focus mainly on D103 North Cadiz 2, C101 North Cadiz 1, D101 Cerulean-Wallonia.</p>
<p><b>2.) In what manner will Precinct Officers be assigned?</b></p> <p><input checked="" type="checkbox"/> This location will be fully staffed with election officials</p> <p>We plan to have be fully staffed with 2 judges, 2 clerks, and 1 Sheriff.</p>
<p><b>3.) How will the voting location be publicized to voters? How will the location be noted as a "Vote Center?"</b></p> <p>I will make sure to put it on our website, on the radio, and in our local newspaper. We will also have signs up at the locations that will not be used, so everyone will know where to vote.</p>
<p><b>4.) How will the voting location serve as a focal point to meet the needs of a diverse community?</b></p> <p>We plan to have voting locations north, south, east, west, and one or two in the city limits. Each location will be available for county-wide voting centers, giving everyone a choice on where to vote.</p>