



**Commonwealth of Kentucky**  
**Petition to Consolidate Precincts and Precinct Election Officers**

<b>County Name</b>	
WHITLEY	
<b>Election</b>	
2022 PRIMARY AND GENERAL ELECTION	
<b>Person Completing this Form</b>	
Name	NANCY WILLIS AND CAROLYN WILLIS
Title	DEPUTY CLERK AND CLERK
Phone	606-549-6002
<b>About Voting Location</b> <i>Example: Tulip Poplar High, 123 Main Street, County High School</i>	
Name	Corbin City Hall
Address	707 S Main St Corbin, KY 40701
Type	County School
<b>Voting Equipment to be Used</b>	
<b>Number</b>	<b>Type of equipment</b>
2	E-Poll Books
2	E-Scans
1	E-Slate

<b>Precincts in Voting Location</b>	
Precinct name	Number of registered voters

<b>Narrative Plan</b> (please attach additional sheets if needed)
<b>1.) Why is this consolidation of these precincts desirable?</b> <input type="checkbox"/> This is the same plan used in the last election Please See Attachment. This location is also the location of the three day Absentee voting.
<b>2.) In what manner will Precinct Officers be assigned?</b> <input checked="" type="checkbox"/> This location will be fully staffed with election officials This location will be fully staffed with: two clerks, two Republican Judges, two Democratic Judges, and one Sheriff.
<b>3.) How will the voting location be publicized to voters? How will the location be noted as a "Vote Center?"</b> Voting Centers will be publicized extensively through newspaper articles, the local radio stations, and Social Media, such as Facebook.
<b>4.) How will the voting location serve as a focal point to meet the needs of a diverse community?</b> Deciding on Voting centers was not done lightly. All parts of the county were taken into consideration. With the help of the Sheriff, Sheriff's deputy and County Board of Elections we Decided on places with easy accessability and enough room for social distancing.



## Commonwealth of Kentucky

### Petition to Consolidate Precincts and Precinct Election Officers

<b>County Name</b>	
WHITLEY	
<b>Election</b>	
2022 PRIMARY AND GENERAL ELECTION	
<b>Person Completing this Form</b>	
Name	NANCY WILLIS AND CAROLYN WILLIS
Title	DEPUTY CLERK AND CLERK
Phone	606-549-6002
<b>About Voting Location</b>	
<i>Example: Tulip Poplar High, 123 Main Street, County High School</i>	
Name	Whitley East Elementary School
Address	13781 Hwy 92 E Williamsburg, KY 40769
Type	County School
<b>Voting Equipment to be Used</b>	
<b>Number</b>	<b>Type of equipment</b>
2	E-Poll Books
2	E-Scans
1	E-Slate

Precincts in Voting Location	
Precinct name	Number of registered voters

<b>Narrative Plan</b> <i>(please attach additional sheets if needed)</i>
<p><b>1.) Why is this consolidation of these precincts desirable?</b></p> <p><input type="checkbox"/> This is the same plan used in the last election</p> <p>Please See Attachment.</p>
<p><b>2.) In what manner will Precinct Officers be assigned?</b></p> <p><input checked="" type="checkbox"/> This location will be fully staffed with election officials</p> <p>This location will be fully staffed with: two clerks, two Republican Judges, two Democratic Judges, and one Sheriff.</p>
<p><b>3.) How will the voting location be publicized to voters? How will the location be noted as a "Vote Center?"</b></p> <p>Voting Centers will be publicized extensively through newspaper articles, the local radio stations, and Social Media, such as Facebook.</p>
<p><b>4.) How will the voting location serve as a focal point to meet the needs of a diverse community?</b></p> <p>Deciding on Voting centers was not done lightly. All parts of the county where taken into consideration. With the help of the Sheriff, Sheriff's deputy and County Board of Elections we Decided on places with easy accesibility and enough room for social distancing.</p>



# Commonwealth of Kentucky

## Petition to Consolidate Precincts and Precinct Election Officers

County Name	
WHITLEY	
Election	
2022 PRIMARY AND GENERAL ELECTION	
Person Completing this Form	
Name	NANCY WILLIS AND CAROLYN WILLIS
Title	DEPUTY CLERK AND CLERK
Phone	606-549-6002
About Voting Location	
<i>Example: Tulip Poplar High, 123 Main Street, County High School</i>	
Name	Whitley North Elementary School
Address	6670 Hwy 26 Rockholds, KY 40759
Type	County School
Voting Equipment to be Used	
Number	Type of equipment
2	E-Poll Books
2	E-Scans
1	E-Slate

Precincts in Voting Location	
Precinct name	Number of registered voters

Narrative Plan <i>(please attach additional sheets if needed)</i>	
<b>1.) Why is this consolidation of these precincts desirable?</b> <input type="checkbox"/> This is the same plan used in the last election Please See Attachment.	
<b>2.) In what manner will Precinct Officers be assigned?</b> <input checked="" type="checkbox"/> This location will be fully staffed with election officials This location will be fully staffed with: two clerks, two Republican Judges, two Democratic Judges, and one Sheriff.	
<b>3.) How will the voting location be publicized to voters? How will the location be noted as a "Vote Center?"</b> Voting Centers will be publicized extensively through newspaper articles, the local radio stations, and Social Media, such as Facebook.	
<b>4.) How will the voting location serve as a focal point to meet the needs of a diverse community?</b> Deciding on Voting centers was not done lightly. All parts of the county were taken into consideration. With the help of the Sheriff, Sheriff's deputy and County Board of Elections we Decided on places with easy accessibility and enough room for social distancing.	



**Commonwealth of Kentucky**  
**Petition to Consolidate Precincts and Precinct Election Officers**

<b>County Name</b>	
WHITLEY	
<b>Election</b>	
2022 PRIMARY AND GENERAL ELECTION	
<b>Person Completing this Form</b>	
Name	NANCY WILLIS AND CAROLYN WILLIS
Title	DEPUTY CLERK AND CLERK
Phone	606-549-6002
<b>About Voting Location</b>	
<i>Example: Tulip Poplar High, 123 Main Street, County High School</i>	
Name	Whitley County High School
Address	350 Blvd. of Champions Rd. Williamsburg, KY 40769
Type	County School
<b>Voting Equipment to be Used</b>	
<b>Number</b>	<b>Type of equipment</b>
2	E-Poll Books
2	E-Scans
1	E-Slate

<b>Precincts in Voting Location</b>	
Precinct name	Number of registered voters

<b>Narrative Plan</b> <i>(please attach additional sheets if needed)</i>
<b>1.) Why is this consolidation of these precincts desirable?</b> <input type="checkbox"/> This is the same plan used in the last election Please See Attachment.
<b>2.) In what manner will Precinct Officers be assigned?</b> <input checked="" type="checkbox"/> This location will be fully staffed with election officials This location will be fully staffed with: two clerks, two Republican Judges, two Democratic Judges, and one Sheriff.
<b>3.) How will the voting location be publicized to voters? How will the location be noted as a "Vote Center?"</b> Voting Centers will be publicized extensively through newspaper articles, the local radio stations, and Social Media, such as Facebook.
<b>4.) How will the voting location serve as a focal point to meet the needs of a diverse community?</b> Deciding on Voting centers was not done lightly. All parts of the county were taken into consideration. With the help of the Sheriff, Sheriff's deputy and County Board of Elections we Decided on places with easy accessibility and enough room for social distancing.



## Commonwealth of Kentucky

### Petition to Consolidate Precincts and Precinct Election Officers

<b>County Name</b>	
WHITLEY	
<b>Election</b>	
2022 PRIMARY AND GENERAL ELECTION	
<b>Person Completing this Form</b>	
Name	NANCY WILLIS AND CAROLYN WILLIS
Title	DEPUTY CLERK AND CLERK
Phone	606-549-6002
<b>About Voting Location</b>	
<i>Example: Tulip Poplar High, 123 Main Street, County High School</i>	
Name	WILLIAMSBURG CITY SCHOOL
Address	1000 MAIN ST. WILLIAMSBURG, KY 40769
Type	SCHOOL
<b>Voting Equipment to be Used</b>	
<b>Number</b>	<b>Type of equipment</b>
2	E-Poll Books
2	E-Scans
1	E-Slate

Precincts in Voting Location	
Precinct name	Number of registered voters

<b>Narrative Plan</b> <i>(please attach additional sheets if needed)</i>	
<p><b>1.) Why is this consolidation of these precincts desirable?</b>  <input type="checkbox"/> This is the same plan used in the last election</p> <p>Please See Attachment.</p>	
<p><b>2.) In what manner will Precinct Officers be assigned?</b>  <input checked="" type="checkbox"/> This location will be fully staffed with election officials</p> <p>This location will be fully staffed with: two clerks, two Republican Judges, two Democratic Judges, and one Sheriff.</p>	
<p><b>3.) How will the voting location be publicized to voters? How will the location be noted as a "Vote Center?"</b></p> <p>Voting Centers will be publicized extensively through newspaper articles, the local radio stations, and Social Media, such as Facebook.</p>	
<p><b>4.) How will the voting location serve as a focal point to meet the needs of a diverse community?</b></p> <p>Deciding on Voting centers was not done lightly. All parts of the county were taken into consideration. With the help of the Sheriff, Sheriff's deputy and County Board of Elections we Decided on places with easy accesibility and enough room for social distancing.</p>	



# Commonwealth of Kentucky

## Petition to Consolidate Precincts and Precinct Election Officers

County Name	
WHITLEY	
Election	
2022 PRIMARY AND GENERAL ELECTION	
Person Completing this Form	
Name	NANCY WILLIS AND CAROLYN WILLIS
Title	DEPUTY CLERK AND CLERK
Phone	606-549-6002
About Voting Location	
<i>Example: Tulip Poplar High, 123 Main Street, County High School</i>	
Name	Oak Grove Elementary School
Address	4505 Cumberland Falls Hwy, Corbin 40701
Type	County School
Voting Equipment to be Used	
Number	Type of equipment
2	E-Poll Books
2	E-Scans
1	E-Slate

Precincts in Voting Location	
Precinct name	Number of registered voters

Narrative Plan <i>(please attach additional sheets if needed)</i>
<b>1.) Why is this consolidation of these precincts desirable?</b> <input type="checkbox"/> This is the same plan used in the last election  Please See Attachment.
<b>2.) In what manner will Precinct Officers be assigned?</b> <input checked="" type="checkbox"/> This location will be fully staffed with election officials  This location will be fully staffed with: two clerks, two Republican Judges, two Democratic Judges, and one Sheriff.
<b>3.) How will the voting location be publicized to voters? How will the location be noted as a "Vote Center?"</b>  Voting Centers will be publicized extensively through newspaper articles, the local radio stations, and Social Media, such as Facebook.
<b>4.) How will the voting location serve as a focal point to meet the needs of a diverse community?</b>  Deciding on Voting centers was not done lightly. All parts of the county were taken into consideration. With the help of the Sheriff, Sheriff's deputy and County Board of Elections we Decided on places with easy accesibility and enough room for social distancing.



# Commonwealth of Kentucky

## Petition to Consolidate Precincts and Precinct Election Officers

<b>County Name</b>	
WHITLEY	
<b>Election</b>	
2022 PRIMARY AND GENERAL ELECTION	
<b>Person Completing this Form</b>	
Name	NANCY WILLIS AND CAROLYN WILLIS
Title	DEPUTY CLERK AND CLERK
Phone	606-549-6002
<b>About Voting Location</b>	
<i>Example: Tulip Poplar High, 123 Main Street, County High School</i>	
Name	Pleasant View Elementary School
Address	5554 Hwy 25-W S Williamsburg, KY 40769
Type	County School
<b>Voting Equipment to be Used</b>	
<b>Number</b>	<b>Type of equipment</b>
2	E-Poll Books
2	E-Scans
1	E-Slate

Precincts in Voting Location	
Precinct name	Number of registered voters

**Narrative Plan** *(please attach additional sheets if needed)*

**1.) Why is this consolidation of these precincts desirable?**  
 This is the same plan used in the last election  
 Please See Attachment.

**2.) In what manner will Precinct Officers be assigned?**  
 This location will be fully staffed with election officials  
 This location will be fully staffed with: two clerks, two Republican Judges, two Democratic Judges, and one Sheriff.

**3.) How will the voting location be publicized to voters? How will the location be noted as a "Vote Center?"**  
 Voting Centers will be publicized extensively through newspaper articles, the local radio stations, and Social Media, such as Facebook.

**4.) How will the voting location serve as a focal point to meet the needs of a diverse community?**  
 Deciding on Voting centers was not done lightly. All parts of the county were taken into consideration. With the help of the Sheriff, Sheriff's deputy and County Board of Elections we Decided on places with easy accesibility and enough room for social distancing.



# Commonwealth of Kentucky

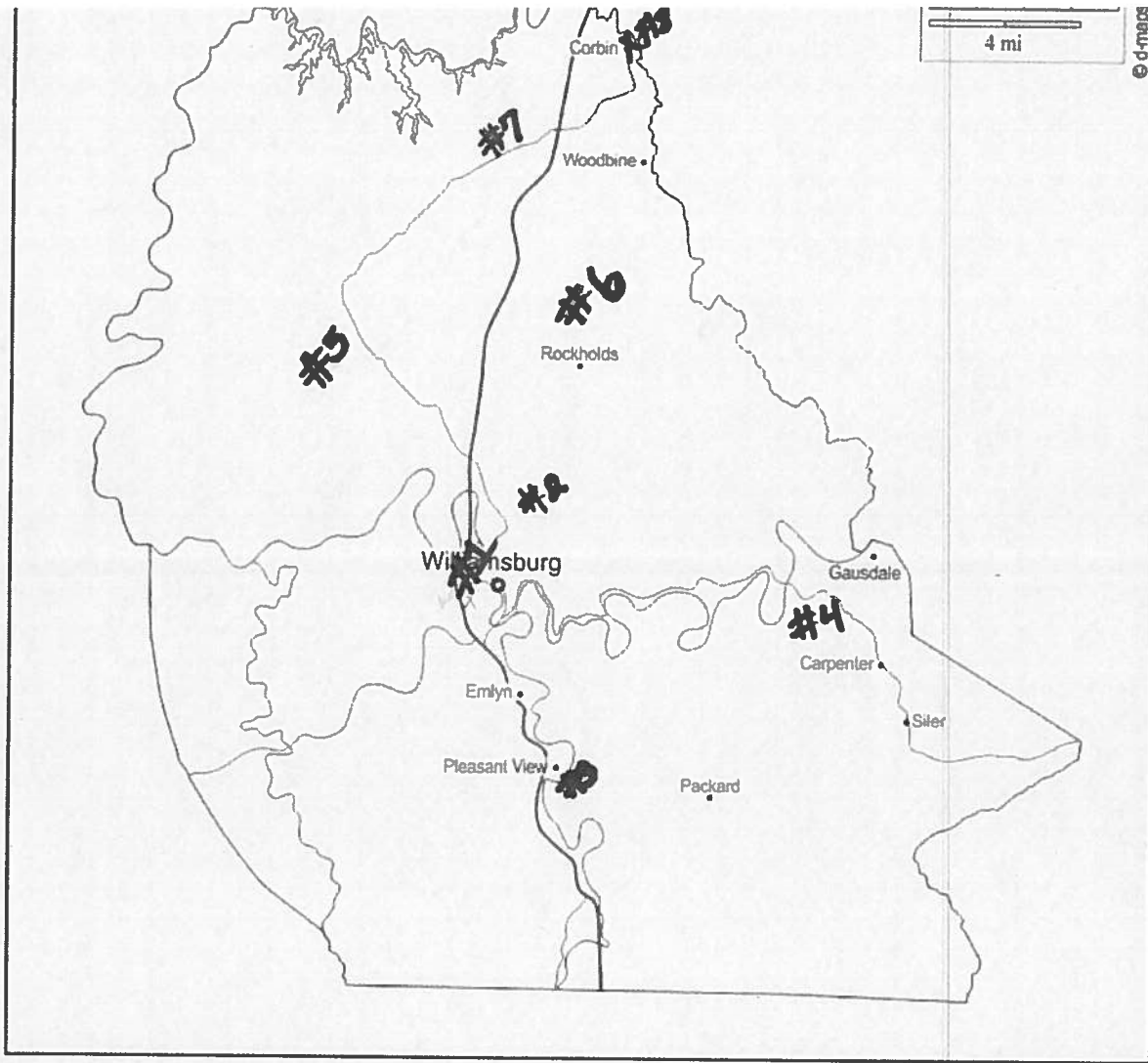
## Petition to Consolidate Precincts and Precinct Election Officers

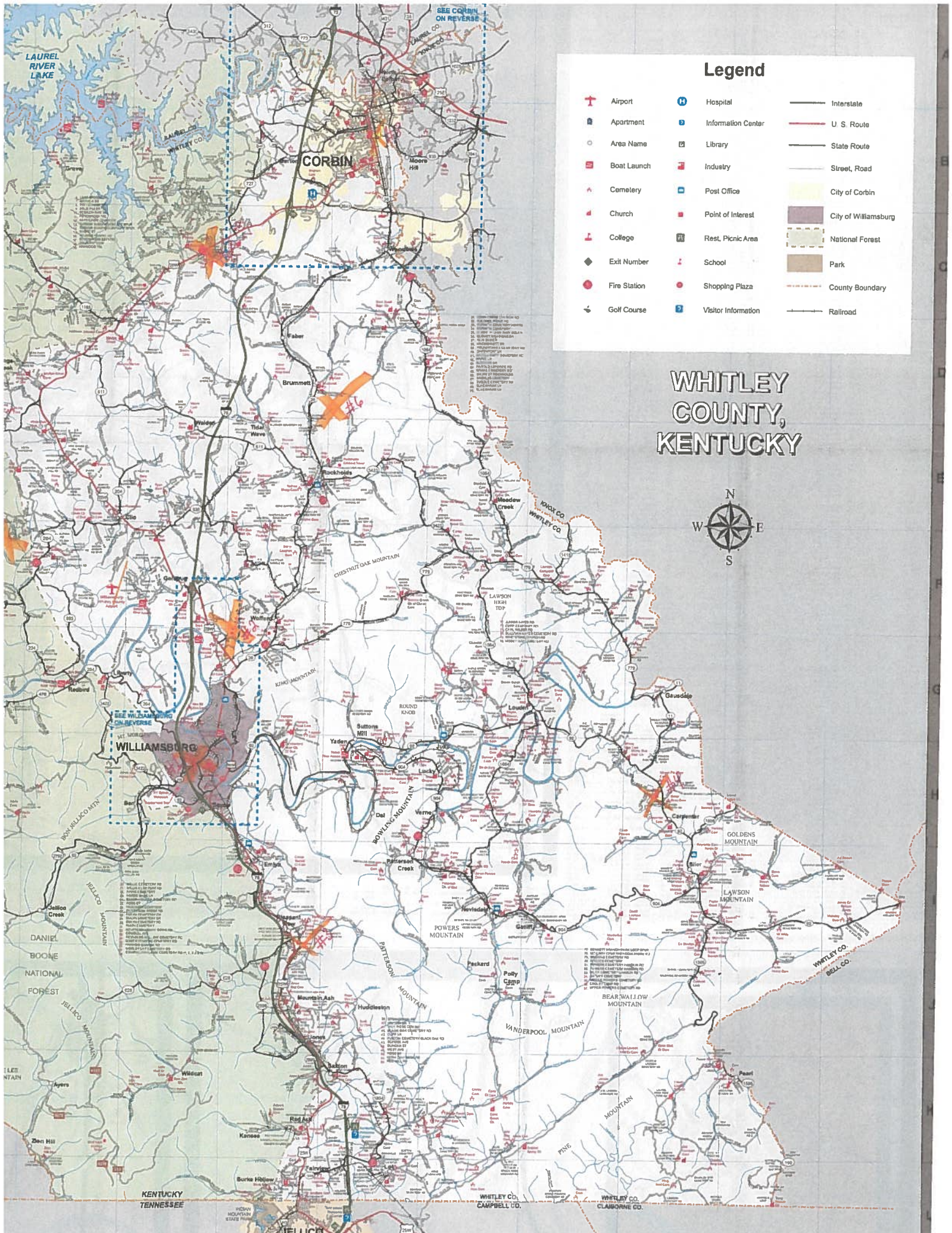
County Name	
WHITLEY	
Election	
2022 PRIMARY AND GENERAL ELECTION	
Person Completing this Form	
Name	NANCY WILLIS AND CAROLYN WILLIS
Title	DEPUTY CLERK AND CLERK
Phone	606-549-6002
About Voting Location	
<i>Example: Tulip Poplar High, 123 Main Street, County High School</i>	
Name	Sanders Creek Church of God
Address	460 Letha Petrey Rd. Williamsburg, KY 40769
Type	Local Church
Voting Equipment to be Used	
Number	Type of equipment
2	E-Poll Books
2	E-Scans
1	E-Slate

Precincts in Voting Location	
Precinct name	Number of registered voters

<p><b>Narrative Plan</b> (please attach additional sheets if needed)</p> <p>1.) Why is this consolidation of these precincts desirable?</p> <p><input type="checkbox"/> This is the same plan used in the last election</p> <p>Please See Attachment.</p>
<p>2.) In what manner will Precinct Officers be assigned?</p> <p><input checked="" type="checkbox"/> This location will be fully staffed with election officials</p> <p>This location will be fully staffed with: two clerks, two Republican Judges, two Democratic Judges, and one Sheriff.</p>
<p>3.) How will the voting location be publicized to voters? How will the location be noted as a "Vote Center?"</p> <p>Voting Centers will be publicized extensively through newspaper articles, the local radio stations, and Social Media, such as Facebook.</p>
<p>4.) How will the voting location serve as a focal point to meet the needs of a diverse community?</p> <p>Deciding on Voting centers was not done lightly. All parts of the county were taken into consideration. With the help of the Sheriff, Sheriff's deputy and County Board of Elections we Decided on places with easy accesibility and enough room for social distancing.</p>







### Legend

- |              |                     |                      |
|--------------|---------------------|----------------------|
| Airport      | Hospital            | Interstate           |
| Apartment    | Information Center  | U.S. Route           |
| Area Name    | Library             | State Route          |
| Boat Launch  | Post Office         | Street, Road         |
| Cemetery     | Point of Interest   | City of Corbin       |
| Church       | Rest, Picnic Area   | City of Williamsburg |
| College      | School              | National Forest      |
| Exit Number  | Shopping Plaza      | Park                 |
| Fire Station | Visitor Information | County Boundary      |
| Golf Course  |                     | Railroad             |

# WHITLEY COUNTY, KENTUCKY



SEE WILLIAMSBURG ON REVERSE

SEE CORBIN ON REVERSE

KENTUCKY TENNESSEE

WHITLEY CO. CAMPBELL CO.

WHITLEY CO. CLAYBURN CO.

## Narrative Plan

We plan on having 8 Voting Center's placed throughout the county that will be available to all voters with reasonable mileage. We have worked with the Sheriff and sheriff's deputy making sure that driving distances were anywhere from 8 to 10 miles so no one is driving a long distance.

Registered voters in the Pine Mountain Precinct will be the only individuals who will need to travel further than 8 to 10 miles. However, this precinct has voted at Whitley East Elementary School for numerous years and are accustomed to driving the further distance to vote. Whitley East Elementary is one of the 8 voting centers.

Corbin City Hall voting center is the same location as the three day early Voting.

Being able to have Voting Centers is going to make voting more accessible to all voters. Those that leave for work before the polls open in the morning will now be able to go to their local Voting Center and vote instead of having to take off half a day of work to go vote.

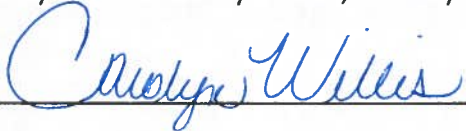
This plan also allows our county to have fewer precinct workers, which will save money for our county. It will also make it easier for us to find workers. With Covid numbers soaring some of the workers no longer want to work in such large crowds.

- 1.) Williamsburg City School, 1000 Main St. Williamsburg KY, 40769
- 2.) Whitley County High School, 350 Blvd of Champions Rd. Williamsburg, KY 40769
- 3.) Pleasant View School, 5554 Hwy 25-W S Williamsburg, KY 40769
- 4.) Whitley East School, 13781 Hwy 92 E Williamsburg, KY 40769
- 5.) Sanders Creek Church of God, 460 Letha Petrey Rd. Williamsburg, KY 40769
- 6.) Whitley North Elementary School, 6670 Hwy 26 Rockholds, KY 40769
- 7.) Oak Grove School, 4505 Cumberland Falls Hwy, Corbin KY 40701
- 8.) Corbin City Hall, 707 S Main St, Corbin, KY 40701

The map we have sent is marked with an orange highlighter with a red number beside it.

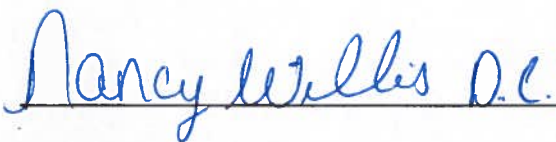
The legend on the map is how we determined the amount of mileage to the County Wide Voting Centers and is circled in red.

Our SBE-74 forms will be emailed. If you have any questions please contact Nancy Willis, Deputy Clerk or Carolyn Willis, Whitley County Clerk.



---

Carolyn Willis, Whitley County Clerk



---

Nancy Willis, Deputy Clerk

