



Commonwealth of Kentucky

County Election Planning Report

County Name	
ANDERSON	
Election	
MAY 21, 2024	
Person Completing this Form	
Name	JASON DENNY
Title	COUNTY CLERK
Phone	502-839-3041

For in-person voting on Election Day, the County Board of Elections will (check one):

- Consolidate precincts and precinct election officers (Requires Form SBE 74);
- Utilize the same consolidation plan that was used in a previous election (Requires previous Form SBE 74); or
- Open all existing precincts.

Excused in-person absentee voting will occur (check one):

- Within the County Clerk's office; or
- In another location within the county (Requires Form SBE 74).

No-excuse in-person absentee voting will occur (check one):

- Within the County Clerk's office; or
- In another location within the county (Requires Form SBE 74).

Absentee ballot drop-boxes will be located (minimum of one location required):

ANDERSON COUNTY CLERK'S OFFICE/DRIVE-THRU 100 SOUTH MAIN STREET

I have attached:

- All required Form SBE 74 sheets
- Relevant Maps
- Supplemental Narrative


Signature _____ Date 1-29-24



JASON DENNY
ANDERSON COUNTY CLERK
100 SOUTH MAIN STREET
LAWRENCEBURG, KY 40342
PHONE: 502-839-3041 FAX: 502-839-3043

January 29, 2024

Karen Sellers
Richard House
Taylor Brown
State Board of Elections
100 Walnut Street
Frankfort, KY 40601

I am including this letter with the Vote Center Plan for Anderson County. We thank you for your past support of Vote Centers as they have been very popular in our county. We have found that the voters love Vote Centers as well as early voting. They comment on the flexibility and ease as well as the increased security measures. Easy to vote and hard to cheat. In the past 8 out of 9 elections, we have ranked 1st, 2nd, 2nd, 4th, 5th, 5th again, 7th, and 9th. We are asking to utilize the four (4) Vote Centers for the May Primary Election as we have in the past. Even though statistical data showed we didn't need to, our Board chose to open an additional location last November, in preparation for the 2024 Election Cycle. During the November 2023 General 39.7% of our voters voted early, 2.1 % absentee leaving 58.1% on Election Day. We can vote between 750-1,000 voters per hour. Our plans have worked well since 2020 and our board, my staff and I all agree that this plan will be more than sufficient for the future.

As always, feel free to contact me with any questions or comments at 502-839-3041 or my cell at 502-680-0878.

Sincerely,

A handwritten signature in black ink, appearing to read "Jason Denny", with a long horizontal flourish extending to the right.

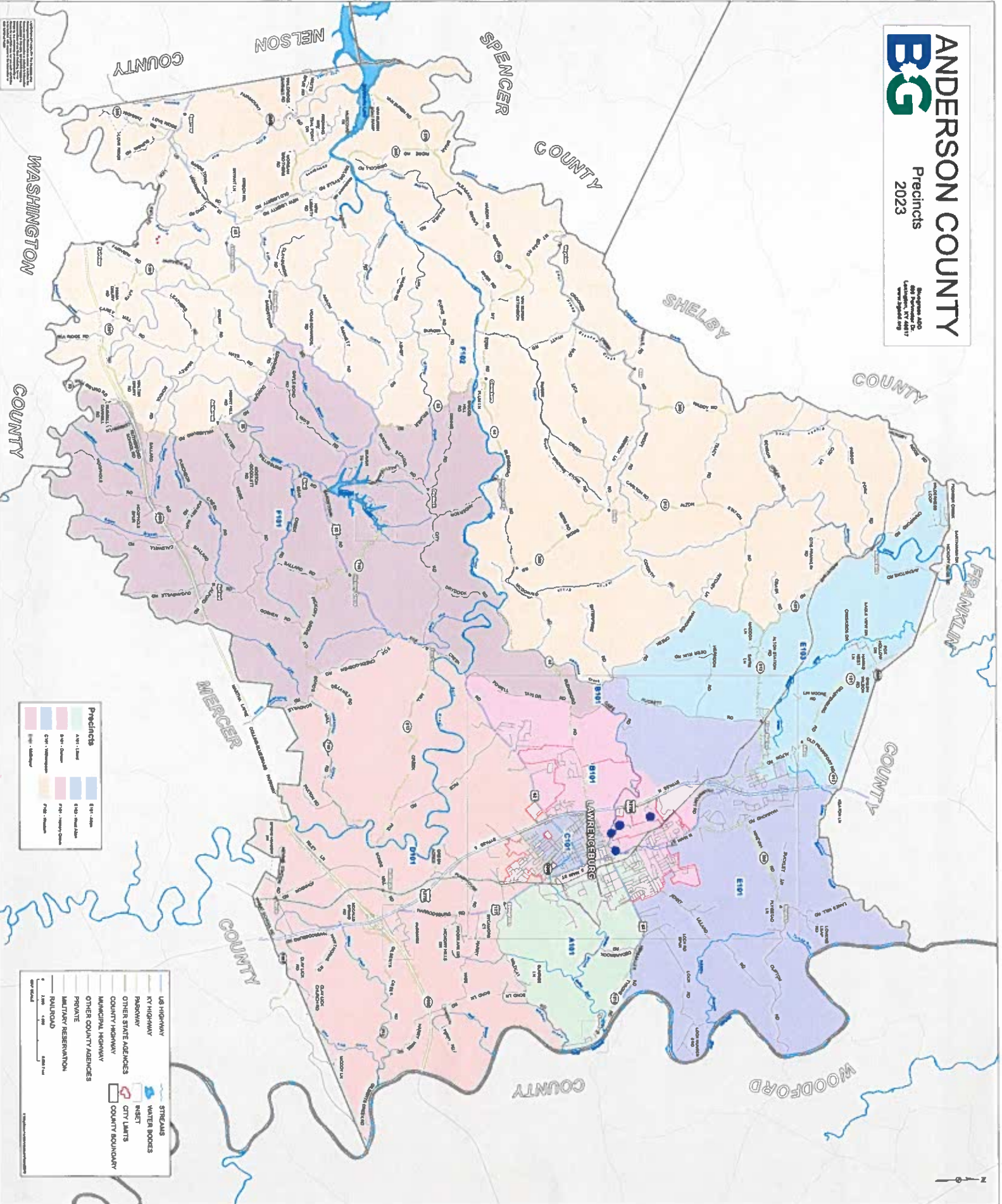
Jason Denny

ANDERSON COUNTY

Precincts 2023

Precincts
2023

August 2023
Map Updated 10/2023
www.andersonga.gov



Precincts

1001 - 1005	1006 - 1010	1011 - 1015	1016 - 1020
1021 - 1025	1026 - 1030	1031 - 1035	1036 - 1040
1041 - 1045	1046 - 1050	1051 - 1055	1056 - 1060
1061 - 1065	1066 - 1070	1071 - 1075	1076 - 1080
1081 - 1085	1086 - 1090	1091 - 1095	1096 - 1100
1101 - 1105	1106 - 1110	1111 - 1115	1116 - 1120
1121 - 1125	1126 - 1130	1131 - 1135	1136 - 1140
1141 - 1145	1146 - 1150	1151 - 1155	1156 - 1160
1161 - 1165	1166 - 1170	1171 - 1175	1176 - 1180
1181 - 1185	1186 - 1190	1191 - 1195	1196 - 1200
1201 - 1205	1206 - 1210	1211 - 1215	1216 - 1220
1221 - 1225	1226 - 1230	1231 - 1235	1236 - 1240
1241 - 1245	1246 - 1250	1251 - 1255	1256 - 1260
1261 - 1265	1266 - 1270	1271 - 1275	1276 - 1280
1281 - 1285	1286 - 1290	1291 - 1295	1296 - 1300
1301 - 1305	1306 - 1310	1311 - 1315	1316 - 1320
1321 - 1325	1326 - 1330	1331 - 1335	1336 - 1340
1341 - 1345	1346 - 1350	1351 - 1355	1356 - 1360
1361 - 1365	1366 - 1370	1371 - 1375	1376 - 1380
1381 - 1385	1386 - 1390	1391 - 1395	1396 - 1400
1401 - 1405	1406 - 1410	1411 - 1415	1416 - 1420
1421 - 1425	1426 - 1430	1431 - 1435	1436 - 1440
1441 - 1445	1446 - 1450	1451 - 1455	1456 - 1460
1461 - 1465	1466 - 1470	1471 - 1475	1476 - 1480
1481 - 1485	1486 - 1490	1491 - 1495	1496 - 1500
1501 - 1505	1506 - 1510	1511 - 1515	1516 - 1520
1521 - 1525	1526 - 1530	1531 - 1535	1536 - 1540
1541 - 1545	1546 - 1550	1551 - 1555	1556 - 1560
1561 - 1565	1566 - 1570	1571 - 1575	1576 - 1580
1581 - 1585	1586 - 1590	1591 - 1595	1596 - 1600
1601 - 1605	1606 - 1610	1611 - 1615	1616 - 1620
1621 - 1625	1626 - 1630	1631 - 1635	1636 - 1640
1641 - 1645	1646 - 1650	1651 - 1655	1656 - 1660
1661 - 1665	1666 - 1670	1671 - 1675	1676 - 1680
1681 - 1685	1686 - 1690	1691 - 1695	1696 - 1700
1701 - 1705	1706 - 1710	1711 - 1715	1716 - 1720
1721 - 1725	1726 - 1730	1731 - 1735	1736 - 1740
1741 - 1745	1746 - 1750	1751 - 1755	1756 - 1760
1761 - 1765	1766 - 1770	1771 - 1775	1776 - 1780
1781 - 1785	1786 - 1790	1791 - 1795	1796 - 1800
1801 - 1805	1806 - 1810	1811 - 1815	1816 - 1820
1821 - 1825	1826 - 1830	1831 - 1835	1836 - 1840
1841 - 1845	1846 - 1850	1851 - 1855	1856 - 1860
1861 - 1865	1866 - 1870	1871 - 1875	1876 - 1880
1881 - 1885	1886 - 1890	1891 - 1895	1896 - 1900
1901 - 1905	1906 - 1910	1911 - 1915	1916 - 1920
1921 - 1925	1926 - 1930	1931 - 1935	1936 - 1940
1941 - 1945	1946 - 1950	1951 - 1955	1956 - 1960
1961 - 1965	1966 - 1970	1971 - 1975	1976 - 1980
1981 - 1985	1986 - 1990	1991 - 1995	1996 - 2000

Legend

US HIGHWAY	STREAMS
GA HIGHWAY	WATER BODIES
RAILROAD	INLET
PRIVATE	CITY LIMITS
MUNICIPAL RESERVATION	COUNTY BOUNDARY
OTHER COUNTY AGENCIES	

